

FOR SALE OR LEASE
40,000 SF
Office / Warehouse



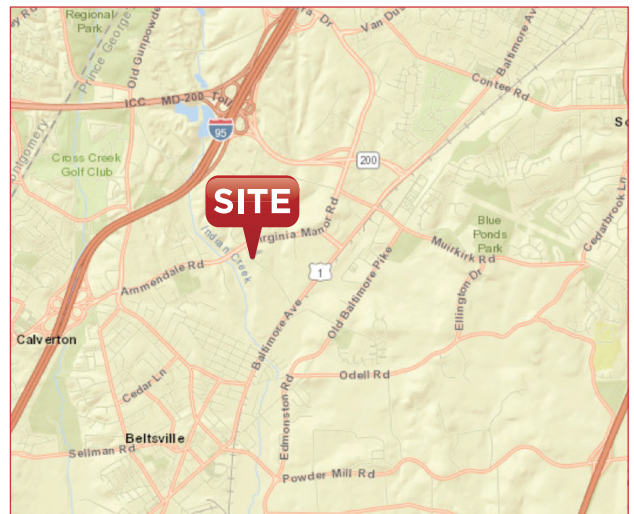
**FOR SALE
OR LEASE**

5851 Ammendale Road

Beltsville, Maryland 20705

Property Features

- For Lease: 40,000 SF available
- Beautiful upgraded office and warehouse space
- Flexible space for a variety of uses
- Six (6) dock loading doors and additional punch outs
- Abundant parking
- Minutes from I-95 (Exit 29) and I-495
- Easy access to the Intercounty Connector (ICC)
- Heated and air conditioned corporate office and showroom
- 18' ceilings
- 3.62 acres
- Zoning EIA



FOR DETAILS CONTACT

Chris Kubler, CCIM
+1 443 574 1415
ckubler@klnb.com

Alan Coppola, SIOR
+1 443 574 1404
acoppola@klnb.com



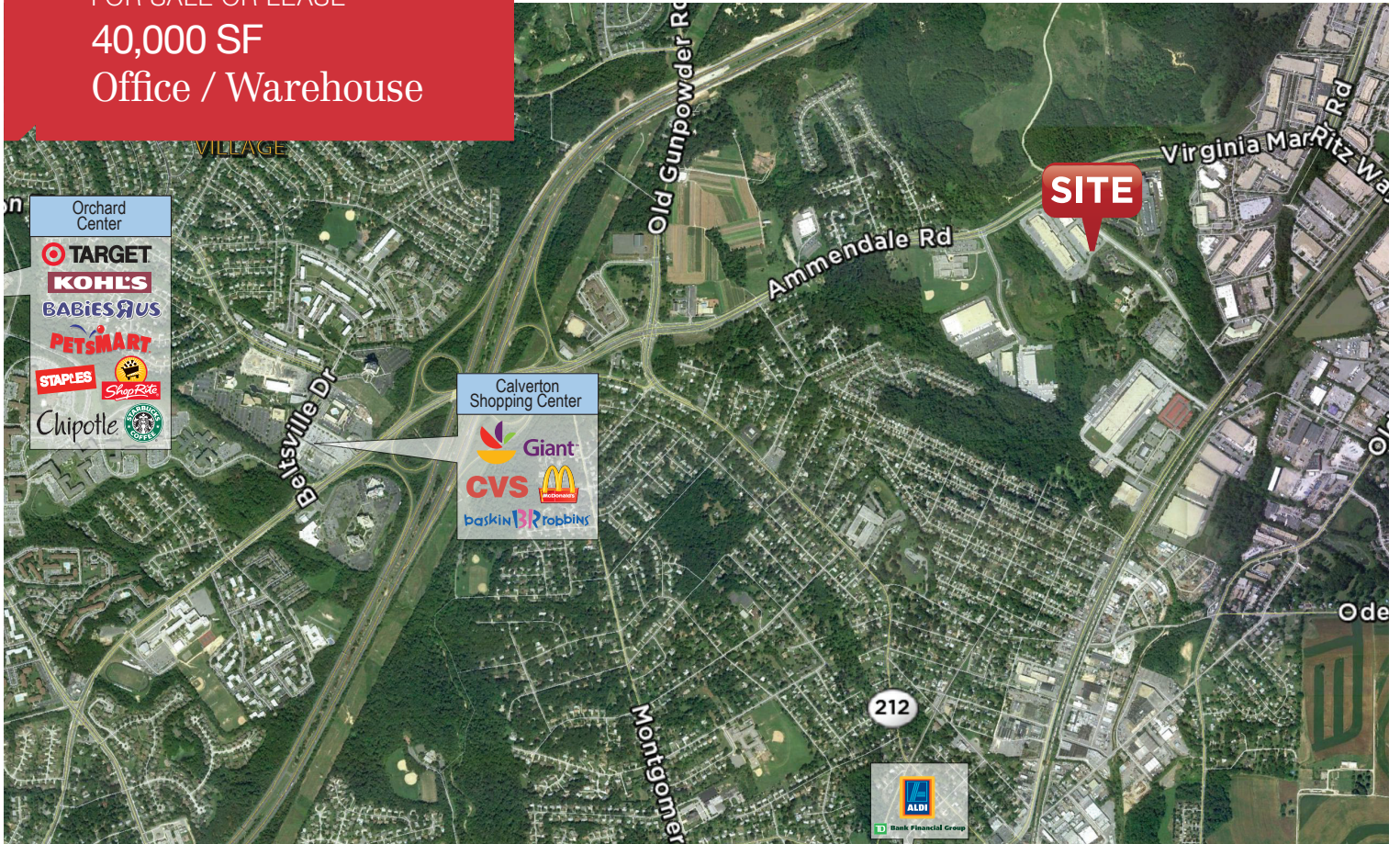
WHILE WE HAVE NO REASON TO DOUBT THE ACCURACY OF ANY OF THE INFORMATION SUPPLIED, WE CANNOT, AND DO NOT, GUARANTEE ITS ACCURACY. ALL INFORMATION SHOULD BE INDEPENDENTLY VERIFIED PRIOR TO A PURCHASE OR LEASE OF THE PROPERTY. WE ARE NOT RESPONSIBLE FOR ERRORS, OMISSIONS, MISUSE, OR MISINTERPRETATION OF INFORMATION CONTAINED HEREIN & MAKE NO WARRANTY OF ANY KIND, EXPRESS OR IMPLIED, WITH RESPECT TO THE PROPERTY OR ANY OTHER MATTERS.

6011 University Boulevard
Suite 350
Ellicott City, MD 21043
+1 410 290 1110
naiklnb.com

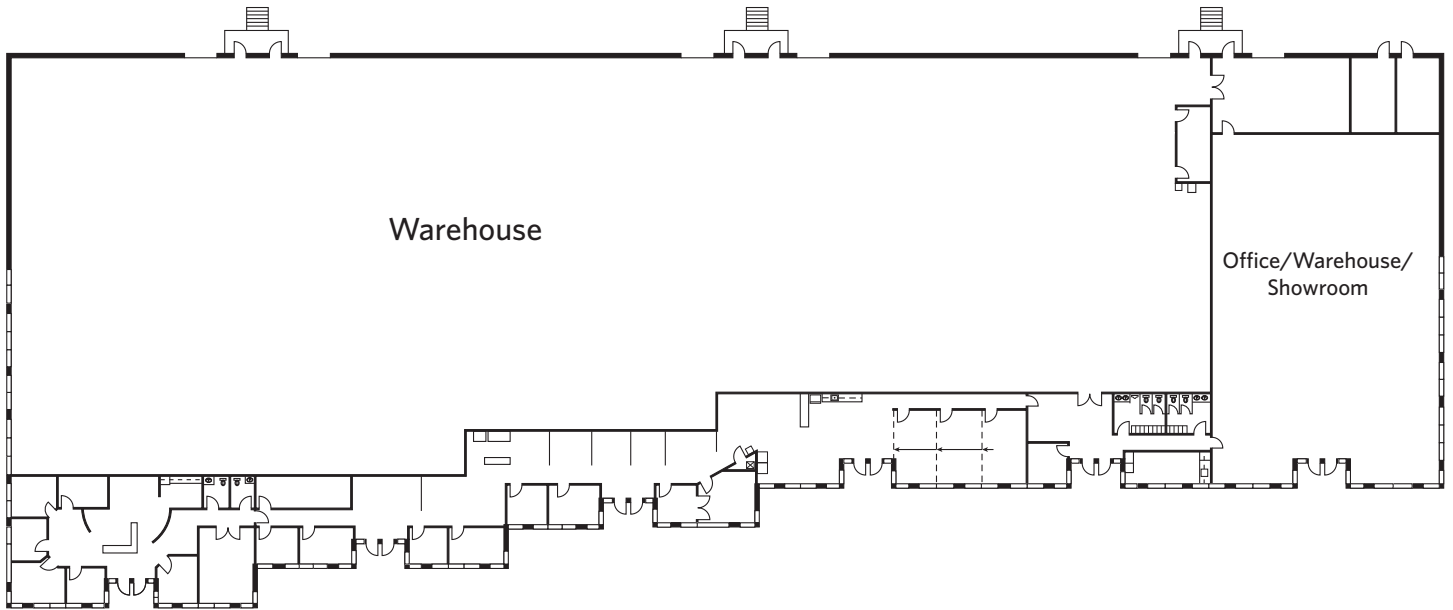
FOR SALE OR LEASE

40,000 SF

Office / Warehouse



Floor Plan
40,000 SF



CONTACT

Alan Coppola, SIOR
+1 443 574 1404
acoppola@klnb.com

Chris Kubler, CCIM
+1 443 574 1415
ckubler@klnb.com