

**FOR
LEASE**

Valley River Office Park

1500 Valley River Drive - Eugene, Oregon



**PREMIER OFFICE
ADDRESS IN A PARK
LIKE SETTING**

**AVAILABLE SPACES:
SUITE 240 - 1,208 RSF
SUITE 270 - 3,356 RSF
SUITE 330 - 1,501 RSF**

**GREAT AMENITIES
BEING NEXT TO
VALLEY RIVER CENTER**

**FREE PARKING
SHOWER / WORKOUT
FACILITY ON SITE**

**LEASE RATE:
\$1.65 SF
FULLY SERVICED**

For more information, contact:

TIM CAMPBELL

timc@campbellre.com | (541) 484-2214

Licensed in the State of Oregon

BILL NEWLAND

bill@campbellre.com | (541) 484-2214

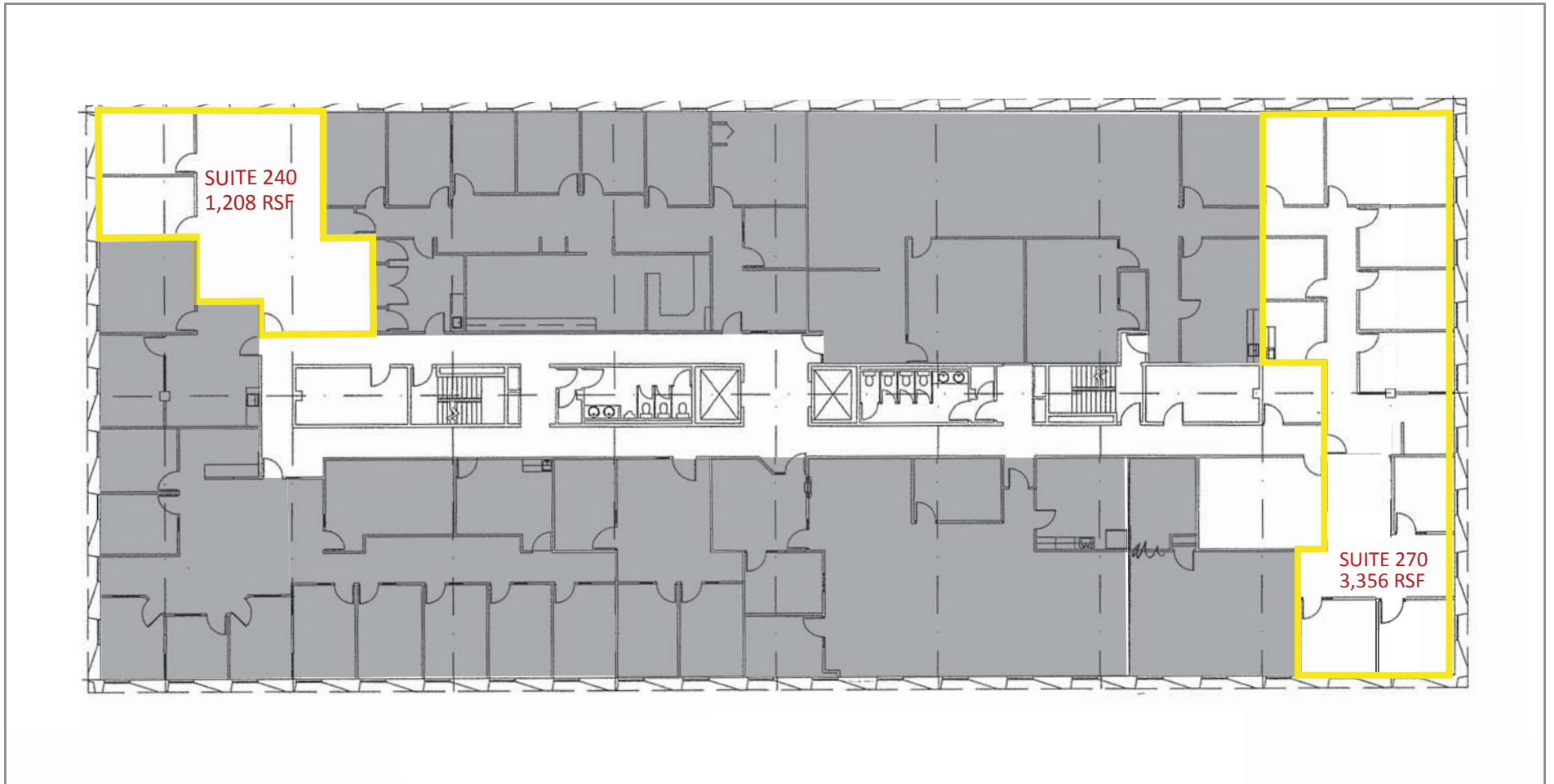
Licensed in the State of Oregon



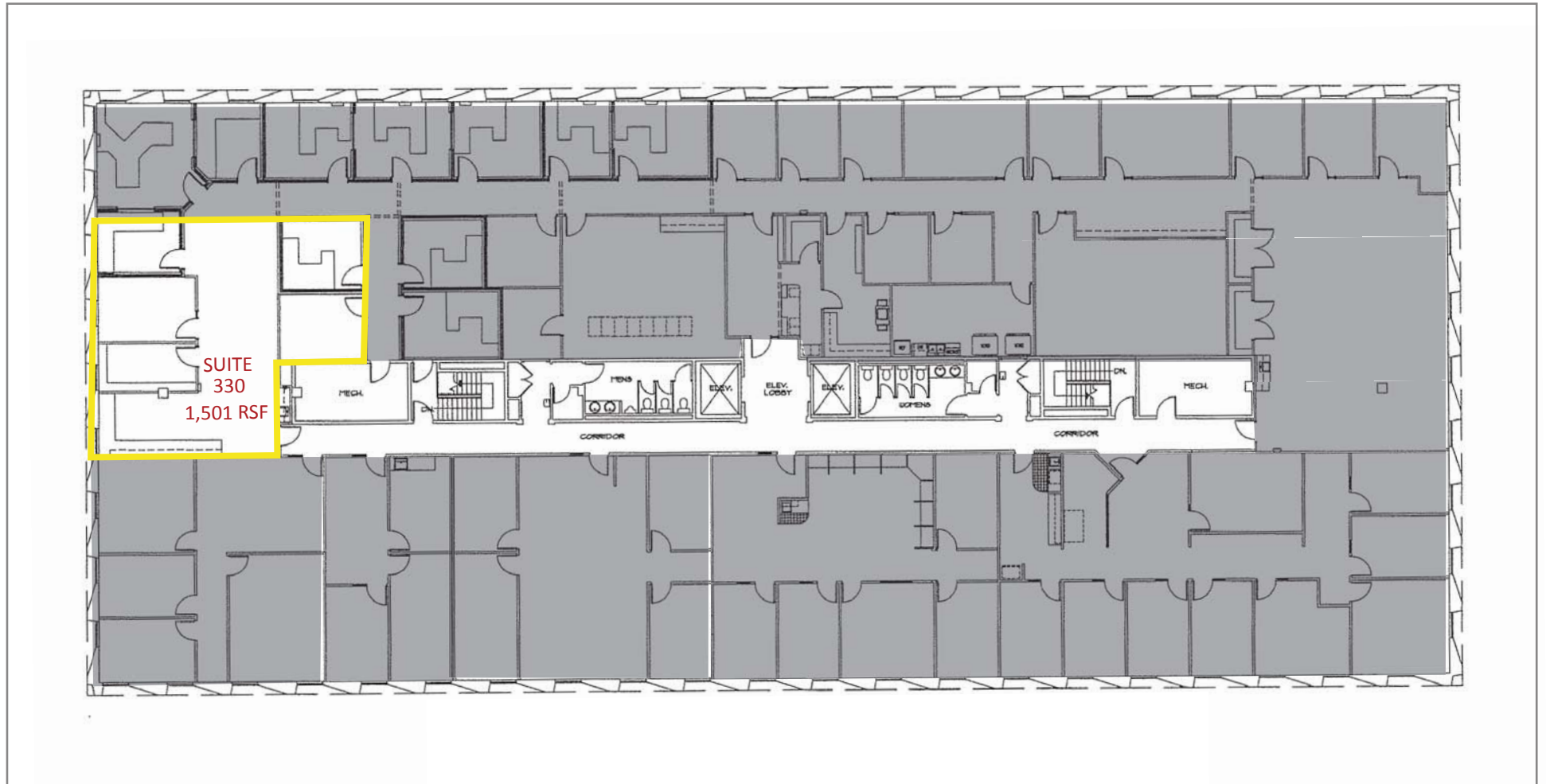
www.campbellre.com

The information in this package was obtained from sources deemed reliable, and is not guaranteed by agent. Package is subject to change, error or omission, prior sale or lease, correction or withdrawal. Any party contemplating purchase is urged to conduct their own independent study and inspection.

SECOND FLOOR SUITES



THIRD FLOOR SUITES



PROPERTY LOCATION

Valley River Office Park

Valley River Office Park is located in a beautiful park-like setting along the Willamette River and is fully equipped with a workout facility and men's and women's locker room including showers. Tenants will appreciate the Riverbank Trail System with bike and running paths; easy access to major arterial roads and highways, and the close proximity to Valley River Center and Downtown Eugene.

