

CUBEWORK®



**6200 Saint John Avenue
Kansas City, MO 64123**

 **(800) 338.6369**

 info@cubework.com

 www.cubework.com

 **LEARN
MORE**

KEY DISTANCE



BUILDING SPECS:

Floor: Reinforced Concrete
Column spacing: Main building area 18 x18
Shipping areas: 40 x36
Dock High Doors: 115
Sprinklers: Wet
Lighting: LED
Rail: Kansas City Terminal
Accessibility: I 435/170 via front St./24 hwy
Restrooms: 62
Year Built: 1914 - 1935 - 1963

Cubework- 1F: 89,000 sqft. (Building A,B,C)
Superflea- 2F: 188,000 sqft. (Building A, B, C)
Cubework- 3F: 186,000 sqft. (Building A, B, C)
Cubework- 4F: 160,000 sqft. (Building A, B, C)



7.1 mi
Charles B. Wheeler
Downtown Airport



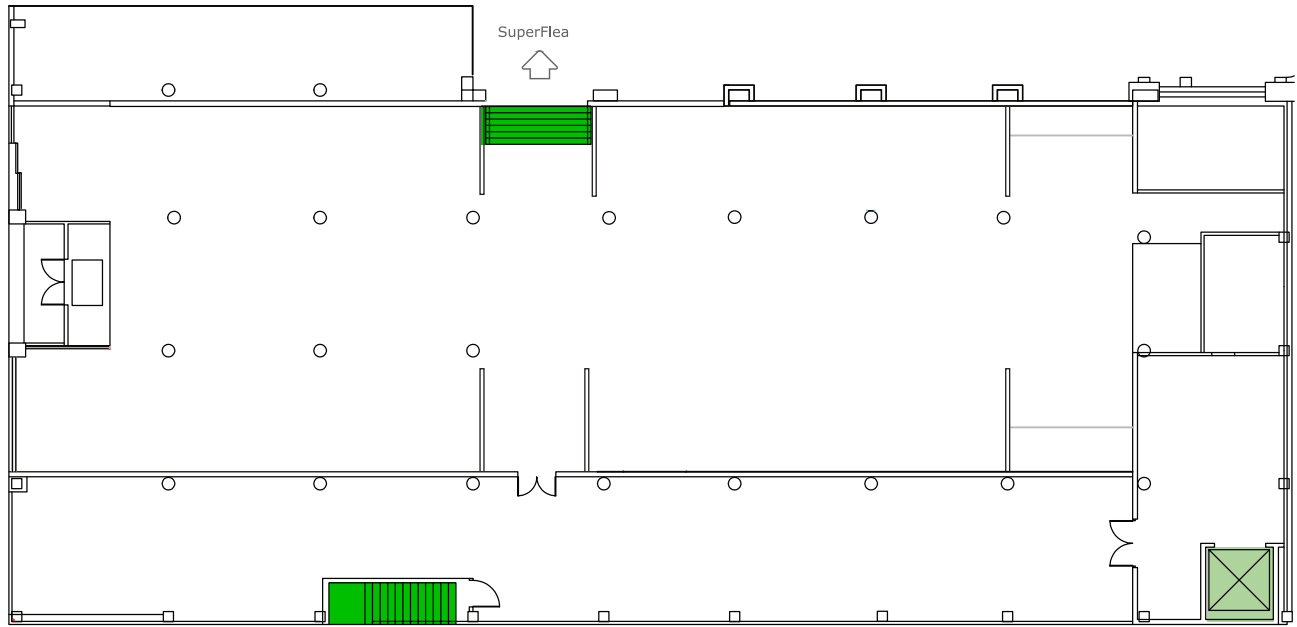
4.3 mi
UPS Store



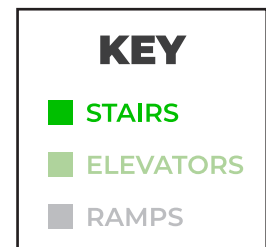
3.3 mi
United States Postal
Service (USPS)



1ST FLOOR



89,000 sqft.
(BUILDING A, B, C)



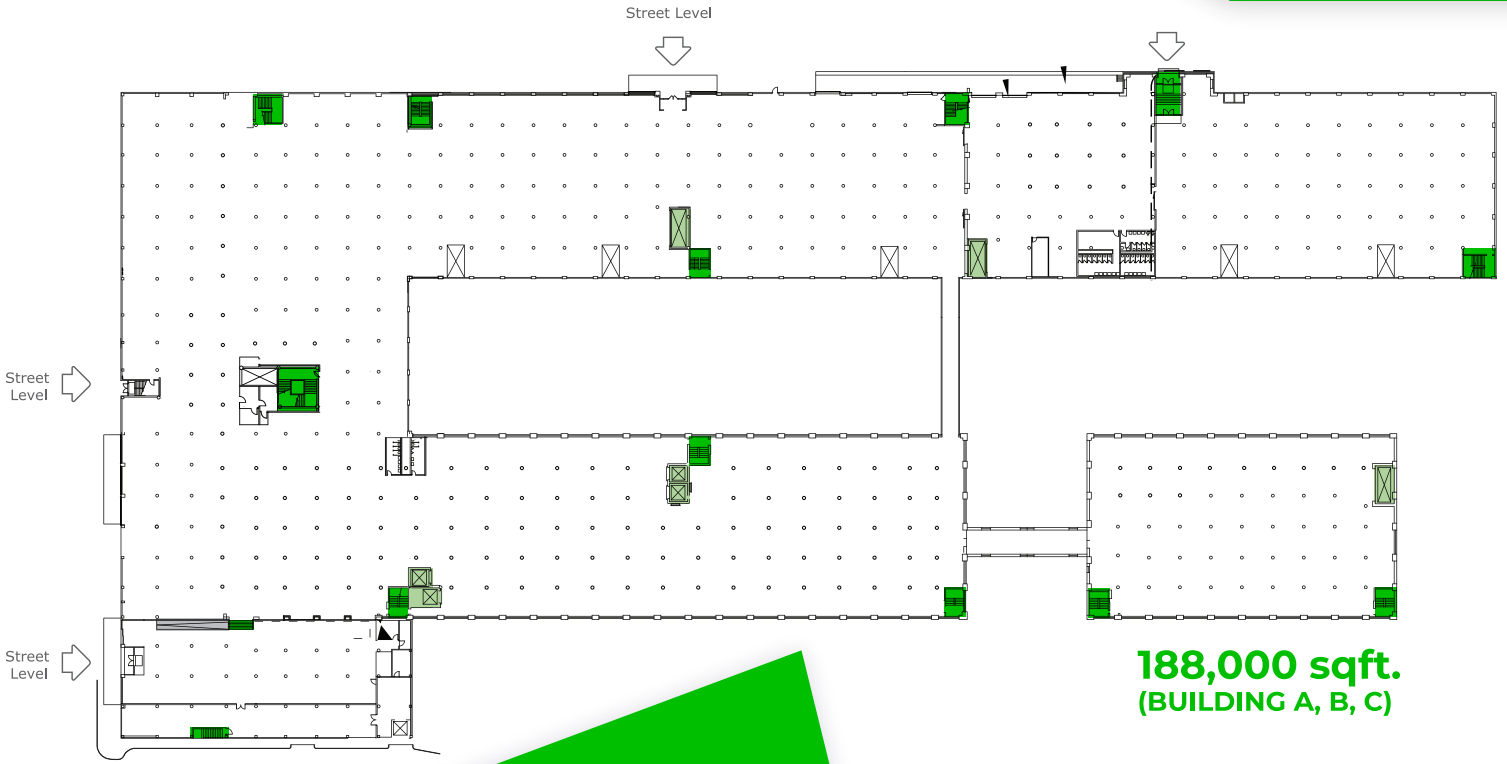
AMENITIES

- 24/7 Building Access
- High-Speed Internet
- Unique Common Areas
- Conference Rooms
- Coffee & Fresh Water
- Creative Workspaces
- 24/7 Customer Service
- Community Managers
- Mail and Package Handling
- Loading Docks
- CCTV, Surveillance System
- Daily Cleaning and Maintenance
- Business Class Printers
- Social Events
- Global Network
- Gym & Lockers
- Fully Furnished Offices
- Security Guards




SERVICES

- Front Desk Service
- Mail and Package Handling
- Daily Cleaning
- Office Supplies
- Business Class Printers
- Fresh Coffee & Tea
- Air Conditioning
- Surveillance & Night Security Guards
- Flexible On-demand Warehouse Terms
- Option to Merge

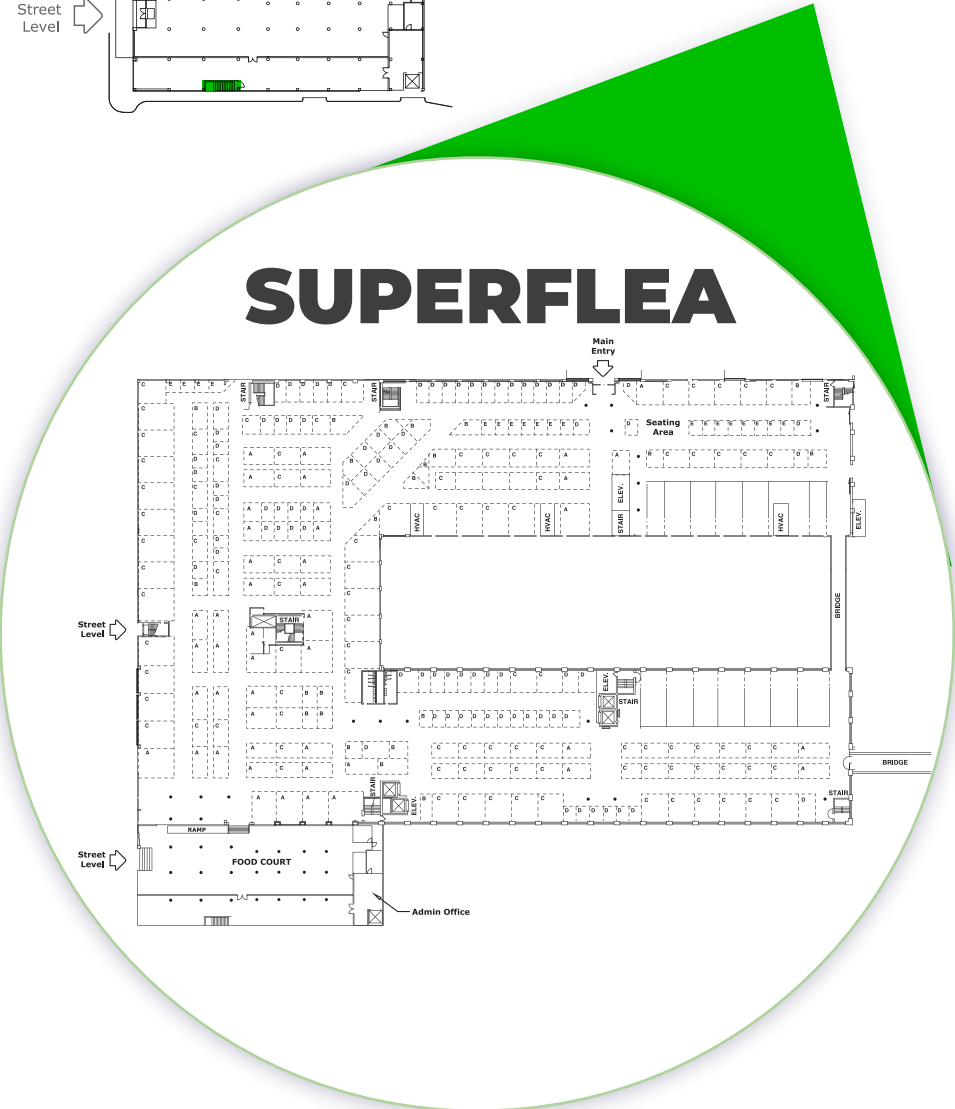
2ND FLOOR



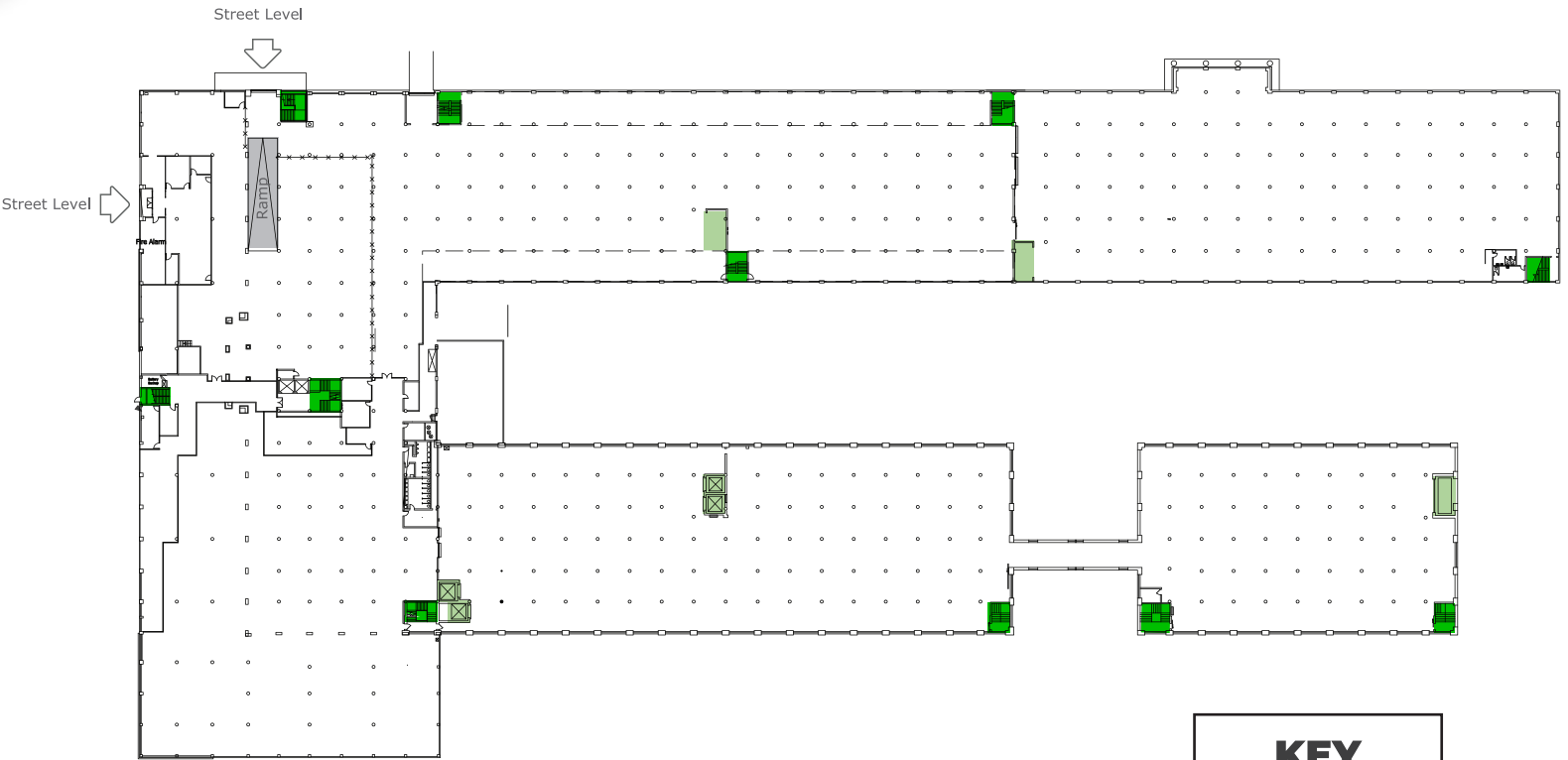
188,000 sqft.
(BUILDING A, B, C)

KEY	
	STAIRS
	ELEVATORS
	RAMPS

SUPERFLEA



3RD FLOOR



186,000 sqft.
(BUILDING A, B, C)

KEY	
■	STAIRS
■	ELEVATORS
■	RAMPS

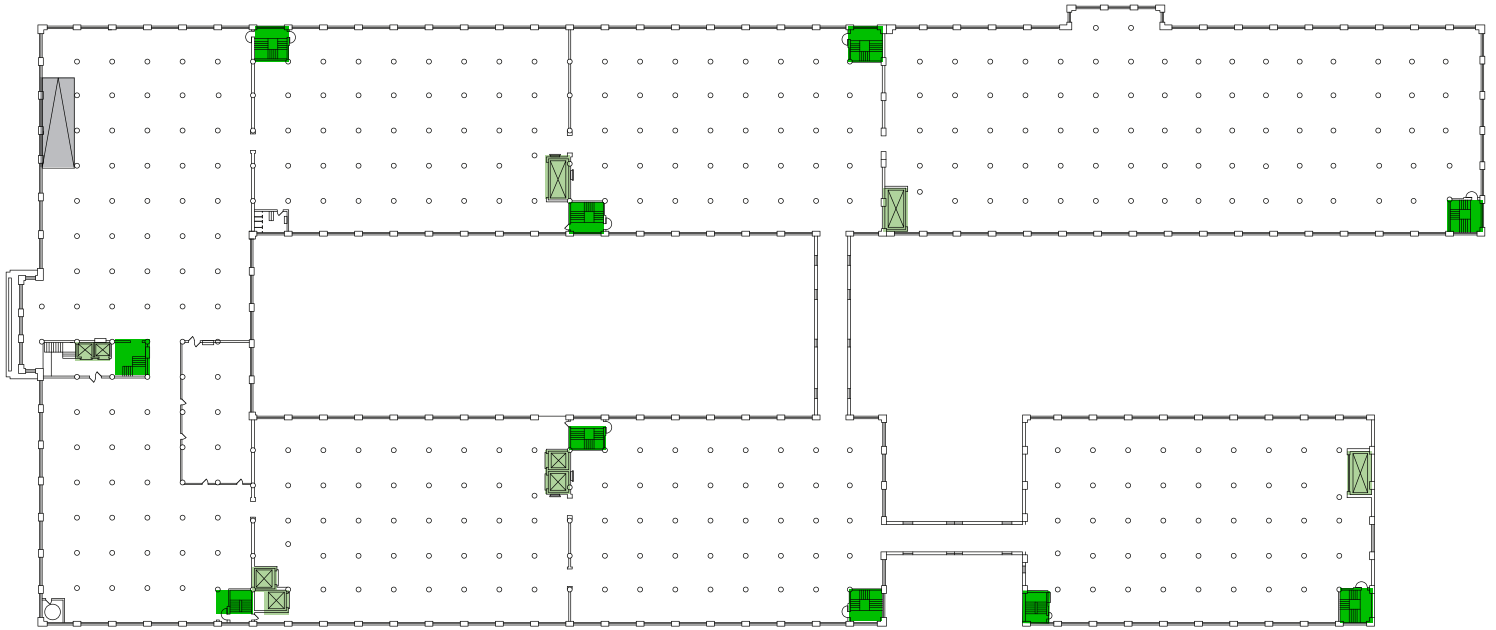
AMENITIES

- 24/7 Building Access
- High-Speed Internet
- Unique Common Areas
- Conference Rooms
- Coffee & Fresh Water
- Creative Workspaces
- 24/7 Customer Service
- Community Managers
- Mail and Package Handling
- Loading Docks
- CCTV, Surveillance System
- Daily Cleaning and Maintenance
- Business Class Printers
- Social Events
- Global Network
- Gym & Lockers
- Fully Furnished Offices
- Security Guards

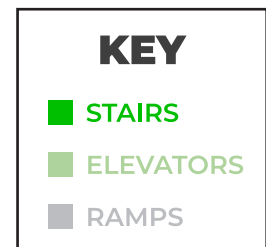
SERVICES

- Front Desk Service
- Mail and Package Handling
- Daily Cleaning
- Office Supplies
- Business Class Printers
- Fresh Coffee & Tea
- Air Conditioning
- Surveillance & Night Security Guards
- Flexible On-demand Warehouse Terms
- Option to Merge

4TH FLOOR



160,000 sqft.
(BUILDING A, B, C)



AMENITIES

- 24/7 Building Access
- Coffee & Fresh Water
- Loading Docks
- Global Network
- High-Speed Internet
- Creative Workspaces
- CCTV, Surveillance System
- Gym & Lockers
- Unique Common Areas
- 24/7 Customer Service
- Daily Cleaning and Maintenance
- Fully Furnished Offices
- Conference Rooms
- Community Managers
- Business Class Printers
- Security Guards
- Mail and Package Handling
- Social Events

SERVICES

- Front Desk Service
- Business Class Printers
- Surveillance & Night Security Guards
- Mail and Package Handling
- Fresh Coffee & Tea
- Flexible On-demand Warehouse Terms
- Daily Cleaning
- Air Conditioning
- Office Supplies
- Option to Merge

BUILDING PHOTOS

