



FOR LEASE | OFFICE

# THE DIAMOND RESOURCES BUILDING

**63 INVERNESS DR E  
ENGLEWOOD, CO 80112**

BILL WOODWARD  
720.274.8313  
bwoodward@risecps.com

LINDA KABOTH  
720.274.8374  
lkaboth@risecps.com



# THE DIAMOND RESOURCES BUILDING



## OFFERING SUMMARY

Available SF:	2,752 SF
Lease Rate:	\$22.00 SF/yr (Full Service)
Year Built:	1990
Building Size:	29,350 SF
Renovated:	2012
Zoning:	I-1
Market:	Denver
Submarket:	Inverness

## PROPERTY HIGHLIGHTS

- Beautifully finished building with an intimate feel and modern color palette
- Just 25 minutes from downtown Denver and 35 minutes from DIA
- Professional office building with high end finishes
- High tech executive office
- Keyless entry suite access system

BILL WOODWARD

720.274.8313  
bwoodward@risecps.com

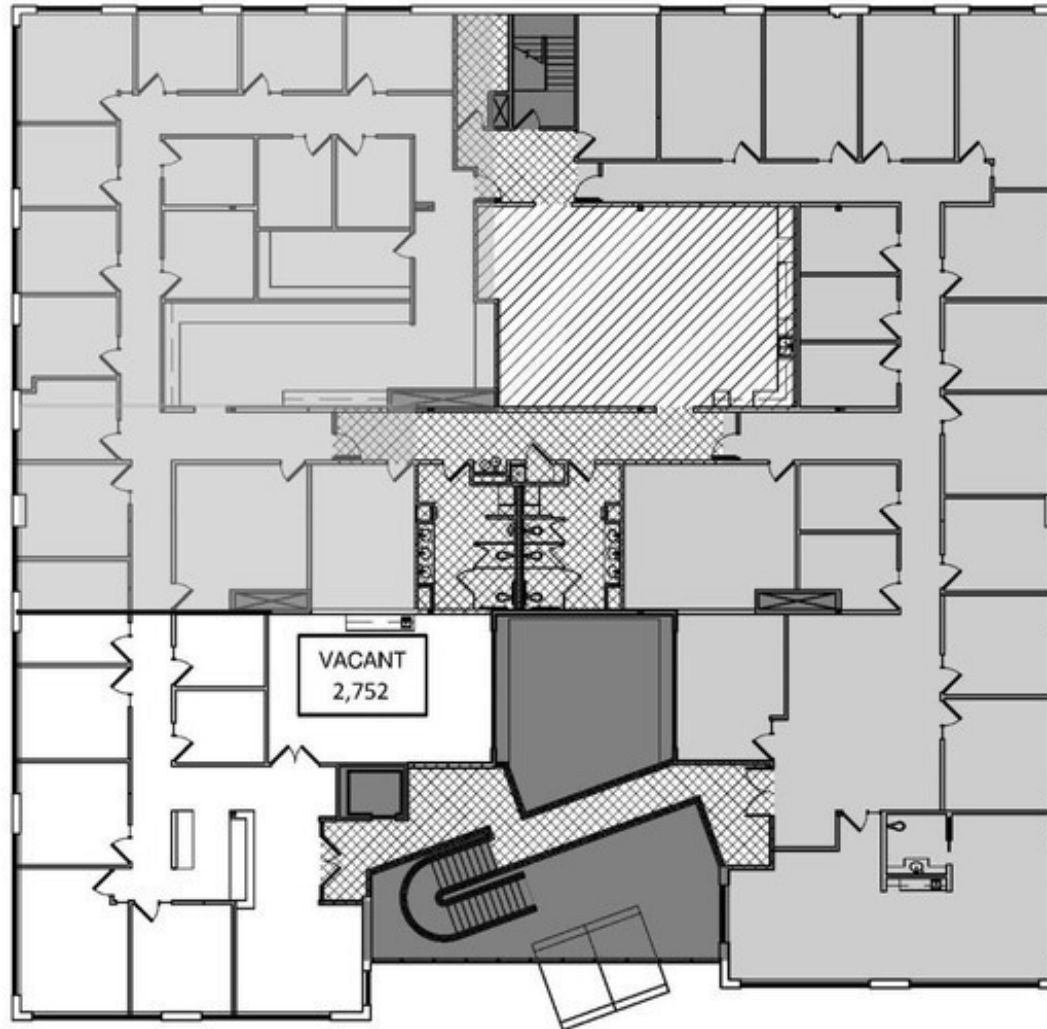
LINDA KABOTH

720.274.8374  
lkaboth@risecps.com

63 INVERNESS DR E | ENGLEWOOD, CO 80112

FOR LEASE | OFFICE

# THE DIAMOND RESOURCES BUILDING



Suite 200 | 2,752 SF

BILL WOODWARD

720.274.8313

bwoodward@risecps.com

LINDA KABOTH

720.274.8374

lkaboth@risecps.com

63 INVERNESS DR E | ENGLEWOOD, CO 80112

FOR LEASE | OFFICE

# THE DIAMOND RESOURCES BUILDING



BILL WOODWARD

720.274.8313  
bwoodward@risecps.com

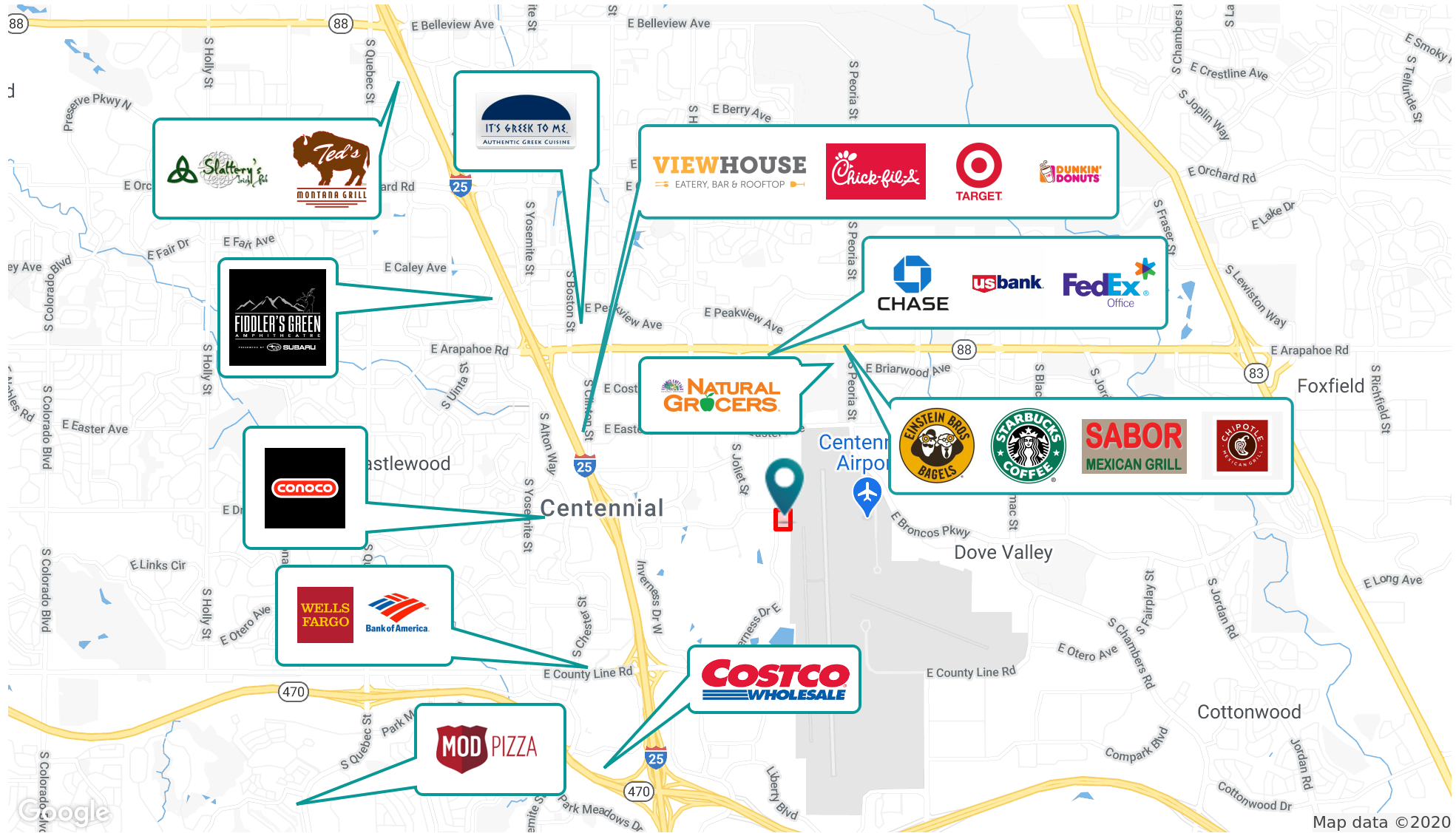
LINDA KABOTH

720.274.8374  
lkaboth@risecps.com

63 INVERNESS DR E | ENGLEWOOD, CO 80112

FOR LEASE | OFFICE

# THE DIAMOND RESOURCES BUILDING



Map data ©2020

BILL WOODWARD

720.274.8313  
bwoodward@risecps.com

LINDA KABOTH

720.274.8374  
lkaboth@risecps.com

63 INVERNESS DR E | ENGLEWOOD, CO 80112