

# 7950 NATIONAL DRIVE LIVERMORE, CA



## PROPERTY INFORMATION

## AREA MAP

- Approximately 39,860±SF
- 31,860±SF ground floor
- 7,154±SF second floor office
- 100% climate controlled production area
- Grade level door access
- Potential to add dock high door
- Parking 2.5/1,000 square feet (98± stalls)
- Power: 1,200 AMP 277/480V
- Office layout can be modified
- **Lease rate: \$0.60/SF NNN**



**BRETT HOLDEN**

LIC. ID# 00883982

BHOLDEN@LEE-ASSOCIATES.COM

925-737-4141

**MARK PLEIS**

LIC. ID# 00934662

MPLAIS@LEE-ASSOCIATES.COM

925-737-4148

 **LEE &  
ASSOCIATES®**  
COMMERCIAL REAL ESTATE SERVICES

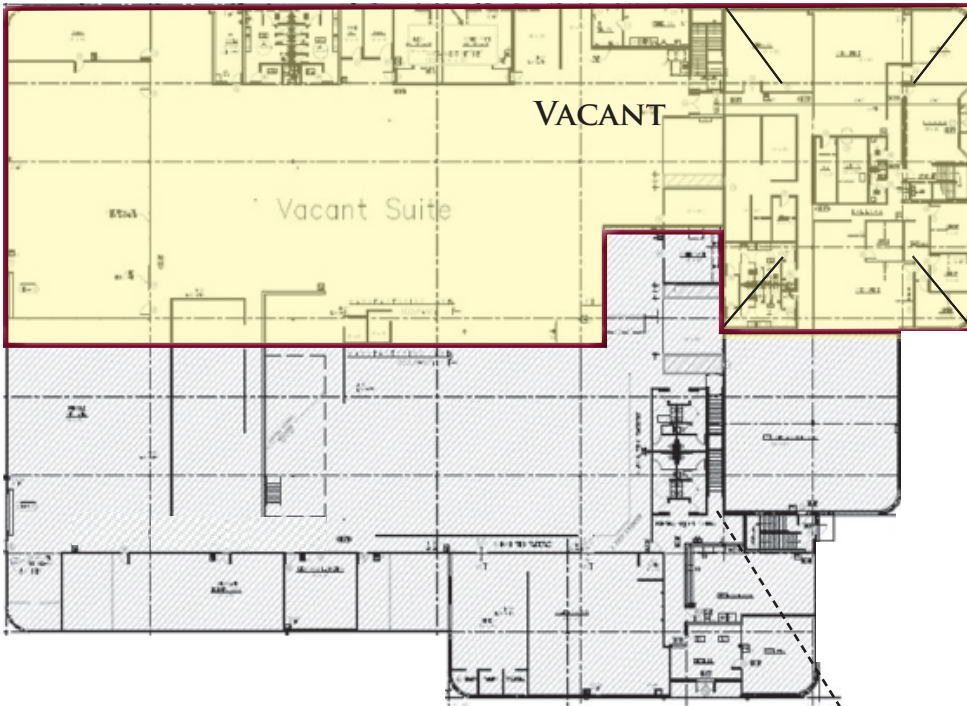
The information contained herein is based on estimates and assumptions and is presented for illustration purposes only.  
No representations, warranties or guarantees of any kind are made.



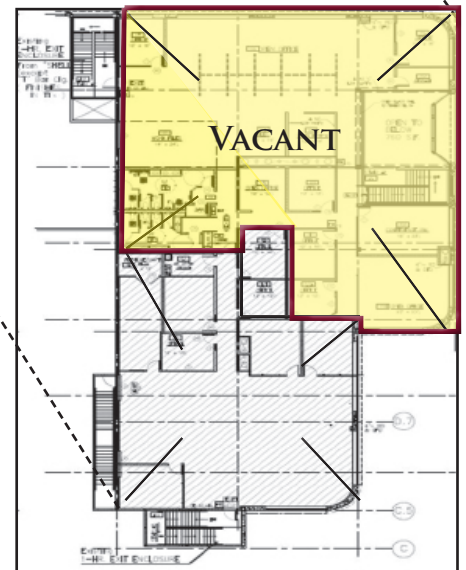
# 7950 NATIONAL DRIVE LIVERMORE, CA

## FLOOR PLAN & PHOTOS

### 1ST FLOOR PLAN



### 2ND FLOOR PLAN



**BRETT HOLDEN**

LIC. ID# 00883982

BHOLDEN@LEE-ASSOCIATES.COM

925-737-4141

**MARK PLEIS**

LIC. ID# 00934662

MPLAIS@LEE-ASSOCIATES.COM

925-737-4148

 **LEE &  
ASSOCIATES®**  
COMMERCIAL REAL ESTATE SERVICES

The information contained herein is based on estimates and assumptions and is presented for illustration purposes only.  
No representations, warranties or guarantees of any kind are made.