

# CUBEWORK®



9020 Murphy Road  
Woodridge, IL 60517

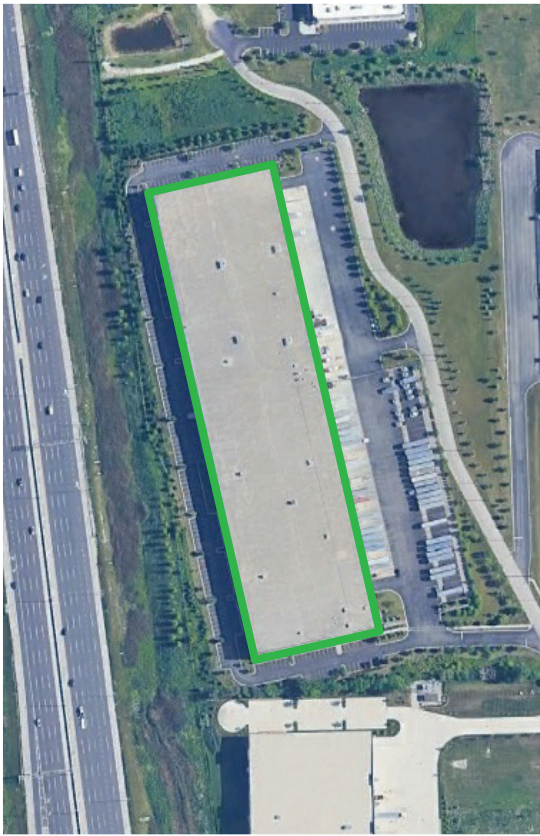
 **(800) 338.6369**

 [info@cubework.com](mailto:info@cubework.com)

 [www.cubework.com](http://www.cubework.com)

 **LEARN  
MORE**

# KEY DISTANCE



## BUILDING SPECS:

**Building size:** 135,217 SF

**Warehouse available:** 300-50,000 SF

**Private office available:** 200-2,500 SF

**Floor:** Reinforced Concrete

**Column Spacing:** 50' x 52'

**Clear height:** 30'

**Drive-In Bays:** 2

**Exterior Dock Doors:** 20

**Standard Parking Spaces:** 337



**7.7 mi**

Chicago Boling  
International Airport



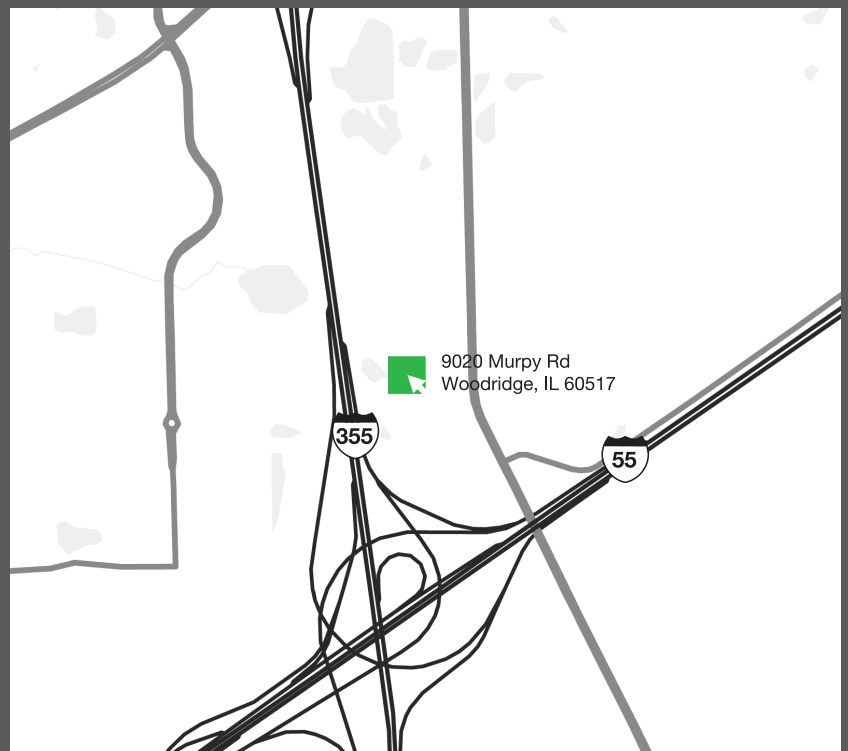
**2.0 mi**

UPS Store

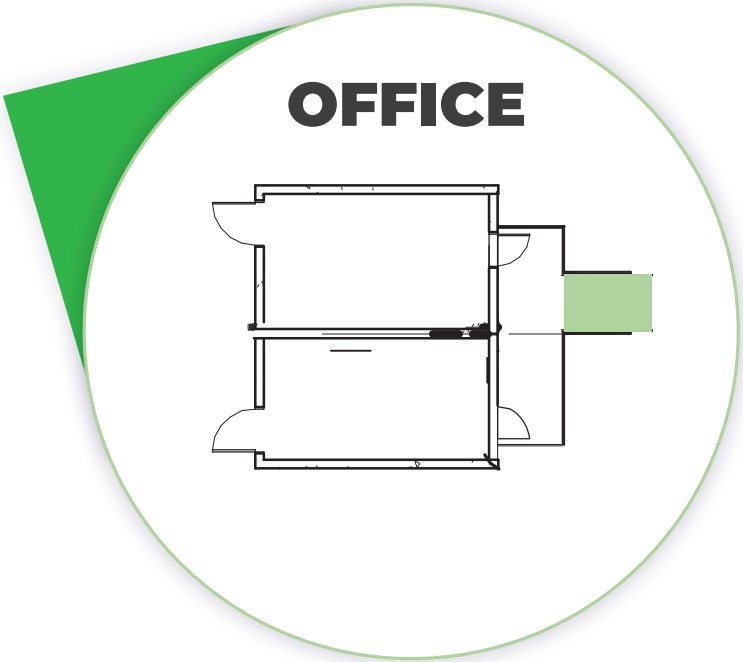
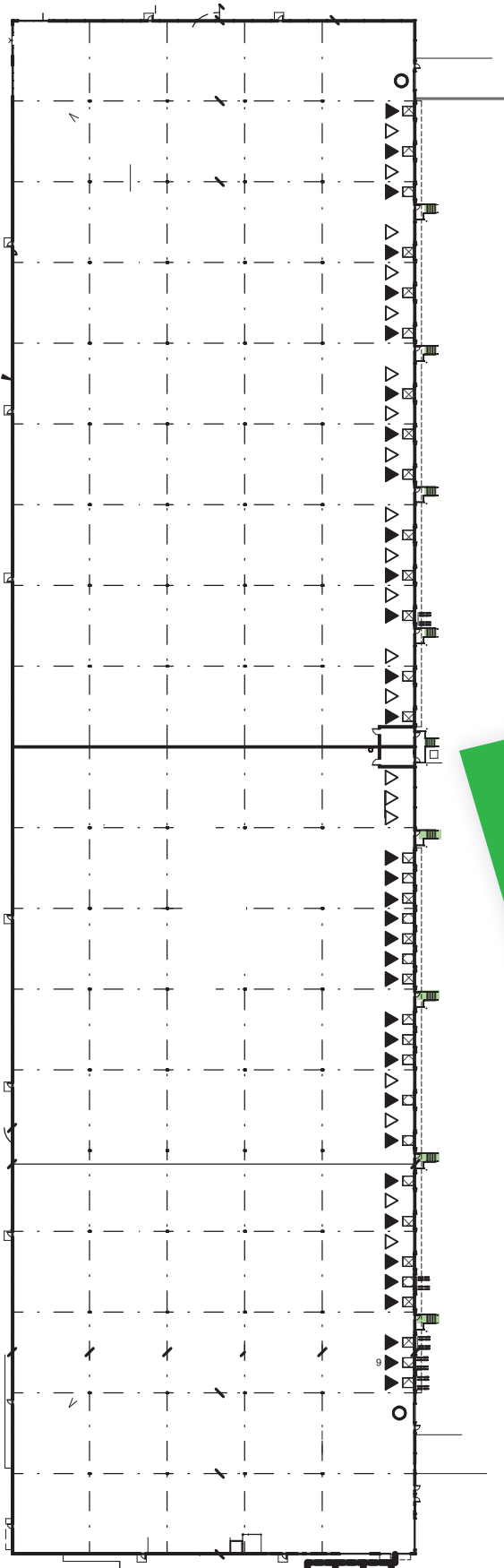


**5.2 mi**

United States Postal  
Service (USPS)



# BUILDING FEATURES



**KEY**

- RESTROOMS
- STAIRS



## AMENITIES

---

- 24/7 Building Access
- High-Speed Internet
- Unique Common Areas
- Conference Rooms
- Coffee & Fresh Water
- Creative Workspaces
- 24/7 Customer Service
- Community Managers
- Mail and Package Handling
- Loading Docks
- CCTV, Surveillance System
- Daily Cleaning and Maintenance
- Business Class Printers
- Social Events
- Global Network
- Gym & Lockers
- Fully Furnished Offices
- Security Guards

## SERVICES

---

- Front Desk Service
- Mail and Package Handling
- Office Supplies
- Business Class Printers
- Fresh Coffee & Tea
- Air Conditioning
- Security Guards
- Flexible On-demand Warehouse Terms
- Option to Merge
- Surveillance & Night

Amenities vary on location

# FACILITY PHOTOS



FOR MORE INFORMATION CONTACT

 **(800) 338.6369**

 [info@cubework.com](mailto:info@cubework.com)

 [www.cubework.com](http://www.cubework.com)