



30301

LOBBY & RESTROOM RENOVATIONS COMPLETE

# AGOURA HILLS CENTER

30301 AGOURA ROAD | AGOURA HILLS, CALIFORNIA 91301

**CBRE**



 **PROPERTY OVERVIEW**



**PROPERTY DESCRIPTION**

<b>AVAILABLE</b>	Suite 110 - 6,693 RSF (Available 6/1/19)
<b>ASKING RATE</b>	\$2.50/FSG/SF/Mo.
<b>PARKING RATIO</b>	4/1,000 (potential for more)

**PROPERTY HIGHLIGHTS**

- » Double door identity off main lobby
- » Recently renovated lobby and restrooms
- » Immediate access to the 101 Ventura Freeway
- » Freeway identity with building-top and monument signage opportunities
- » Abundant surface parking

For more information please contact:

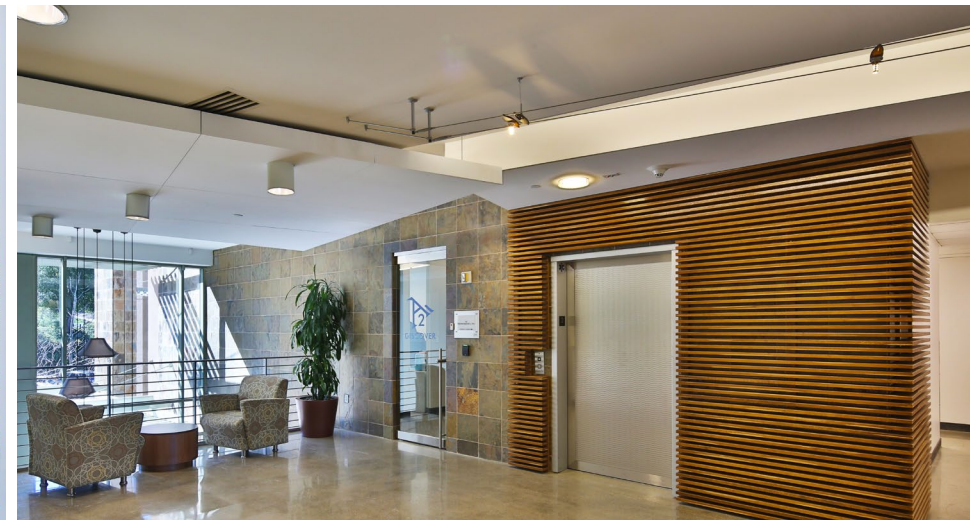
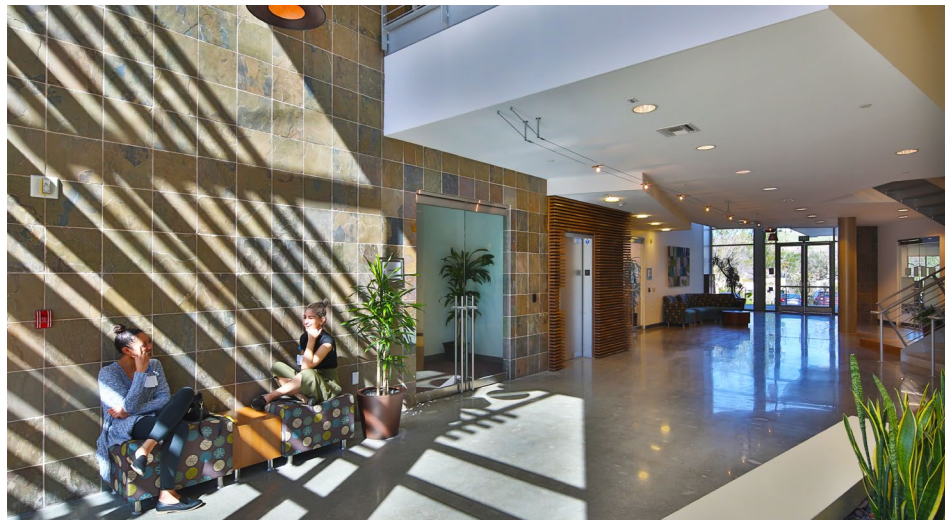
**MATTHEW HEYN** | Lic. 01306148 | +1 818 907 4619 | matt.heyn@cbre.com

**CAITLIN HOFFMAN** | Lic. 01935762 | +1 818 502 6787 | caitlin.hoffman@cbre.com





# GALLERY



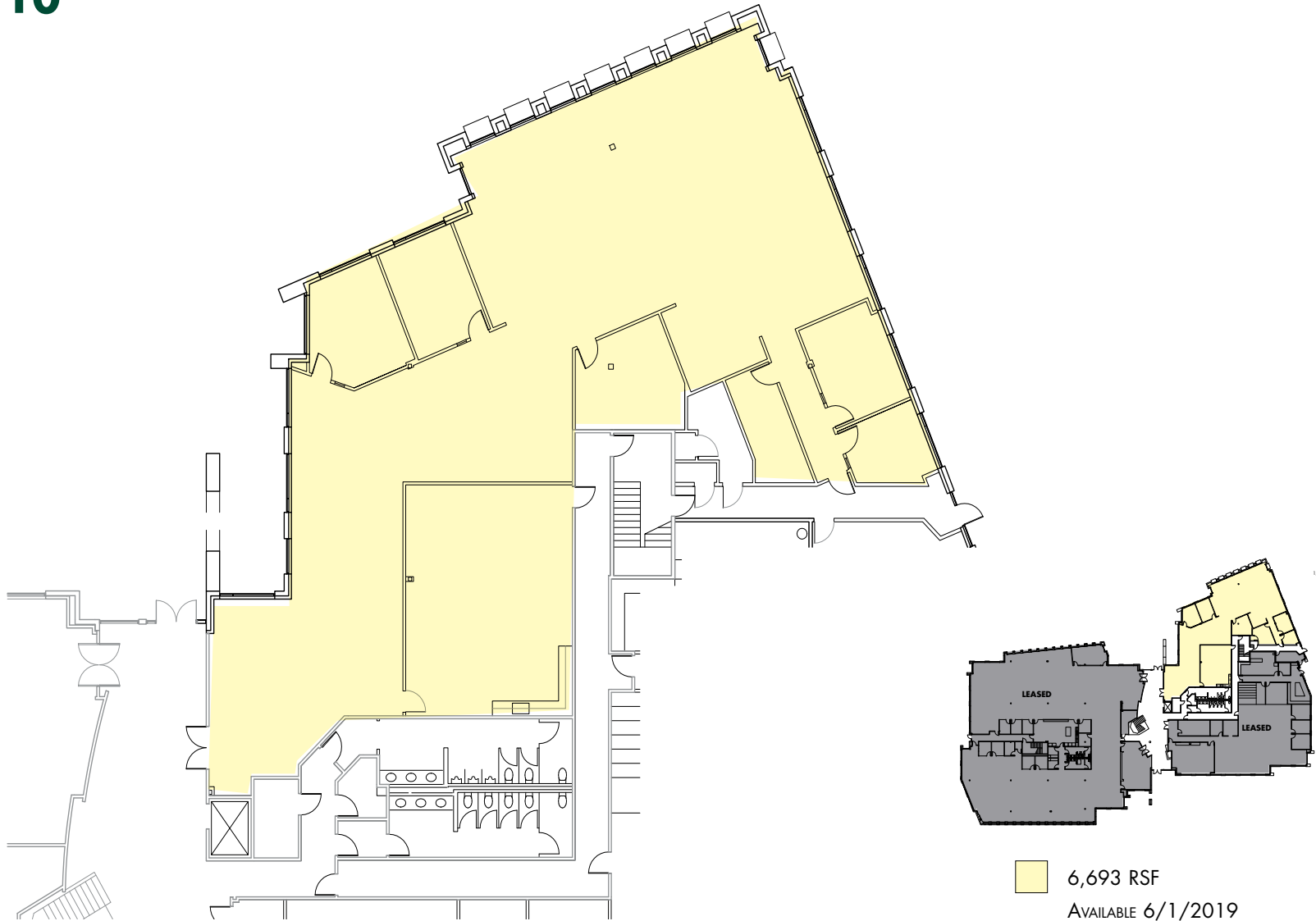
For more information please contact:

**MATTHEW HEYN** | Lic. 01306148 | +1 818 907 4619 | [matt.heyn@cbre.com](mailto:matt.heyn@cbre.com)

**CAITLIN HOFFMAN** | Lic. 01935762 | +1 818 502 6787 | [caitlin.hoffman@cbre.com](mailto:caitlin.hoffman@cbre.com)



# SUITE 110



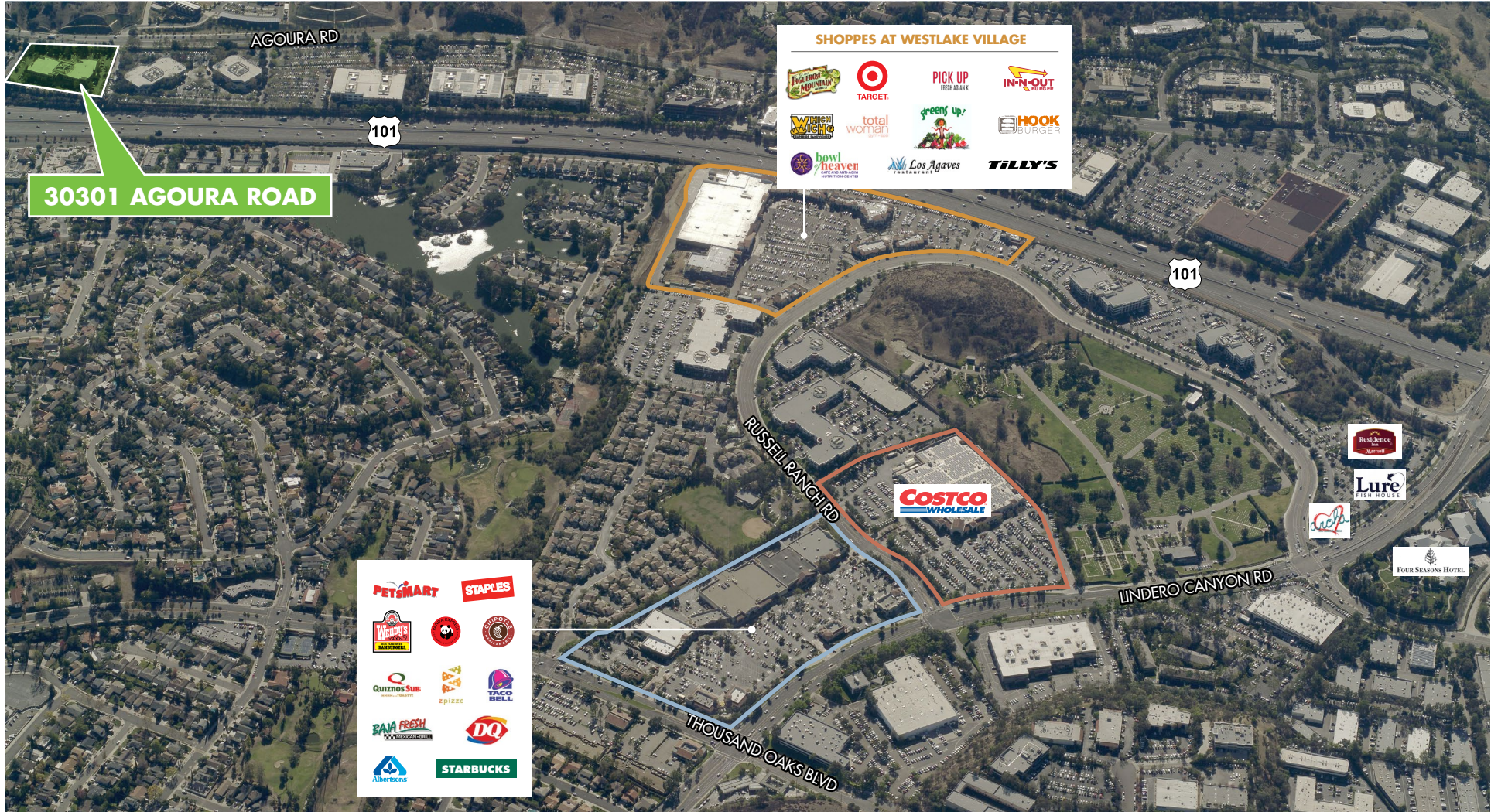
For more information please contact:

**MATTHEW HEYN** | Lic. 01306148 | +1 818 907 4619 | [matt.heyn@cbre.com](mailto:matt.heyn@cbre.com)

**CAITLIN HOFFMAN** | Lic. 01935762 | +1 818 502 6787 | [caitlin.hoffman@cbre.com](mailto:caitlin.hoffman@cbre.com)



 **LOCATION**



© 2019 CBRE, Inc. This information has been obtained from sources believed reliable. We have not verified it and make no guarantee, warranty or representation about it. Any projections, opinions, assumptions or estimates used are for example only and do not represent the current or future performance of the property. You and your advisors should conduct a careful, independent investigation of the property to determine to your satisfaction the suitability of the property for your needs. Photos herein are the property of their respective owners and use of these images without the express written consent of the owner is prohibited. CBRE and the CBRE logo are service marks of CBRE, Inc. and/or its affiliated or related companies in the United States and other countries. All other marks displayed on this document are the property of their respective owners.

For more information please contact:  
**MATTHEW HEYN** | Lic. 01306148 | +1 818 907 4619 | matt.heyn@cbre.com  
**CAITLIN HOFFMAN** | Lic. 01935762 | +1 818 502 6787 | caitlin.hoffman@cbre.com

