

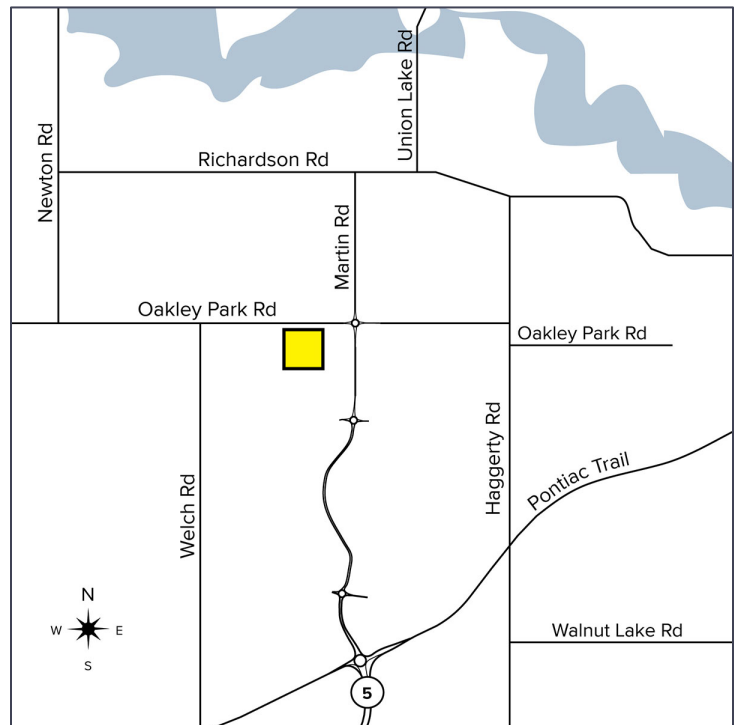
RARE USER/INVESTOR OPPORTUNITY



2000 Oakley Park Road | Commerce Twp, MI

PROPERTY FEATURES

- 49,100 square feet hi-tech building for sale
- 11,290 square feet of contiguous office space for lease on the second floor with possibility of up to 16,377 with relocation option for existing tenant
- Built in 1985 with renovations in 2019
- (4) 12 x 14 grade level doors, (2) truckwells
- Rare user/investor opportunity in Commerce Township
- Great value-add opportunity
- 73.08% occupancy rate
- Sale price: \$3,250,000 (\$66.19/sq. ft.)



For more information, please contact:

JASON STOUGH

(248) 948 4180

jstough@signatureassociates.com

CHRISTOPHER CALVANO

(248) 359 0610

ccalvano@signatureassociates.com



**SIGNATURE
ASSOCIATES**

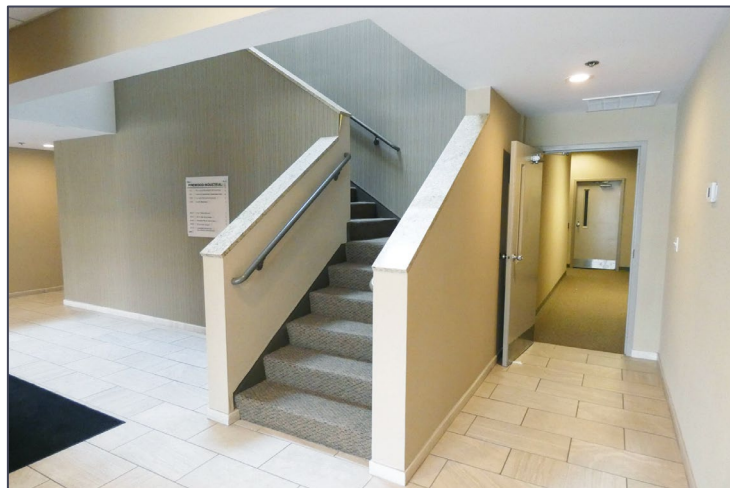
KNOW SIGNATURE | KNOW RESULTS

2000 Oakley Park Road – Commerce Twp, MI

Hi-Tech Property For User/Investment Sale

49,100
Square Feet

Lobby Photos



For more information, please contact:

JASON STOUGH

(248) 948 4180

jstough@signatureassociates.com

CHRISTOPHER CALVANO

(248) 359 0610

ccalvano@signatureassociates.com

SIGNATURE ASSOCIATES

One Towne Square, Suite 1200

Southfield, MI 48076

www.signatureassociates.com