

# 3,500 SF OFFICE / SERVICE CENTER / FLEX SPACE AVAILABLE FOR LEASE

135-155 HAMILTON INDUSTRIAL COURT | WENTZVILLE, MISSOURI 63385



## 145 HAMILTON INDUSTRIAL COURT | WENTZVILLE, MO 63385

- 3,500 SF office / service center / flex space
- Grade level drive-in
- Ample parking
- Great location down the street from all Wentzville amenities - restaurants, retail and more
- Adjacent to the GM Wentzville plant with easy access to Wentzville Pkwy, W. Meyer Road, and Interstates 70 and 64
- **LEASE RATE: \$12.00 PSF NNN** (\$3.25 NNNs)

For More Information, Please Contact:

**TONY GIARRATANO**  
tony@hutkin.com  
314.708.4922 o.  
314.276.2352 m.

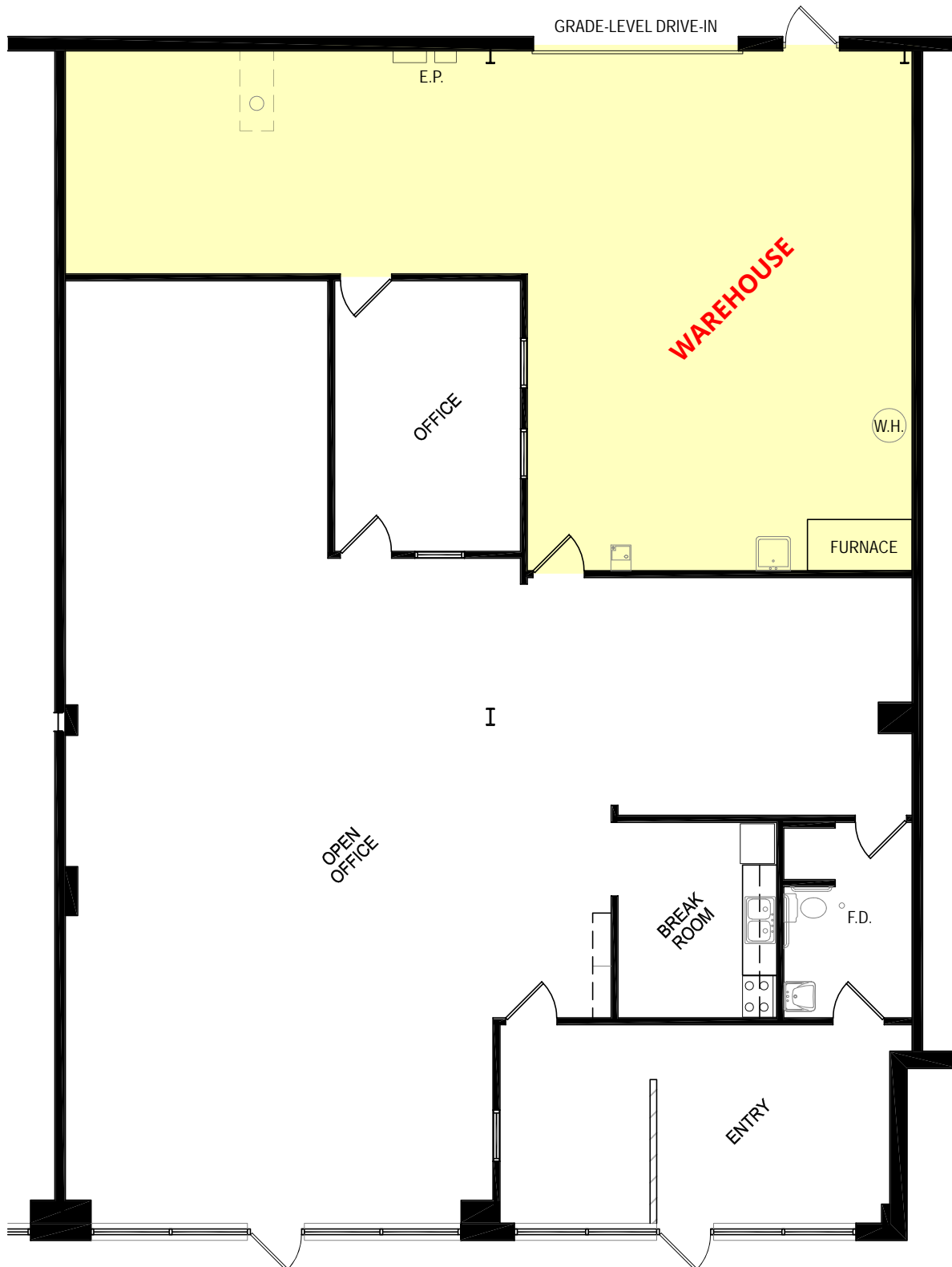
**BO KEEFER**  
bkeefe@hutkin.com  
314.708.1258 o.  
314.973.1242 m.

**HUTKIN**  
DEVELOPMENT COMPANY

10829 OLIVE BOULEVARD, SUITE 200  
ST. LOUIS, MISSOURI 63141  
314.872.9140 PHONE  
314.872.9001 FAX  
WWW.HUTKIN.COM

# 3,500 SF OFFICE / SERVICE CENTER / FLEX SPACE AVAILABLE FOR LEASE

135-155 HAMILTON INDUSTRIAL COURT | WENTZVILLE, MISSOURI 63385

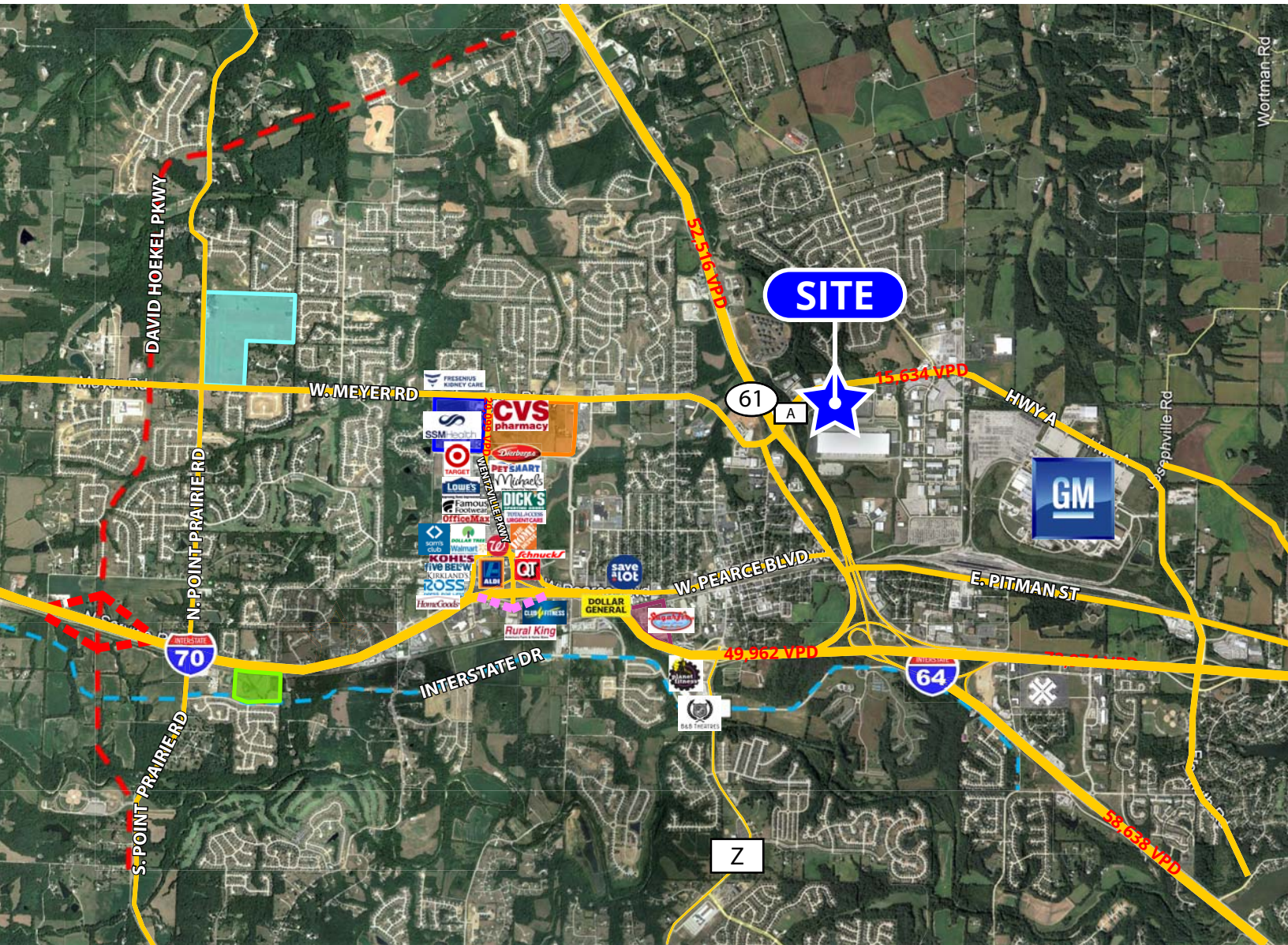


145 HAMILTON INDUSTRIAL CT  
3,500 SF



# 3,500 SF OFFICE / SERVICE CENTER / FLEX SPACE AVAILABLE FOR LEASE

135-155 HAMILTON INDUSTRIAL COURT | WENTZVILLE, MISSOURI 63385



**135-155 HAMILTON INDUSTRIAL CT**



= 3,764 employees



= 17,400 student enrollment  
= 2,700 employees

- = David Hoekel Pkwy & new interchange
- = enhanced interchange
- = Interstate Drive

- = "The Junction" 174-unit mixed-use development
- = "The Bend" 80-acre mixed-use development
- = SSM Health St. Joseph Hospital (86 staffed beds)
- = new 100+ acre, 310,000 SF North Point High School (Fall 2021)
- = new 31-acre, 105,000 SF Journey Elementary School



# 3,500 SF OFFICE / SERVICE CENTER / FLEX SPACE AVAILABLE FOR LEASE

135-155 HAMILTON INDUSTRIAL COURT | WENTZVILLE, MISSOURI 63385



## 1-MILE DEMOGRAPHICS

|                        |          |
|------------------------|----------|
| POPULATION:            | 6,718    |
| NO. OF HOUSEHOLDS:     | 2,460    |
| AVG. HOUSEHOLD INCOME: | \$82,166 |

## 3-MILE DEMOGRAPHICS

|                        |          |
|------------------------|----------|
| POPULATION:            | 36,884   |
| NO. OF HOUSEHOLDS:     | 13,075   |
| AVG. HOUSEHOLD INCOME: | \$93,176 |

## 5-MILE DEMOGRAPHICS

|                        |           |
|------------------------|-----------|
| POPULATION:            | 68,695    |
| NO. OF HOUSEHOLDS:     | 24,860    |
| AVG. HOUSEHOLD INCOME: | \$102,894 |