

Prime River North Retail Condo

For Sale or Lease

730 N Wells

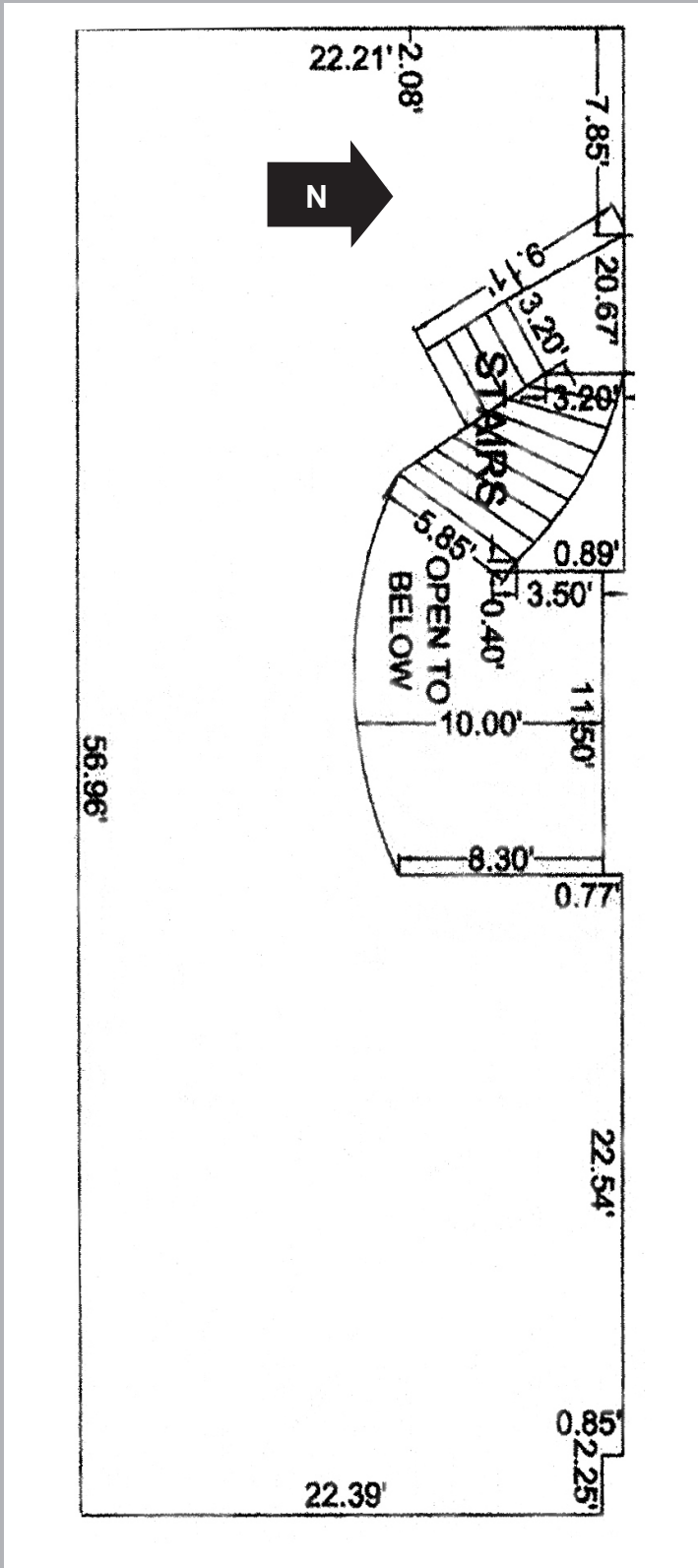


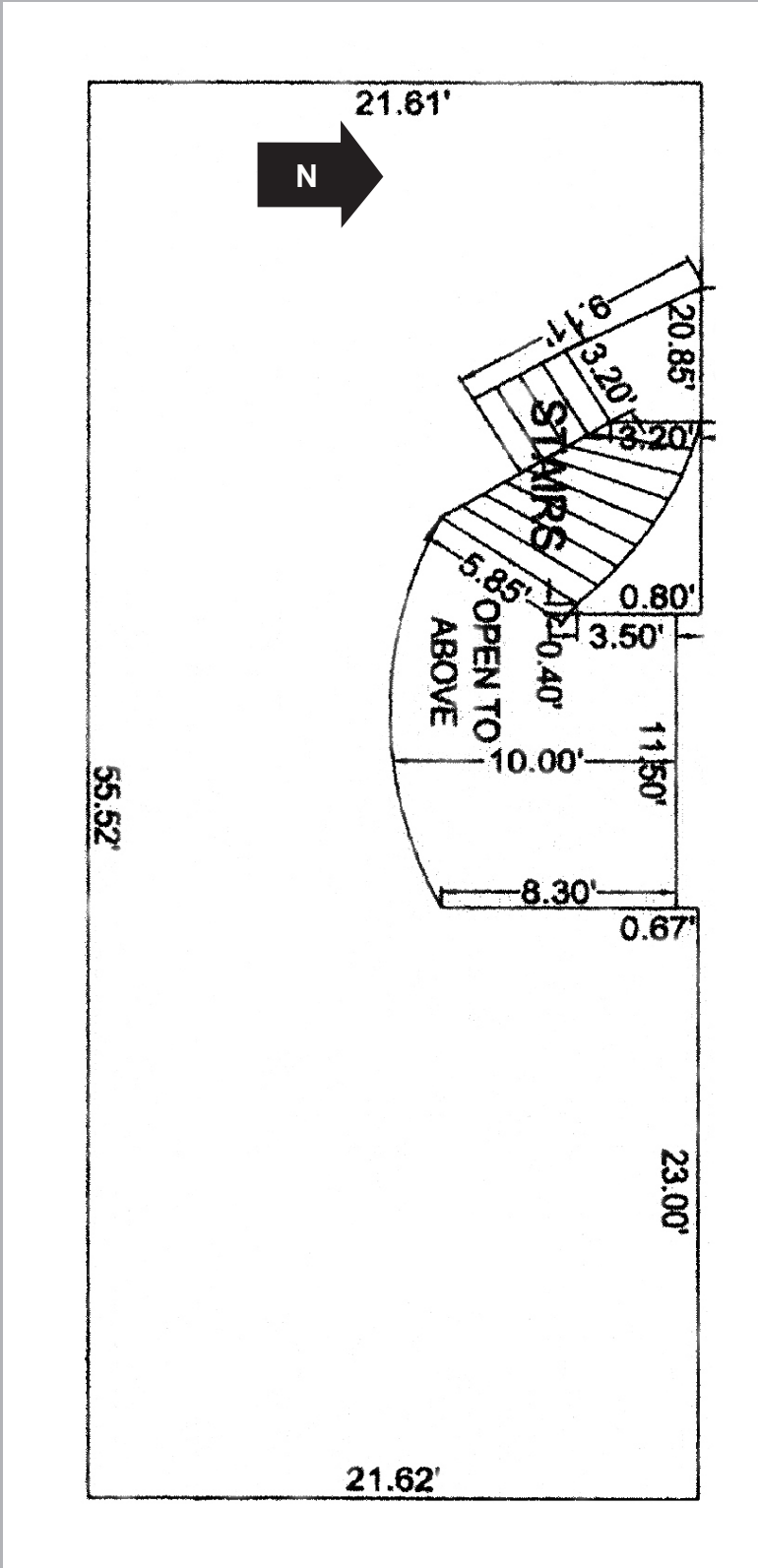
Sale: \$1,250,000

Lease: 2,552 SF – \$45 SF MG

- Choice corner location
- 1st floor & lower level
- Retail & office use
- Exceptional window line
- 2 minutes to CTA buses/trains
- DX-5 Zoning







730 N Wells Area Demographics

Population

Population	1 Mile	2 Mile	3 Mile
2018 Total Population:	123,625	242,815	410,123
2023 Population:	129,738	252,043	419,912
Pop Growth 2018-2023:	4.94%	3.80%	2.39%
Average Age:	38.40	37.10	36.20
Households			
2018 Total Households:	77,071	139,836	223,021
HH Growth 2018-2023:	4.65%	3.75%	2.40%
Median Household Inc:	\$95,613	\$99,653	\$92,760
Avg Household Size:	1.50	1.60	1.70
2018 Avg HH Vehicles:	1.00	1.00	1.00
Housing			
Median Home Value:	\$438,331	\$414,796	\$414,151
Median Year Built:	1989	1985	1977

Businesses

Population	1 Mile	3 Mile	5 Mile
2018 Total Population:	123,625	410,123	828,478
2023 Population:	129,738	419,912	830,492
Pop Growth 2018-2023:	4.94%	2.39%	0.24%
Average Age:	38.40	36.20	35.60
Households			
2018 Total Households:	77,071	223,021	392,589
HH Growth 2018-2023:	4.65%	2.40%	0.48%
Median Household Inc:	\$95,613	\$92,760	\$73,886
Avg Household Size:	1.50	1.70	2.00
2018 Avg HH Vehicles:	1.00	1.00	1.00
Housing			
Median Home Value:	\$438,331	\$414,151	\$374,376
Median Year Built:	1989	1977	1961

Consumer Spending

Population	1 Mile	3 Mile	5 Mile
2018 Total Population:	123,625	410,123	828,478
2023 Population:	129,738	419,912	830,492
Pop Growth 2018-2023:	4.94%	2.39%	0.24%
Average Age:	38.40	36.20	35.60
Households			
2018 Total Households:	77,071	223,021	392,589
HH Growth 2018-2023:	4.65%	2.40%	0.48%
Median Household Inc:	\$95,613	\$92,760	\$73,886
Avg Household Size:	1.50	1.70	2.00
2018 Avg HH Vehicles:	1.00	1.00	1.00
Housing			
Median Home Value:	\$438,331	\$414,151	\$374,376
Median Year Built:	1989	1977	1961

Employment

Population	1 Mile	3 Mile	5 Mile
2018 Total Population:	123,625	410,123	828,478
2023 Population:	129,738	419,912	830,492
Pop Growth 2018-2023:	4.94%	2.39%	0.24%
Average Age:	38.40	36.20	35.60
Households			
2018 Total Households:	77,071	223,021	392,589
HH Growth 2018-2023:	4.65%	2.40%	0.48%
Median Household Inc:	\$95,613	\$92,760	\$73,886
Avg Household Size:	1.50	1.70	2.00
2018 Avg HH Vehicles:	1.00	1.00	1.00
Housing			
Median Home Value:	\$438,331	\$414,151	\$374,376
Median Year Built:	1989	1977	1961



730 N Wells Area Amenities

