

FOUNDRY
COMMERCIAL

NEW OWNERSHIP AND
PROPERTY MANAGEMENT

1707
ORLANDO
CENTRAL
PARKWAY



SUITE	RSF
150	4,979
175	946
150 – 175	5,925
480	3,329

1707 ORLANDO CENTRAL PARKWAY

OFFICE SPACE AVAILABLE

1707 Orlando Central Parkway is a five-story, 68,320 square foot office building located in South Orlando. Its convenient location offers prominent access points with plenty of dining and retail options. 1707 Orlando Central Parkway is under new management providing professional services and upkeep.

There is an abundance of parking in the surface lot with 5/1,000 SF.

PLEASE CONTACT:

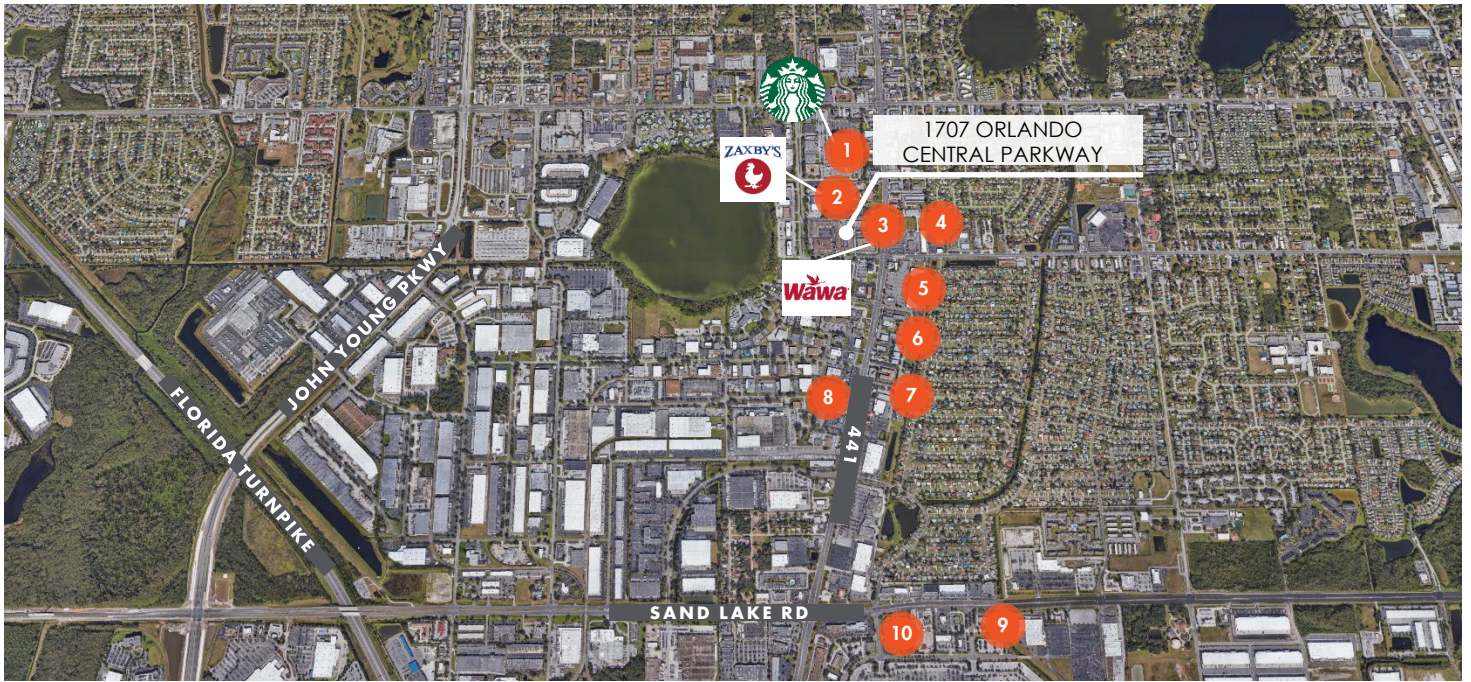
JENNIFER JONES **407.540.7741** | Jennifer.jones@foundrycommercial.com
 Licensed Real Estate Broker

JOHN PIETKIEWICZ **407.540.2793** | john.pietkiewicz@foundrycommercial.com
 Licensed Real Estate Broker



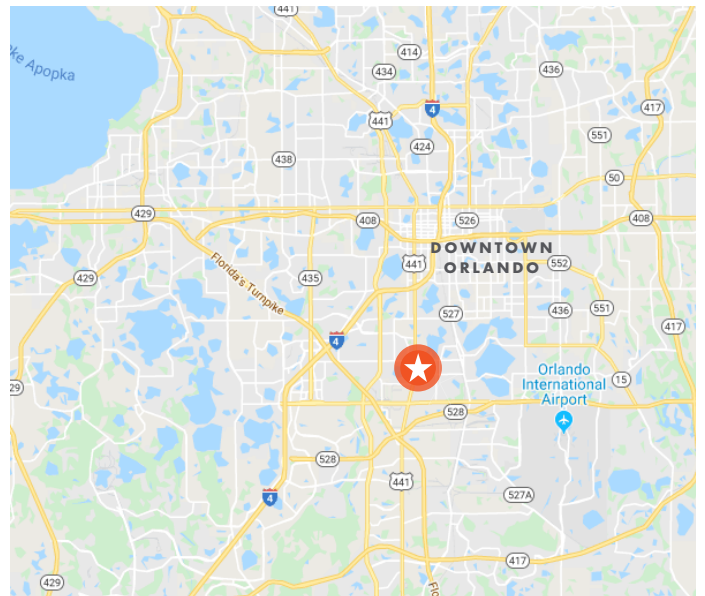
1707 ORLANDO CENTRAL PARKWAY

OFFICE SPACE AVAILABLE



DINING AND CONVENIENCE

1. Starbucks (within walking distance)
2. Zaxby's (within walking distance)
3. Wawa (within walking distance)
4. Wendy's
5. KFC
6. Sonny's BBQ
7. Publix
8. Home Depot
9. Target
10. Florida Mall



PLEASE CONTACT:

JENNIFER JONES **407.540.7741** | Jennifer.jones@foundrycommercial.com
Licensed Real Estate Broker

JOHN PIETKIEWICZ **407.540.2793** | john.pietkiewicz@foundrycommercial.com
Licensed Real Estate Broker



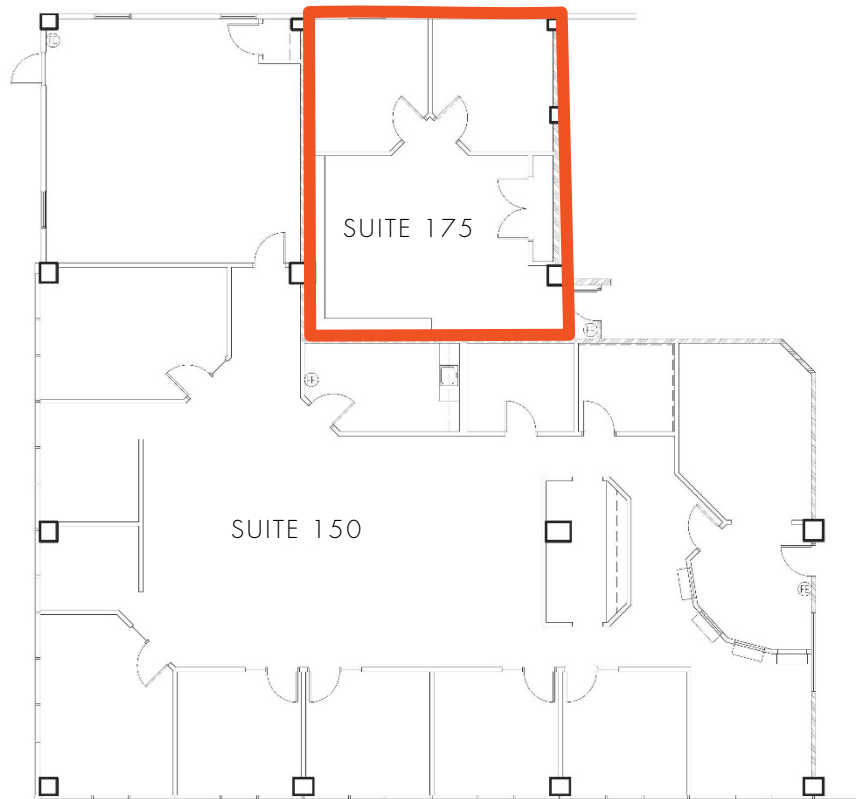
1707 ORLANDO CENTRAL PARKWAY

FIRST FLOOR

SUITE 150
4,979 SF AVAILABLE

SUITE 175
946 SF AVAILABLE

(SUITE 150 & 175 CAN BE COMBINED TO 5,925 SF)



PLEASE CONTACT:

JENNIFER JONES **407.540.7741** | Jennifer.jones@foundrycommercial.com
Licensed Real Estate Broker

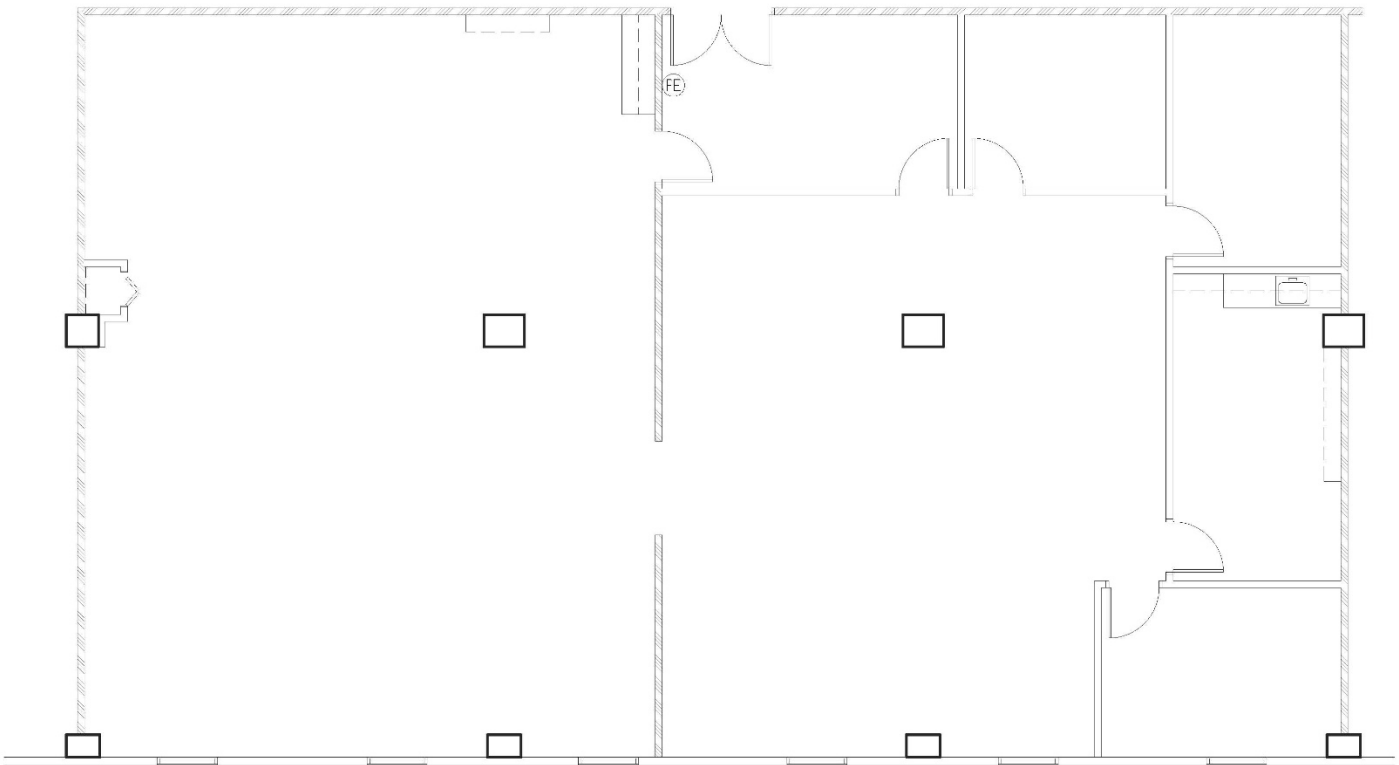
JOHN PIETKIEWICZ **407.540.2793** | john.pietkiewicz@foundrycommercial.com
Licensed Real Estate Broker



1707 ORLANDO CENTRAL PARKWAY

FOURTH FLOOR

SUITE 480
3,329 SF AVAILABLE



PLEASE CONTACT:

JENNIFER JONES **407.540.7741** | Jennifer.jones@foundrycommercial.com
Licensed Real Estate Broker

JOHN PIETKIEWICZ **407.540.2793** | john.pietkiewicz@foundrycommercial.com
Licensed Real Estate Broker

