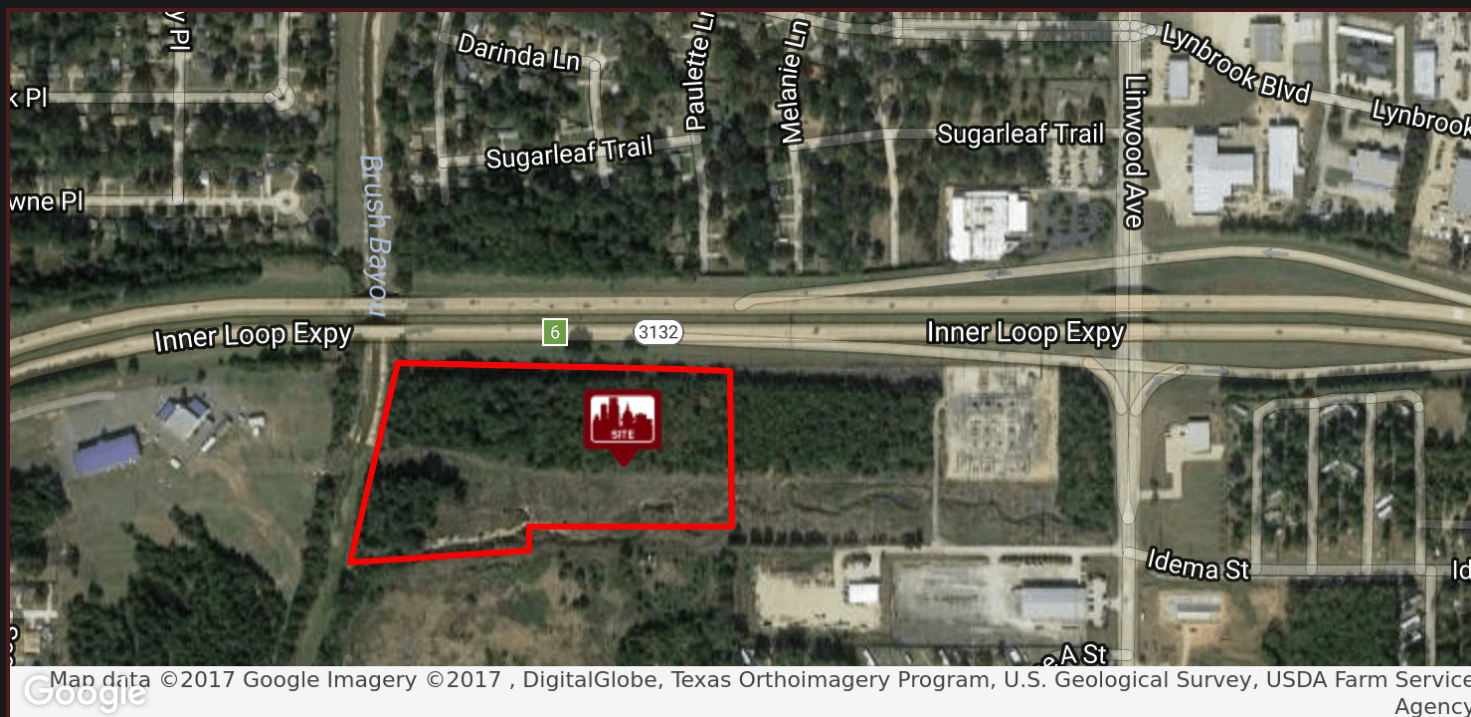


FOR SALE

HWY 3132 DEVELOPMENT LAND

IDEMA ST., SHREVEPORT, LA 71106



PROPERTY HIGHLIGHTS

- 15.19 Acres on Idema Street, just off Linwood Avenue
- Over 1,000' of frontage along Highway 3132 (Inner Loop Expressway)
- Prime commercial site, located in a strong industrial area
- Currently zoned R-1D, though adjacent to industrial zoned tracts
- Approximately 1 mile from I-49
- Approximately 7 miles from I-20 via Highway 3132
- Sale Price: \$1,500,000



For More Information, Contact:

Trent Siskron
O: 318.212.1628

tsiskron@vintagerealty.com

Brad Armstrong | Associate Broker
O: 318.212.1649
C: 318.560.2111

barmstong@vintagerealty.com

Kendall Demouchet
O: 318.212.1648
C: 337.412.3388

kdemouchet@vintagerealty.com

All Information Contained Herein Is Believed To Be Accurate, But Is Not Warranted And No Liability Of Errors Or Omissions Is Assured By Either The Property Owner Or Vintage Realty Company Or Its Agents And Employees. Prices As Stated Herein And Product Availability Is Subject To Change And/Or Sale Or Lease Without Prior Notice, And All Sizes And Dimensions Are Subject To Correction. Rev 05/2017



FOR SALE

HWY 3132 DEVELOPMENT LAND

IDEMA ST., SHREVEPORT, LA 71106



For More Information, Contact:

Trent Siskron
O: 318.212.1628

tsiskron@vintagerealty.com

Brad Armstrong | Associate Broker
O: 318.212.1649
C: 318.560.2111

barmstong@vintagerealty.com

Kendall Demouchet
O: 318.212.1648
C: 337.412.3388

kdemouchet@vintagerealty.com

All Information Contained Herein Is Believed To Be Accurate, But Is Not Warranted And No Liability Of Errors Or Omissions Is Assured By Either The Property Owner Or Vintage Realty Company Or Its Agents And Employees. Prices As Stated Herein And Product Availability Is Subject To Change And/Or Sale Or Lease Without Prior Notice, And All Sizes And Dimensions Are Subject To Correction.
Rev 05/2017

