

6425 E. HILDALE ROAD
DETROIT, MICHIGAN

INDUSTRIAL FOR SALE OR LEASE
14,000 Square Feet Available



**SIGNATURE
ASSOCIATES**
KNOW SIGNATURE | KNOW RESULTS

AVAILABLE IMMEDIATELY



PROPERTY FEATURES

- 14,000 square feet available
- 16' clear height
- (1) 12x14 grade level door
- Zoned M-4
- Fenced yard
- 2,100 amps, 220 volts, 3 phase power
- Part 2-story office
- New roof
- Lease Rate: \$4,650.00/month NNN
- Sale Price: \$425,000



For more information, please contact:

CHRIS MONSOUR
(248) 948 0107
cmonsour@signatureassociates.com

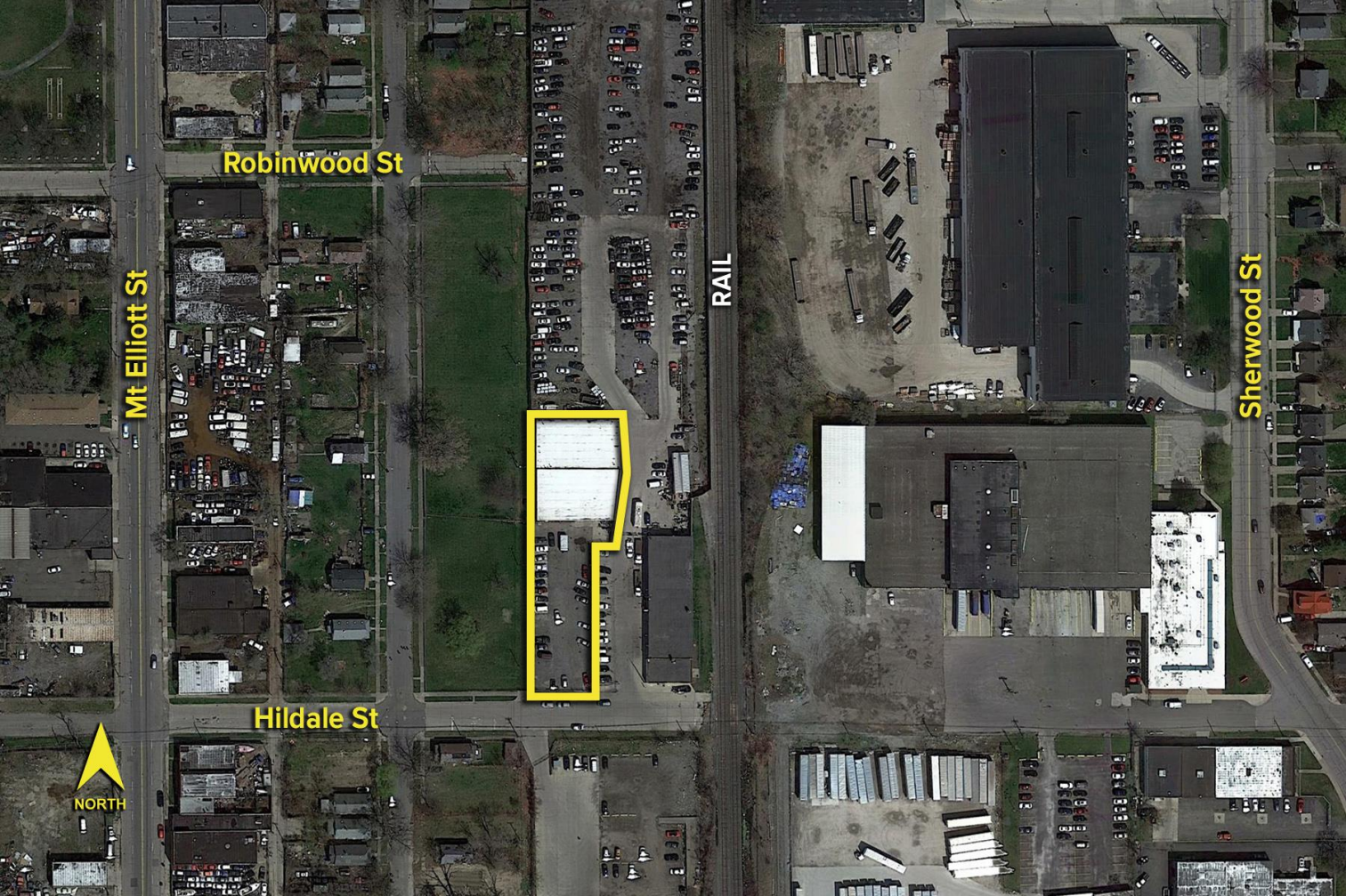
SIGNATURE ASSOCIATES
One Towne Square, Suite 1200
Southfield, MI 48076
www.signatureassociates.com

6425 E. Hildale Road – Detroit, Michigan

Industrial For Sale or Lease

14,000
Square Feet
AVAILABLE

Aerial



For more information, please contact:
CHRIS MONSOUR
(248) 948 0107
cmonsour@signatureassociates.com

SIGNATURE ASSOCIATES
One Towne Square, Suite 1200
Southfield, MI 48076
www.signatureassociates.com

Information is subject to verification and no liability for errors or omissions is assumed. Price is subject to change and listing withdrawal.