

1050 East 222nd Street - St. Clair Avenue

Showroom/Warehouse Space For Sale/For Lease

Euclid, Ohio 44117 (Cuyahoga County)



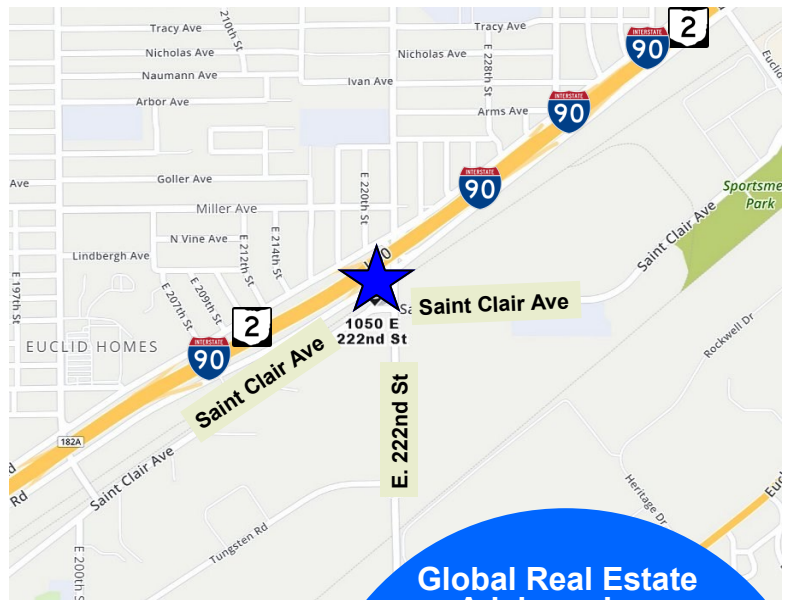
1050 East 222nd Street, Euclid, OH 44117

Property Features:

- 3,468± SF Total of Showroom/Warehouse Space
- .39± Acres Corner Lot
- Roof was Replaced in 2018
- One Drive-In Door 10' x 10'
- T-8 Lighting
- Floor Drains
- Alarm System
- Fenced-In Yard Approximately 60'x80'
- Zoned General Industrial and Manufacturing
- Great Exposure on E. 222 St. & St. Clair Avenue
- Across the Street from Lincoln Electric
- Close Proximity to SR 2 and Interstate 90

Sale Priced at \$275,000.00

Lease Rate of \$2,300 monthly NNN



Global Real Estate
Advisors Inc.

Tim Sawicki

440-255-5552 x 222

440-283-5143 Cell

Tim@GlobalCommercialRE.com

Neil Sawicki, SIOR, Broker

440-255-5552 x 221

Neil@GlobalCommercialRE.com



GLOBAL

www.GlobalCommercialRE.com

8585 East Ave., Mentor, Ohio 44060

Real Estate Advisors Inc.
BROKER

This information has been secured from sources we believe are reliable, but we make no representations or warranties, expressed or implied, as to the accuracy of the information. References to condition, square footage or age are approximate. Buyer or Tenant acknowledges that they are relying on their own investigations and are not relying on Broker provided information. Procuring broker shall only be entitled to a commission, calculated in accordance with the rates approved by our principal only if such procuring broker executes a brokerage agreement acceptable to us and our principal and the conditions as set forth in the brokerage agreement are fully and unconditionally satisfied. Although all information furnished regarding property for sale, rental, or financing is from sources deemed reliable, such information has not been verified and no express representation is made nor is any to be implied as to the accuracy thereof and it is submitted subject to errors, omissions, change of price, rental or other conditions, prior sale, lease or financing, or withdrawal without notice and to any special conditions imposed by our principal.

1050 East 222nd Street / St. Clair Avenue

Showroom/Warehouse Space For Sale/For Lease

Euclid, Ohio 44117 (Cuyahoga County)



www.GlobalCommercialRE.com
8585 East Ave., Mentor, Ohio 44060

Real Estate Advisors Inc.
BROKER

Global Real Estate
Advisors Inc.

Tim Sawicki

440-255-5552 x 222

440-283-5143 Cell

Tim@GlobalCommercialRE.com

Neil Sawicki, SIOR, Broker

440-255-5552 x 221

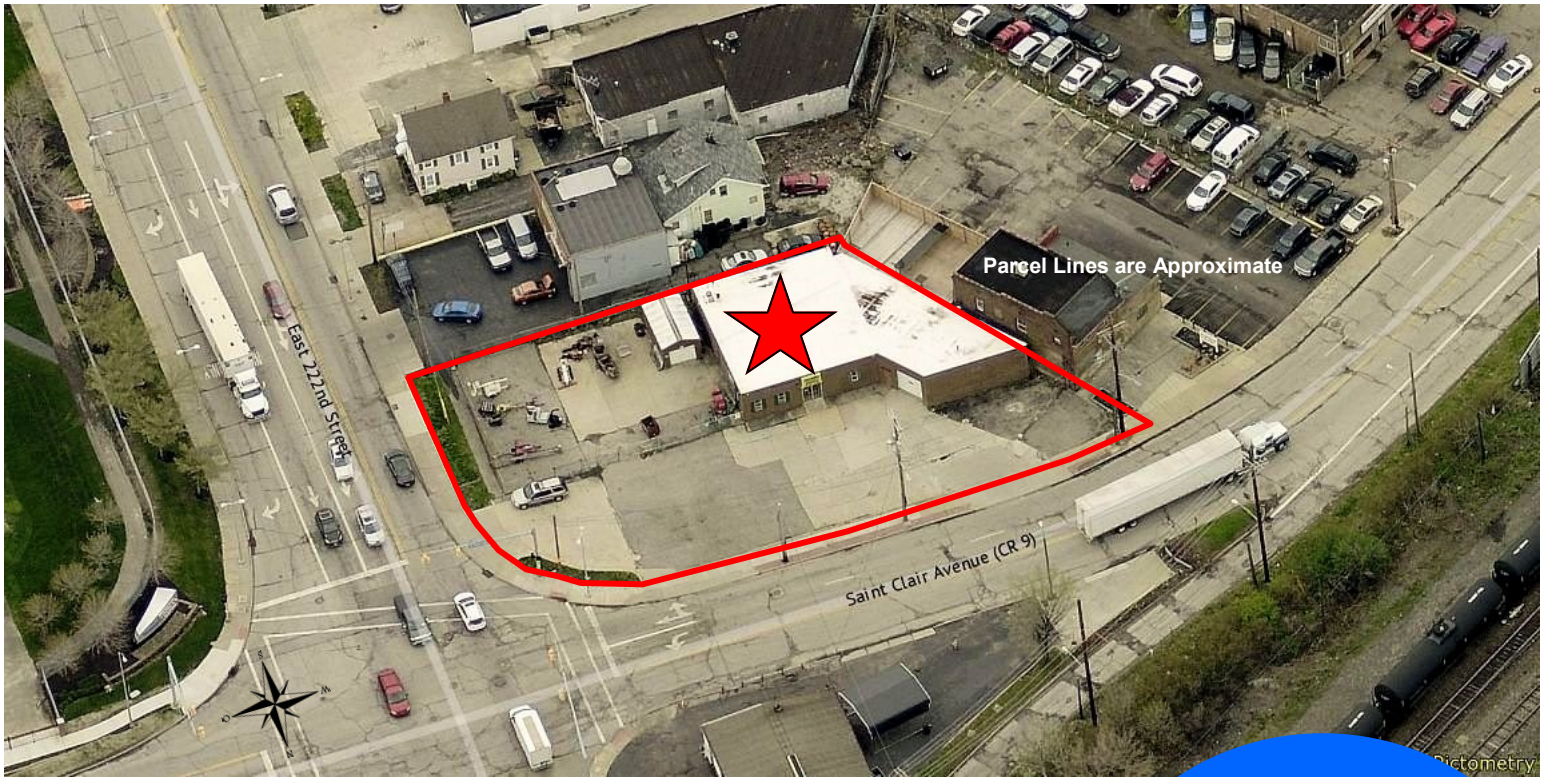
Neil@GlobalCommercialRE.com

This information has been secured from sources we believe are reliable, but we make no representations or warranties, expressed or implied, as to the accuracy of the information. References to condition, square footage or age are approximate. Buyer or Tenant acknowledges that they are relying on their own investigations and are not relying on Broker provided information. Procuring broker shall only be entitled to a commission, calculated in accordance with the rates approved by our principal only if such procuring broker executes a brokerage agreement acceptable to us and our principal and the conditions as set forth in the brokerage agreement are fully and unconditionally satisfied. Although all information furnished regarding property for sale, rental, or financing is from sources deemed reliable, such information has not been verified and no express representation is made nor is any to be implied as to the accuracy thereof and it is submitted subject to errors, omissions, change of price, rental or other conditions, prior sale, lease or financing, or withdrawal without notice and to any special conditions imposed by our principal.

1050 East 222nd Street / St. Clair Avenue

Showroom/Warehouse Space For Sale/For Lease

Euclid, Ohio 44117 (Cuyahoga County)



www.GlobalCommercialRE.com
8585 East Ave., Mentor, Ohio 44060

Real Estate Advisors Inc.
BROKER

**Global Real Estate
Advisors Inc.**

Tim Sawicki

440-255-5552 x 222

440-283-5143 Cell

Tim@GlobalCommercialRE.com

Neil Sawicki, SIOR, Broker

440-255-5552 x 221

Neil@GlobalCommercialRE.com

This information has been secured from sources we believe are reliable, but we make no representations or warranties, expressed or implied, as to the accuracy of the information. References to condition, square footage or age are approximate. Buyer or Tenant acknowledges that they are relying on their own investigations and are not relying on Broker provided information. Procuring broker shall only be entitled to a commission, calculated in accordance with the rates approved by our principal only if such procuring broker executes a brokerage agreement acceptable to us and our principal and the conditions as set forth in the brokerage agreement are fully and unconditionally satisfied. Although all information furnished regarding property for sale, rental, or financing is from sources deemed reliable, such information has not been verified and no express representation is made nor is any to be implied as to the accuracy thereof and it is submitted subject to errors, omissions, change of price, rental or other conditions, prior sale, lease or financing, or withdrawal without notice and to any special conditions imposed by our principal.