

801 BLANCHARD



NEWMARK

CAVAN O'KEEFE
206.395.2903
cavan.okeefe@nrmk.com

JESSE OTTELE
206.452.4529
jesse.ottele@nrmk.com

801 BLANCHARD



PROPERTY HIGHLIGHTS

- Iconic brick and timber building redeveloped by Sugar Mountain in association with Mallet Design Build
- Constructed in 2015, the 1925 building was fully rebuilt with an eye on keeping its automotive heritage and focusing on its unique floor plates and iconic design
- Large perimeter windows promoting unparalleled natural light and views up and down Westlake
- Recently built Airy open office concept allows plug & play ability for most tenants
- High ceilings with exposed sand blasted wood beams, original brick, and steel structural components create a perfect blend of modern design and rustic industrial elements
- Anchored by the award winning Butcher's Table and surrounded by retail and amenities



NEWMARK

CAVAN O'KEEFE
206.395.2903
cavan.okeefe@nrmk.com

JESSE OTTELE
206.452.4529
jesse.ottele@nrmk.com

801 BLANCHARD

AVAILABILITY HIGHLIGHTS

- Smaller floorplates allow companies to own their space
- Efficient floorplates, small lobby focused on tenant space
- Large perimeter windows
- Excellent natural light
- Airy office buildout with open floor concept
- A perfect blend of modern design with rustic and industrial elements
- High ceilings with exposed sand blasted wood beams, original brick, and steel structural components



NEWMARK

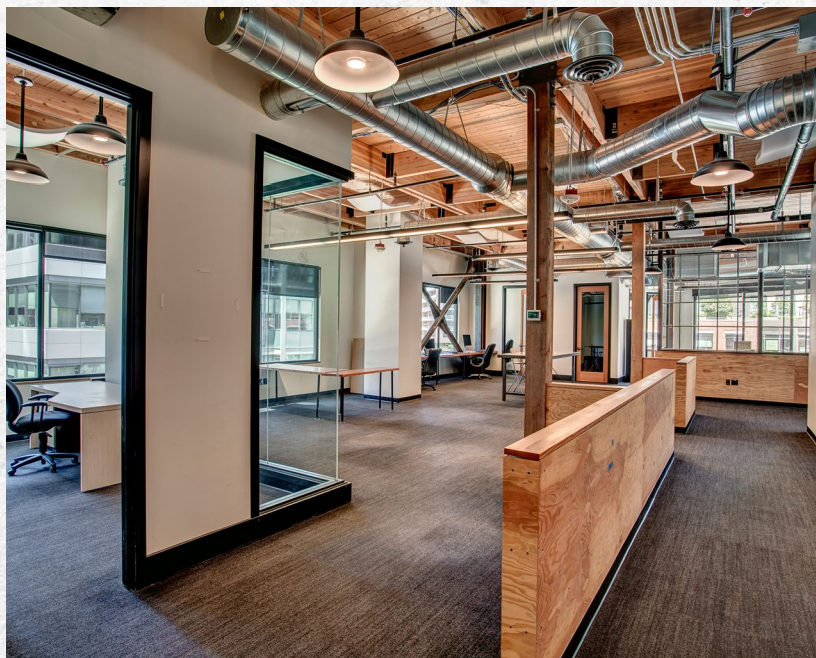
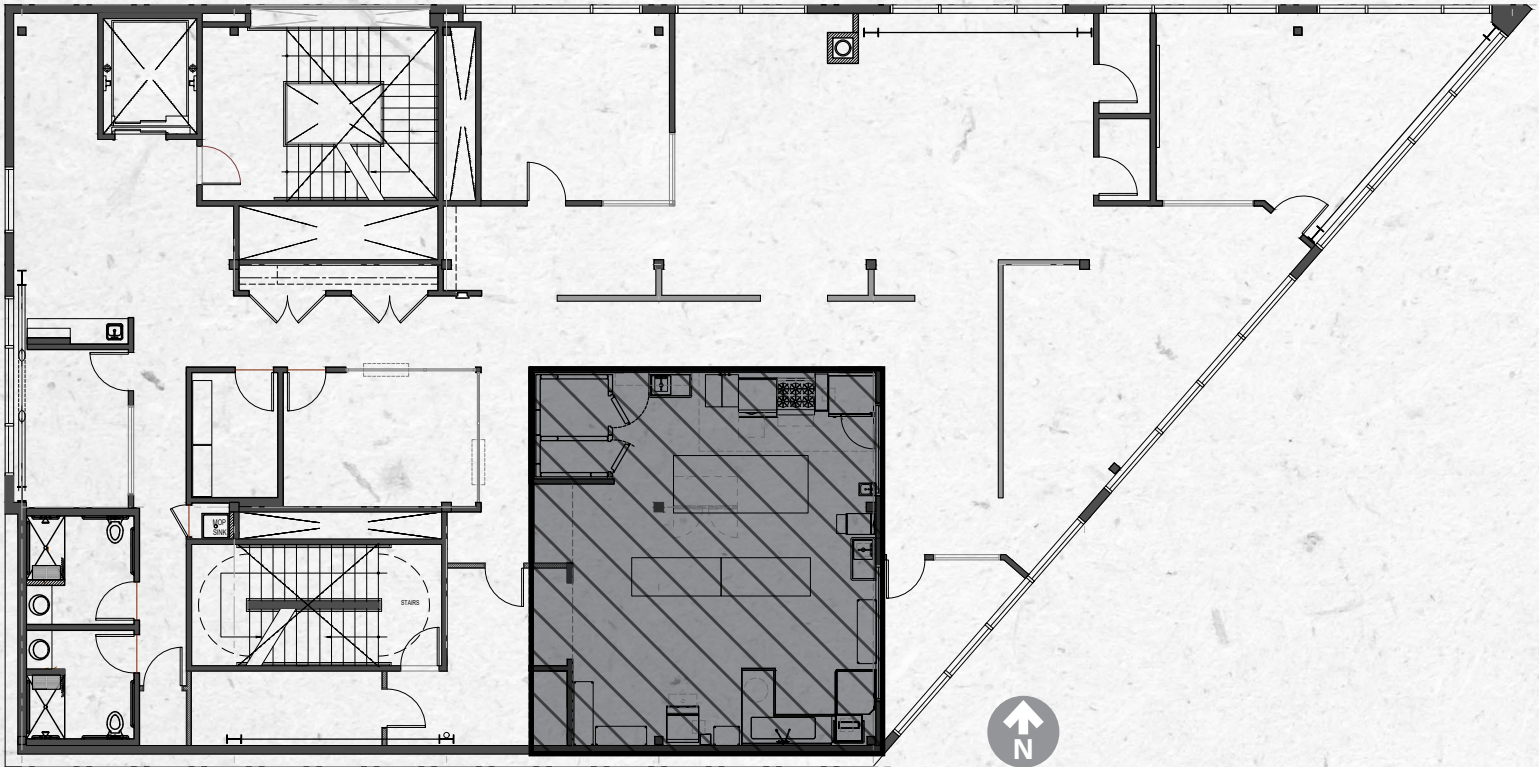
CAVAN O'KEEFE
206.395.2903
cavan.okeefe@nrmk.com

JESSE OTTELE
206.452.4529
jesse.ottele@nrmk.com

801 BLANCHARD

FLOOR 4

3,565 RSF | Available Now



NEWMARK

CAVAN O'KEEFE
206.395.2903
cavan.okeefe@nrmk.com

JESSE OTTELE
206.452.4529
jesse.ottele@nrmk.com

801 BLANCHARD

WALK SCORE
100

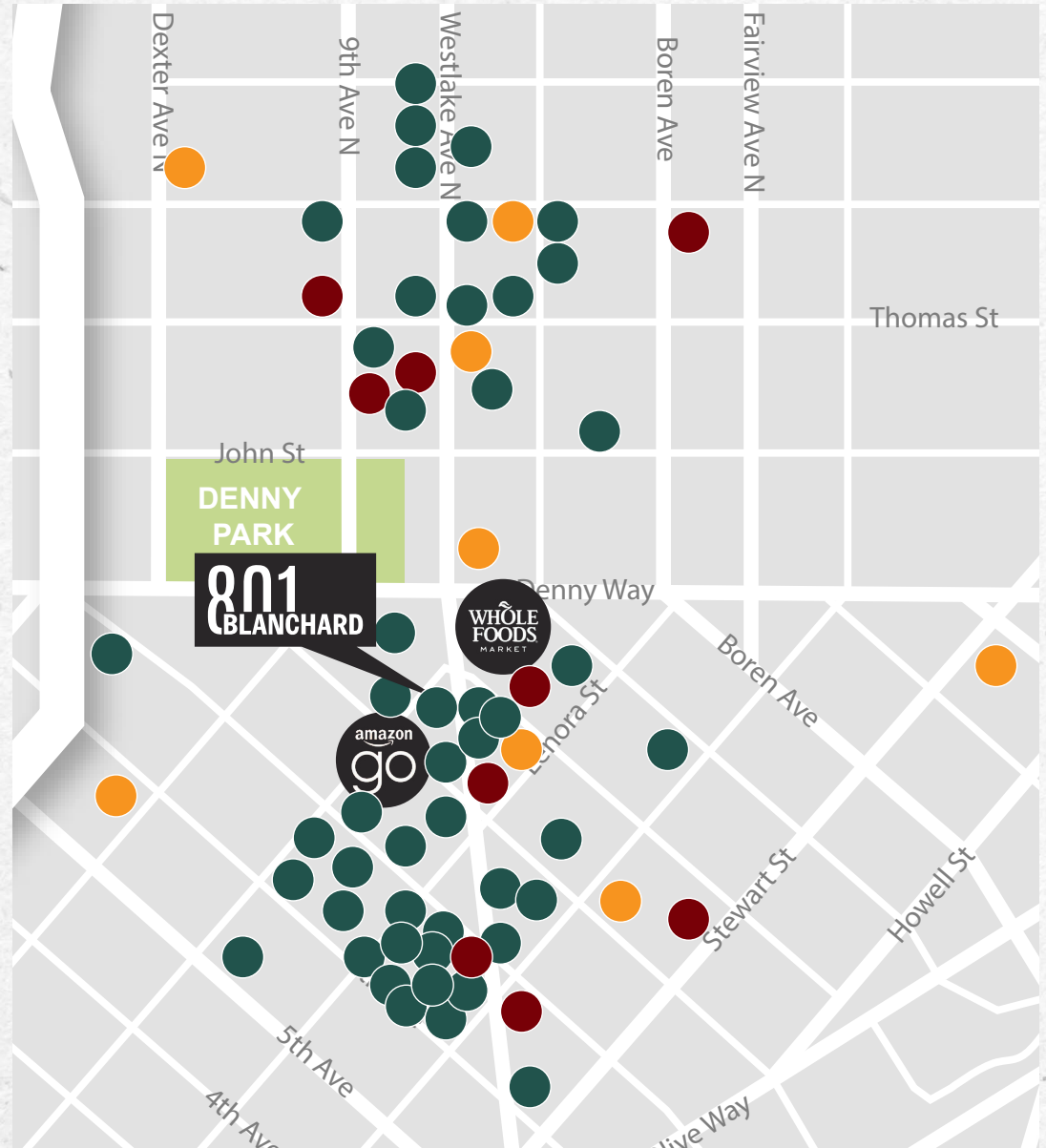
TRANSIT SCORE
100

BIKE SCORE
80

SURROUNDING AMENITIES

FOOD

Vinason Pho & Grill
The Butcher's Table
Petra Café
Wild Ginger Mackenzie
Tutta Bella Pizzeria
Einstein Brothers Bagels
Shake Shack
Caravan Crepes
Joe & the Juice
Ma'ono Fried Chicken
Casco Antiquo SLU
Great State Burger
Kiki Ramen
Café Suisse
Metropolitan Deli + Café
Urban Sushi Kitchen
Barolo Ristorante
Marination
Poke Alice 2
Potbelly Sandwich Shop
Mamnoon Street
Evergreen Salad
Skillet Regrade
Anar
Willmott's Ghost
2120
Lady Yum
5 Point Café
Chipotle
Jack's BBQ
On the Fly
Flying Fish
Hurry Curry of Tokyo
Jimmy John's
Portage Bay
Serious Pie & Biscuit
Kakao



Re:public
Berliner Doner Kebab
Top Pot Doughnuts
Yumbit
Thai Thani Kitchen
Brave Horse Tavern
Cuoco

COFFEE
Starbucks Reserve
Monorail Espresso
WFM Coffee & Juice Bar
Starbucks
Elm Coffee Roasters
Evoke Espresso
Café An'Clair
Dilettante Mocha Café
Zoka Coffee

FITNESS
Barry's Boot Camp
Flywheel Sports
Soul Cycle
Flow Fitness
Orange Theory
Pandora Fitness
24-Hour Fitness
Flow Life Fitness

NEWMARK

CAVAN O'KEEFE
206.395.2903
cavan.okeefe@nmrk.com

JESSE OTTELE
206.452.4529
jesse.ottele@nmrk.com



801 BLANCHARD

NEWMARK

JESSE OTTELE
206.452.4529
jesse.ottele@nrmk.com

CAVAN O'KEEFE
206.395.2903
cavan.okeefe@nrmk.com

The distributor of this communication is performing acts for which a real estate license is required. The information contained herein has been obtained from sources deemed reliable but has not been verified and no guarantee, warranty or representation, either express or implied, is made with respect to such information. Terms of sale or lease and availability are subject to change or withdrawal without notice. 18-1023