



**CBRE**

**CLASS "A" OFFICE BUILDING**



IN THE HEART OF  
**PARADISE VALLEY**



**PARADISE VILLAGE**  
OFFICE PARK

11811 NORTH TATUM BOULEVARD



# PROPERTY FEATURES

Five-story, ±268,598 rentable square feet

Newly renovated atrium and corridors

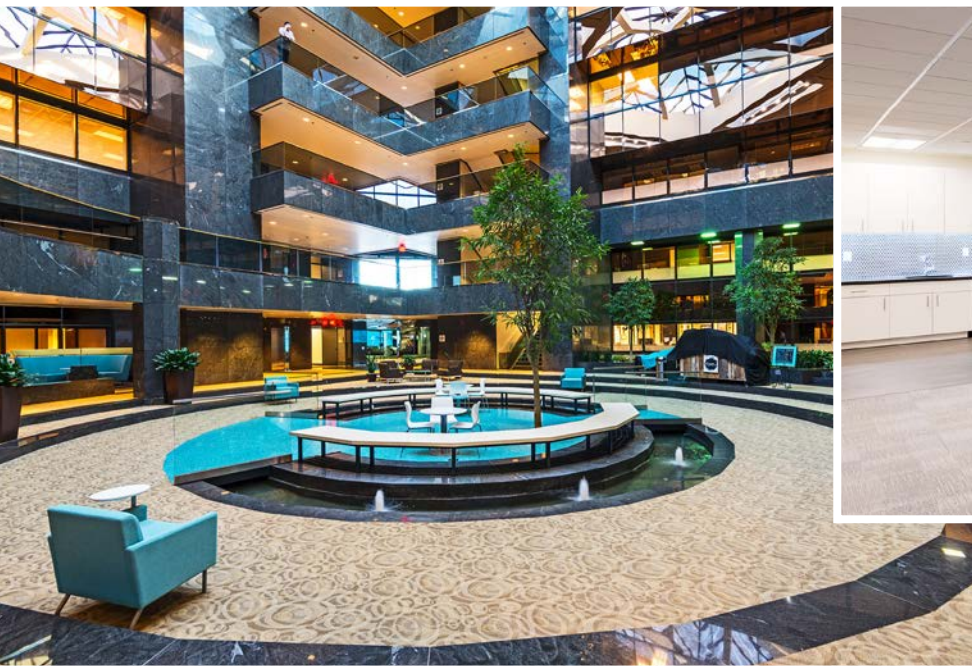
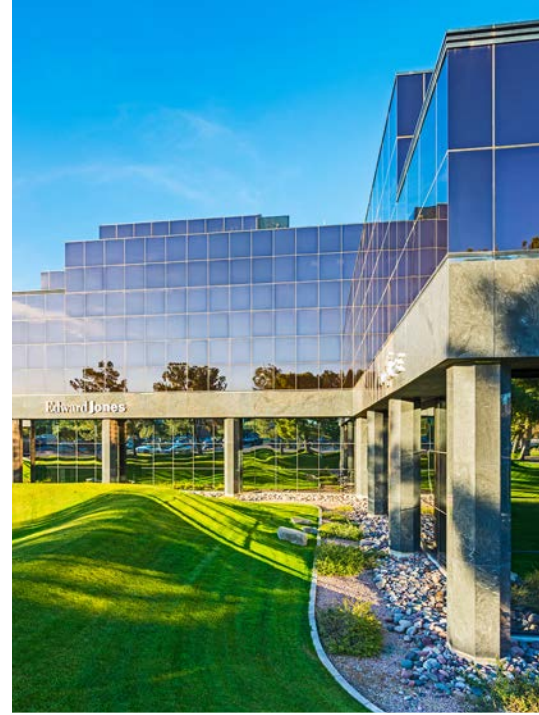
Variety of new modern spec suites

New tenant lounge, conference center and training room

5:1,000 Parking

Secured covered parking garage and convenient visitor parking available

Professional on-site management



# LOCATION FEATURES

Located adjacent to Paradise Valley Mall and numerous other retail centers offering a wide variety of shops and restaurants

## NEARBY RESTAURANTS INCLUDE

Z'Tejas, Picazzo's, Shogun, In-N-Out, Outback, Salty Sow, Original ChopShop, Einstein's, Oregano's, Chipotle, Cold Beers and Cheeseburgers, OHSO Brewery & Distillery, The Covenant and many others

## LOCATED WITHIN 2.5 MILES

of the SR-51 freeway and  $\pm 5$  miles of the Loop 101/Cactus Road interchange

## LOCATED WITHIN 15 MINUTES

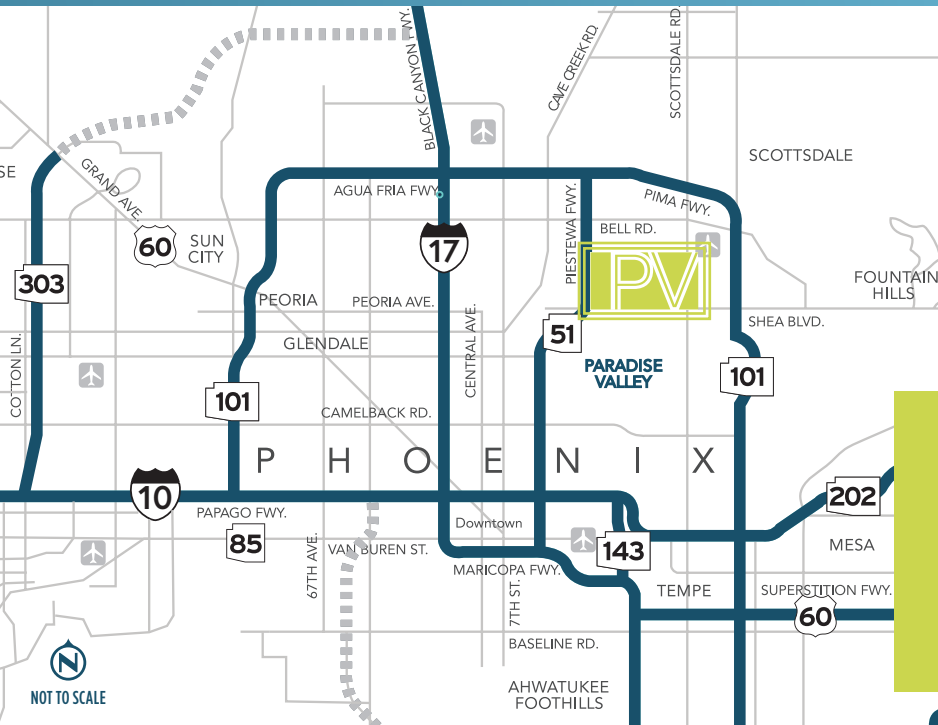
of Sky Harbor International Airport

## ADJACENT TO

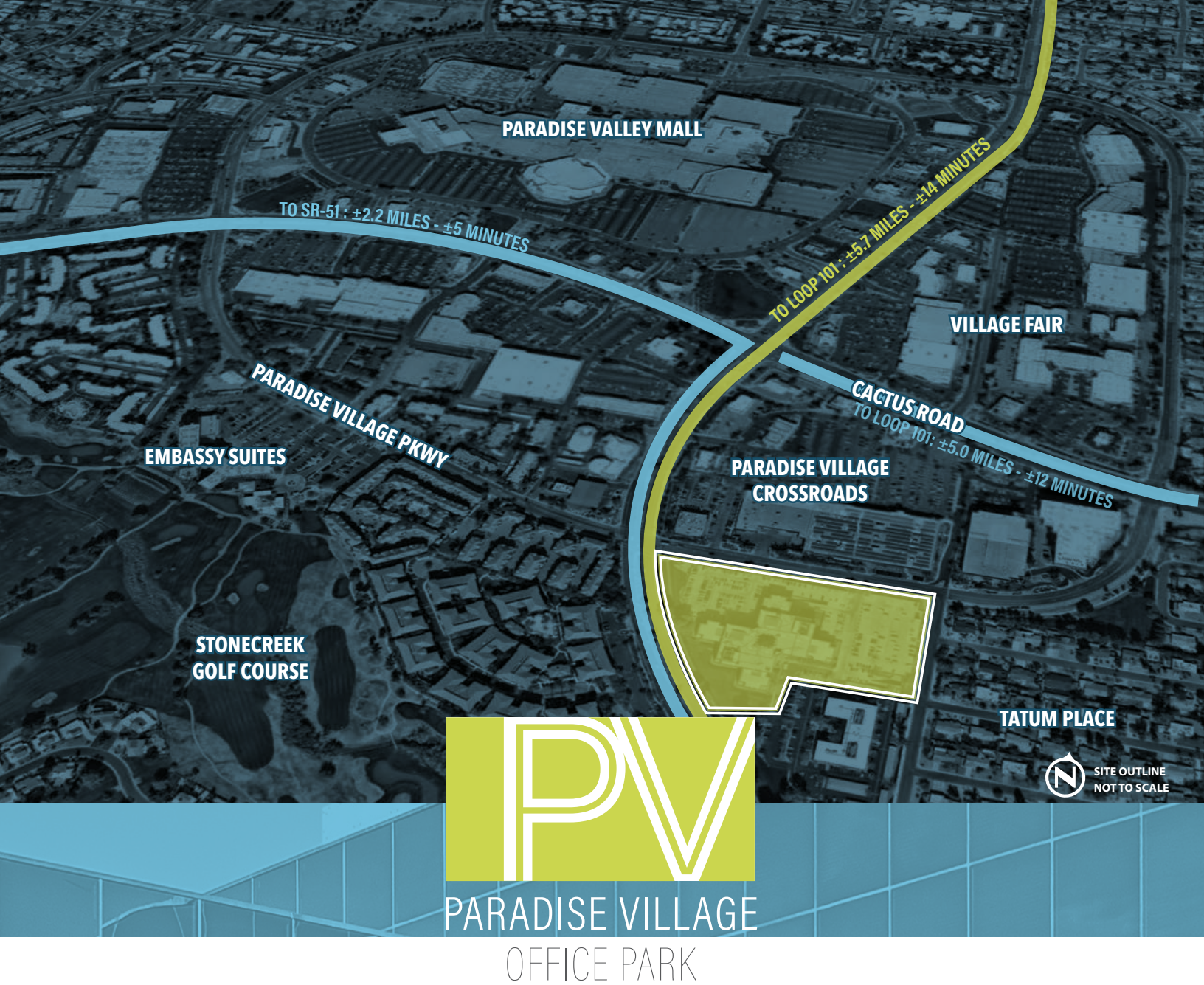
170-room Embassy Suites - Paradise Valley Hotel

## WALKABLE AMENITIES

in adjacent retail centers







## PARADISE VILLAGE OFFICE PARK

### FOR MORE INFORMATION, PLEASE CONTACT

**SEAN SPELLMAN**

+1 602 735 5615  
sean.spellman@cbre.com

**COREY HAWLEY**

+1 602 735 1742  
corey.hawley@cbre.com

**JIMMY CORNISH**

+1 602 735 1741  
jimmy.cornish@cbre.com

**NICOLE LEMON**

+1 602 735 5605  
nicole.lemon@cbre.com



© 2019 CBRE, Inc. All rights reserved. This information has been obtained from sources believed reliable, but has not been verified for accuracy or completeness. You should conduct a careful, independent investigation of the property and verify all information. Any reliance on this information is solely at your own risk. CBRE and the CBRE logo are service marks of CBRE, Inc. All other marks displayed on this document are the property of their respective owners. Photos herein are the property of their respective owners. Use of these images without the express written consent of the owner is prohibited. PMStudio\_May2019