

MT. JULIET

RESIDENTIAL DEVELOPMENT OPPORTUNITY

± 18 ACRES

ADDRESS 895 PLEASANT GROVE ROAD
MT. JULIET, TN 37122

SUB-MARKET MT. JULIET

USE RESIDENTIAL

SIZE 18 ACRES

ZONED RS20 & RS40

LIST PRICE \$ 780,000

ADDITIONAL NOTES

All Utilities Available

Potential for a 30-Lot Subdivision (See Enclosed Conceptual Site Plan)

LOCATION NOTES

Less than 30 Minutes to Downtown Nashville

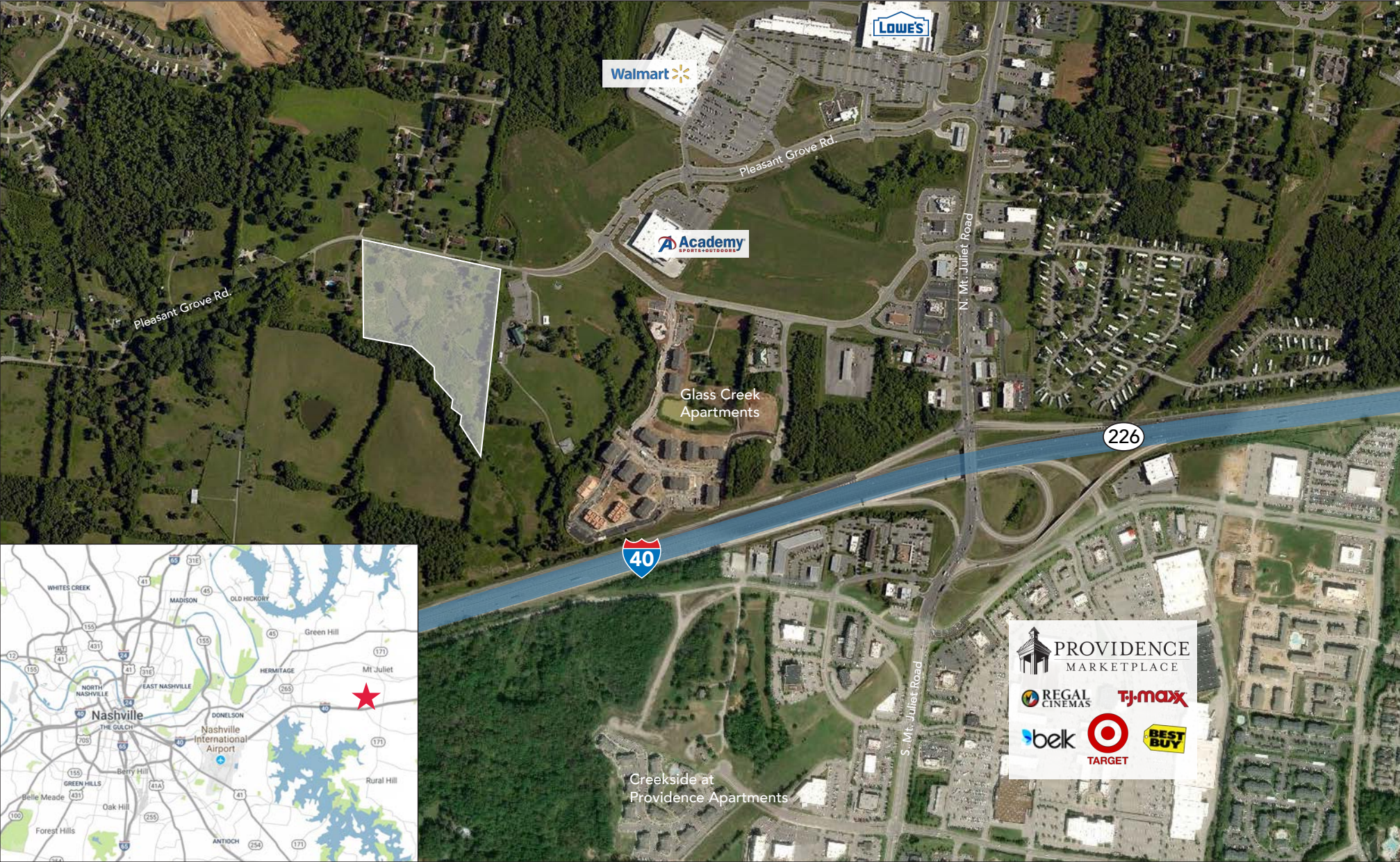
Less than 1.5 Miles to Access I-40 via Exit 226

Ideally Situated Adjacent to the Rapidly-Growing Mt. Juliet Road Corridor

CONCEPTUAL SITE PLAN



IMMEDIATE AREA



FOR MORE INFORMATION, CONTACT

LEE WHITE

615.250.8673

lwhite@southeastventure.com

AXSON WEST

615.250.8670

awest@southeastventure.com