

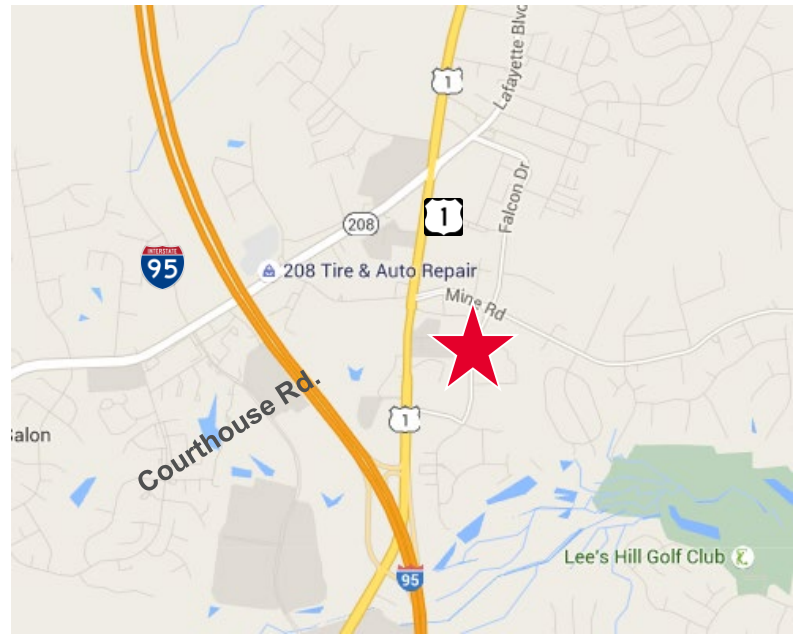


Property Features

- 1,254 SF built-out private office suite
- 1,068 SF built-out open office suite
- Ample parking
- Façade & monument signage available
- Situated in Four-Mile-Fork region of Route 1
- Accessible to I-95
- Both shopping and dining are readily available

Specifications

Available SF	Suite 4601 – 1,068 – 2,322 SF Suite 4611 – 1,254 – 2,322 SF Suite 4815 – 2,950 SF
Lease Rate	Suites 4061 & 4611: \$19.00 PSF Full Service Suite 4815; \$15.00 PSF + utilities
Timing	Available immediately



For more information, contact:

JAMIE SCULLY, CCIM
First Vice President
540 322 4140
jamie.scully@thalhimer.com

SHARON SCHMIDT
Senior Associate
540 322 4155
sharon.schmidt@thalhimer.com

CHRIS RUSSOTTI
Associate
540 322 4153
chris.russotti@thalhimer.com

Eagle Village
1125 Jefferson Davis Highway, Suite 350
Fredericksburg, VA 22401
www.thalhimer.com

1,254 SF Suite 4611

1,068 SF Suite 4601

Leased

Leased

For more information, contact:

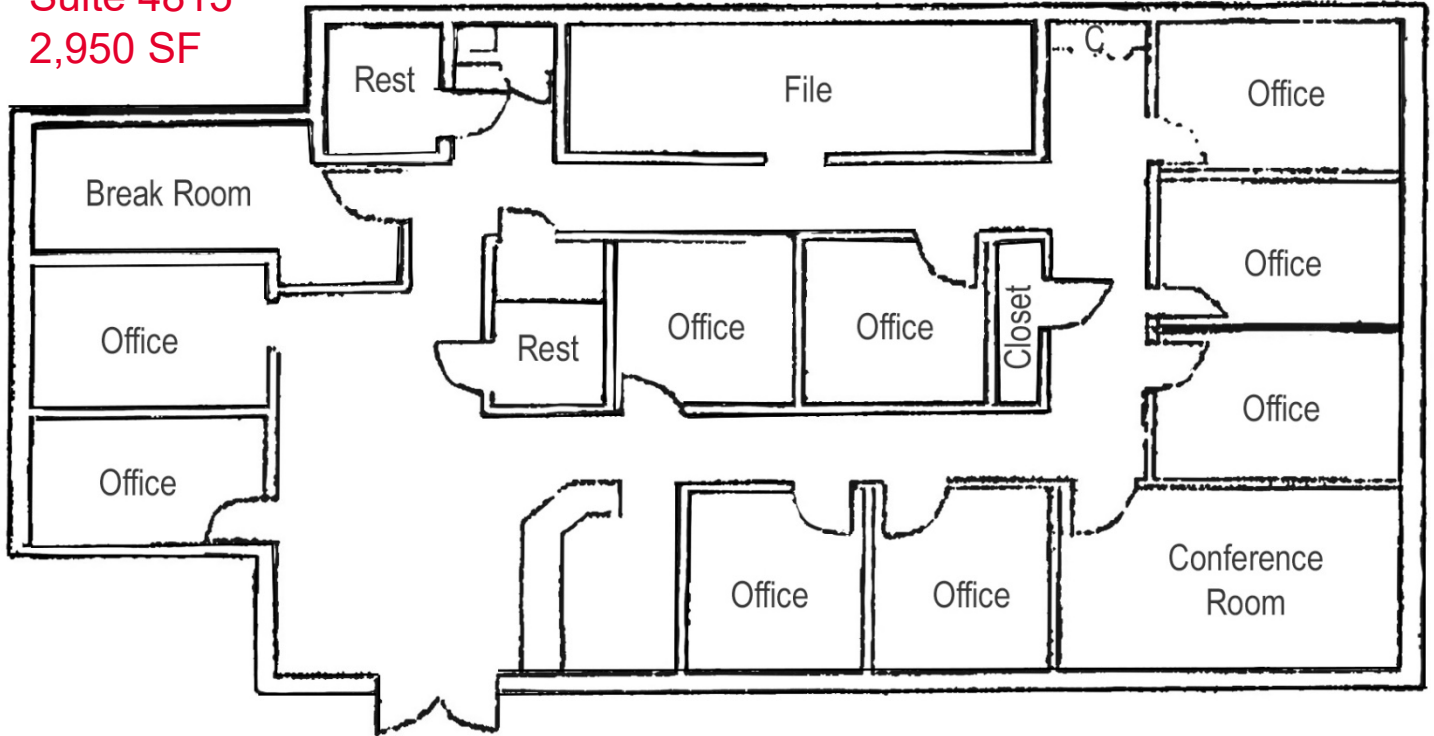
JAMIE SCULLY, CCIM
 First Vice President
 540 322 4140
jamie.scully@thalhimer.com

SHARON SCHMIDT
 Senior Associate
 540 322 4155
sharon.schmidt@thalhimer.com

CHRIS RUSSOTTI
 Associate
 540 322 4153
chris.russotti@thalhimer.com

Eagle Village
 1125 Jefferson Davis Highway, Suite 350
 Fredericksburg, VA 22401
www.thalhimer.com

Suite 4815
2,950 SF



For more information, contact:

JAMIE SCULLY, CCIM
First Vice President
540 322 4140
jamie.scully@thalhimer.com

SHARON SCHMIDT
Senior Associate
540 322 4155
sharon.schmidt@thalhimer.com

CHRIS RUSSOTTI
Associate
540 322 4153
chris.russotti@thalhimer.com

Eagle Village
1125 Jefferson Davis Highway, Suite 350
Fredericksburg, VA 22401
www.thalhimer.com