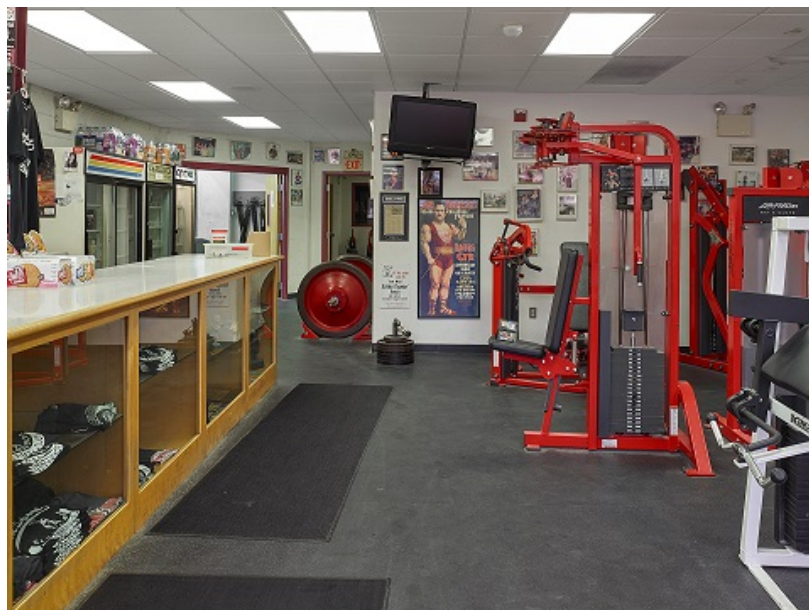
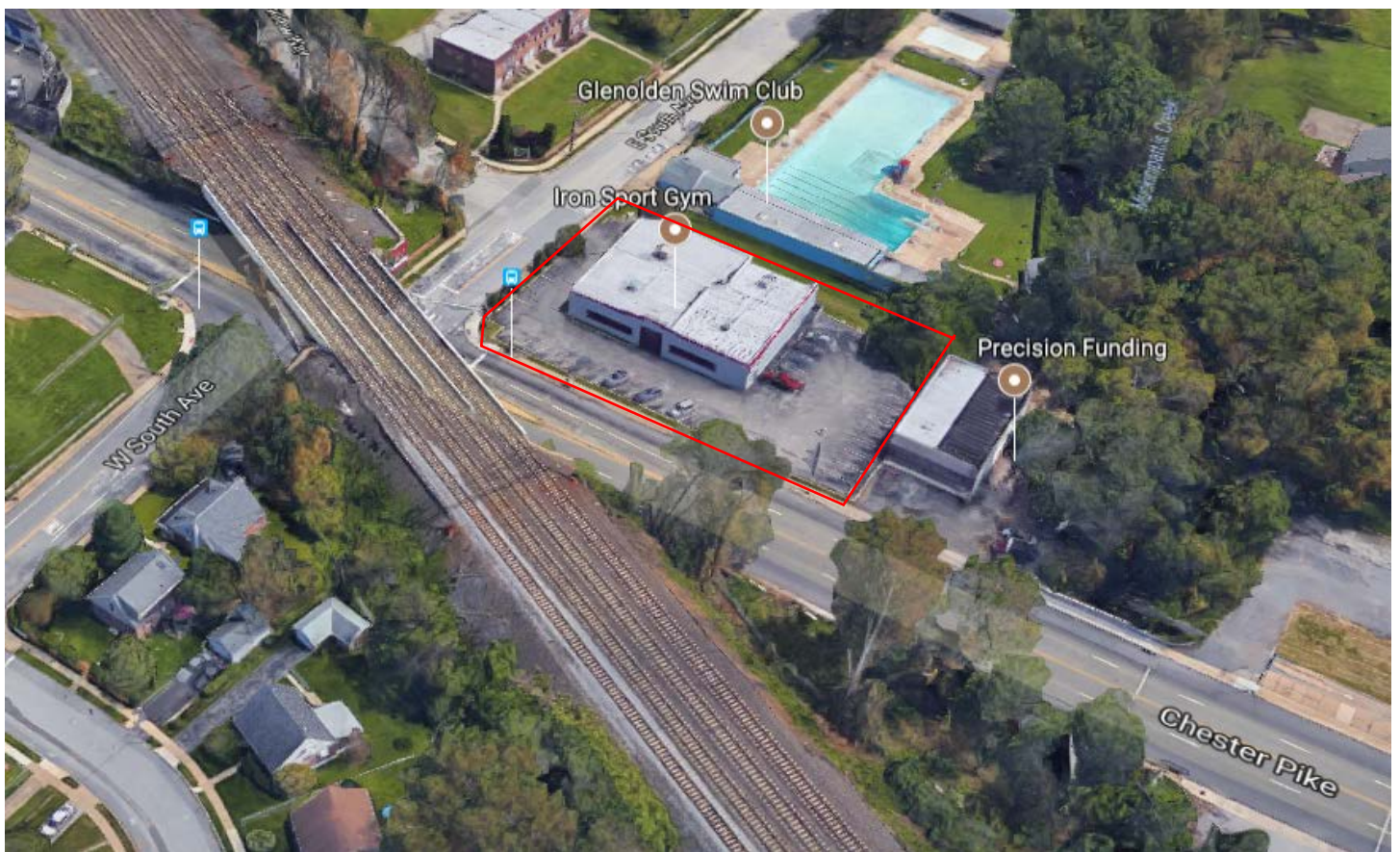
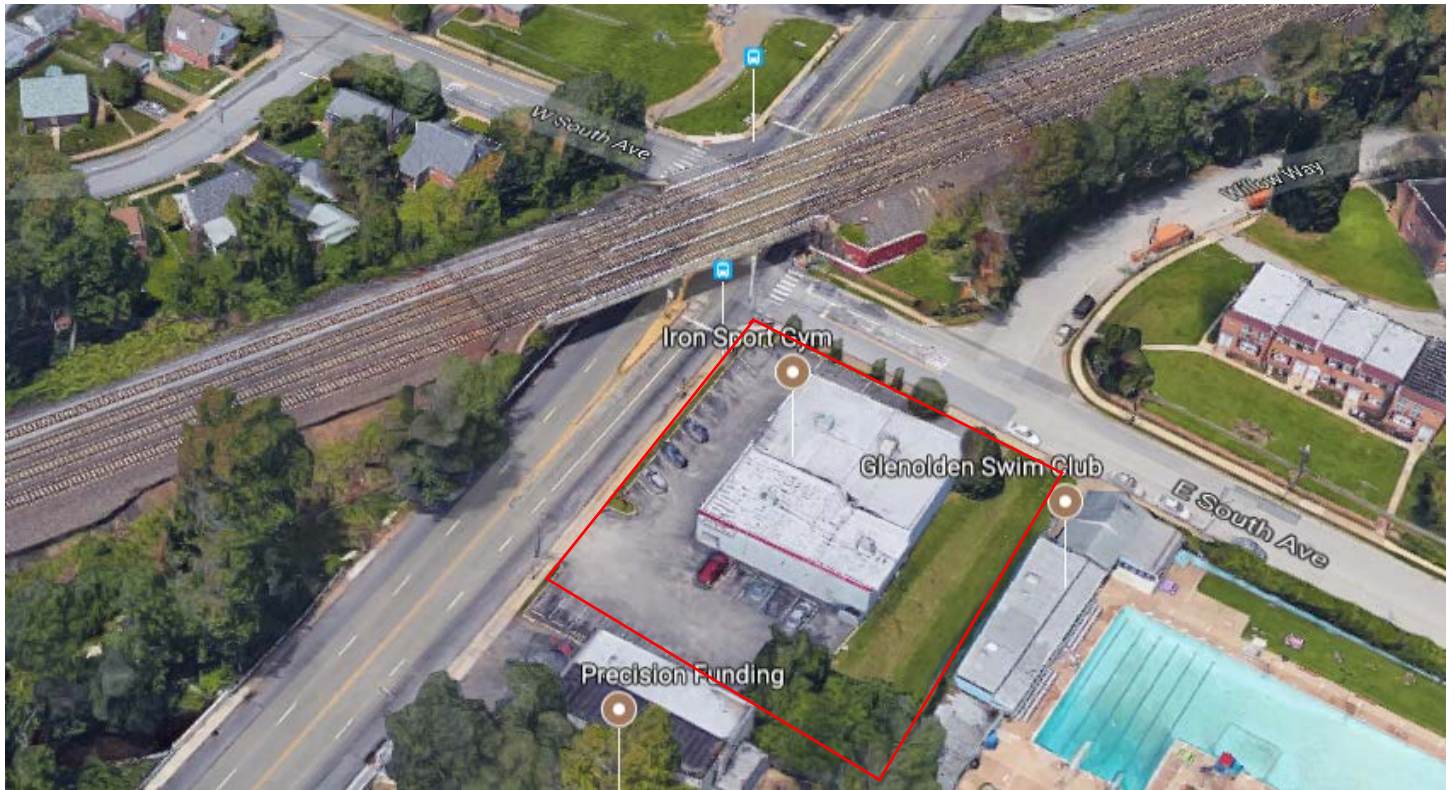


FOR SALE**\$576,000.00****527 Chester Pike - Glenolden, PA 19036****Great Owner/User/Investor Play****High Visibility - Traffic Light corner - Chester Pike (Route 13) & South Avenue****Rail/Bus Public Trans****16,000 Vehicles per day****201' Frontage on Chester Pike****Flexible Business Zoning****Multiple Drive in Door Potential on 3 sides****16' Ceilings****Heavy Power****Call for tour - Do not disturb occupant****Zoned: B1 - Business****Acres: 0.75****Jeffrey B Dowd****Cell: 610-842-4383****Office: 610-359-1100****Fax: 610-359-1125****Email: jdowd@zmcre.com**

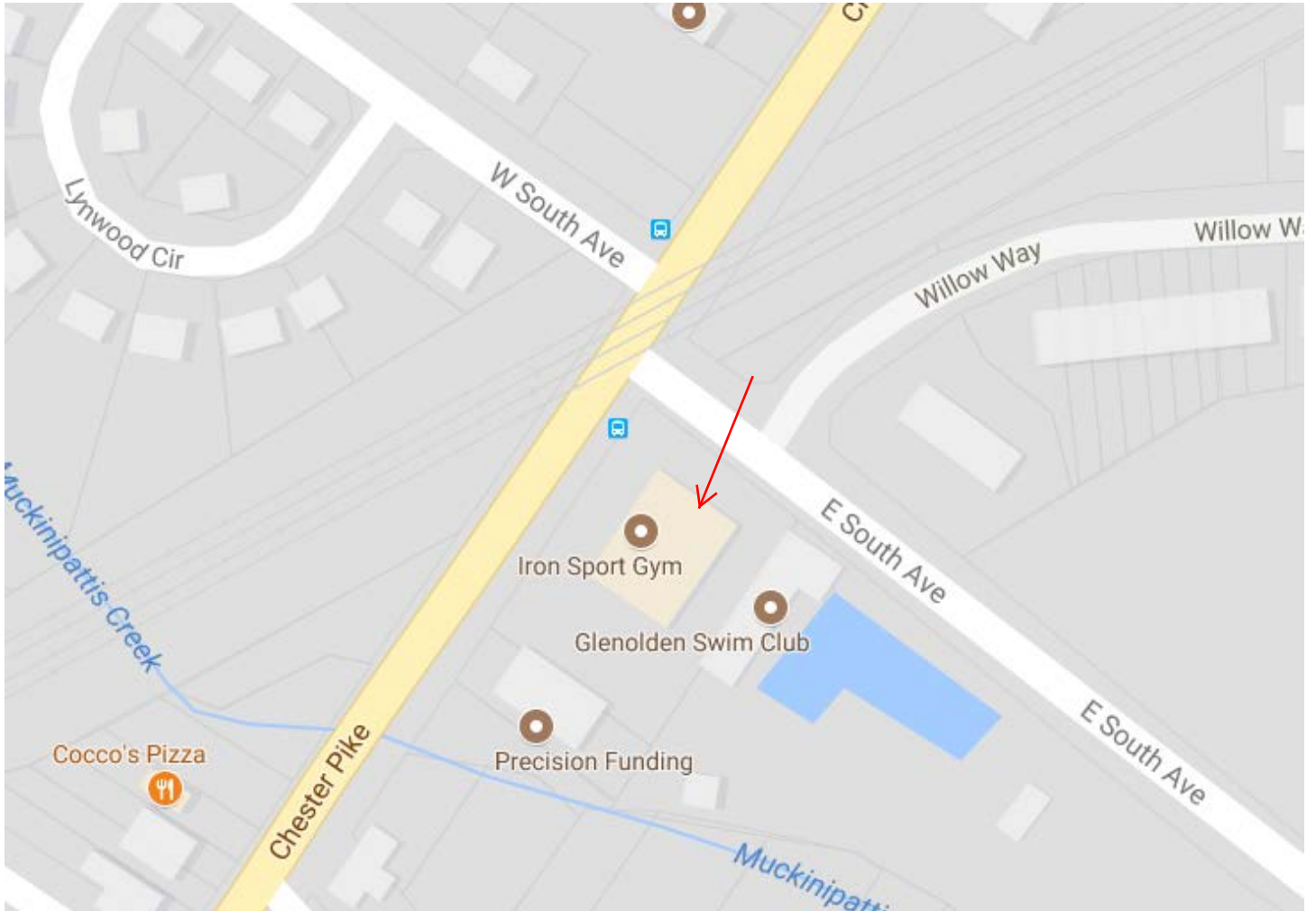
Photos



BIRD'S EYE



MAP VIEW



Tax Map



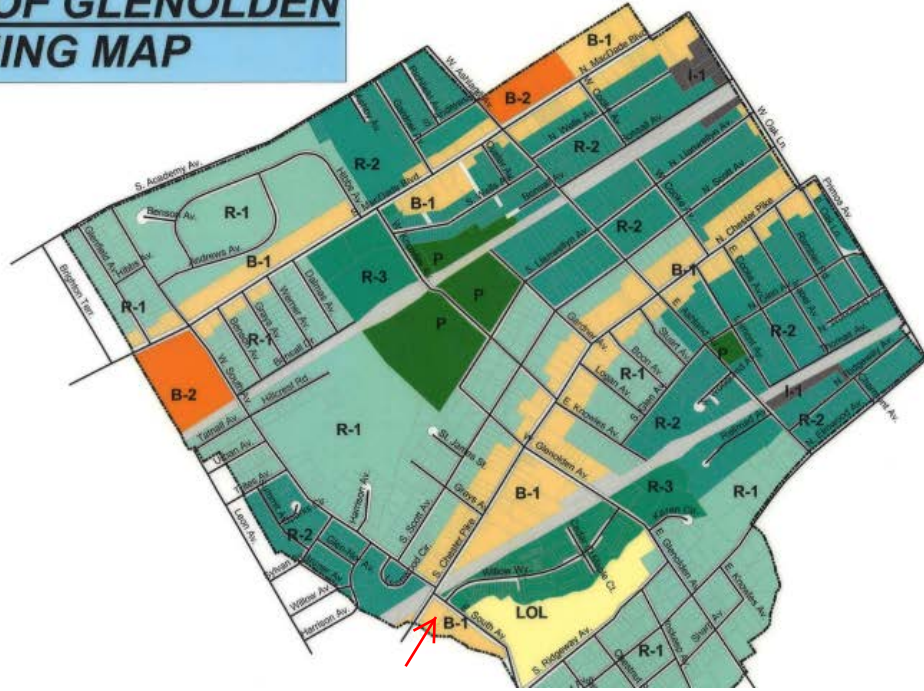
Zoning Map

BOROUGH OF GLENOLDEN ZONING MAP



Legend

- Roads
- Glenolden Borough Zoning Map**
- Zoning Codes**
- R-1 Low Density Residential
- R-2 Medium Density Residential
- R-3 High Density Residential
- B-1 Neighborhood Business
- B-2 Shopping Center
- LOL Limited Office
- I-1 Light Industrial
- P Park
- Paper Street
- Railroad ROW's



Legend

- Roads
- Glenolden Borough Zoning Map**
- Zoning Codes**
- R-1 Low Density Residential
- R-2 Medium Density Residential
- R-3 High Density Residential
- B-1 Neighborhood Business ←
- B-2 Shopping Center
- LOL Limited Office
- I-1 Light Industrial
- P Park
- Paper Street
- Railroad ROW's

*This information above has been obtained from sources believed reliable. While we do not doubt its accuracy, we have not verified it and make no guarantee, warranty or representation about it. It is Buyer/Lessee responsibility to independently confirm its accuracy and completeness. This is not intended to solicit another Broker's listing