



Land for Sale

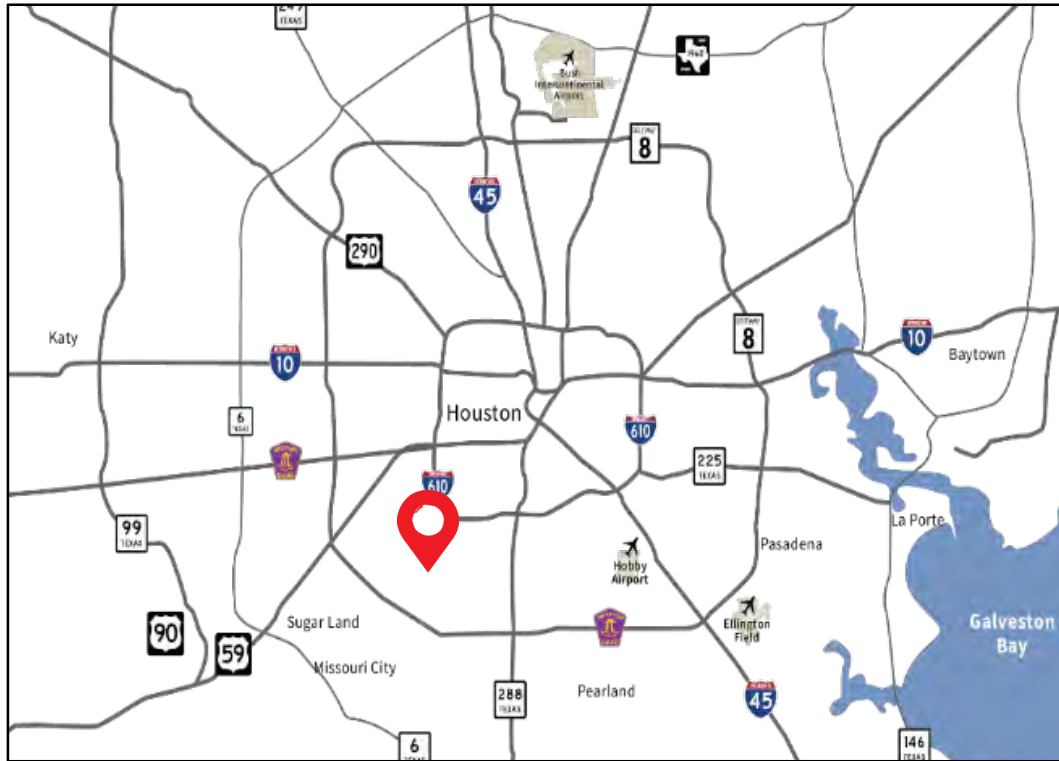
±40 acres available

12631 S. Main Street

Houston, TX 77035



12631 S. Main Street



Location

SWQ of S. Main Street and S. Post Oak Road at South Main Street frontage road, just west of the major S. Post Oak Road thoroughfare.

Size

±40 acres; will divide

Highest & Best Use

Industrial, multi-family, residential

Access & Visibility

Excellent visibility off South Main Street (US Alt 90) and;
Access curb cut in place off of South Main Street frontage road and W. Airport extension.

Drive Times

Site to Beltway 8 6 miles / ±10 minutes
Site to 610 3 miles / ±6 minutes

Utilities

Utilities available to site

Detention

On site detention required

Price

Call broker for pricing



Estimated Population

1-mile	3-miles	5-miles
15,061	138,548	379,605



Average Household Income

1-mile	3-miles	5-miles
\$56,223	\$77,650	\$83,881



Area Traffic Counts

58,320 VPD
S. Main Street at Palmcrest Street
43,971 VPD
S. Post Oak Road at San Pablo Street
43,860 VPD
S. Main Street east of S. Post Oak Road
44,030 VPD
S. Post Oak Road north of S. Main Street



Number of Households

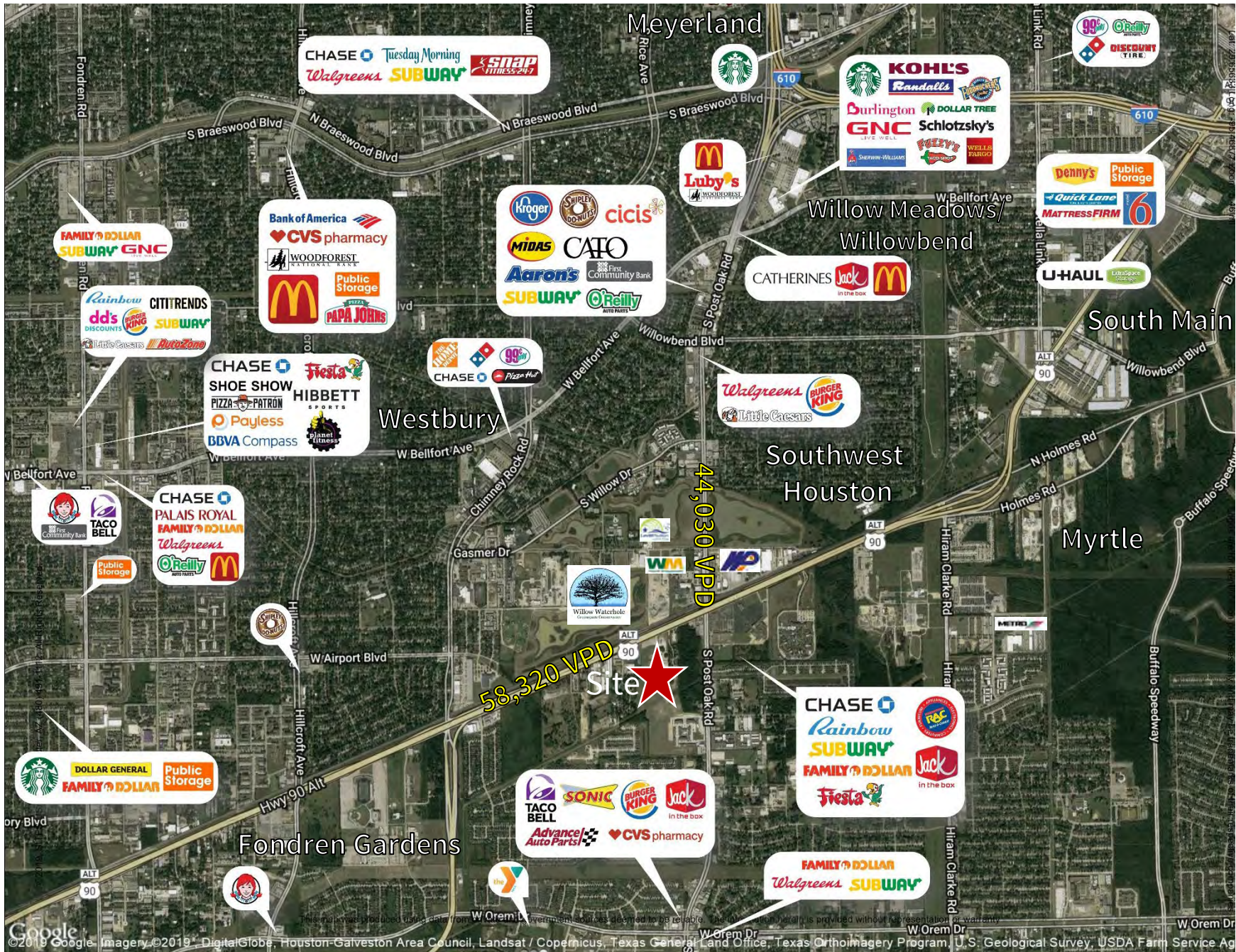
1-mile	3-miles	5-miles
4,254	48,607	134,517



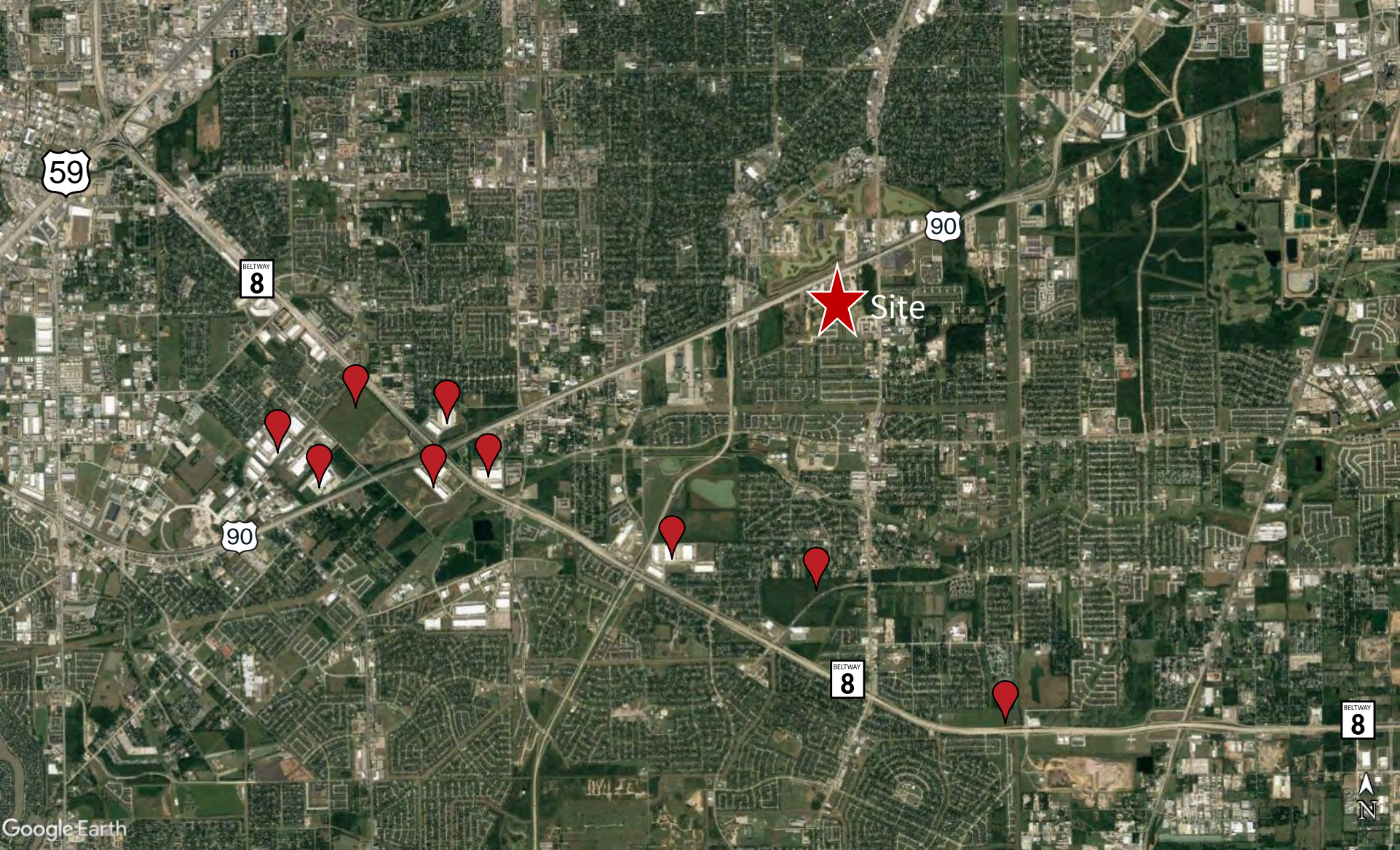
Median Age


1-mile	3-miles	5-miles
30.4	33.6	33.1


±40 acres available at 12631 S. Main Street



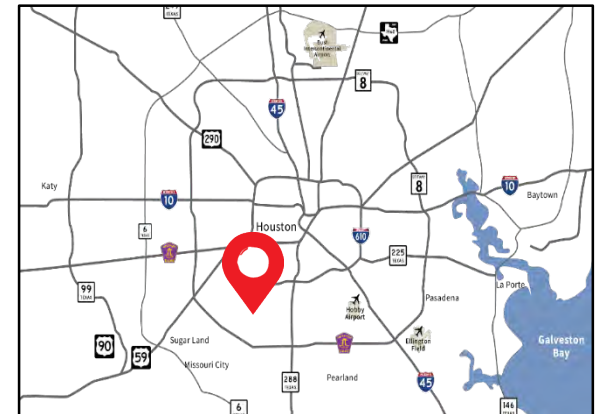
Area Industrial Parks



 Site is accessible to Beltway 8 from both S. Main and S. Post Oak, and is 6 minutes from 610

 Existing or proposed industrial

12631 S. Main Street

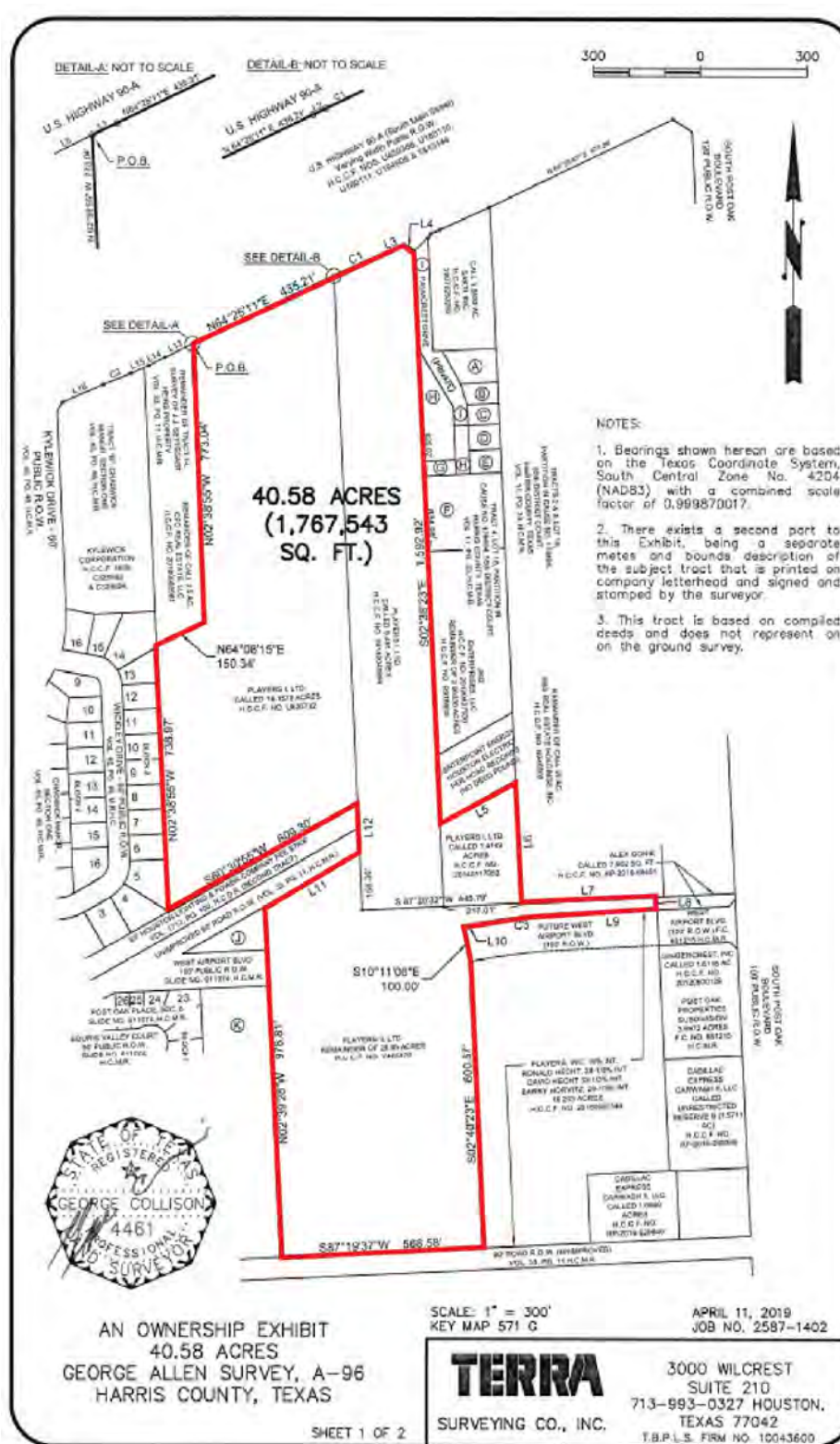


Contact Us

David Buescher
 Senior Vice President
 +1 713 888 4016
 david.buescher@am.jll.com

Chris Bergmann Jr.
 Vice President
 +1 713 425 5868
 chris.bergmann@am.jll.com

Survey



Contact Us

David Buescher
Senior Vice President
+1 713 888 4016
david.buescher@am.jll.com

Chris Bergmann Jr.
Vice President
+1 713 425 5868
chris.bergmann@am.jll.com