

14555 JIB STREET  
PLYMOUTH, MICHIGAN

INDUSTRIAL FOR SALE OR LEASE  
34,333 Square Feet Available



**SIGNATURE  
ASSOCIATES**  
KNOW SIGNATURE | KNOW RESULTS

## METRO WEST INDUSTRIAL PARK



### PROPERTY FEATURES

- 34,333 square feet available
- 8,500 square feet of office
- 24' clear height
- (2) 8x8, 12x14 grade level doors, (3) truckwells
- (1) 10-Ton bridge crane the length of the building
- Zoned Industrial Improved
- 50 parking spaces
- Shop has exhaust fans, lunchroom, buss duct, and airlines
- Kitchenette located in the front office area
- Lease Rate: \$6.75/sq.ft. NNN
- Sale Price: \$2,437,643 (\$71.00/sq.ft.)



For more information, please contact:

**STEVE GORDON**  
(248) 948 0101  
sgordon@signatureassociates.com

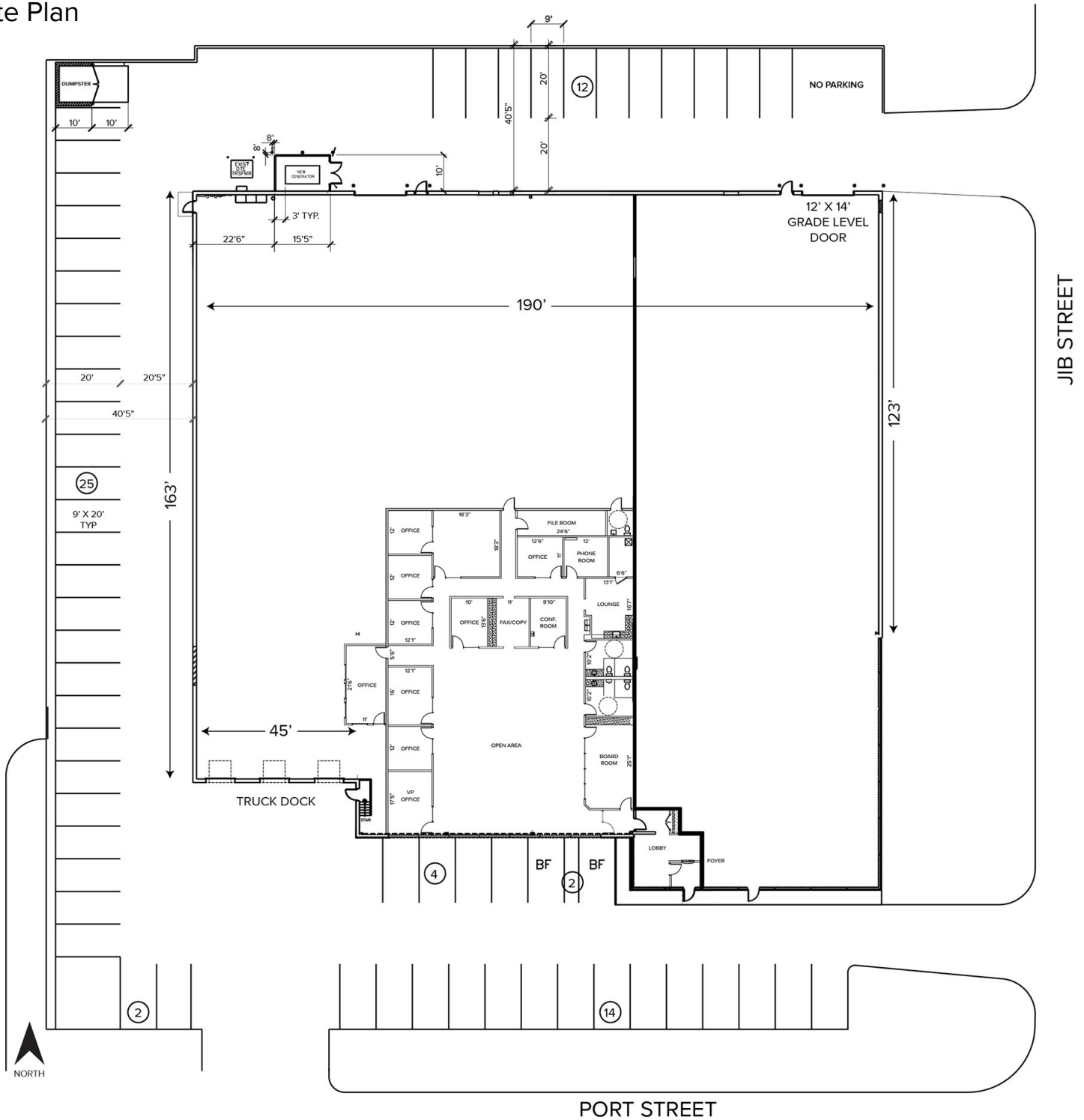
**SIGNATURE ASSOCIATES**  
One Towne Square, Suite 1200  
Southfield, MI 48076  
www.signatureassociates.com

# 14555 Jib Street – Plymouth, Michigan

Industrial For Sale or Lease

34,333  
Square Feet  
AVAILABLE

## Site Plan



For more information, please contact:

**STEVE GORDON**  
(248) 948 0101  
sgordon@signatureassociates.com

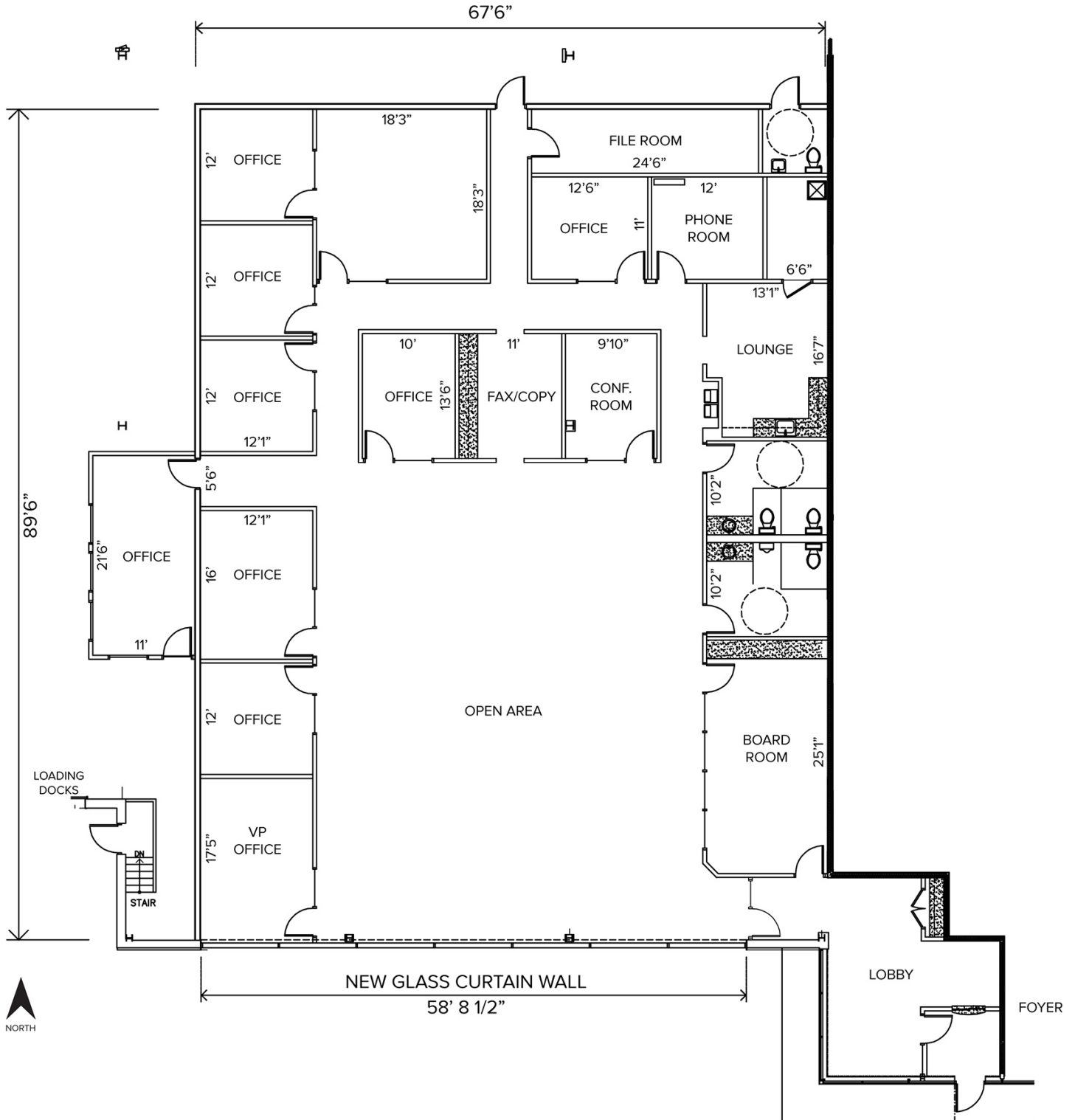
**SIGNATURE ASSOCIATES**  
One Towne Square, Suite 1200  
Southfield, MI 48076  
www.signatureassociates.com

# 14555 Jib Street – Plymouth, Michigan

Industrial For Sale or Lease

34,333  
Square Feet  
AVAILABLE

## Floor Plan



For more information, please contact:

**STEVE GORDON**  
(248) 948 0101  
sgordon@signatureassociates.com

**SIGNATURE ASSOCIATES**  
One Towne Square, Suite 1200  
Southfield, MI 48076  
www.signatureassociates.com



# 14555 Jib Street – Plymouth, Michigan

Industrial For Sale or Lease

34,333  
Square Feet  
AVAILABLE

Aerial



For more information, please contact:

**STEVE GORDON**  
(248) 948 0101  
sgordon@signatureassociates.com

**SIGNATURE ASSOCIATES**  
One Towne Square, Suite 1200  
Southfield, MI 48076  
www.signatureassociates.com