

RIVERPOINT CORPORATE CENTER

18300 Cascade Avenue South, Seattle, WA

1,090–4,550 SF AVAILABLE
Class A Office Space



NEWMARK



BLAKE BENTZ
425.362.1391
blake.bentz@ngkf.com

CAM WARREN
425.362.1395
cam.warren@ngkf.com

CAVAN O'KEEFE
206.395.2903
cavan.okeefe@ngkf.com

PROPERTY FEATURES

- Local ownership group, aggressive deal makers
- Two (2) building class "A" office campus
- On-site amenities include a fitness center and showers
- Minutes to Westfield Shopping Center
- Convenient access to I-5, I-405, and SR-167
- Abundant free parking, ratio 4.0/1,000 sf
- Seattle mailing address

SPACE AVAILABLE

SUITE	AREA	DIVISIBLE	RATE PSF
220	4,550 SF	Yes	\$17.00-18.00 NNN
252	2,764 SF	No	\$17.00-18.00 NNN

V

Total Campus SF: _____ 103,425 SF

Total Available: _____ 1,090-4,550 SF

Lease Rate: _____ \$17.00-18.00 NNN

Parking: _____ 4.0/1,000 SF

Tenant improvement: _____ Turn-Key



AMENITIES MAP

thriftbooks



WESTFIELD
SOUTHCENTER
2.5 MILES



NORDSTROM



PARKWAY
SUPER CENTER
1.6 MILES



RIVERPOINT
CORPORATE CENTER

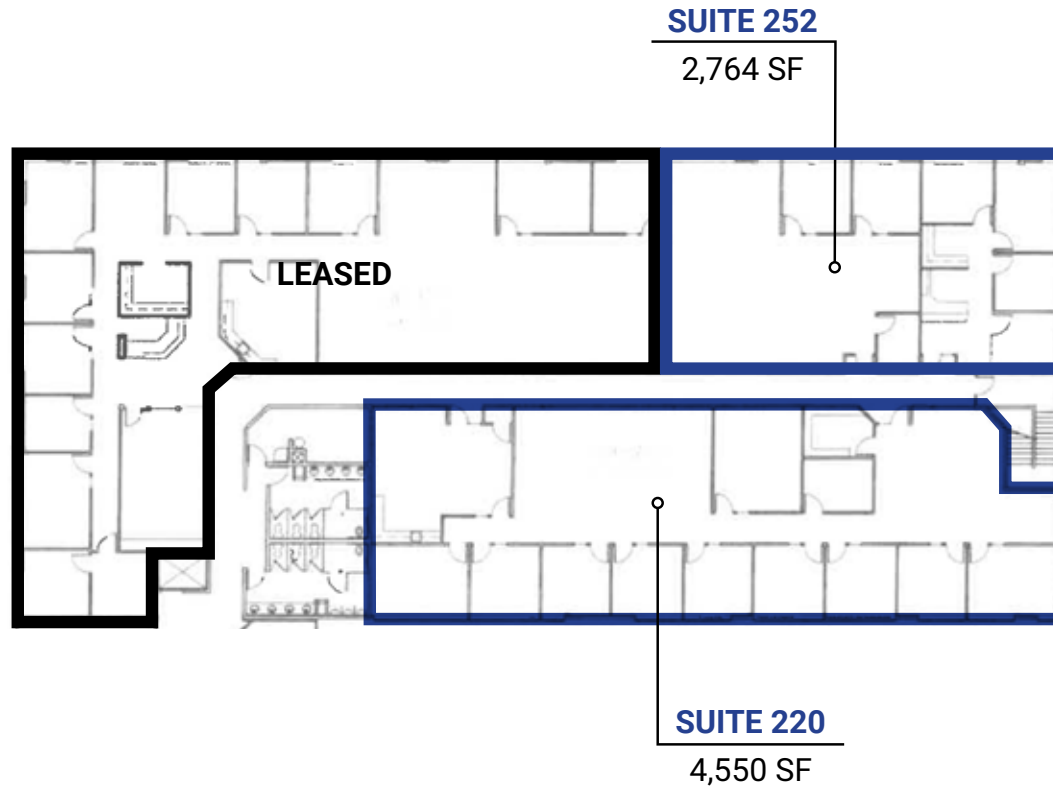
INTERIOR PHOTOS

thriftbooks



FLOOR PLAN

2ND FLOOR





RIVERPOINT CORPORATE CENTER

18300 Cascade Avenue South, Seattle, WA

NEWMARK



BLAKE BENTZ
425.362.1391
blake.bentz@ngkf.com

CAM WARREN
425.362.1395
cam.warren@ngkf.com

CAVAN O'KEEFE
206.395.2903
cavan.okeefe@ngkf.com

The distributor of this communication is performing acts for which a real estate license is required. The information contained herein has been obtained from sources deemed reliable but has not been verified and no guarantee, warranty or representation, either express or implied, is made with respect to such information. Terms of sale or lease and availability are subject to change or withdrawal without notice. 18-1023_8/19