



2100

WEST LOOP SOUTH

— R E D E F I N E D —



OWNED BY:



2100WESTLOOPSOUTH.COM



2100

WEST LOOP SOUTH

— R E D E F I N E D —

Prime 16-story building located in one of the world's most prestigious business districts

- » Revitalized interior and exterior with quality Class A finishes and a modern entrance to match
- » Around the clock security service with onsite property management
- » Improved building systems and HVAC performance
- » Close proximity to Houston's finest amenities
- » Convenient onsite deli and conference facility
- » Institutional ownership and professional onsite management
- » Two new monument signs with back lighting with West Loop visibility

Click to play video



CONVENIENCE

Nestled in Houston's most attractive area, less than 1 mile from numerous Galleria and Uptown restaurants, shops and luxurious hotels.

WITHIN A 3 MINUTE DRIVETIME

374

Retail Stores

137

Restaurants & Lounges

56

Hotels

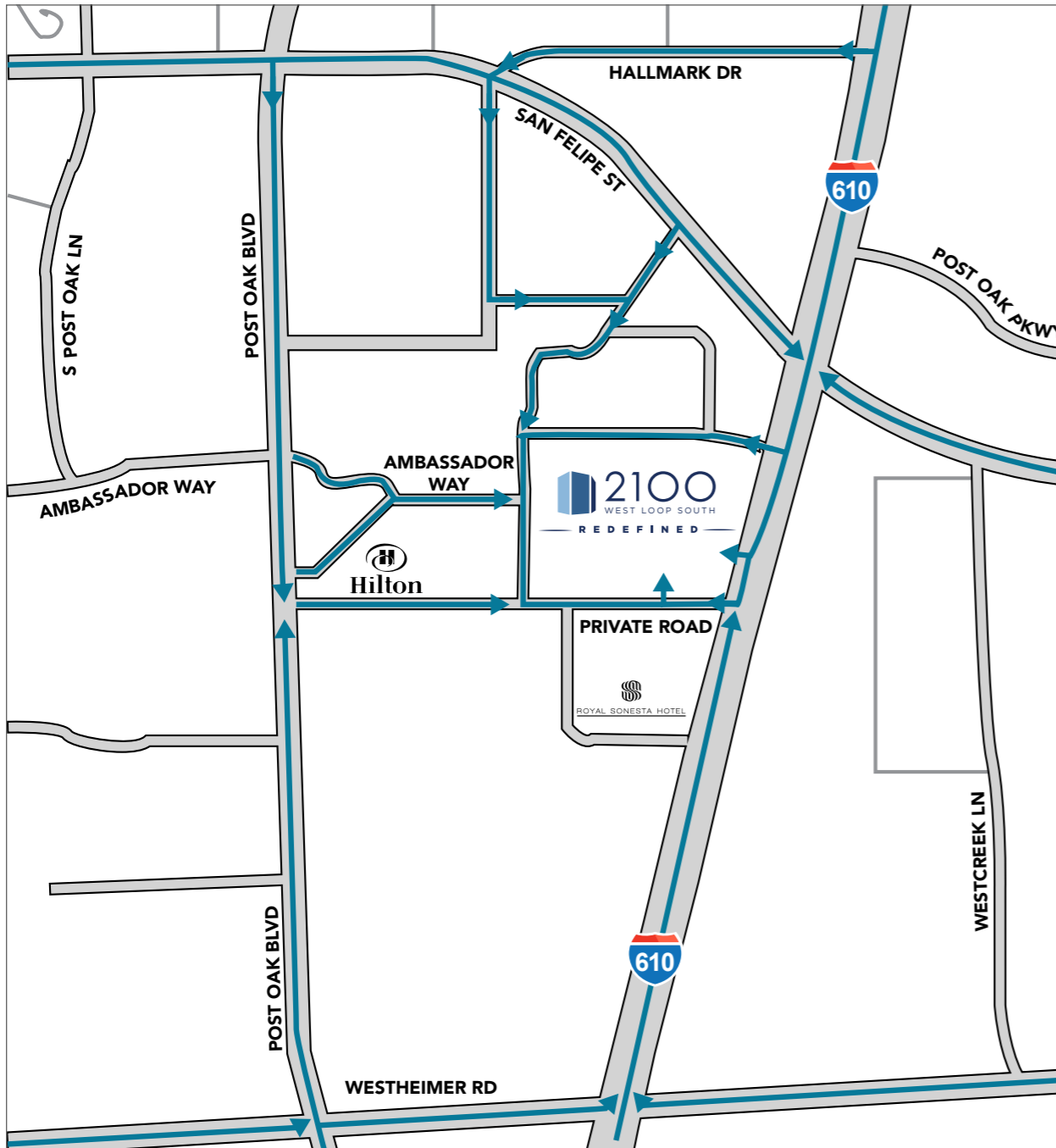
- | | | |
|--|--|---|
| 1  | 2  | 3  |
| 4  | 5  | 6  |
| 7  | 8  | 9  |
| 10  | 11  | 12  |
| 13  | 14  | 15  |
| 16  | 17  | 18  |
| 19  | 20  | 21  |




2100
WEST LOOP SOUTH
— REDEFINED —

SUPERIOR ACCESS

INGRESS



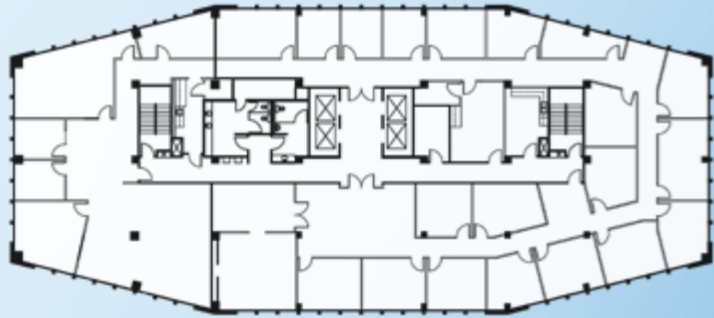
EGRESS



*Multiple ways to enter and exit the building

AVAILABLE SPACE

» Direct access into the building on levels 1-5 via parking garage



TYPICAL FLOOR PLAN

- » Rectangular Floor Plate
- » 10,500 RSF Floor Plates



Suite 1550 637 SF

Suite 1450 5,495 SF

Suite 620 2,446 SF

Suite 200 (avail 1/1/18) 2,835 SF
Suite 225 1,765 SF





2100
WEST LOOP SOUTH

REDEFINED

2100WESTLOOPSOUTH.COM

Doug Little

713.272.1284 | Doug.Little@transwestern.com

Louann Pereira

713.272.1267 | Louann.Pereira@transwestern.com

Matthew Seliger

713.231.1583 | Matthew.Seliger@transwestern.com

OWNED BY:



LEASED & MANAGED BY:

