

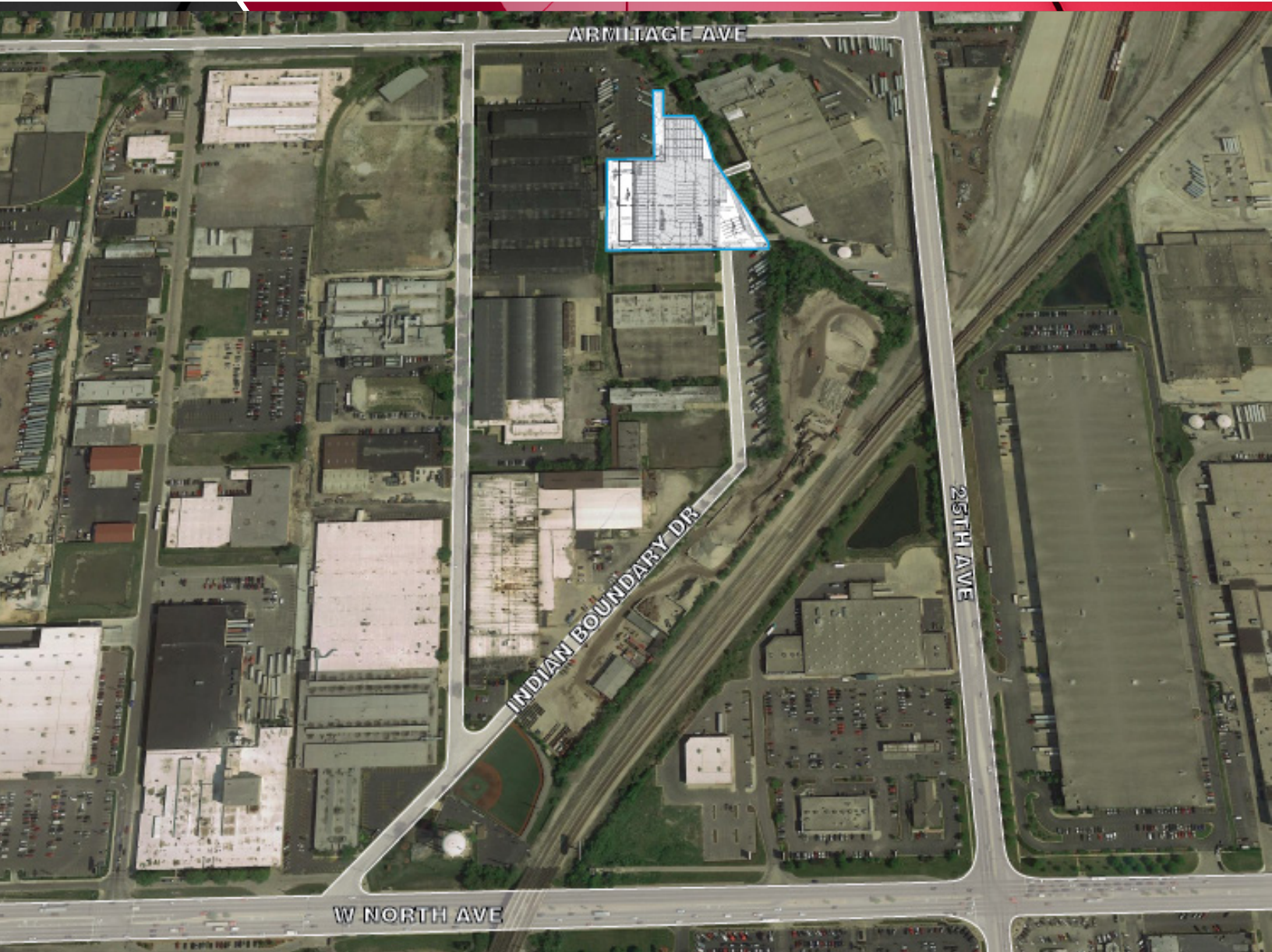
3.53 ACRES

INDUSTRIAL BUILDING

2060 INDIAN BOUNDARY DRIVE

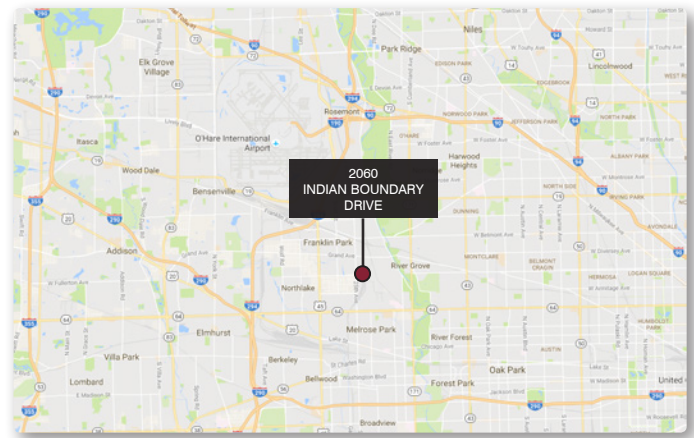
MELROSE PARK • ILLINOIS • 60160

MELROSE O'HARE
BUSINESS PARK



Property Highlights

- Great Central Location w/easy access to 290/294
- 55 Trailer Parking Spots
- Can be Combined with 2020 Indian Boundary Drive, 2040 Indian Boundary Drive, 2525 Armitage Avenue, or Stand Alone
- **Asking Price:** For Sale / Lease - STO



For More Information,
Please Contact

JOHN SHARPE
CCIM, SIOR, LEED-AP
jsharpe@lee-associates.com
773.355.3030

RYAN KEHOE
rkehoe@lee-associates.com
773.355.3034

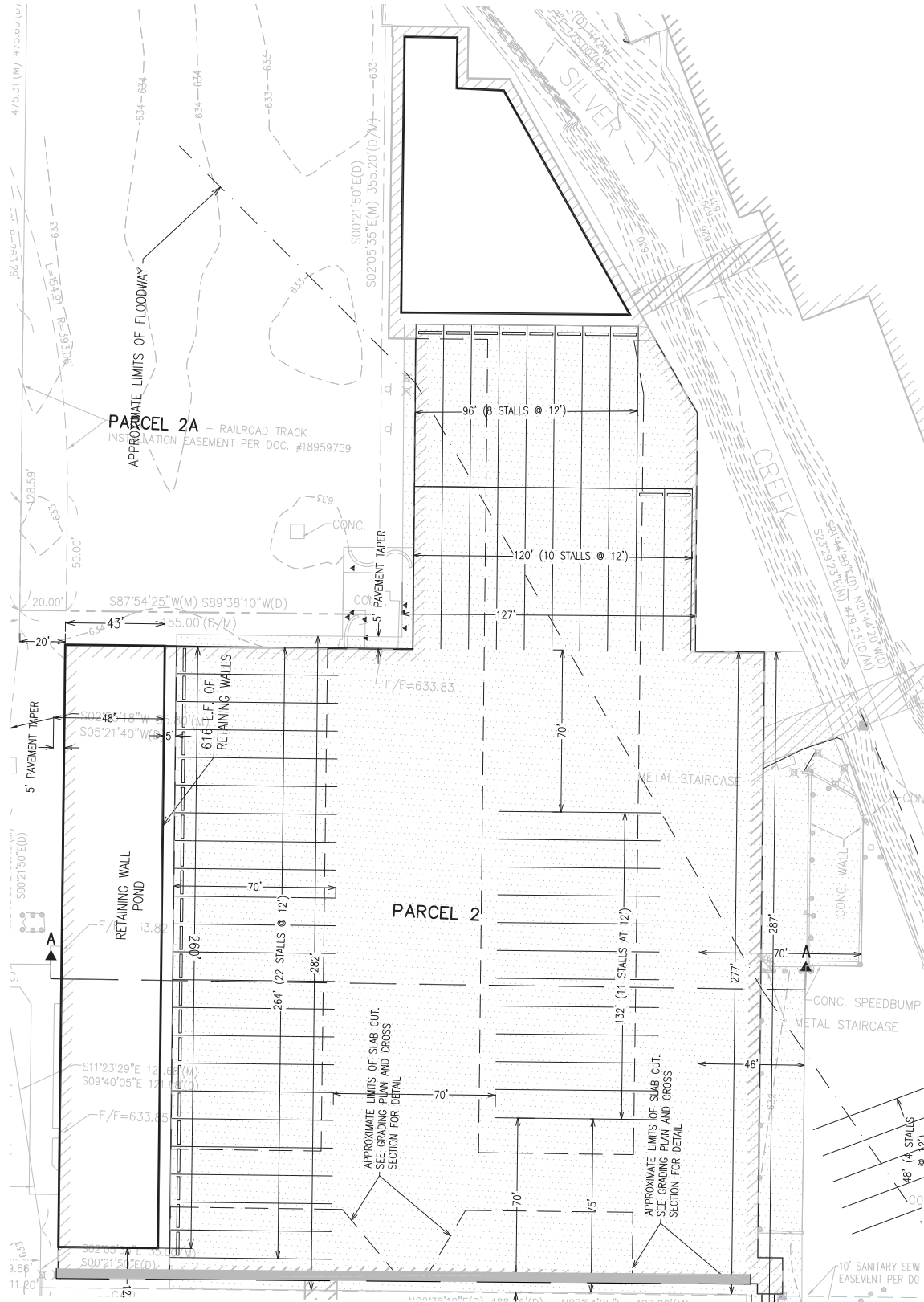


LEE & ASSOCIATES OF ILLINOIS, LLC | Corporate ID# 01125429
9450 W Bryn Mawr Ave, Ste 550, Rosemont, IL 60018

☎ 773.355.3000 | 📠 847.233.0068 | www.lee-associates.com

LOCAL EXPERTISE. NATIONAL REACH. WORLD CLASS

The information has been furnished from sources which we deem reliable, but for which we assume no liability. Any projections, opinions, assumptions or estimates used are for example only and do not represent the current or future performance of the property. Buyers should consult with their independent advisors to determine if the property is suitable for their needs.

3.53 ACRES**INDUSTRIAL BUILDING****2060 INDIAN BOUNDARY DRIVE****MELROSE PARK • ILLINOIS • 60160****MELROSE O'HARE
BUSINESS PARK**For More Information,
Please Contact

JOHN SHARPE
CCIM, SIOR, LEED-AP
jsharpe@lee-associates.com
773.355.3030

RYAN KEHOE
rkehoe@lee-associates.com
773.355.3034



LEE & ASSOCIATES OF ILLINOIS, LLC | Corporate ID# 01125429
9450 W Bryn Mawr Ave, Ste 550, Rosemont, IL 60018

☎ 773.355.3000 | 📠 847.233.0068 | www.lee-associates.com

LOCAL EXPERTISE. NATIONAL REACH. WORLD CLASS

The information has been furnished from sources which we deem reliable, but for which we assume no liability. Any projections, opinions, assumptions or estimates used are for example only and do not represent the current or future performance of the property. Buyers should consult with their independent advisors to determine if the property is suitable for their needs.