



**OFFICE SPACE FOR SUBLEASE - \$3 BROKER BONUS!**

# **BANK OF AMERICA PLAZA**

333 S. HOPE STREET | LOS ANGELES, CALIFORNIA 90071

**CONTACT**

**J.D. DEROSA**

Vice President  
213.430.2531  
jd.derosa@transwestern.com  
CA License 01345222

**GERRY RUIZ**

Associate  
213.430.2520  
gerry.ruiz@transwestern.com  
CA License 02023671



OFFICE SPACE FOR SUBLEASE - **\$3 BROKER BONUS!**

# BANK OF AMERICA PLAZA

333 S. HOPE STREET | LOS ANGELES, CALIFORNIA 90071

## DETAILS

- 7,694 RSF on the 11th floor
- Term through April 30, 2023
- Asking rate: \$18.00/RSF/Annum/FSG
- Rental abatement available

## HIGHLIGHTS

- One office plus two conference rooms
- Bullpen with multiple cubicles
- Kitchen and copy area
- Furniture included

## BUILDING HIGHLIGHTS

- On-site property management
- Bank of America banking center/ATM, sundry, dry cleaning, car services, and concierge
- 200-seat auditorium with full A/V and WiFi capabilities
- Surrounded by restaurants, hotels, shopping, entertainment and cultural venues
- Central to all major freeways
- Transportation includes Commuter Express and adjacent METRO Regional Connector station (under construction)



**J.D. DEROSA**  
jd.derosa@transwestern.com  
213.430.2531

**GERRY RUIZ**  
gerry.ruiz@transwestern.com  
213.430.2520

The information provided herein was obtained from sources believed reliable; however, Transwestern makes no guarantees, warranties or representations as to the completeness or accuracy thereof. The presentation of this property is submitted subject to errors, omissions, change of price or conditions, prior sale or lease, or withdrawal without notice. Copyright © 2019 Transwestern.

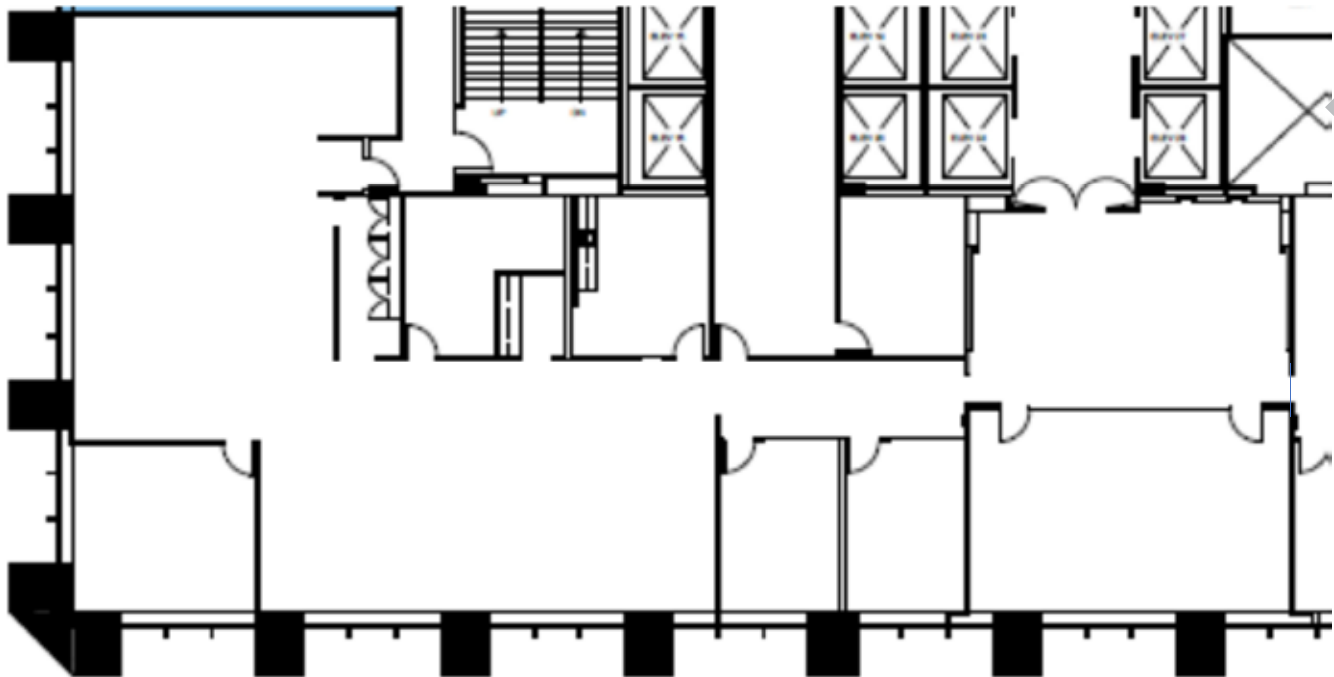
OFFICE SPACE FOR SUBLEASE - **\$3 BROKER BONUS!**

# BANK OF AMERICA PLAZA

333 S. HOPE STREET | LOS ANGELES, CALIFORNIA 90071

## FLOOR PLAN

---



601 S. Figueroa Street  
Suite 2750  
Los Angeles, California 90017

T 213.624.5700  
F 213.624.9203  
transwestern.com

**J.D. DEROSA**  
jd.derosa@transwestern.com  
213.430.2531

**GERRY RUIZ**  
gerry.ruiz@transwestern.com  
213.430.2520

The information provided herein was obtained from sources believed reliable; however, Transwestern makes no guarantees, warranties or representations as to the completeness or accuracy thereof. The presentation of this property is submitted subject to errors, omissions, change of price or conditions, prior sale or lease, or withdrawal without notice. Copyright © 2020 Transwestern. CA License 01263636