



N.W. Corner of S.E. 59th Street & Bryant Avenue

Oklahoma City, Oklahoma 73129

PROPERTY HIGHLIGHTS

- 10.74 Acres Residential Zoning
- Great Access to I-240
- Close to Existing Housing & Schools
- 967' of Frontage on S. Bryant Avenue & 637' on S.E. 59th Street

www.naisullivangroup.com

Darryl Meason

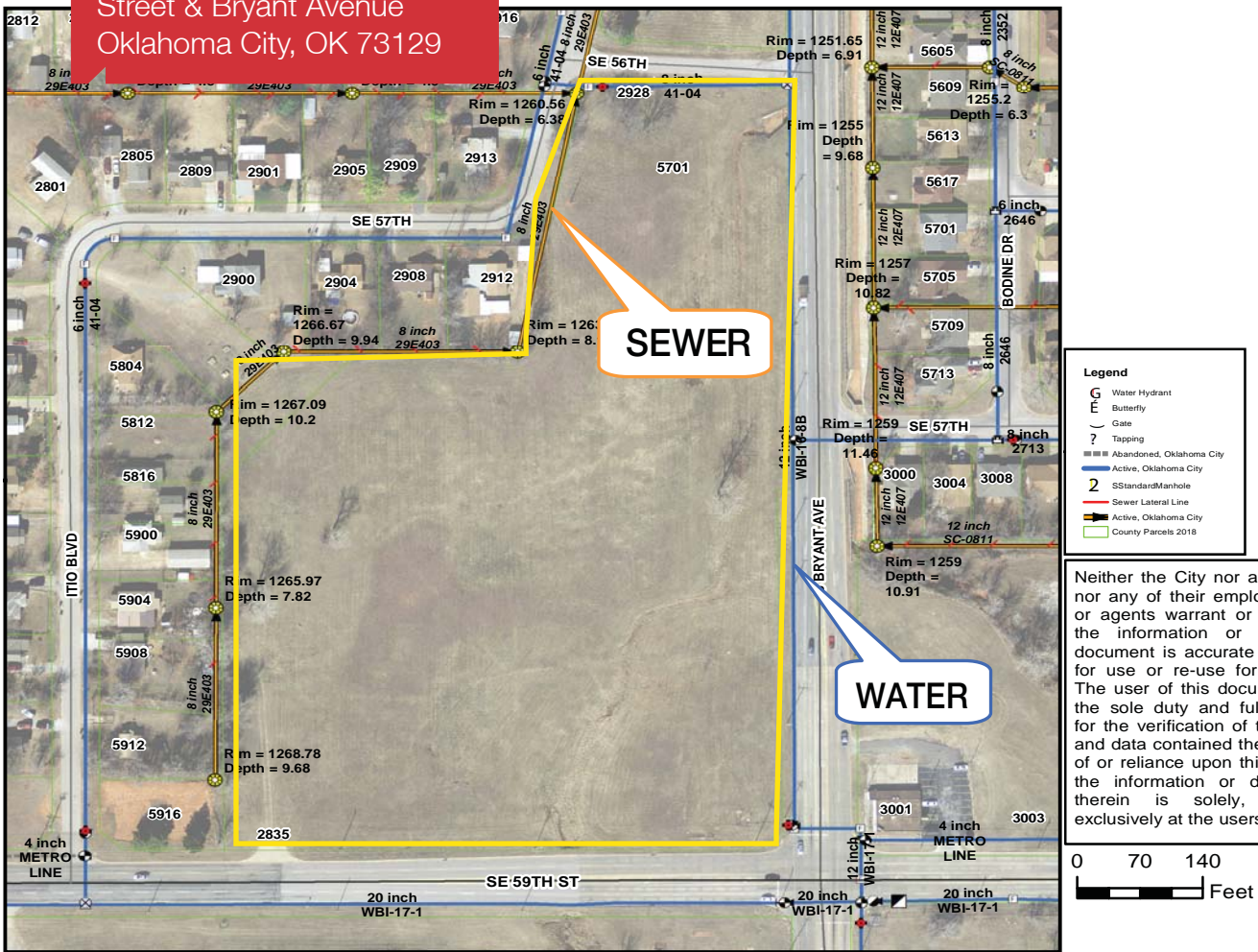
Cell: 1 405 205 9440

darryl@naisullivangroup.com

NO WARRANTY OR REPRESENTATION, EXPRESS OR IMPLIED, IS MADE AS TO THE ACCURACY OF THE INFORMATION CONTAINED HEREIN, AND THE SAME IS SUBMITTED SUBJECT TO ERRORS, OMISSIONS, CHANGE OF PRICE, RENTAL OR OTHER CONDITIONS, PRIOR SALE, LEASE OR FINANCING, OR WITHDRAWAL WITHOUT NOTICE, AND OF ANY SPECIAL LISTING CONDITIONS IMPOSED BY OUR PRINCIPALS NO WARRANTIES OR REPRESENTATIONS ARE MADE AS TO THE CONDITION OF THE PROPERTY OR ANY HAZARDS CONTAINED THEREIN ARE ANY TO BE IMPLIED.

4045 N.W. 64th Street, Suite 340
Oklahoma City, Oklahoma 73116
Office: 1 405 840 0600
Fax: 1 405 840 0610

N.W. Corner of S.E. 59th
Street & Bryant Avenue
Oklahoma City, OK 73129



DEMOGRAPHICS

Population

1 Mile: 7,099	3 Mile: 68,867	5 Mile: 175,575
------------------	-------------------	--------------------

Average Household Income

1 Mile: \$34,819	3 Mile: \$45,141	5 Mile: \$44,073
---------------------	---------------------	---------------------

Total Households

1 Mile: 2,468	3 Mile: 24,247	5 Mile: 66,233
------------------	-------------------	-------------------

Darryl Meason

Cell: 1 405 205 9440

darryl@naisullivangroup.com

www.naisullivangroup.com

NAISullivan Group

4045 N.W. 64th Street, Suite 340
Oklahoma City, Oklahoma 73116
Office: 1 405 840 0600
Fax: 1 405 840 0610