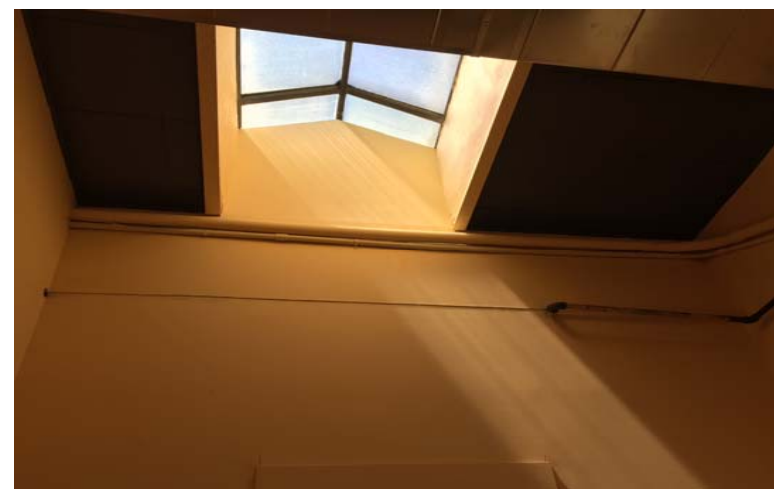


DIVISION STREET | RETAIL / CREATIVE SPACE FOR LEASE

4831 SE Division Street, Portland, OR

+/- 1,800 Square Feet Available



EXCLUSIVELY OFFERED BY:

Andrew Bean , Doug Bean & Associates, Inc.
abean@dougbean.com • (503) 222-5100

DIVISION STREET | RETAIL / CREATIVE SPACE FOR LEASE

Available | 1,800 RSF (+/-)

Annual Rate | \$24.00/SF NNN

- Features |**
- Zoning allows for Retail, Office and/or Light Industrial (Manufacturing and Production) Uses
 - Corner Space
 - High ceilings
 - Trendy, up-and-coming location

Area | SE Division Street has become one of the hottest retail corridors in the city. About half a mile east from Division’s retail epicenter, the area around 4831 SE Division Street is ideally positioned to serve various desirable neighborhoods such as Richmond, Sunnyside, and Mt. Tabor—while still being in the path of progress that will bring with it more people and action.

Demographics 	1 mile	3 miles	5 miles
2018 Population	27,659	213,388	519,767
Median Age	38.30	38.50	38.40
Median HH Income	\$74,262	\$64,069	\$62,891
Daytime Population	9,295	124,117	375,449
Traffic Count	22,650		

Information contained herein has been obtained from others and is considered to be reliable. However, a prospective purchaser or lessee is expected to verify all information to their own satisfaction.

