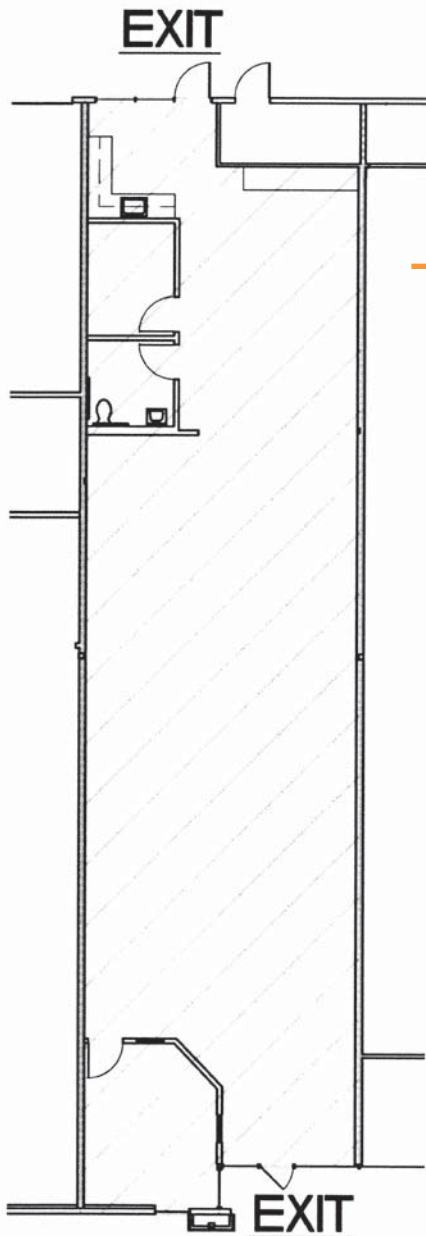


**2,304 SF RETAIL SPACE AVAILABLE
BUILDING 1, SUITE 140**

11700 NE 95TH STREET, SUITE 140, VANCOUVER, WA 98682



**SUITE 140
HIGHLIGHTS & FEATURES**

- High Visibility from NE 117th Ave.
- At Signalized Intersection
- On-Site Property Management
- Current Wellness uses in the park include: Chiropractor, Primary Care Physician, Dentist, Substance Counseling, Allergy/ Asthma Center, Hair Salon and Nail Salon
- Ample Parking

paddencp.com

Available: Now



PADDEN

WELLNESS CENTER

FOR LEASE

NOW AVAILABLE! BUILDING 1, SUITE 140

11700 NE 95th Street, Suite 140, Vancouver, WA 98682



LEASING CONTACTS

Coleman Brown, CCIM
Columbia Commercial, LLC
Coleman@CCPprop.com
360.735.8001

Dave Brown, CCIM, SIOR
Columbia Commercial, LLC
Dave@CCPprop.com
360.735.8001

paddencp.com



OWNED & MANAGED BY:



**Columbia
Commercial**
Commercial Leasing | Sales | Property Management



WESTCORE