



1420 S MAPLE GROVE ROAD

1420 S MAPLE GROVE ROAD, BOISE, ID 83709

LAND

FOR SALE



PROPERTY HIGHLIGHTS

- Centrally located on the E. Side of Maple Grove near the Overland/ Maple Grove Intersection
- C-2D zone allows for many uses
- Excellent visibility
- Directly across the street from the Maple Grove entrance to Black Eagle Business Park

PROPERTY INFORMATION:

Sale Price: **\$392,475 (\$8.50 psf)**

Lot Size: **1.06 Acres**

APN #: **R5021720008**

Zoning: **C-2D**

Market: **Boise**



380 E. Parkcenter Boulevard
 Suite 290
 Boise, ID 83706
www.icrellc.com
 (208) 429.8603 / office / (208) 429-8604 fax

LISTING AGENT:

Jim Hosac
jim@icrellc.com
 o / 208.922.6681
 c / 208.850.8470

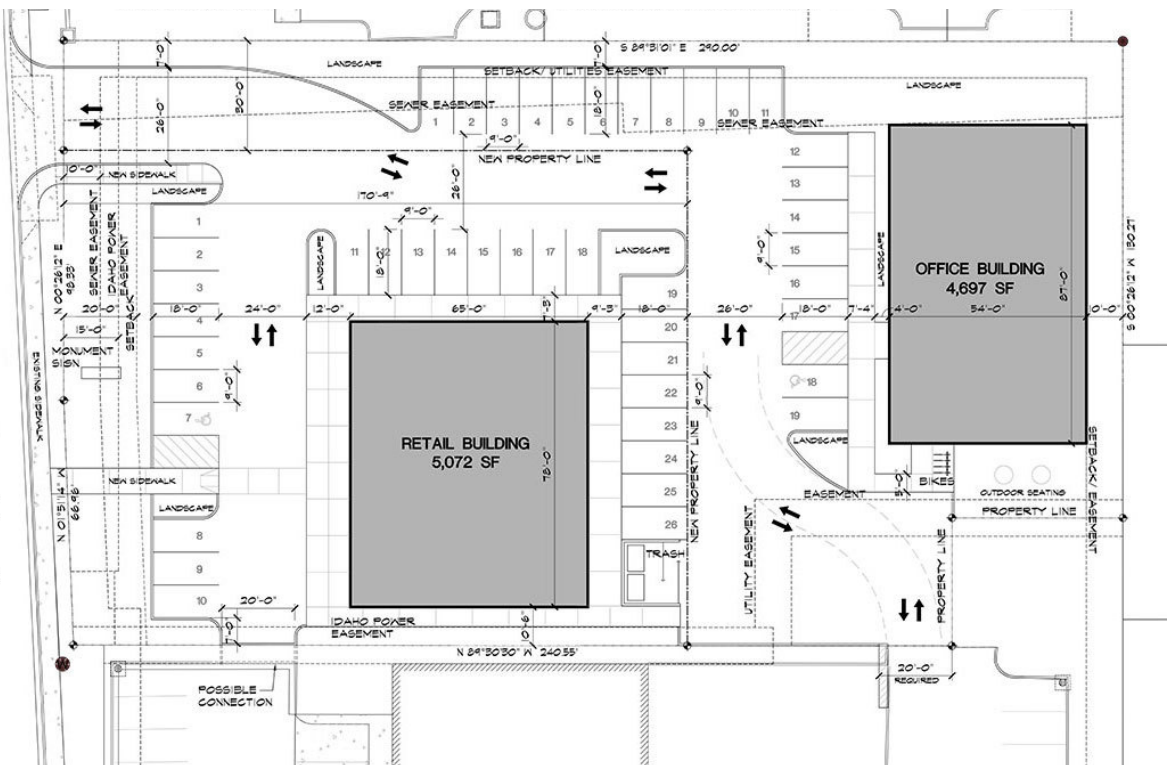
1420 S MAPLE GROVE ROAD

BOISE, ID 83709

CONCEPTUAL SITE PLAN



South Maple Grove Road



LAND



INTERMOUNTAIN
COMMERCIAL REAL ESTATE

380 E. Parkcenter Boulevard
Suite 290
Boise, ID 83706
www.icrell.com
(208) 429.8603 / office / (208) 429-8604 fax

LISTING AGENT:

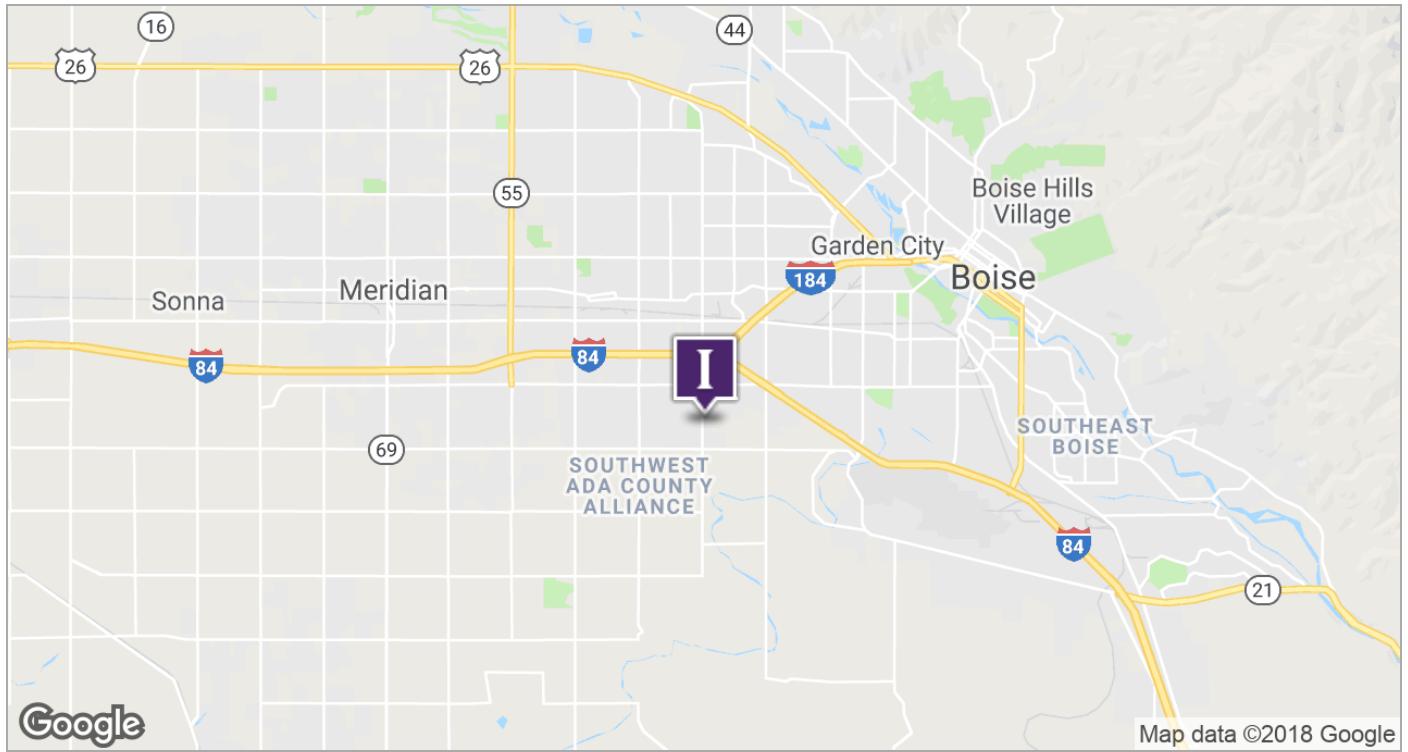
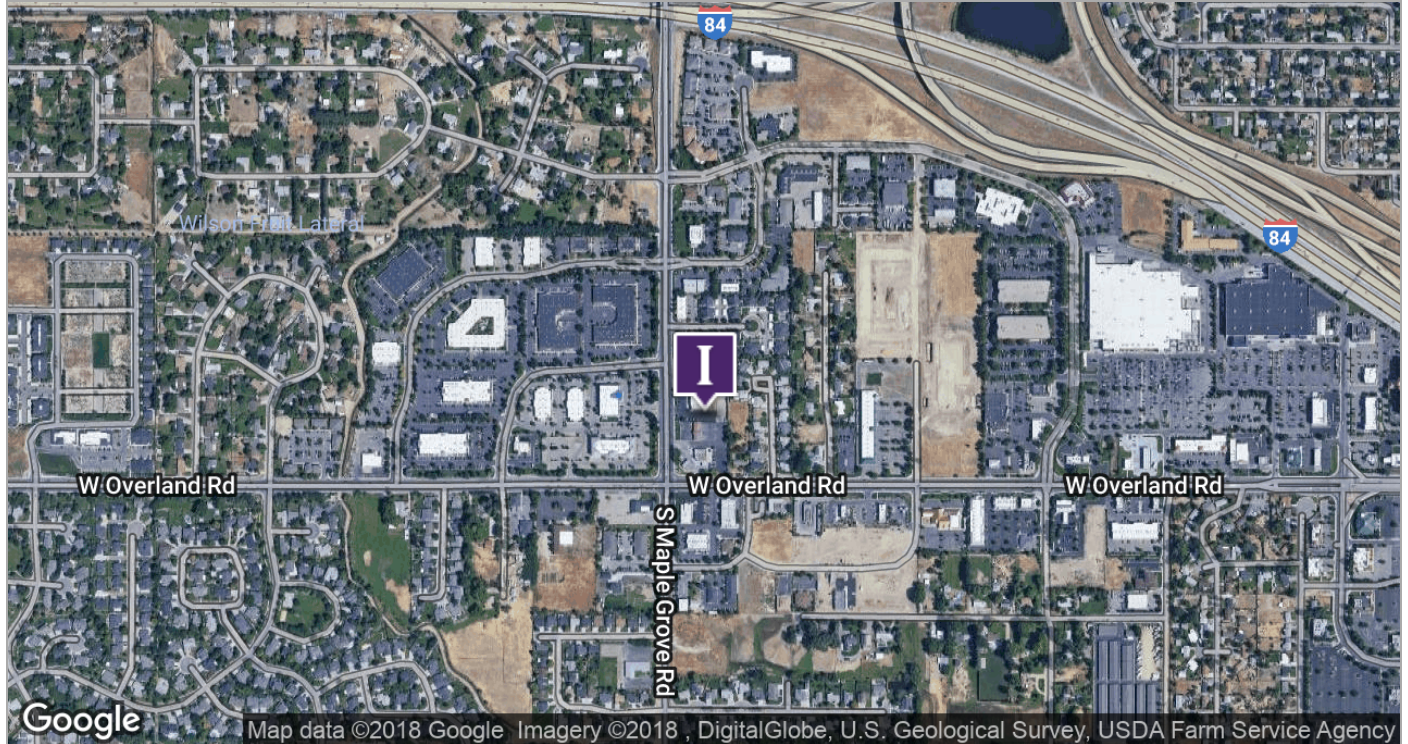
Jim Hosac
jjm@icrell.com
o / 208.922.6681
c / 208.850.8470



1420 S MAPLE GROVE ROAD

BOISE, ID 83709

LOCATION MAPS



LAND



INTERMOUNTAIN
COMMERCIAL REAL ESTATE

380 E. Parkcenter Boulevard
Suite 290
Boise, ID 83706
www.icrellc.com
(208) 429.8603 / office / (208) 429-8604 fax

LISTING AGENT:

Jim Hosac
jim@icrellc.com
o / 208.922.6681
c / 208.850.8470