

## Glacier Run Apartments & Residential Sites

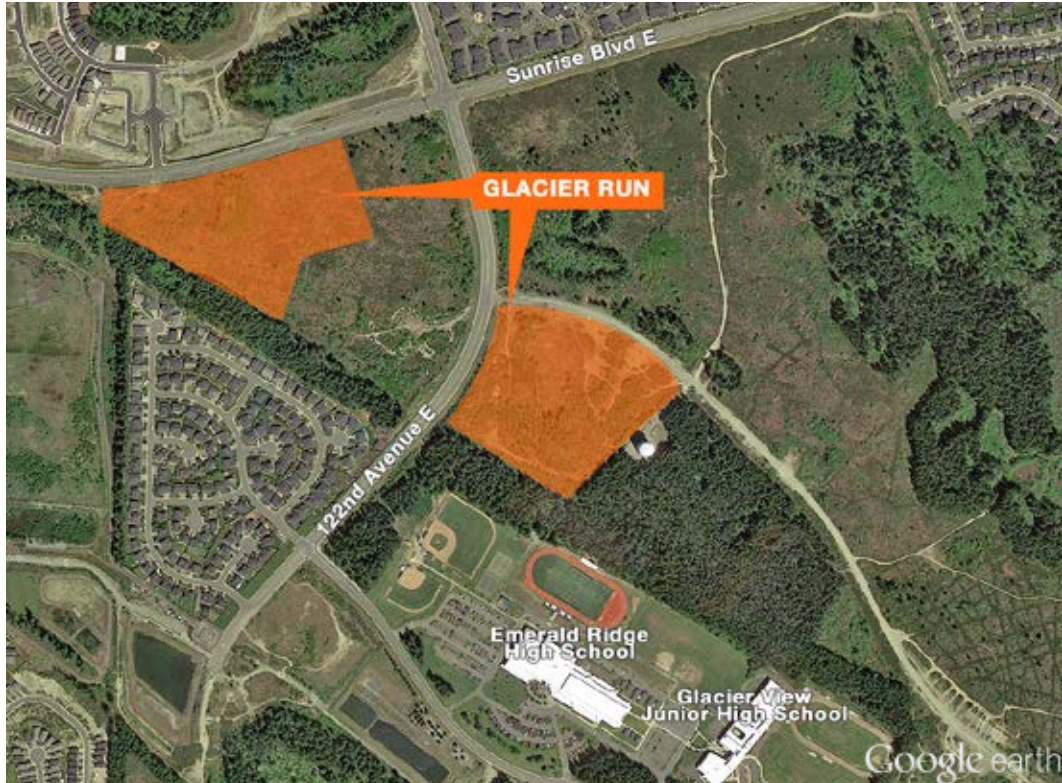
11800-11900 Sunrise Blvd & near 122nd Avenue E & Sunrise Blvd  
Puyallup, WA

1,684,901 SF (38.68 acres)

18.68 acre site with plans for 360+ apartments

Additional 20 acre site zoned moderate to high density residential

Parcel numbers: 9009020010, 9009020020 & 0419352009



### Location



### Contact

**Ted Sipila, CCIM**  
253.722.1421  
tsipila@kiddermathews.com

**D. Bruce Peart**  
425.450.1142  
bpeart@kiddermathews.com

**Arielle Dorman**  
425.450.1100  
adorman@kiddermathews.com