

Contact

Jon Angel, President Eva Kornreich, Vice President
203.335.6600, Ext. 21 20.335.6600, Ext. 23
jangel@angelcommercial.com ekornreich@angelcommercial.com

THE TRUSTED SOURCE FOR COMMERCIAL REAL ESTATE

12 Godfrey Place, Wilton, CT 06897

Wilton Center Commercial Condominium for Sale at ~~\$1,675,000~~ \$1,450,000 (\$160/RSF)



9,055 RSF Office Condominium in a modern three-story building on one acre available for sale. Condominium consists of three suites. Building features include elevator, generator, door access control system, handicap accessibility, UL listed monitored wet sprinkler system, individual suite security systems, street signage, and abundant on-site parking.

Enjoy the amenities and conveniences of this Wilton Center location. Walk to shops, restaurants, library and banks. Minutes to Wilton Train Station and Route 7, which provides convenient connections to both I-95 and the Merritt Parkway (Route 15). Just 22 miles to the Westchester Airport.

The Site

Space Available: 9,055 RSF in 3 Units
Garden Level: 2,353 RSF
First Floor: 2,836 RSF
Third Floor: 3,866 RSF
Total Building Size: 10,871 SF
Real Estate Taxes: \$50,146.40 (2020)
Zoning: WC (Wilton Center)
Year Built: 1985
Construction: Brick Veneer
Stories: 3
Tenancy: Multiple

One Mile Demographics

Population: 2,699
Median HH Income: \$129,126

Features

Parking: 53 Spaces in common
Amenities: Door Access Control System, UL Listed Monitored Wet Sprinkler System, Suite Security Systems for Each Occupant, Street Signage, Generator, Handicapped Accessible

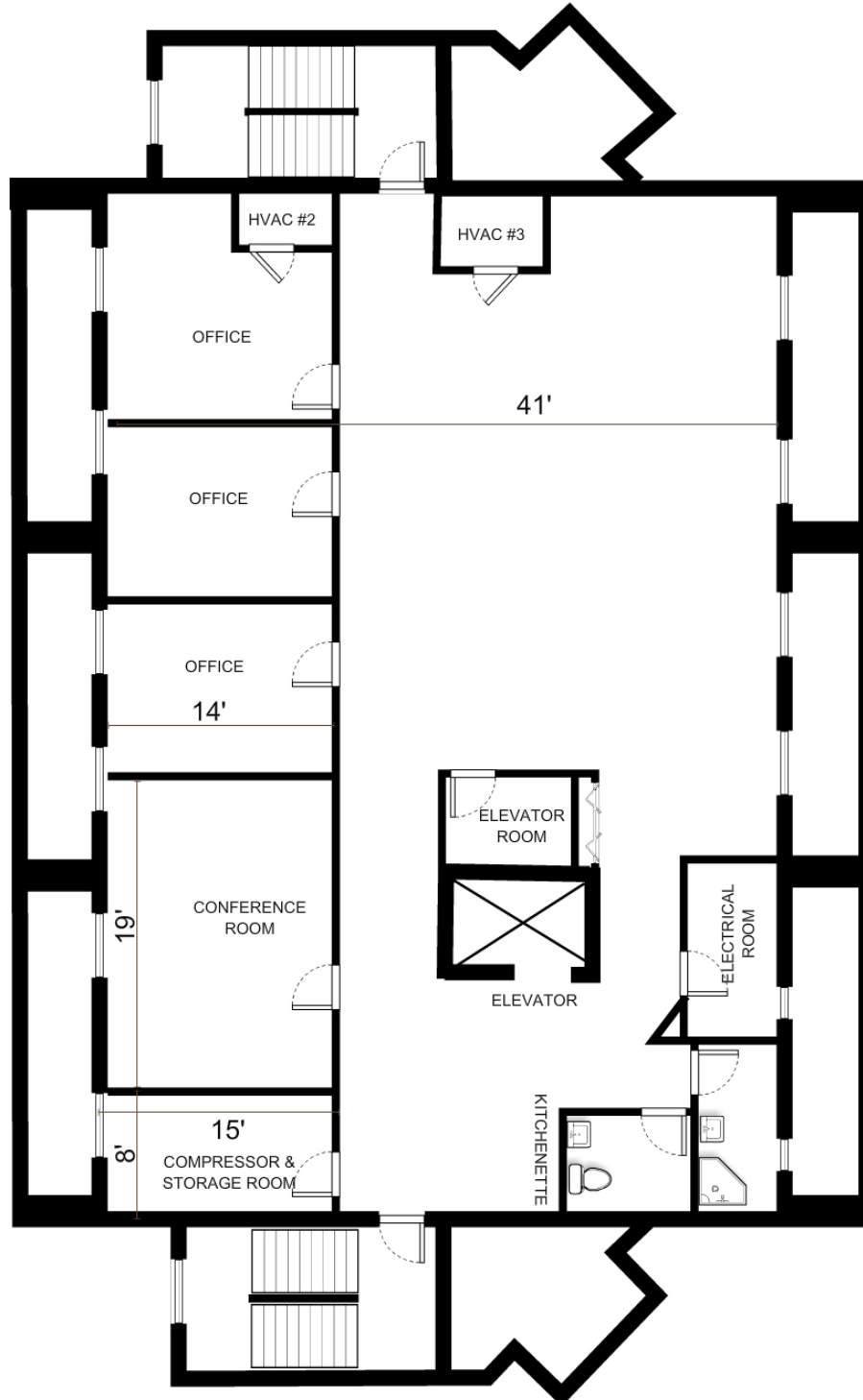
Utilities

Water/Sewer: City/City
Heating: Electric
A/C: Central Air-Conditioning

Three Mile Demographics

Population: 21,428
Median HH Income: \$175,599

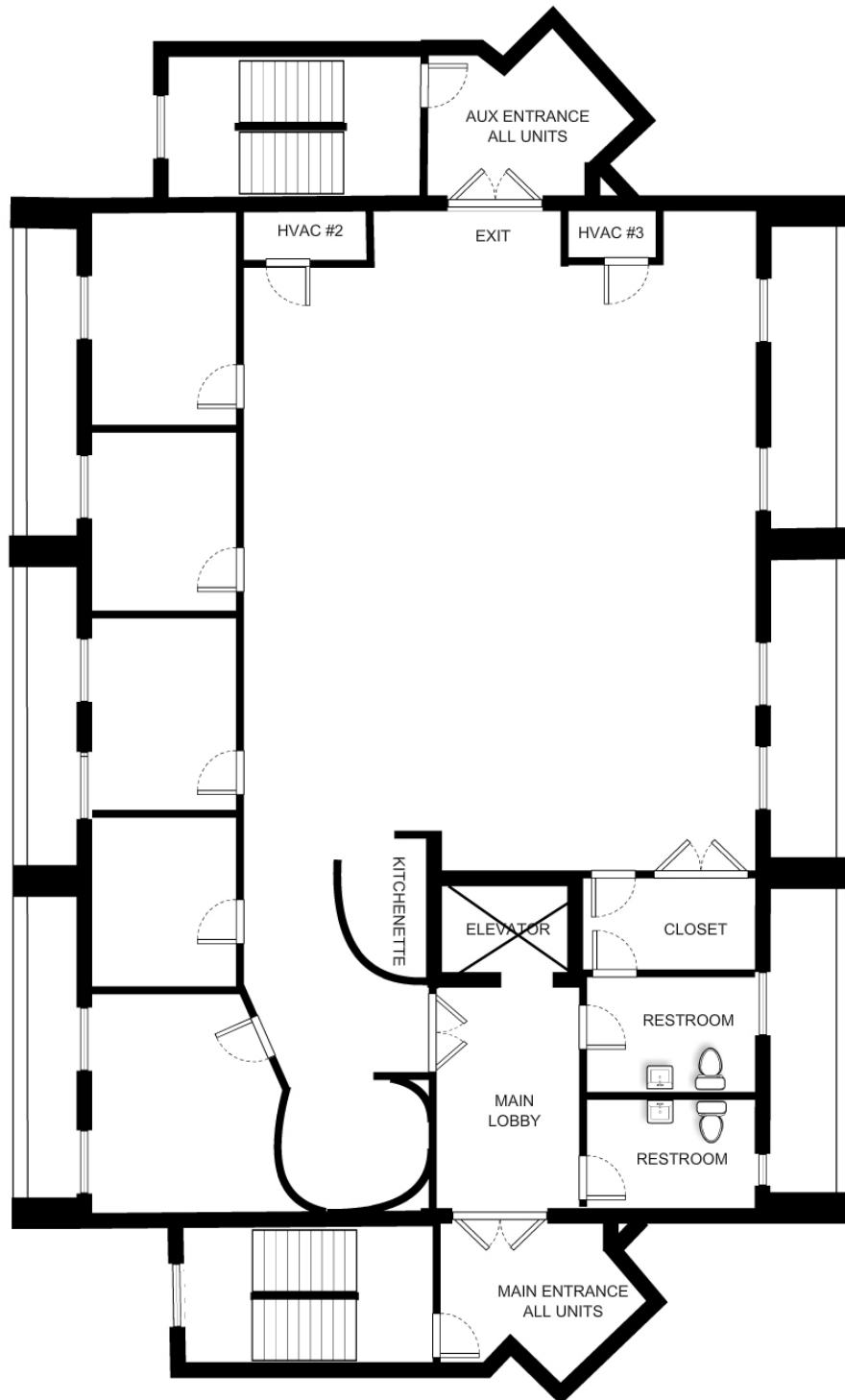
No warranty or representation, express or implied is made as to the accuracy of the information contained herein, and same is submitted subject to errors, omissions, change of price, rental or other conditions, withdrawal without notice and to any special listing conditions imposed by our principals.



Contact:
Jon Angel, President
203.335.6600, Ext. 21
jangel@angelcommercial.com

Eva Kornreich, Vice President
203.335.6600, Ext. 23
ekornreich@angelcommercial.com

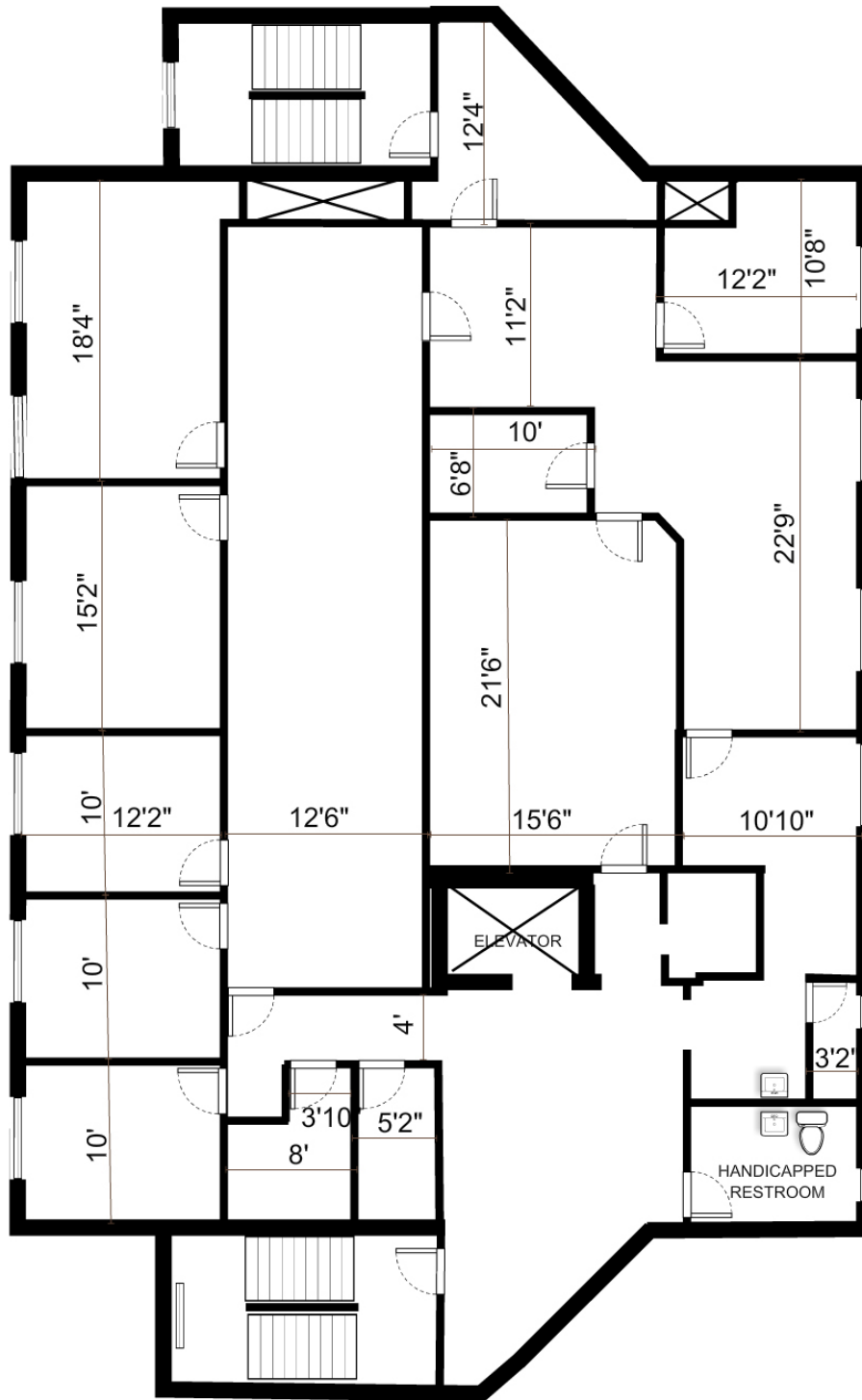




Contact:
Jon Angel, President
203.335.6600, Ext. 21
jangel@angelcommercial.com

Eva Kornreich, Vice President
203.335.6600, Ext. 23
ekornreich@angelcommercial.com





Contact:
Jon Angel, President
203.335.6600, Ext. 21
jangel@angelcommercial.com

Eva Kornreich, Vice President
203.335.6600, Ext. 23
ekornreich@angelcommercial.com

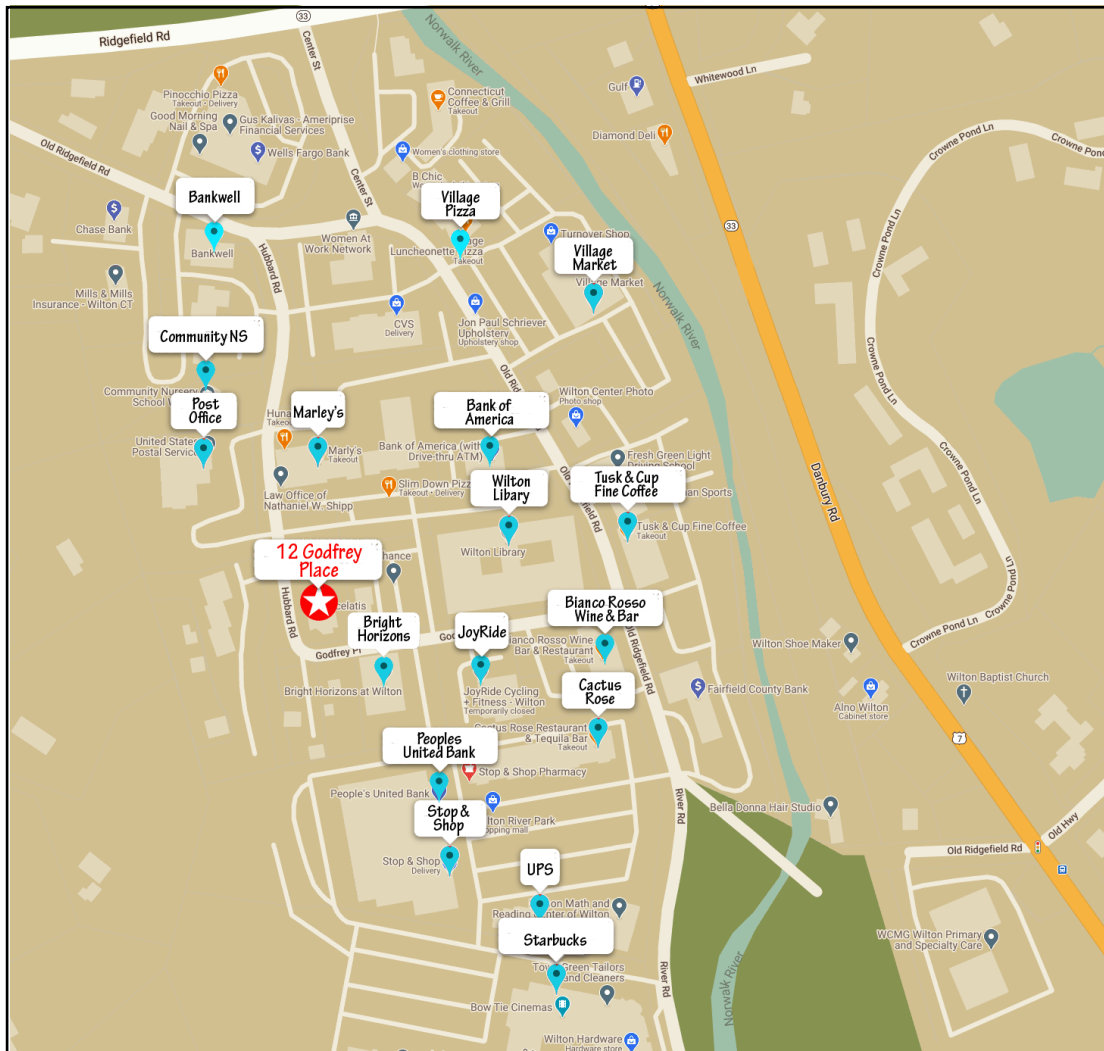


For Sale

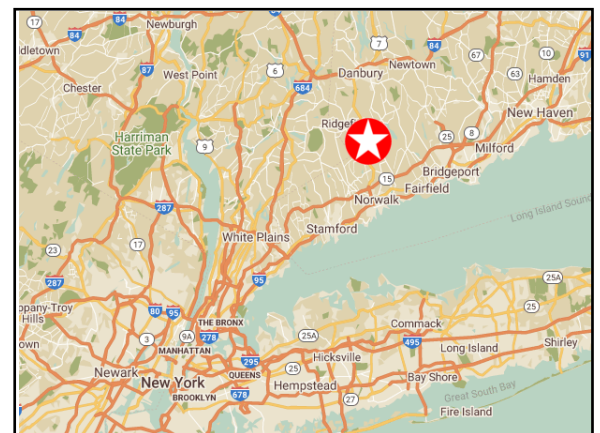
Location Map

12 Godfrey Place

Wilton, Connecticut 06897



Enjoy the amenities and conveniences of this Wilton Center location. Walk to shops, restaurants, library and banks. Minutes to Wilton Train Station and Route 7, which provides convenient connections to both I-95 and the Merritt Parkway (Route 15). Just 22 miles to the Westchester Airport.



Contact:

Jon Angel, President
203.335.6600, Ext. 21
jangel@angelcommercial.com

Eva Korreich, Vice President
203.335.6600, Ext. 23
ekorreich@angelcommercial.com



2425 POST ROAD, SUITE 303, SOUTHPORT, CT 06890 • TEL 203.335.6600 • FAX 203.335.9900 • WWW.ANGELCOMMERCIAL.COM

No warranty or representation, express or implied is made as to the accuracy of the information contained herein, and same is submitted subject to errors, omissions, change of price, rental or other conditions, withdrawal without notice and to any special listing conditions imposed by our principals.