



Southside Indianapolis Industrial/Flex Building



6337 E Hanna Ave Indianapolis, IN 46203

Keith Dedrick SIOR, CCIM
keith@ccgbrokers.com

317.818.1231
317.502.3622 cell

11495 N Pennsylvania St. Suite 225 Carmel, IN 46032
www.corporatecommercialgroup.com



6337 E Hanna Ave
Indianapolis, IN 46203



Property Details

| | | | |
|-----------------------|-------------------|------------------------|------------------------|
| Asking Price: | \$795,000 | Building Type: | Industrial/Flex |
| Total SF: | 6,320 SF | Year Built: | 2011 |
| Total Acreage: | 7.00 Acres | Ceiling Height: | 12' |
| Apartment SF: | 800 SF | County: | Marion |
| Zoned: | D-4 | Annual Taxes: | \$9,992 |



Keith Dedrick SIOR, CCIM
keith@ccgbrokers.com

317.818.1231
317.502.3622 (cell)

11495 N Pennsylvania St. Suite 225 Carmel, IN 46032



6337 E Hanna Ave
Indianapolis, IN 46203



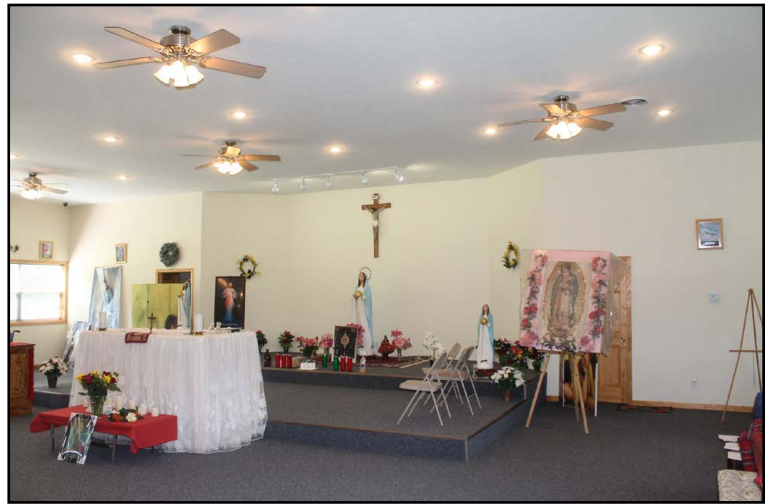
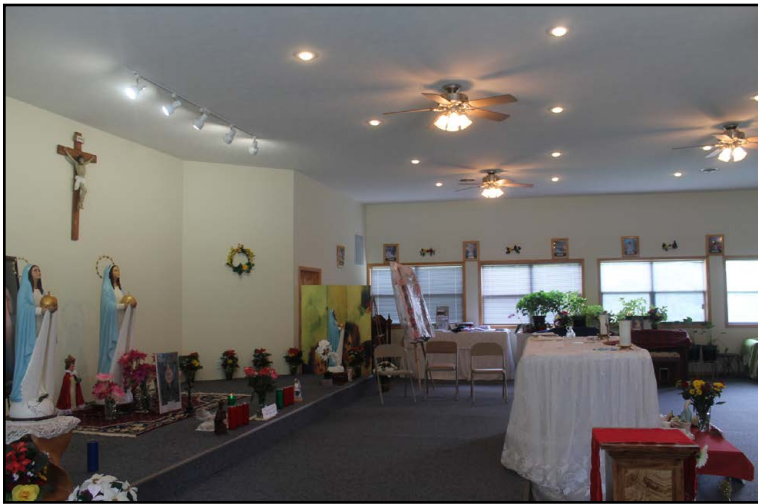
Keith Dedrick SIOR, CCIM
keith@ccgbrokers.com

317.818.1231
317.502.3622 (cell)

11495 N Pennsylvania St. Suite 225 Carmel, IN 46032



6337 E Hanna Ave
Indianapolis, IN 46203



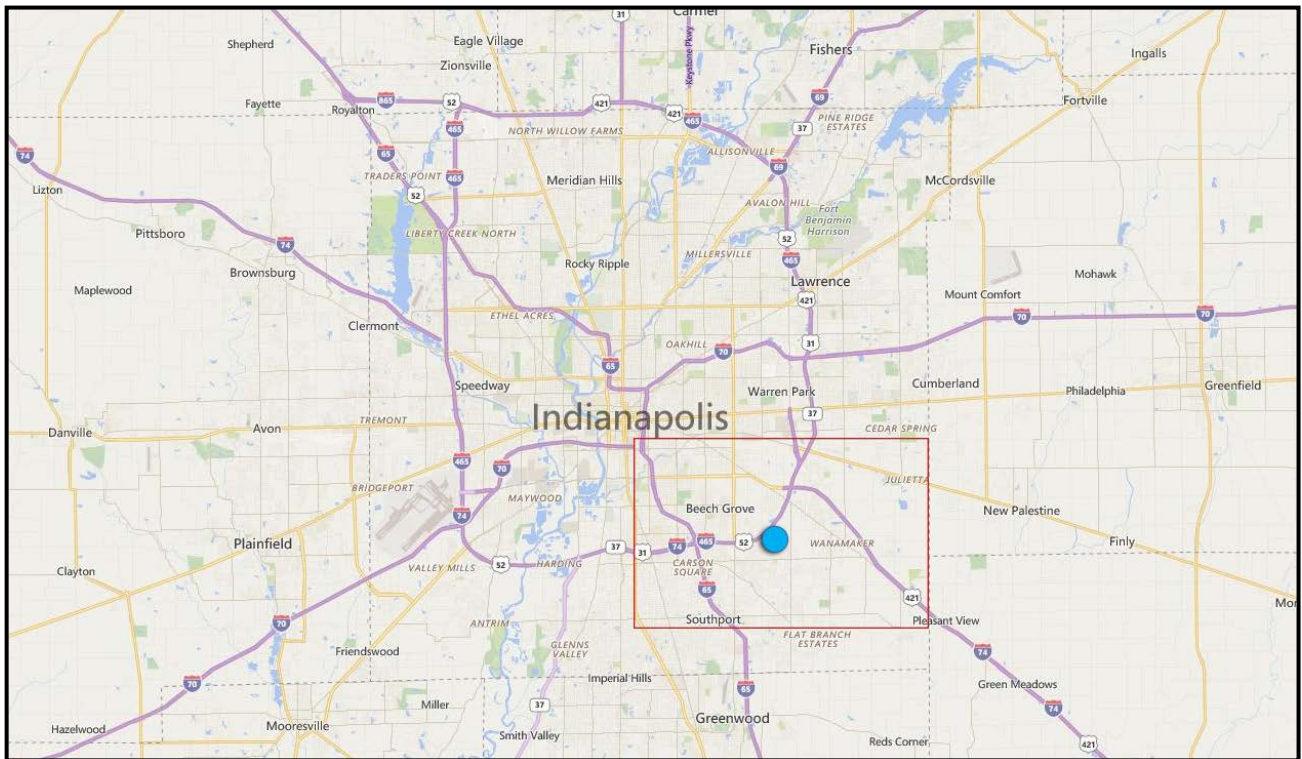
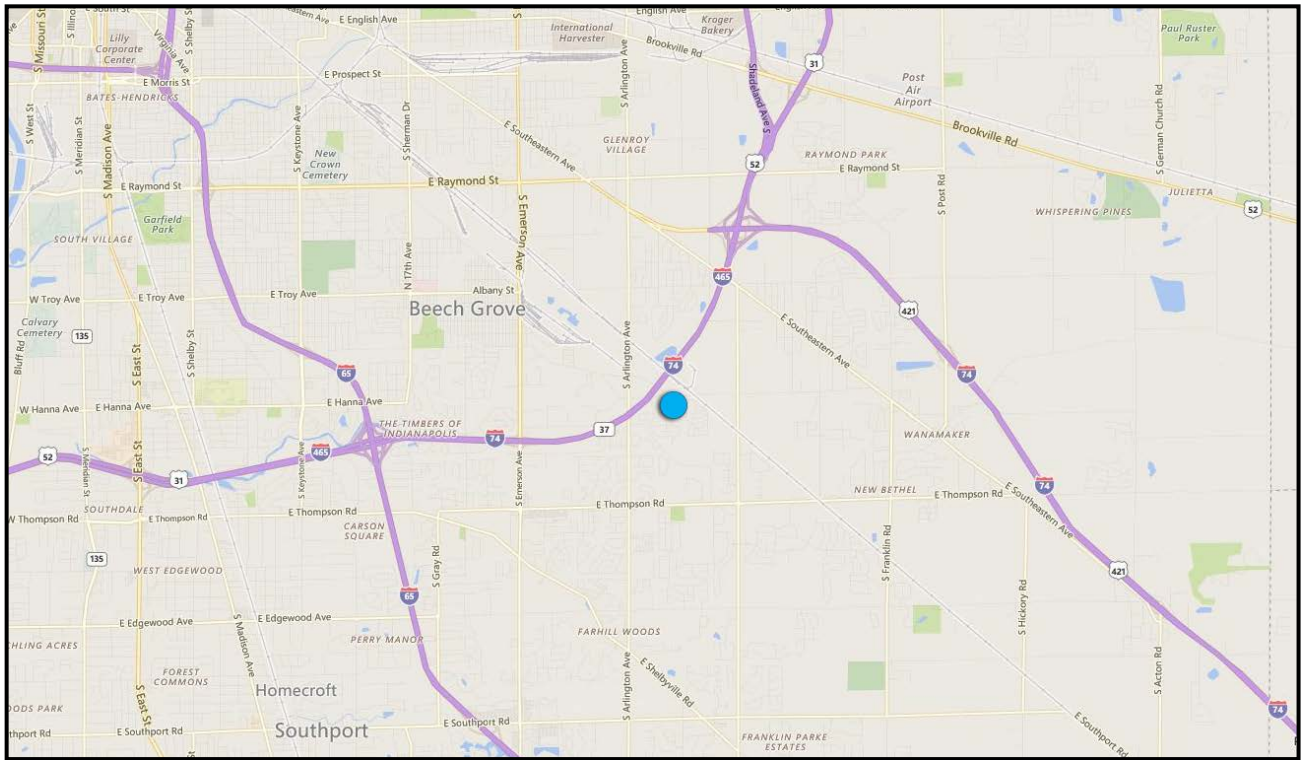
Keith Dedrick SIOR, CCIM
keith@ccgbrokers.com

317.818.1231
317.502.3622 (cell)

11495 N Pennsylvania St. Suite 225 Carmel, IN 46032



6337 E Hanna Ave Indianapolis, IN 46203



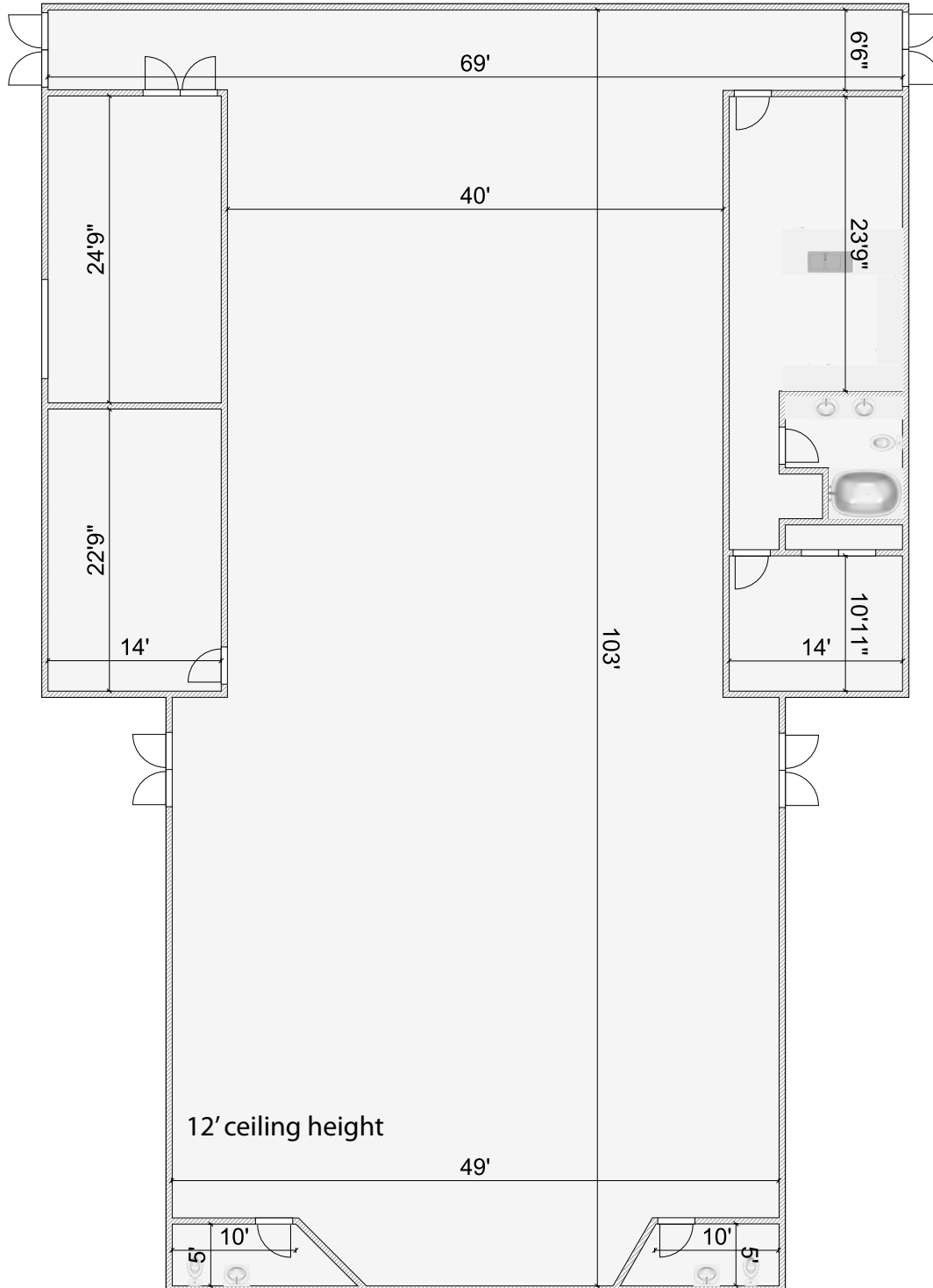
Keith Dedrick SIOR, CCIM
keith@ccgbrokers.com

317.818.1231
317.502.3622 (cell)

11495 N Pennsylvania St. Suite 225 Carmel, IN 46032



6337 E Hanna Ave
Indianapolis, IN 46203



Keith Dedrick SIOR, CCIM
keith@ccgbrokers.com

317.818.1231
317.502.3622 (cell)

11495 N Pennsylvania St. Suite 225 Carmel, IN 46032



| Measure | 1 Mile Radius | 3 Mile Radius | 5 Mile Radius |
|----------------------------|---------------|---------------|---------------|
| Population 2017 | 6,619 | 64,820 | 175,267 |
| Households 2017 | 2,456 | 24,466 | 67,293 |
| Ave. Household Size 2017 | 2.70 | 2.63 | 2.56 |
| Ave. Household Income 2017 | \$58,818 | \$68,696 | \$62,976 |