

INDUSTRIAL BUILDING FOR LEASE

6567 BRISA STREET, LIVERMORE

LISTING DATA

BUILDING SIZE: 32,199±SF
LOT SIZE: 1.5± acres
AVAILABLE: February 1, 2018

PROPERTY INFORMATION:

7,881±SF of Air Conditioned Area

- 6,333±SF of two story office
- 1,548±SF of flex space

22,856±SF of Warehouse Area

- 24'± clear height
- Skylights
- Four (4) docks and two (2) grade level doors
- Zoned I-3 (heavy industrial)
- 1200 AMPS, 208/110 V, 3 Phase
- 52 parking spots
- Column width: 54' x 24'

ECONOMIC DATA

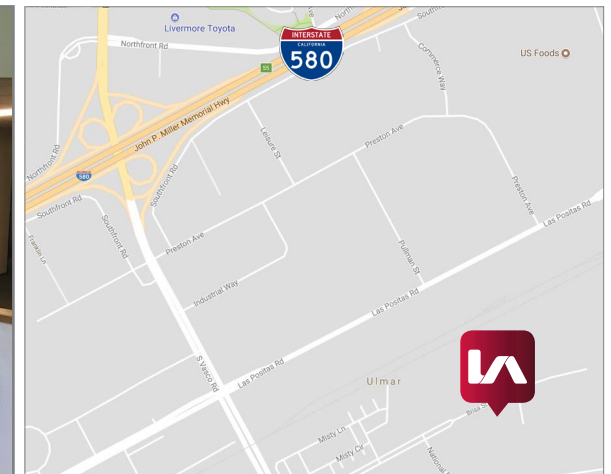
LEASE RATE: \$0.90/SF NNN (\$28,979.10)

OPERATING EXPENSES: \$0.20/SF (\$6,596.01)

**DO NOT DISTURB TENANT
CALL BROKERS TO TOUR**

Mark Pleis
mpleis@lee-associates.com
D 925.737.4148

Hunter Steffien
hsteffien@lee-associates.com
D 925.737.4154



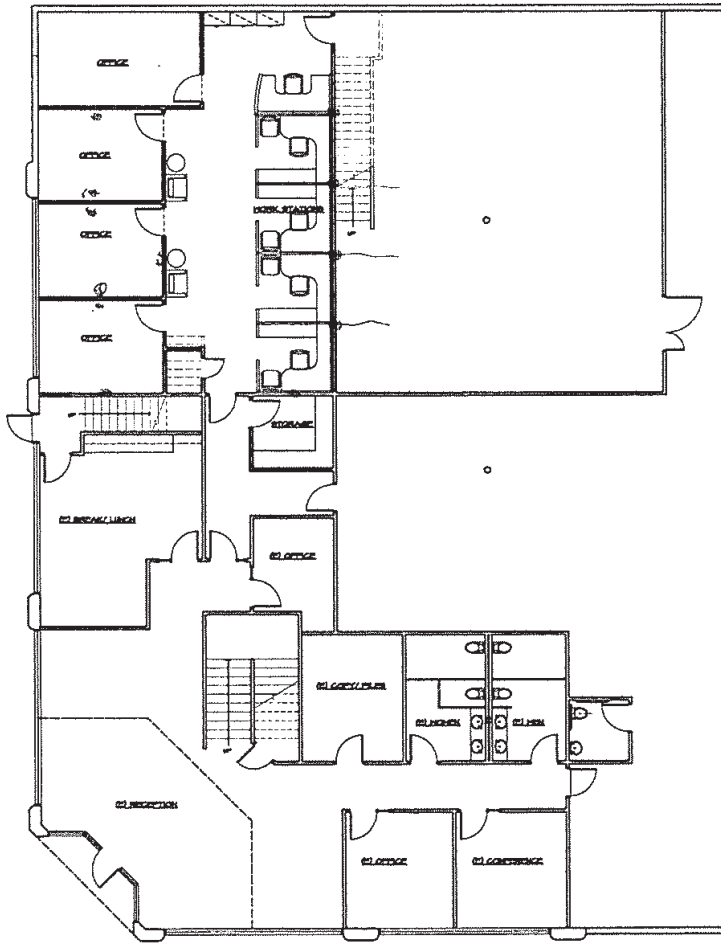
All information furnished regarding property for sale, rental or financing is from sources deemed reliable, but no warranty or representation is made to the accuracy thereof and same is submitted to errors, omissions, change of price, rental or other conditions prior to sale, lease or financing or withdrawal without notice. No liability of any kind is to be imposed on the broker herein.

INDUSTRIAL BUILDING FOR LEASE

6567 BRISA STREET, LIVERMORE

FLOOR PLANS & BUILDING PHOTOS:

First Floor



Second Floor

