



Richard Higgins

Managing Director
 Lic. # 00833037
 rhiggins@charlesdunn.com
 Direct (310) 492-8408
 Office (310) 312-1800
 Fax (310) 312-1801

Michel Hibbert

Senior Managing Director
 Lic. # 00893133
 mhibbert@charlesdunn.com
 Direct (310) 996-2235
 Office (310) 312-1800
 Fax (310) 312-1801

Dan Johnson

Associate
 Lic. # 01905254
 djohnson@charlesdunn.com
 Direct (310) 492-8409
 Office (310) 312-1800
 Fax (310) 312-1801

Charles Dunn Company
 1925 Century Park E, Suite
 2350
 Los Angeles, CA 90067
 Lic. #01201641

Charles Dunn

Office Space For Sale

**2500-2504 Pacific Coast Highway
 Torrance, CA 90505**

Property Facts

Purchase Price (2500 PCH).....	\$2,000,000
Purchase Price (2504 PCH).....	\$500,000
Price Per SF.....	\$314.07
Building Size.....	6,368
Year Built.....	1977
Parking.....	22 spaces
Ratio (Combined Lots).....	5.8:1,000

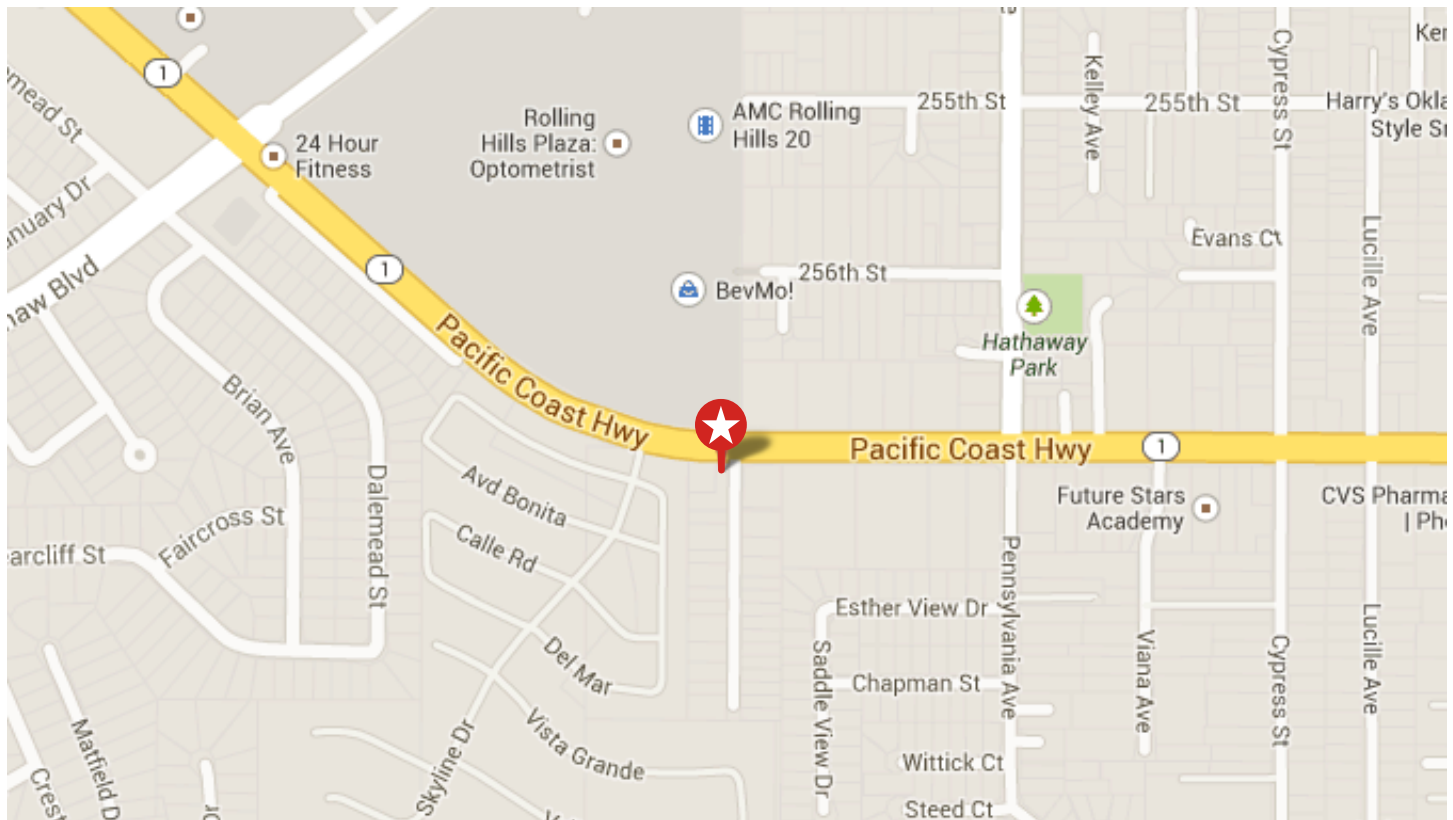
Property Features

Great location for a CPA firm or attorney's office. Close to a number of amenities with easy access to the beach cities and the greater Torrance area. An adjacent separate parcel is also available for \$500,000 to supply excess parking for a medical use or for additional space requirements. Within five minutes of Torrance Memorial Hospital.

2500-2504 Pacific Coast Hwy, Torrance, CA 90505

Property Map

Great Torrance location within walking distance to Torrance Towne Center and Rolling Hills Plaza. These retail projects draw residents from Palos Verdes Peninsula, Torrance, and all of the beach cities. The building is situated in a transitional location between the cities of Torrance and Lomita. There are a number of retail users in the immediate vicinity as well as office space.



These materials are based on information and content provided by others which we believe are accurate. No guarantee, warranty or representation is made by the Charles Dunn Company or its personnel, and all interested parties must independently verify its accuracy and completeness. As well, any projections, assumptions, opinion, or estimates are used for example only and do not represent the current or future performance of the identified property. Your tax, financial, legal and toxic substance advisors should conduct a careful investigation of the property and its suitability for your needs, including land use limitations. The property is subject to prior lease, sale, change in price, or withdrawal from the market without notice.
Charles Dunn Company 800 West 6th Street, 5th Fl, Los Angeles, CA 90017 Lic. # 01201641

2500-2504 Pacific Coast Hwy, Torrance, CA 90505

Property Photos



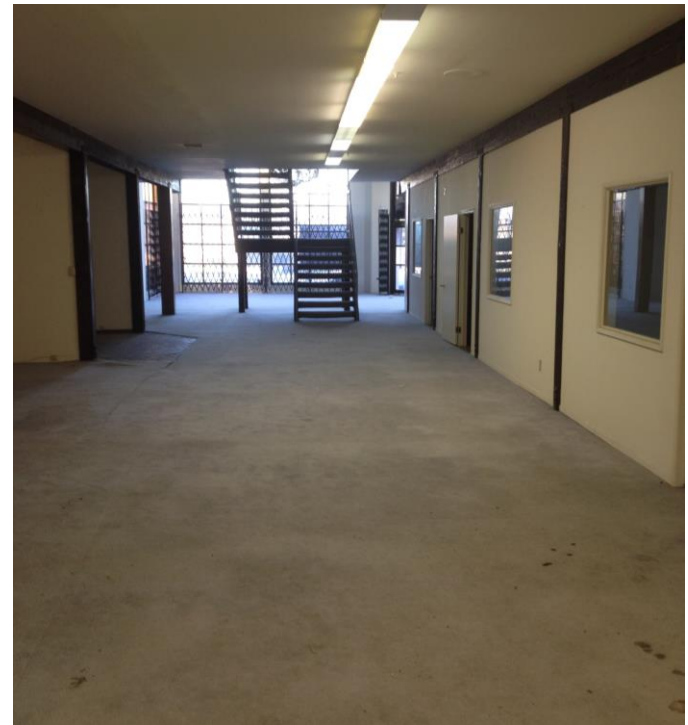
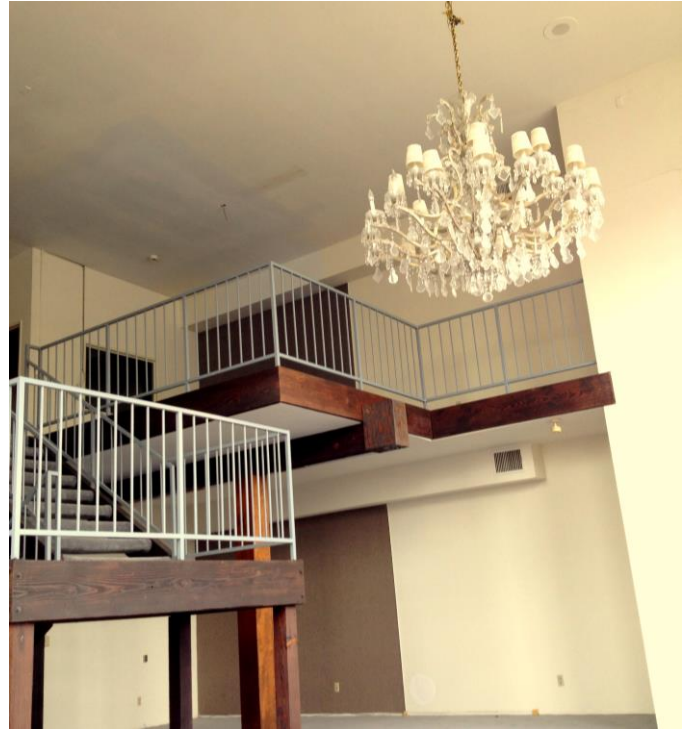
These materials are based on information and content provided by others which we believe are accurate. No guarantee, warranty or representation is made by the Charles Dunn Company or its personnel, and all interested parties must independently verify its accuracy and completeness. As well, any projections, assumptions, opinion, or estimates are used for example only and do not represent the current or future performance of the identified property. Your tax, financial, legal and toxic substance advisors should conduct a careful investigation of the property and its suitability for your needs, including land use limitations. The property is subject to prior lease, sale, change in price, or withdrawal from the market without notice.

Charles Dunn Company 800 West 6th Street, 5th Fl, Los Angeles, CA 90017 Lic. # 01201641

H:1Data/1Admin/02/2500-04Pacific Coast Hwy Setup-[1.23.14-dj]

2500-2504 Pacific Coast Hwy, Torrance, CA 90505

Property Photos



These materials are based on information and content provided by others which we believe are accurate. No guarantee, warranty or representation is made by the Charles Dunn Company or its personnel, and all interested parties must independently verify its accuracy and completeness. As well, any projections, assumptions, opinion, or estimates are used for example only and do not represent the current or future performance of the identified property. Your tax, financial, legal and toxic substance advisors should conduct a careful investigation of the property and its suitability for your needs, including land use limitations. The property is subject to prior lease, sale, change in price, or withdrawal from the market without notice.

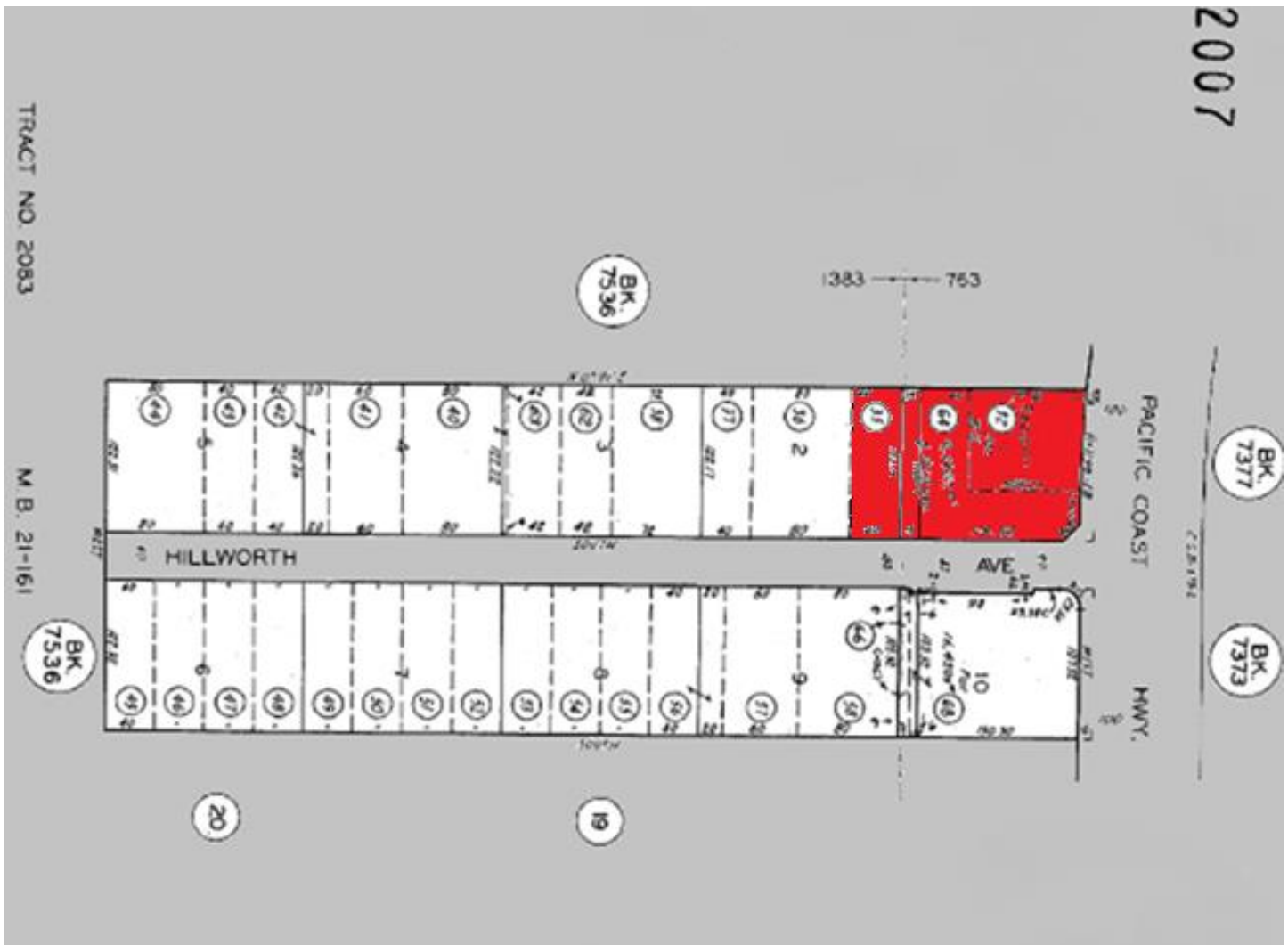
Charles Dunn Company 800 West 6th Street, 5th Fl, Los Angeles, CA 90017 Lic. # 01201641

H:1Data\1Admin\02\2500-04Pacific Coast Hwy Setup-[1.23.14-dj]

2500-2504 Pacific Coast Hwy, Torrance, CA 90505

Plat Map

Building Size: 6,368
Lot Size (2500): 15,107 (combined)
Lot Size (2504): 7,714
APN (2500): 7553-021-064,
7553-021-035
APN (2504): 7553-021-032



2500-2504 Pacific Coast Hwy, Torrance, CA 90505

Contacts



Richard Higgins

Managing Director
Lic. # 00833037
rhiggins@charlesdunn.com
Direct (310) 492-8408
Office (310) 312-1800
Fax (310) 312-1801



Michel Hibbert, CCIM

Senior Managing Director
Lic. # 00893133
mhibbert@charlesdunn.com
Direct (310) 996-2235
Office (310) 312-1800
Fax (310) 312-1801



Dan Johnson

Associate
Lic. # 01905254
djohnson@charlesdunn.com
Direct (310) 492-8409
Office (310) 312-1800
Fax (310) 312-1801