

PRIME GROUND FLOOR RETAIL SPACE ON BEST BLOCK IN MISSION DISTRICT

RETAIL SPACE FOR LEASE | GROUND FLOOR

2620 MISSION STREET, SAN FRANCISCO, CA 94110 | MISSION DISTRICT



VIRTUAL TOUR AVAILABLE! CLICK HERE!

PRICE: \$5,500 PER MONTH

NET CHARGES: YES

NEIGHBORHOOD: MISSION DISTRICT
BETWEEN 22ND & 23RD STREETS

SPACE SIZE AVAILABLE

±2,500 SF

RETAIL SPACE FOR LEASE

NOW AVAILABLE FOR LEASE

**EXCELLENT BRANDING EXPERIENCE WITH
HIGHLY VISIBLE SIGNAGE**

Enjoy a fabulous location on one of the best blocks in the vibrant Mission District. High vehicular and pedestrian traffic. On Muni Bus Line and close proximity to 24th Street BART Station.

- One-story retail space
- On same block as US Bank, Game Stop, Walgreens, Verizon, Payless, Sprint, Sketchers and more
- One block from popular Alamo Drafhhouse Theatre, top ranked restaurant Foreign Cinema, Wells Fargo and more



INCORPORATED | EST. 1922

This Statement with the information it contains is given with the understanding that all negotiations relating to the purchase, renting or leasing of the property described above shall be conducted through Blatteis Realty Company. The above information, while not guaranteed, has been secured from sources believed to be reliable. Blatteis Realty has not verified its accuracy and make no guarantees, warranty or representation regarding this information and it is published subject to the possibility of errors, omissions, changes of listing information including price, term, financing, or withdrawal without notice. We include projections, estimates, opinions and/or assumptions, for example only, and they may not represent current or future performance of the property. You should consult your tax and legal advisors before to verify the validity of estimates.

DAVID BLATTEIS

415.321.7488 | db@brsf.co | DRE #00418305

sfretail.net

INTERIOR



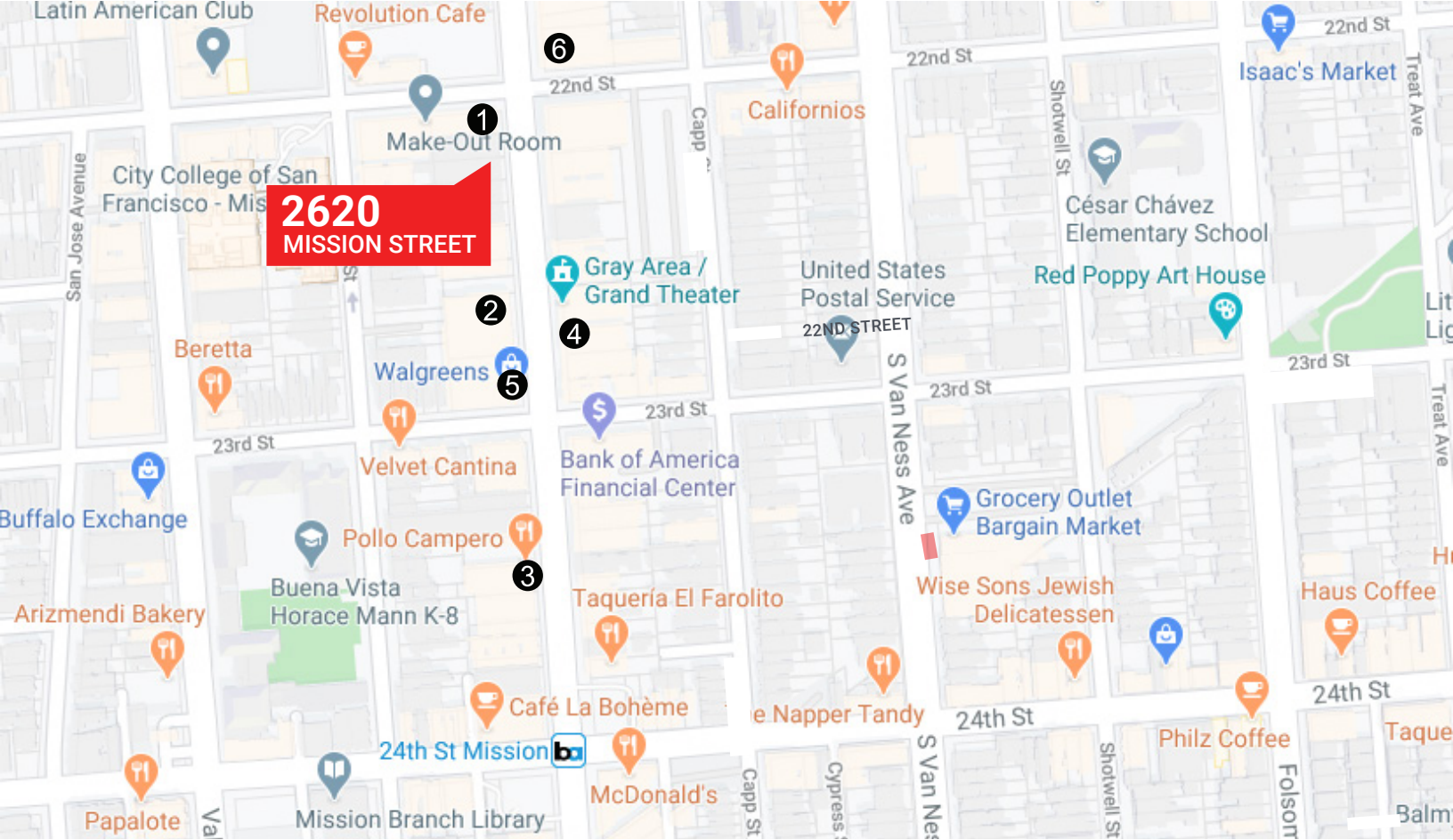
INCORPORATED | EST. 1922

This Statement with the information it contains is given with the understanding that all negotiations relating to the purchase, renting or leasing of the property described above shall be conducted through Blatteis Realty Company. The above information, while not guaranteed, has been secured from sources believed to be reliable. Blatteis Realty has not verified its accuracy and make no guarantees, warranty or representation regarding this information and it is published subject to the possibility of errors, omissions, changes of listing information including price, term, financing, or withdrawal without notice. We include projections, estimates, opinions and/or assumptions, for example only, and they may not represent current or future performance of the property. You should consult your tax and legal advisors before to verify the validity of estimates. All commercial or mixed-use property presented by Blatteis Realty is subject to local zoning codes and regulations. It is the sole responsibility and liability of tenants and property owners to obtain all applicable required building permits and/or certificates from the local city/town Planning Department before commercial property use can commence or a building can be built.

LUCIA J. YOON

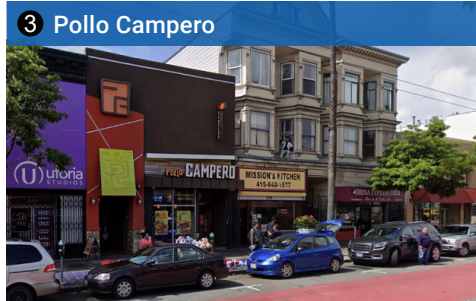
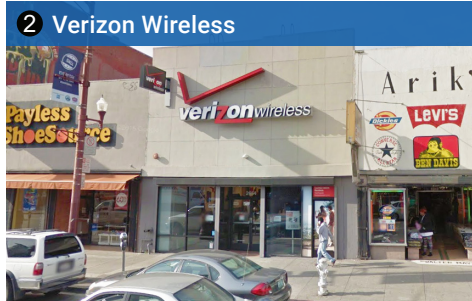
415.321.7485 | ly@brsf.co | DRE #01901890

sfretail.net



● Popular Nearby Tenants

POPULAR NEARBY TENANTS



INCORPORATED | EST. 1922

This Statement with the information it contains is given with the understanding that all negotiations relating to the purchase, renting or leasing of the property described above shall be conducted through Blatteis Realty Company. The above information, while not guaranteed, has been secured from sources believed to be reliable. Blatteis Realty has not verified its accuracy and make no guarantees, warranty or representation regarding this information and it is published subject to the possibility of errors, omissions, changes of listing information including price, term, financing, or withdrawal without notice. We include projections, estimates, opinions and/or assumptions, for example only, and they may not represent current or future performance of the property. You should consult your tax and legal advisors before to verify the validity of estimates.

DAVID BLATTEIS

415.321.7488 | db@brsf.co | DRE #00418305

sfretail.net