



ENTIRE 6TH, 7TH, 8TH, 9TH FLOORS
13,300 RENTABLE SQUARE FEET ON EACH FLOOR
53,200 RSF TOTAL

POSSESSION: Arranged // TERM: Through October 2024 // RENT: Negotiable

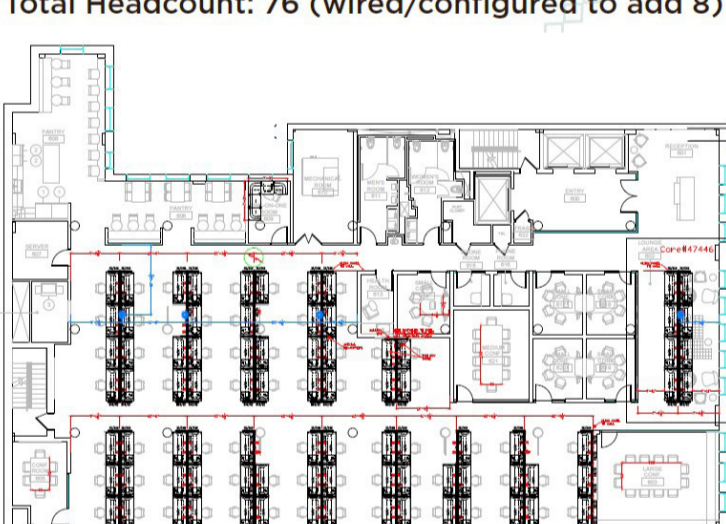
PRIME UNION SQUARE LOCATION OPEN FLOOR

PLAN IDEAL FOR HIGH DENSITY TAMI USERS

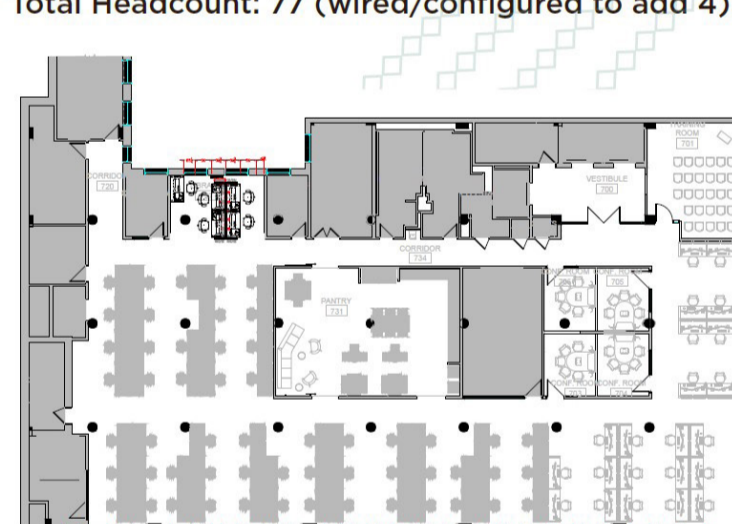
FURNITURE AVAILABLE



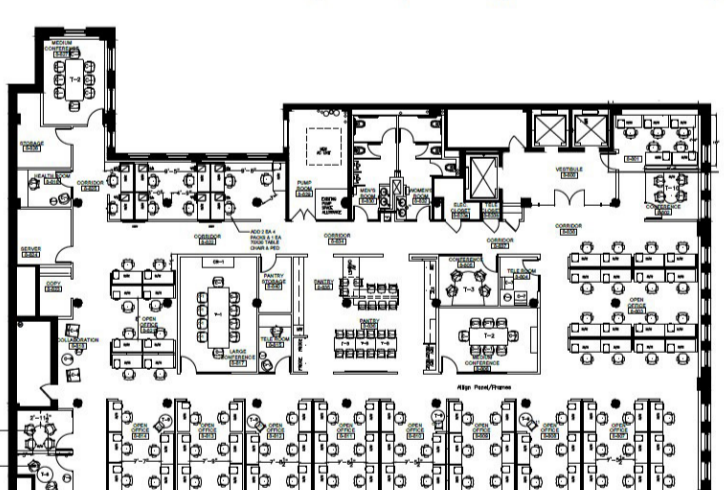
6TH FLOOR: 13,300 RSF
 Total Headcount: 76 (wired/configured to add 8)



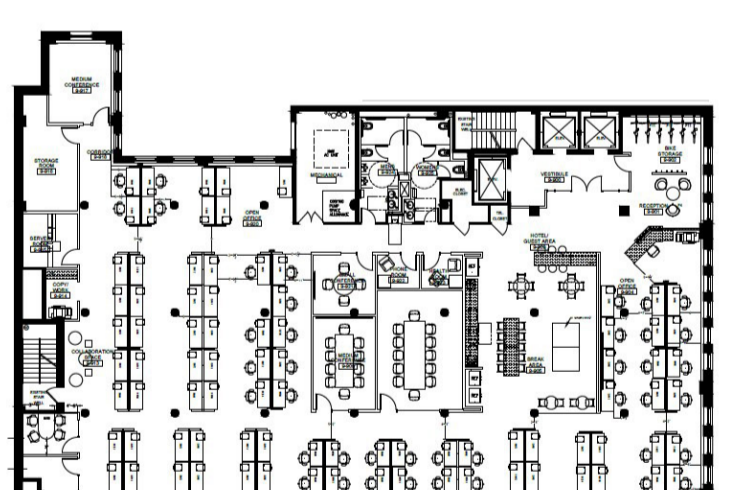
7TH FLOOR: 13,300 RSF
 Total Headcount: 77 (wired/configured to add 4)



8TH FLOOR: 13,300 RSF
 Total Headcount: 80 (wired/configured to add 5)



9TH FLOOR: 13,300 RSF
 Total Headcount: 91



FOR MORE INFORMATION, PLEASE CONTACT:

JUSTIN HALPERN
 212-841-7543
 justin.halpern@cushwake.com

EDWARD WARTELS
 212-841-7541
 ed.wartels@cushwake.com

JACK ORTLIEB
 212-841-7975
 jack.ortlieb@cushwake.com



A full commission computed and earned in accordance with the rates and conditions of our agency agreement with our principal, when received from our principal, will be paid to the cooperating broker who consummates a lease which is unconditionally executed and delivered by and between lessor and lessee (a copy of the rates and conditions referred to above is available upon request).