



BASCOM  
— STATION —



# Connecting Your Worlds

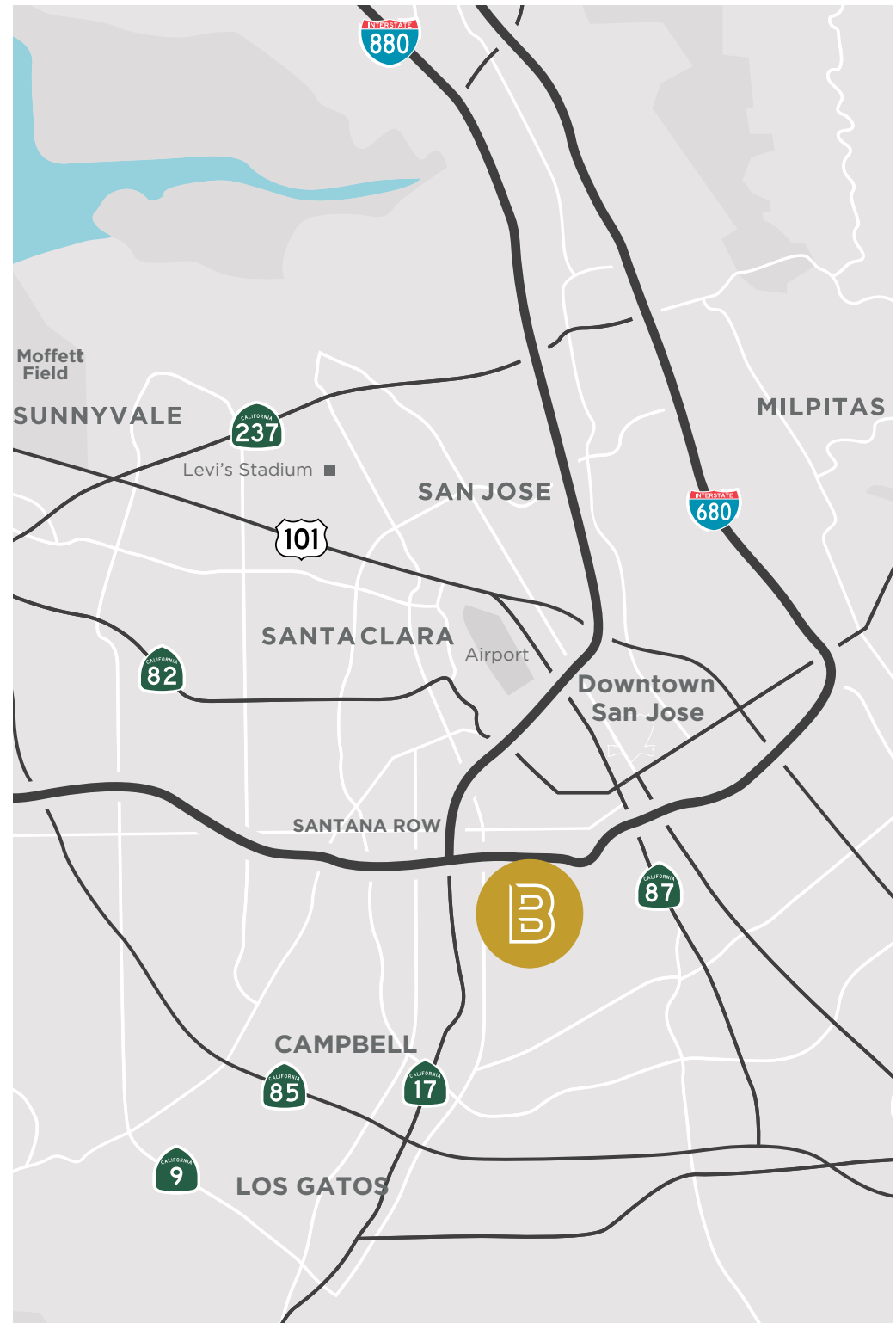
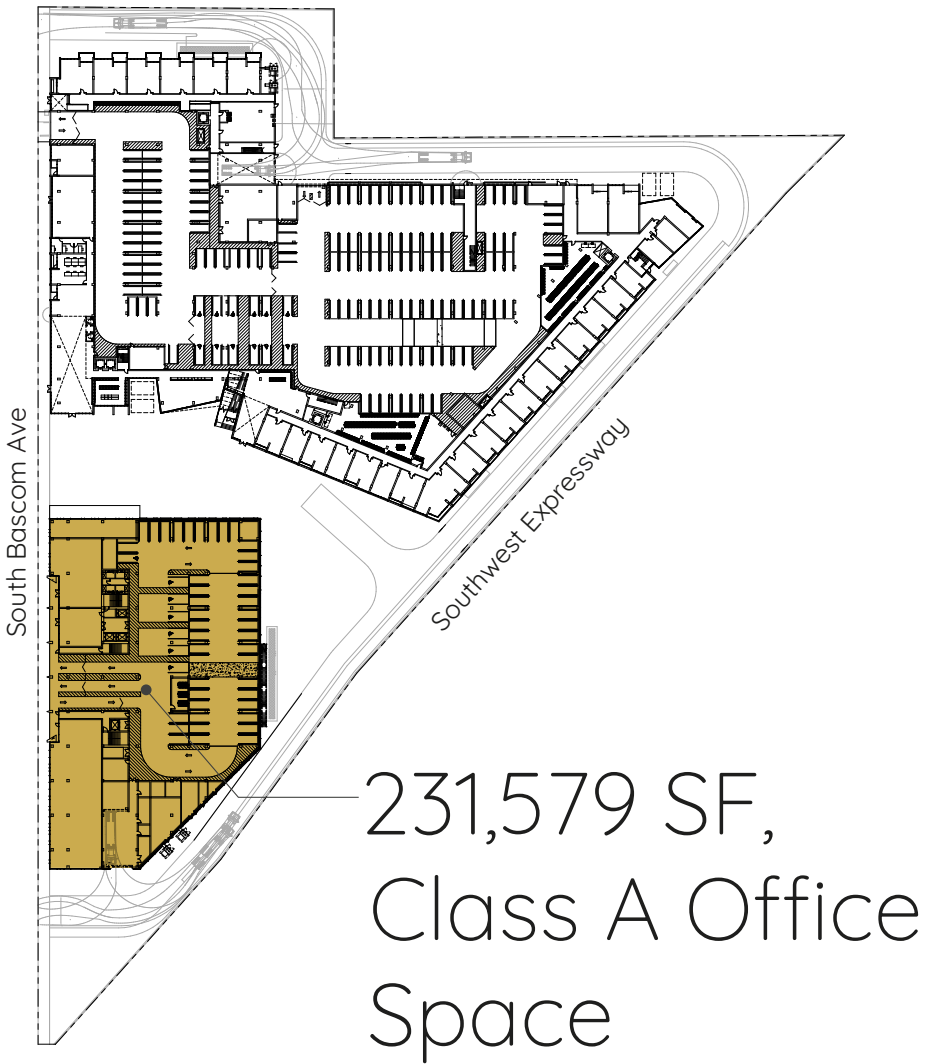
## 1410 S Bascom Ave, San Jose, CA

Bascom Station features 231,579 SF, 10 stories of premier Class A office space with 590 residential units on site. Located at the intersection of downtown San Jose, Campbell, Santana Row and Willow Glen, this urban area is known for its vast array of retail, dining and entertainment options, from award-winning restaurants to cafés and local boutiques.

Adjacent to Bascom Light Rail Station, and easily accessed by Interstate 880, 280 & Highway 85 Bascom Station provides unmatched connectivity to the area's talented workforce. Featuring outdoor terraces, underground/podium parking, and premier building visibility, everything you need is at your fingertips - Connecting Your Worlds.



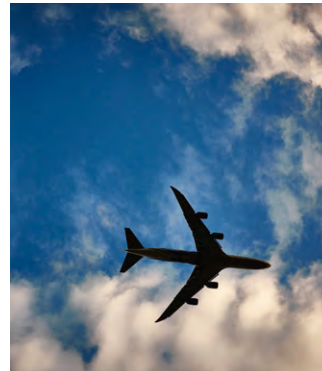
# Site Plan & Location





# Building Highlights

- › 231,579 SF Class A Headquarters Building
- › 10-Stories
- › 590 Residential Units
- › Q2 2022 Delivery
- › Progressive Concrete Construction
- › Terraces on Each Floor
- › 13'4"-18' Clear Heights
- › Floor Plates ranging from ±20,686 SF to ±37,769 SF
- › Monument & Building Signage
- › EV Charging Stations
- › 4,000 Amps at 277/480 V of Power
- › Adjacent to Bascom Light Rail Station
- › 7 Minutes on Light Rail to Diridon Caltrain Station
- › Less than 1 Mile to Pruneyard
- › 10 Minute Bike Ride to Downtown Campbell
- › 5 Minute drive to Downtown Willow Glen
- › ½ Mile to Whole Foods



"Whole Foods Markham Canada" by ChadPerez49, licensed under CC BY-SA 4.0.

## Great Proximity to Restaurants & Amenities





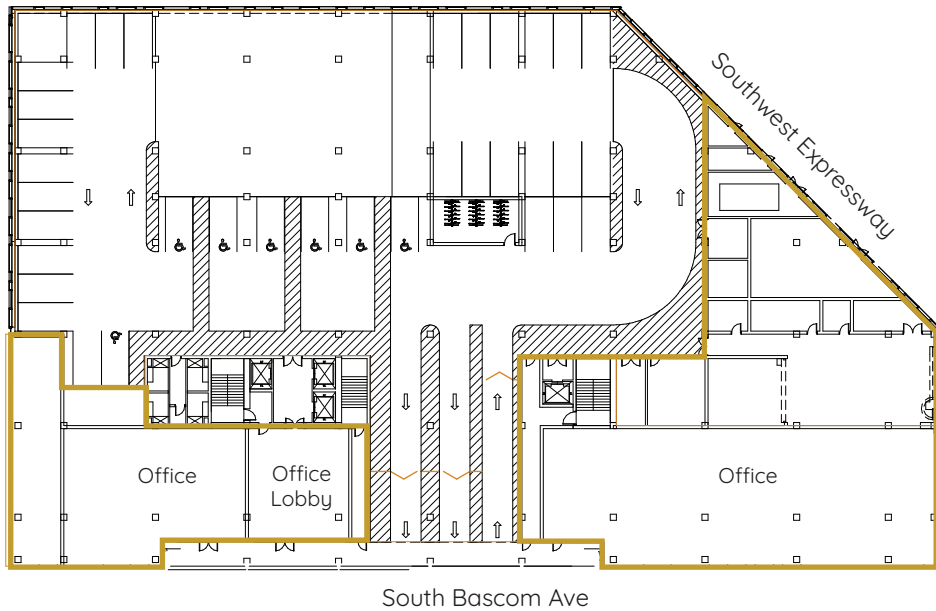


# 590 Residential Units on Site



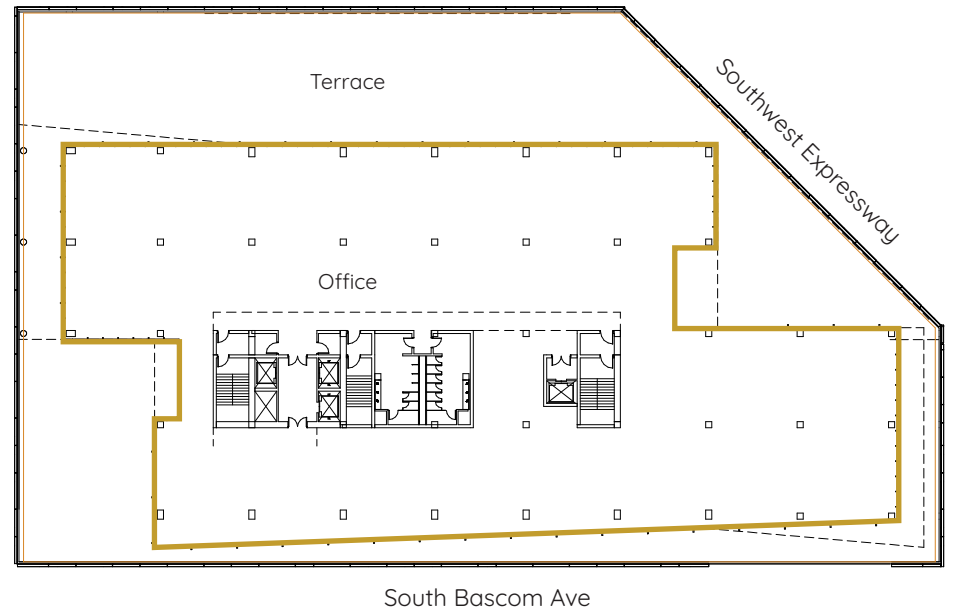


# Floor Plans



**Level 1**

±20,686 SF

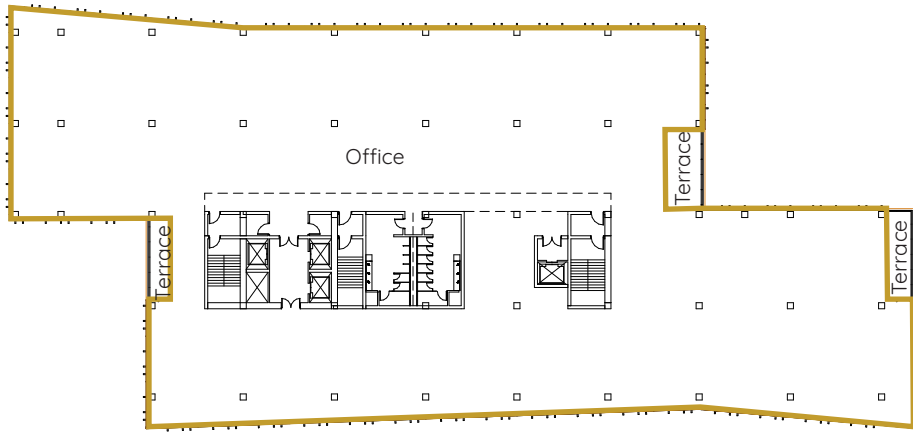


**Level 5**

±37,769 SF



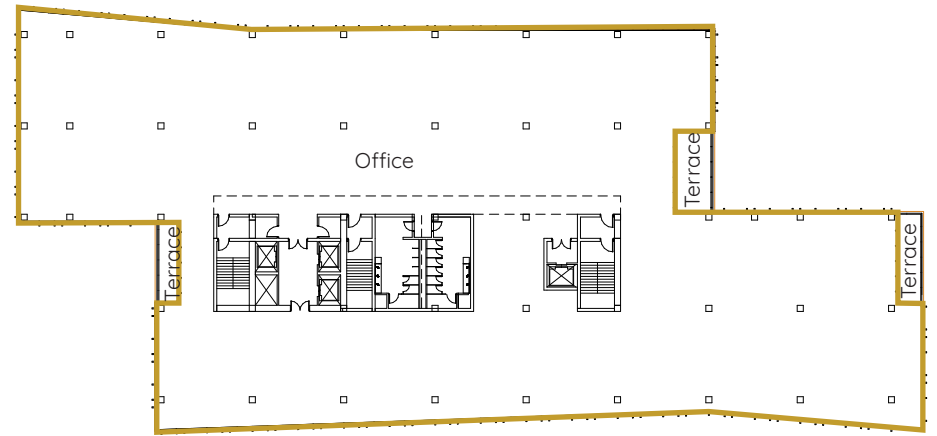
# Floor Plans



South Bascom Ave

**Level 6**

±31,108 SF



South Bascom Ave

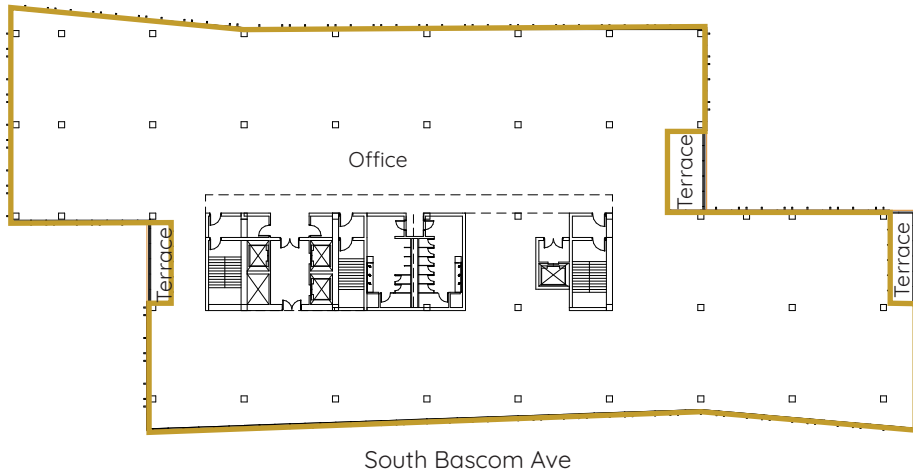
**Level 7**

±31,170 SF

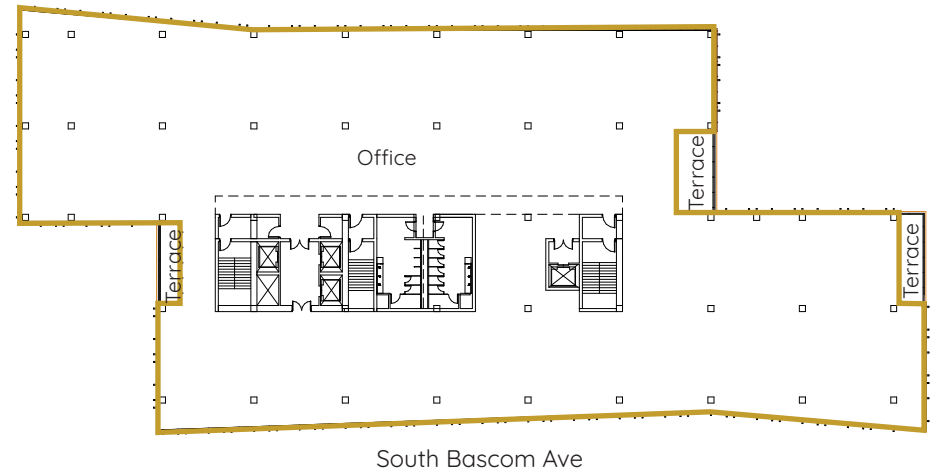




# Floor Plans



**Level 8**  
±30,967 SF

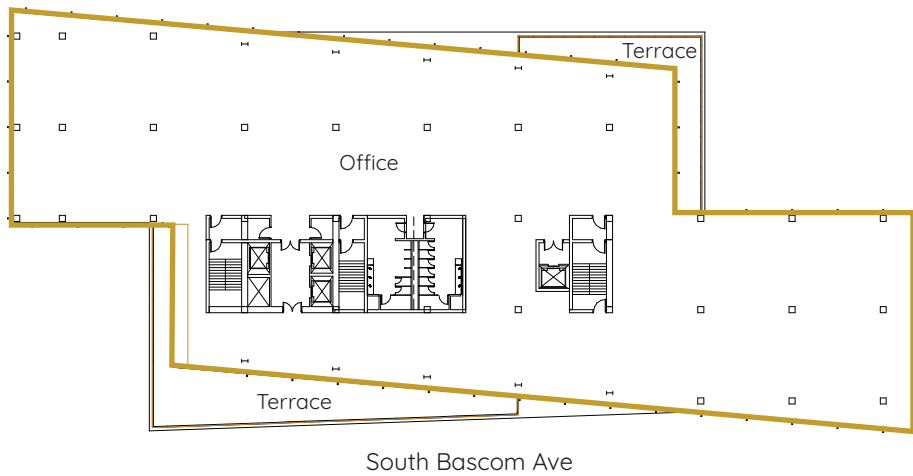


**Level 9**  
±30,967 SF



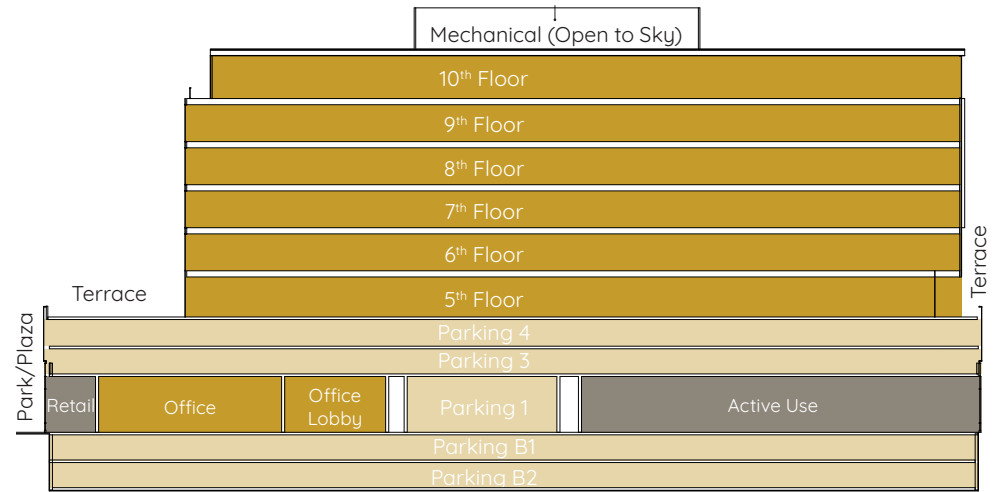


# Floor Plans



Level 10

±31,054 SF



## Elevation



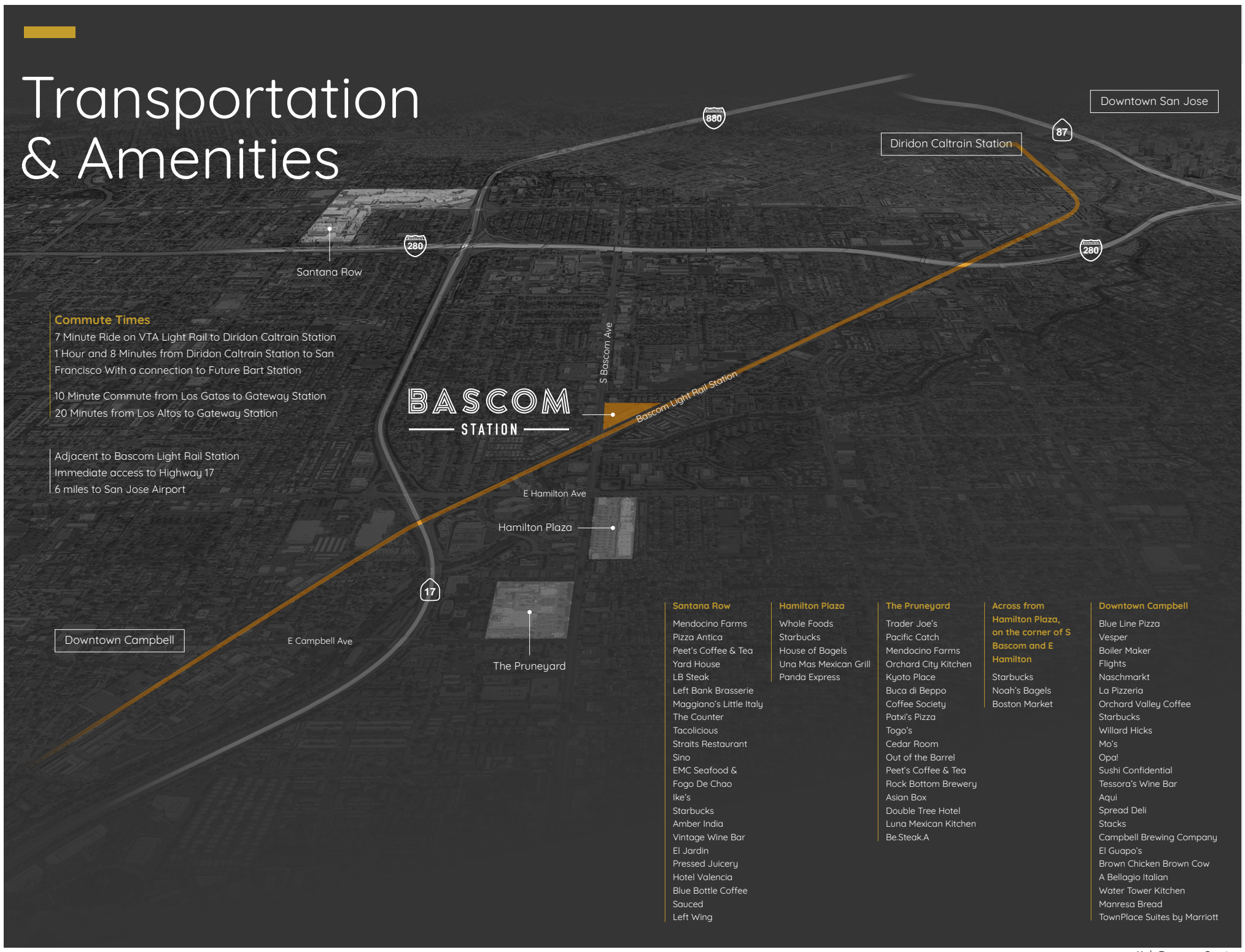


# Transportation & Amenities

## Commuter Times

- 7 Minute Ride on VTA Light Rail to Diridon Caltrain Station
- 1 Hour and 8 Minutes from Diridon Caltrain Station to San Francisco With a connection to Future Bart Station
- 10 Minute Commute from Los Gatos to Gateway Station
- 20 Minutes from Los Altos to Gateway Station

- Adjacent to Bascom Light Rail Station
- Immediate access to Highway 17
- 6 miles to San Jose Airport



**BASCOM**  
STATION

### Santana Row

- Mendocino Farms
- Pizza Antica
- Peet's Coffee & Tea
- Yard House
- LB Steak
- Left Bank Brasserie
- Maggiano's Little Italy
- The Counter
- Tacolicious
- Straits Restaurant
- Sino
- EMC Seafood & Fogo De Chao
- Ike's
- Starbucks
- Amber India
- Vintage Wine Bar
- El Jardin
- Pressed Juicery
- Hotel Valencia
- Blue Bottle Coffee
- Sauced
- Left Wing

### Hamilton Plaza

- Whole Foods
- Starbucks
- House of Bagels
- Una Mas Mexican Grill
- Panda Express

### The Pruneyard

- Trader Joe's
- Pacific Catch
- Mendocino Farms
- Orchard City Kitchen
- Kyoto Place
- Buca di Beppo
- Coffee Society
- Patxi's Pizza
- Togo's
- Cedar Room
- Out of the Barrel
- Peet's Coffee & Tea
- Rock Bottom Brewery
- Asian Box
- Double Tree Hotel
- Luna Mexican Kitchen
- Be.Steak.A

### Across from Hamilton Plaza, on the corner of S Bascom and E Hamilton

- Starbucks
- Noah's Bagels
- Boston Market

### Downtown Campbell

- Blue Line Pizza
- Vesper
- Boiler Maker
- Flights
- Naschmarkt
- La Pizzeria
- Orchard Valley Coffee
- Starbucks
- Willard Hicks
- Mo's
- Opa!
- Sushi Confidential
- Tessoro's Wine Bar
- Aqui
- Spread Deli
- Stacks
- Campbell Brewing Company
- El Guapo's
- Brown Chicken Brown Cow
- A Bellagio Italian
- Water Tower Kitchen
- Manresa Bread
- TownPlace Suites by Marriott





Brandon Bain

[brandon.bain@cushwake.com](mailto:brandon.bain@cushwake.com)

LIC #01308375

Erik Hallgrimson

[erik.hallgrimson@cushwake.com](mailto:erik.hallgrimson@cushwake.com)

LIC #01274540

Kelly Yoder

[kelly.yoder@cushwake.com](mailto:kelly.yoder@cushwake.com)

LIC #01821117

Steve Horton

[steve.horton@cushwake.com](mailto:steve.horton@cushwake.com)

LIC #01127340



**BAYWEST**



**CUSHMAN &  
WAKEFIELD**