



322

VISION FIRST

BOSS
HUGO BOSS

VISIONFIRST
OPTOMETRIST

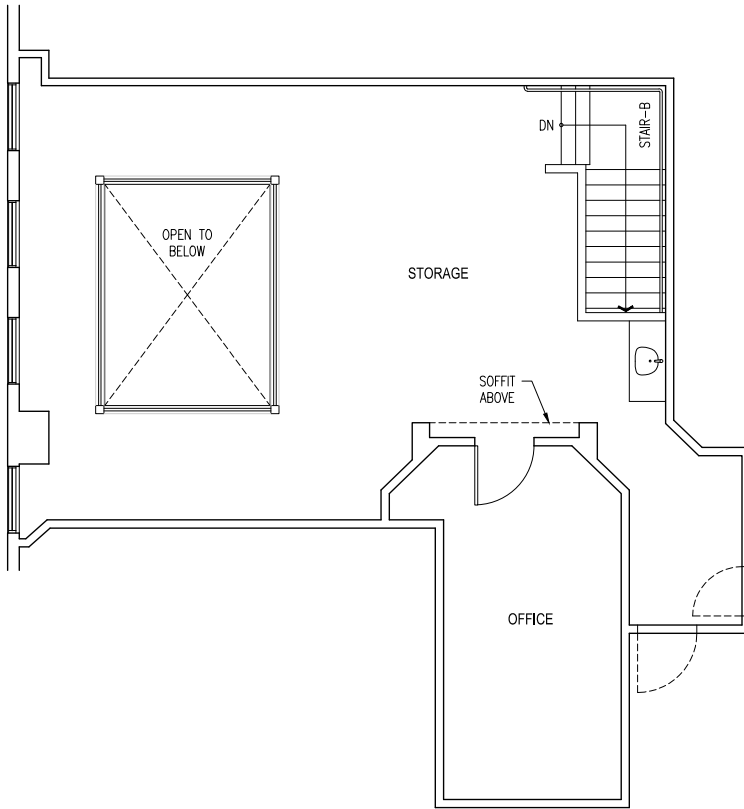
Color Clarity Detail

320 KEARNY

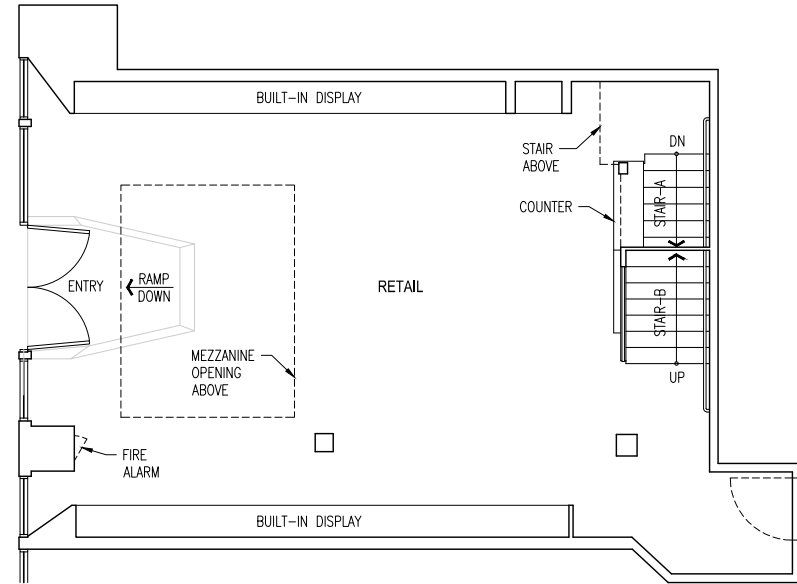
SAN FRANCISCO, CALIFORNIA
RARE FIDI SPACE AVAILABLE



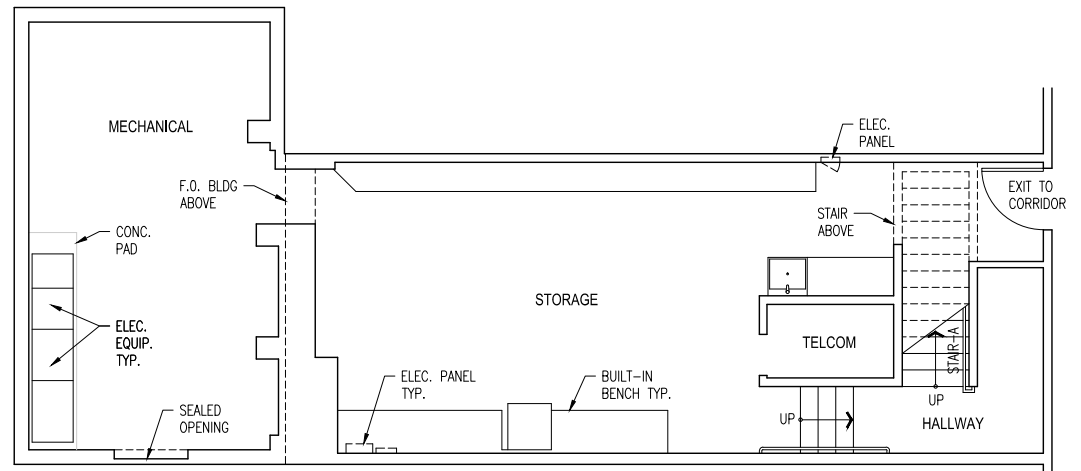
maven
RETAIL



MEZZANINE
+/- 952 SF



GROUND FLOOR
+/- 813 SF



BASEMENT
+/- 865 SF



FEATURES

- Rare FiDi Space
- +/- 2,770 Rentable SF
- All Levels Accessible by Elevator
- High Foot Traffic
- Open Floor Plan
- Abundant Natural Lighting with Skylight
- Great Signage Potential
- Many Neighboring Restaurants and Retailers

320 KEARNY



NEIGHBORHOOD



320 KEARNY

SOMA

Salesforce Tower

Financial District

Bank of America
Financial Center

Montgomery Station



Charles Schwab

Equinox

Ladle & Leaf

Powell Station



Crocker Galleria

Market Street

Le Méridien

Chase Bank

Cafe Venue

Transamerica Pyramid

Credo

Sam's Grill & Seafood Restaurant

Orangetheory Fitness

Sterling Bank & Trust

Cafe Bastille

Wayfare Tavern

Wells Fargo

B44 Catalan Bistro

PiPietro Todd Salon

Leo's

Palio

Ladle &

Pine Street

Bush Street

Verjus

Kusakabe

Barbarossa

The Rug Company

Montgomery Street

Bask

Trestle

Kearny Street

Sacramento Street

California Street

maven

RETAIL • OFFICE • INDUSTRIAL

320 KEARNY



FINANCIAL DISTRICT





maven
RETAIL • OFFICE • INDUSTRIAL

SARAH BRETT SCHWARTZ
office 415.404.6959
sarah@mavenproperties.com
BRE #01903152

JOAN RUYLE
office 415.404.7313
joan@mavenproperties.com
BRE #02006025

466 GREEN STREET SUITE #203
San Francisco, CA 94133
415.781.7700
BRE #01878802

NOTICE: This information has been secured from sources we believe to be reliable but we make no representations, warranties, express or implied, as to the accuracy of the information. Listing broker has been given enough information to provide only a preliminary interest in the property. The materials are not to be considered fact. The information contained herein is not a substitute for thorough due diligence investigation. References to square footage, zoning, use, or age are approximate. Please contact the San Francisco Planning Department to verify zoning at (415) 558-6378, as neither broker or landlord represent that this space is suitable for your use. Tenant or Buyer must verify the information at their own expense and bears all the risk for any inaccuracies. By receiving these materials you are agreeing to the disclaimers set forth herein. BRE#01878802