

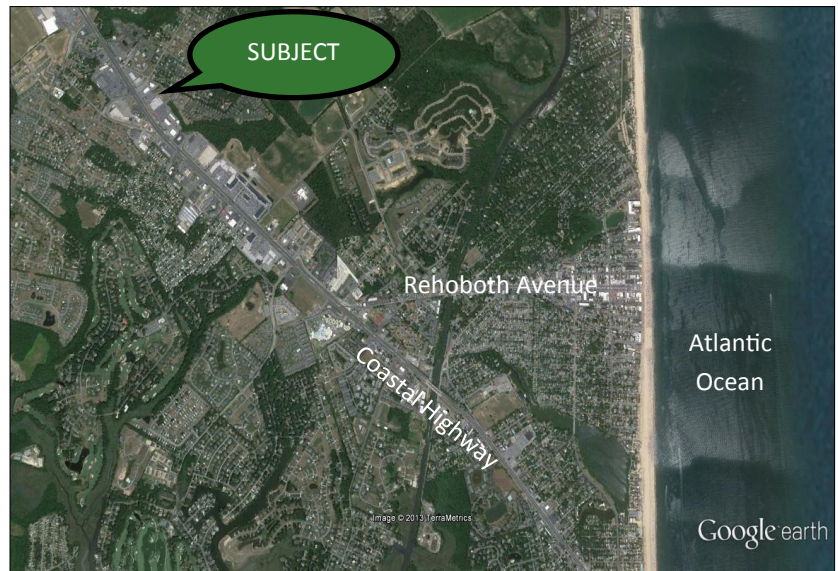
FOR LEASE: **NEW PROFESSIONAL OFFICE**
COASTAL HIGHWAY
REHOBOTH BEACH, DE 19971



FEATURES:

- Rehoboth's Premier Class A Professional Office Space
- New Construction
- 3 Story Building: Elevator served, central lobby, common corridor, professional management
- +/- 17,000 SF with — 2,667 - 5,334 SF spaces available (3rd Floor)
- 19339 Coastal Highway

LOCATION MAP



FOR MORE INFORMATION

DOUG MOTLEY

T 302.226.6645

dmotley@jacklingo.com

C 302.540.6630

JACK LINGO INC. REALTOR

246 Rehoboth Avenue | Rehoboth Beach, DE 19971

T 302.227.3883 | F 302.227.4686 | www.jacklingo.com

NICK HAMMONDS

T 302.226.6631

nhammonds@jacklingo.com

C 443.286.8744

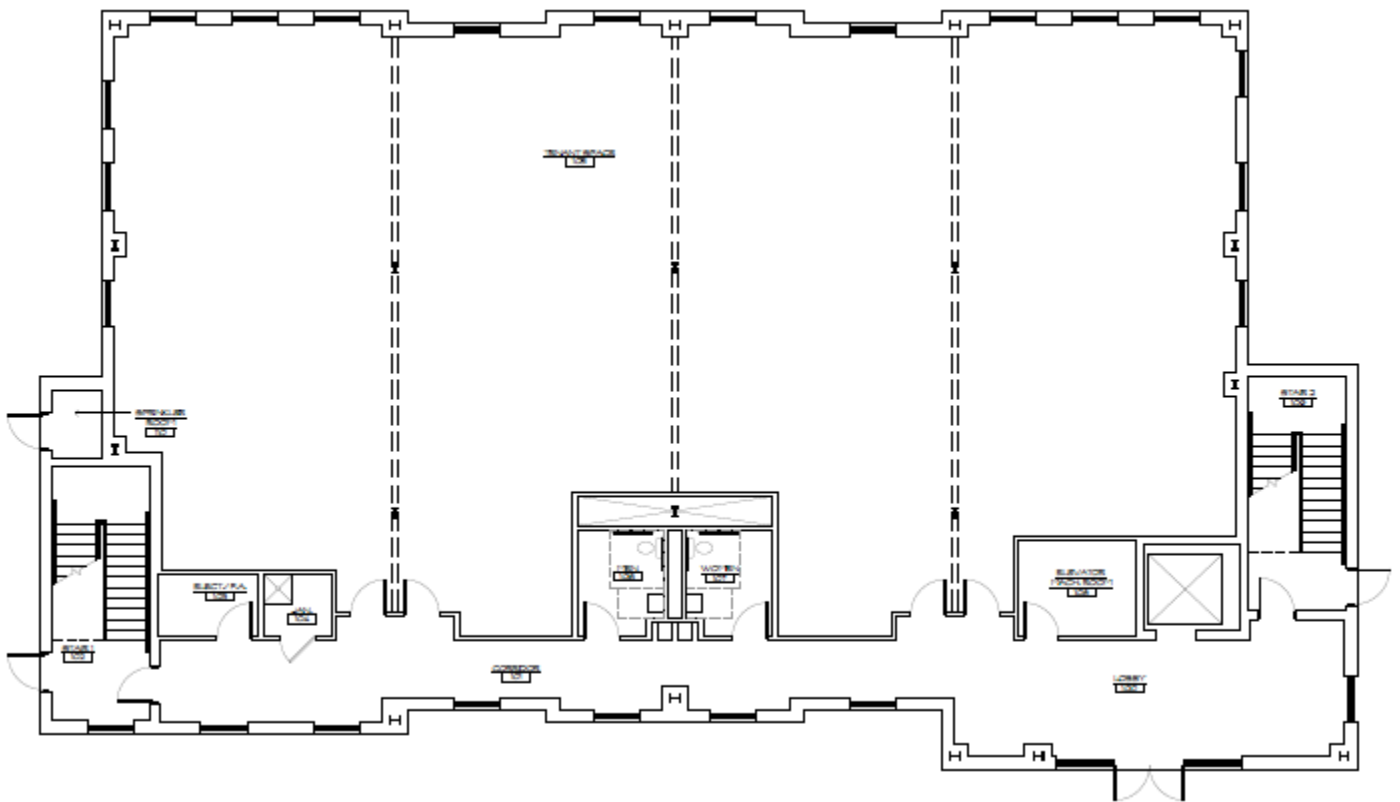


19339 COASTAL HIGHWAY

REHOBOTH BEACH, DE 19971



**TYPICAL
FLOOR PLAN:**



**FOR MORE
INFORMATION**

DOUG MOTLEY

T 302.226.6645

dmotley@jacklingo.com

C 302.540.6630

JACK LINGO INC. REALTOR

246 Rehoboth Avenue | Rehoboth Beach, DE 19971

T 302.227.3883 | F 302.227.4686 | www.jacklingo.com

NICK HAMMONDS

T 302.226.6631

nhammonds@jacklingo.com

C 443.286.8744

