

LAND
FOR
SALE

LAND I-75 AT THE CRITTENDEN EXIT

CRITTENDEN, KENTUCKY 41030

37.65 acres of land is available for sale in the city of Crittenden on U.S. 25 at I-75/Crittenden exit interchange.

The price is \$35,000 per acre. The property has immediate access and exposure to I-75, and is rail served. There is no payroll tax for Crittenden or Grant county and there are local incentives available to extend the road and utilities into the site,



LOCATION MAP



FOR MORE
INFORMATION
PLEASE
CONTACT

Total Acreage 37.65 acres (34.58 acres in Grant County and 3.07 acres in Kenton County)

Zoning 29.96 acres: I-1, Grant Count
4.62 acres: Agricultural, Grant County
3.07 acres: Agricultural, Kenton County

Rail Norfolk Southern

Utilities Gas & Electric: Duke Energy/ULH&P
Water: Bullock Pen Water District
Sewer: Crittenden City Sewer System
Telephone: Cincinnati Bell Telephone

Transportation Cincinnati/Northern KY Int'l Airport - 34 miles north via I-75
Blue Grass Airport of Lexington - 45 miles south via I-75
Louisville Int'l Airport - 92 miles south via I-71

Courier Service Within 150 miles of three major courier hubs including: DHL Hub at CVG (24 miles), UPS Worldport in Louisville, KY (93 miles), and Fed Ex Hub in Indianapolis, IN (144 miles)

Mike Lowe
First Vice President
+1 513 369 1311
mike.lowe@cbre.com

Doug Whitten
Vice President
+1 513 369 1332
doug.whitten@cbre.com

CBRE

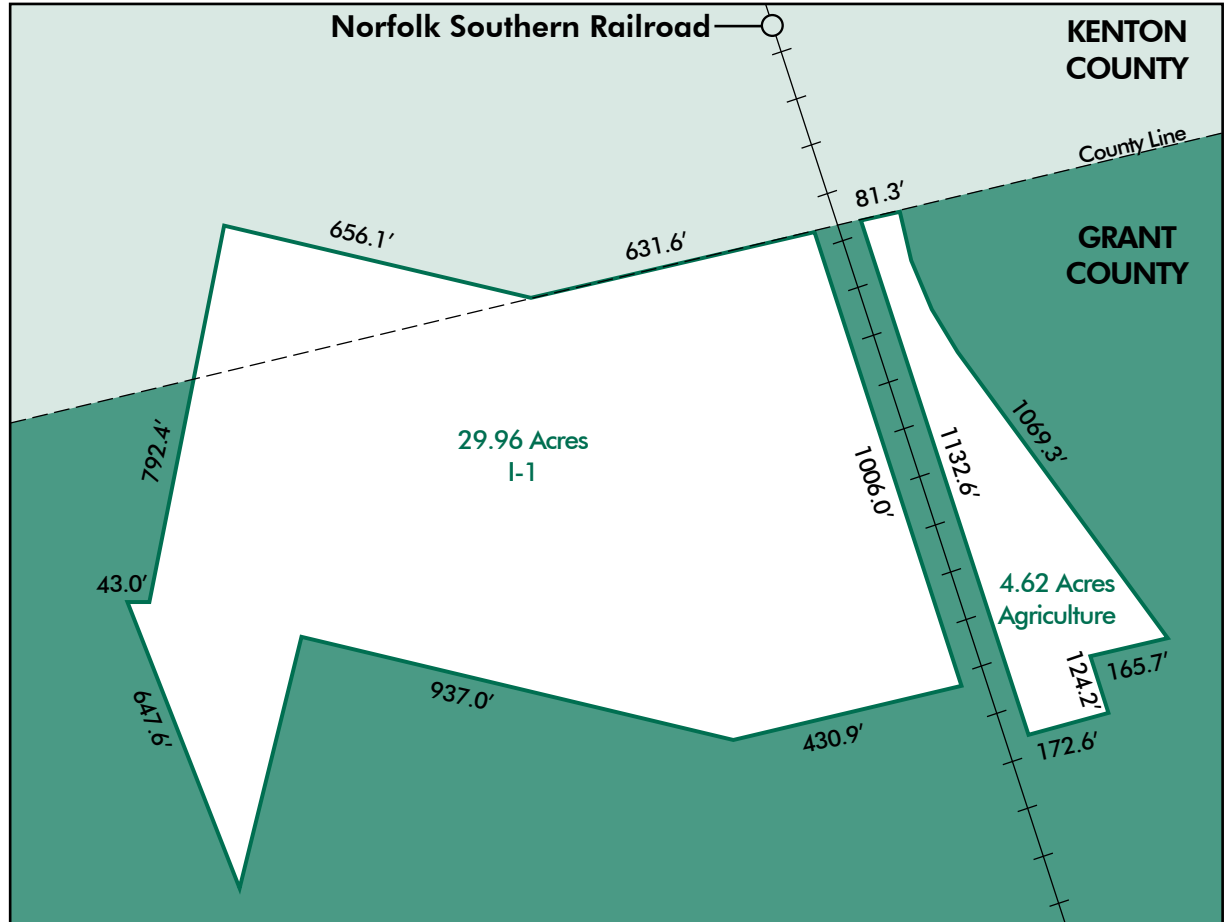
LAND
FOR
SALE



LAND I-75 AT THE CRITTENDEN EXIT

CRITTENDEN, KENTUCKY 41030

SITE PLAN



FOR MORE
INFORMATION
PLEASE CONTACT

Mike Lowe

First Vice President
+1 513 369 1311
mike.lowe@cbre.com

Doug Whitten

Vice President
+1 513 369 1332
doug.whitten@cbre.com



CBRE | 201 E Fifth Street | Suite 1200 | Cincinnati, OH 45202 | www.cbre.com/cincinnati

©2014 CBRE, Inc. The information above has been obtained from sources believed reliable. While we do not doubt its accuracy, we have not verified it and make no guarantee, warranty or representation about it. It is your responsibility to independently confirm its accuracy and completeness. Photos herein are the property of their respective owners and use of these images without the express written consent of the owner is prohibited. CBRE and the CBRE logo are service marks of CBRE, Inc. and/or its affiliated or related companies in the United States and other countries. All other marks displayed on this document are the property of their respective owners.