

105 MORRIS STREET, SEBASTOPOL, CA 95472

Office Suite For Lease



OFFERING SUMMARY

Lease Rate:	\$30.00 - 45.80 SF/yr (Full Service; NNN)
Available SF:	131 - 1,187 SF
Lot Size:	1.01 Acres
Year Built:	1991
Building Size:	12,953
Zoning:	M
Market:	San Francisco
Submarket:	North Bay
Traffic Count:	26,000



PROPERTY OVERVIEW

Multi tenant office building with monument sign and good exposure. LED lighting throughout. Convenient location - walk to The Barlow across the street and an easy walk downtown.

Lease includes access to a common conference room with online scheduling at www.nbcre.com/morris NNN Lease rate includes, power, water, sewer, building insurance, landscaping, common area janitorial. Lessee pays directly for Internet, phone, liability insurance, and janitorial within their suite, NNN = \$.57 PSF / Mo.



Dale Dockins, CCIM
707.521.3500 x302
dale@nbcre.com

Michael Mazanec
707.521.3500 x306
michael@nbcre.com

105 MORRIS STREET, SEBASTOPOL, CA 95472

Office Suite For Lease



Dale Dockins, CCIM	Michael Mazanec
707.521.3500 x302	707.521.3500 x306
dale@nbcre.com	michael@nbcre.com

105 MORRIS STREET, SEBASTOPOL, CA 95472

Office Suite For Lease

LEASE RATE:	\$30.00 - 45.80 SF/YR	TOTAL SPACE:	131 - 1,187 SF
LEASE TYPE:	Full Service; NNN	LEASE TERM:	Negotiable

SPACE	SPACE USE	LEASE RATE	LEASE TYPE	SIZE (SF)	TERM	COMMENTS
Office Suite #216	Office Building	\$500 per month	Full Service	131 SF	Negotiable	Upstairs unit. Includes power and use of common area conference room.
Office Suite #120	Office Building	\$2.50 SF/month	NNN	1,187 SF	Negotiable	Ground floor suite adjacent to common area conference room. NNN = \$.57 PSF/ Mo.

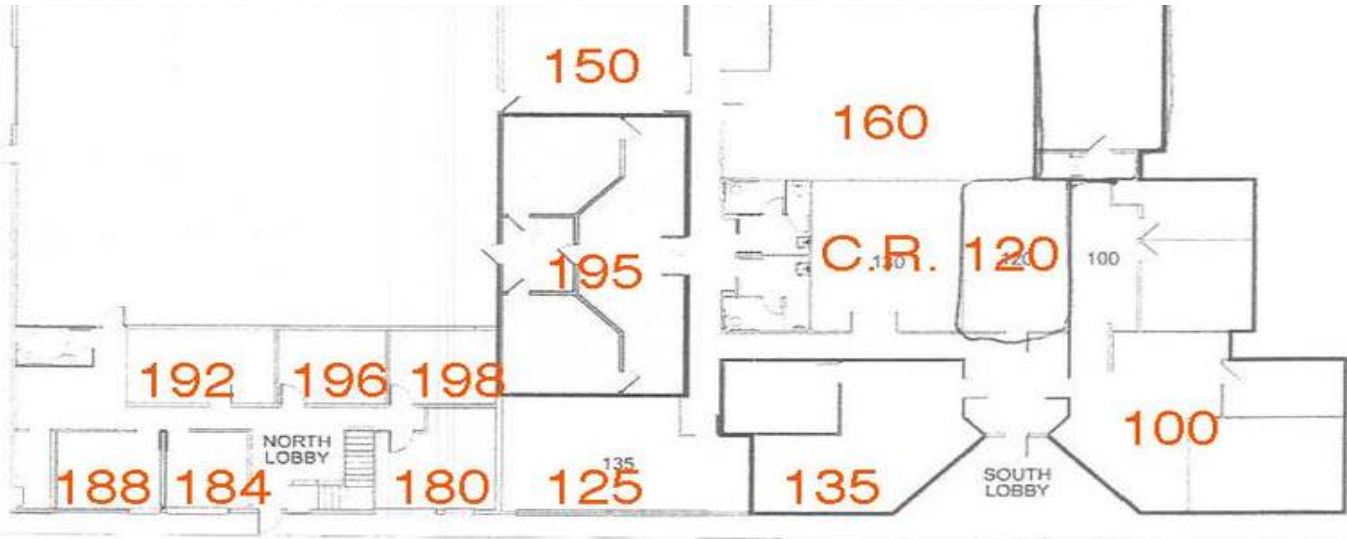


Dale Dockins, CCIM
707.521.3500 x302
dale@nbcre.com

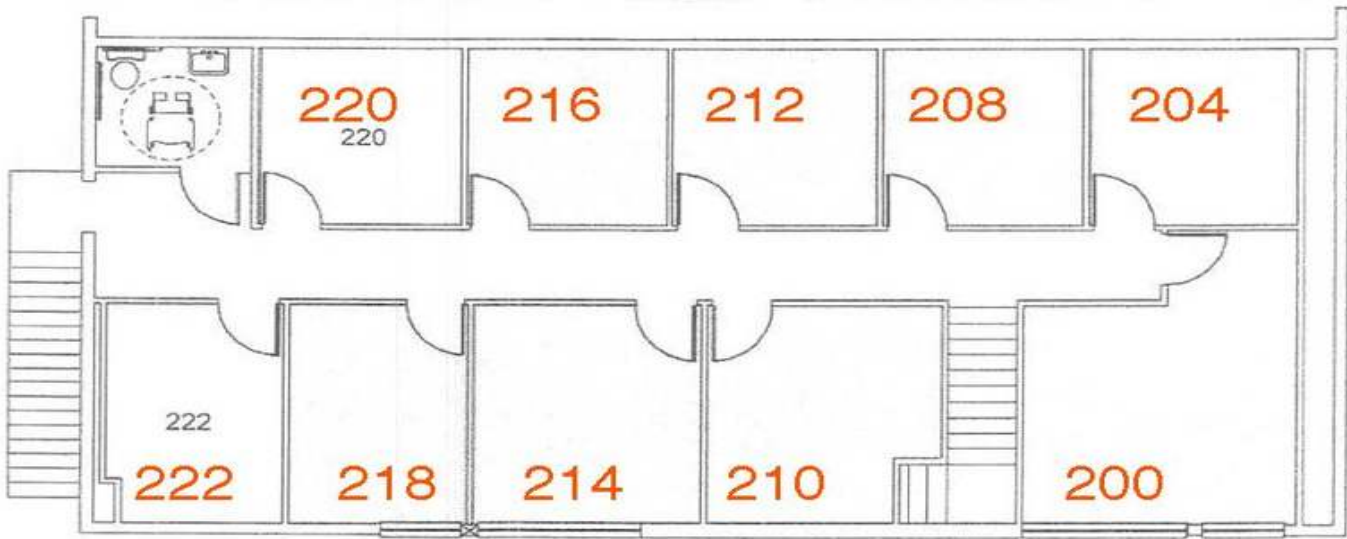
Michael Mazanec
707.521.3500 x306
michael@nbcre.com

105 MORRIS STREET, SEBASTOPOL, CA 95472

Office Suite For Lease



FIRST FLOOR



SECOND FLOOR



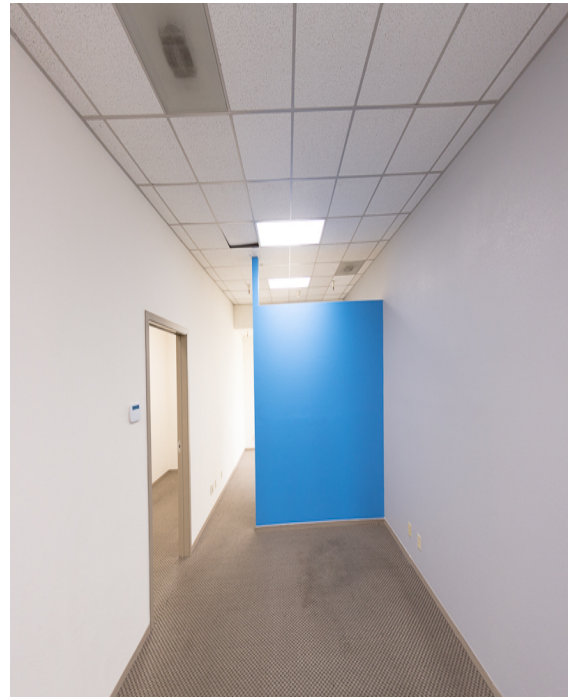
Dale Dockins, CCIM Michael Mazanec
707.521.3500 x302 707.521.3500 x306
dale@nbcre.com michael@nbcre.com

105 MORRIS STREET, SEBASTOPOL, CA 95472

Office Suite For Lease



Suite #212



Suite #212



Suite #212



Suite #212

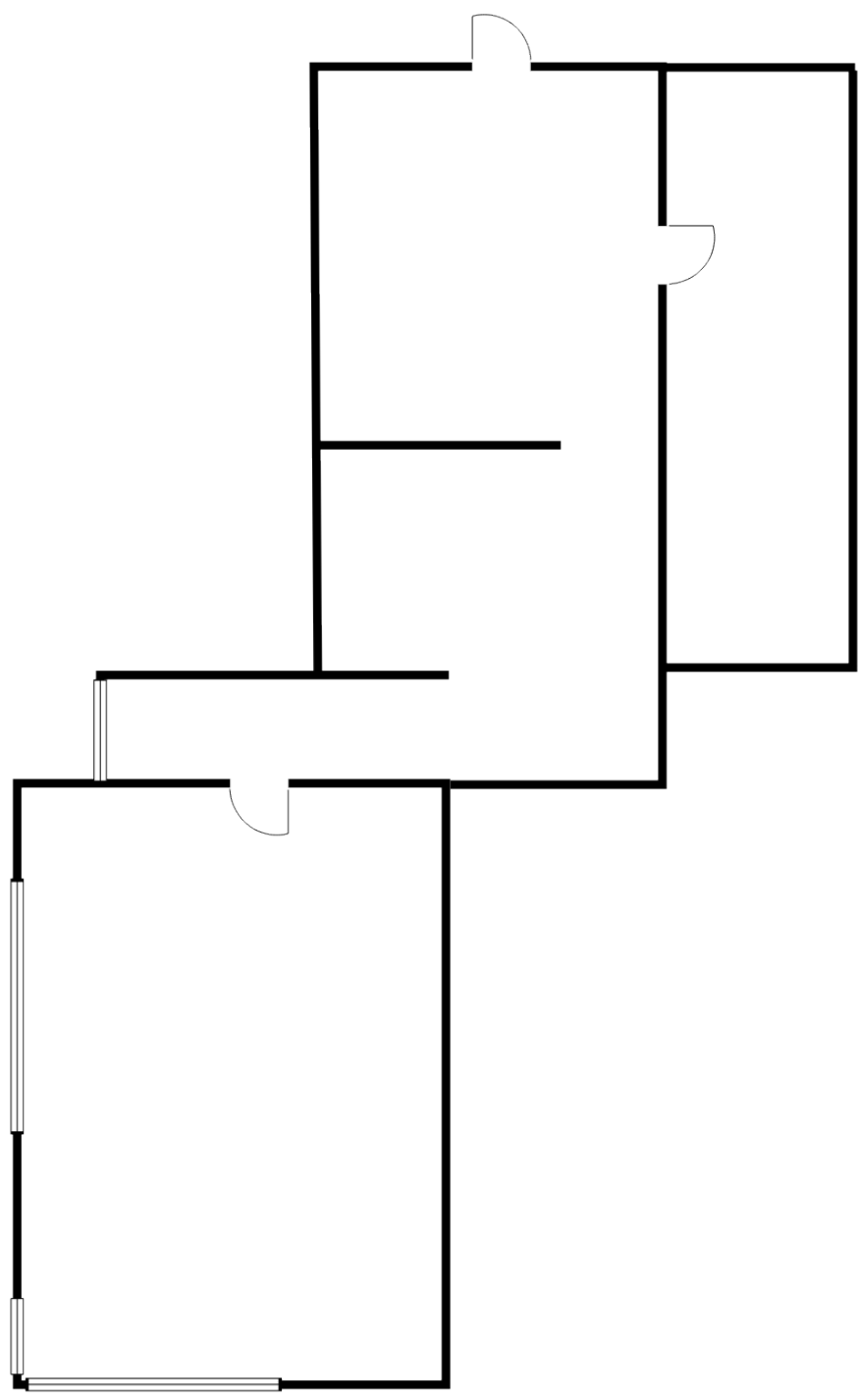


Dale Dockins, CCIM
707.521.3500 x302
dale@nbcre.com

Michael Mazanec
707.521.3500 x306
michael@nbcre.com

105 MORRIS STREET, SEBASTOPOL, CA 95472

Office Suite For Lease



Dale Dockins, CCIM	Michael Mazanec
707.521.3500 x302	707.521.3500 x306
dale@nbcre.com	michael@nbcre.com

105 MORRIS STREET, SEBASTOPOL, CA 95472

Office Suite For Lease



Conference Room

Registration

Rules & Regulations

Maintenance Request

105 Morris Street – Conference Room

Home » 105 Morris Street – ...

Conference Room Calendar

105morrisst@gmail.com

Today ◀ ▶ Oct 31 – Nov 6, 2016 ▾

Print Week Month Agenda ▾

	Mon 10/31	Tue 11/1	Wed 11/2	Thu 11/3	Fri 11/4	Sat 11/5	Sun 11/6
6am							
7am							
8am							
9am							
10am							
11am							
12pm							
1pm			1p – 2:30p busy				
2pm	2:30p – 4p busy	2:30p – 4p busy					
3pm							
4pm	4p – 5:30p busy		4p – 5:30p busy				
5pm							

Events shown in time zone: Pacific Time

+ Google Calendar



Dale Dockins, CCIM
707.521.3500 x302
dale@nbcre.com

Michael Mazanec
707.521.3500 x306
michael@nbcre.com

105 MORRIS STREET, SEBASTOPOL, CA 95472

Office Suite For Lease



Map data ©2019 Google Imagery ©2019 , DigitalGlobe, USDA Farm Service Agency

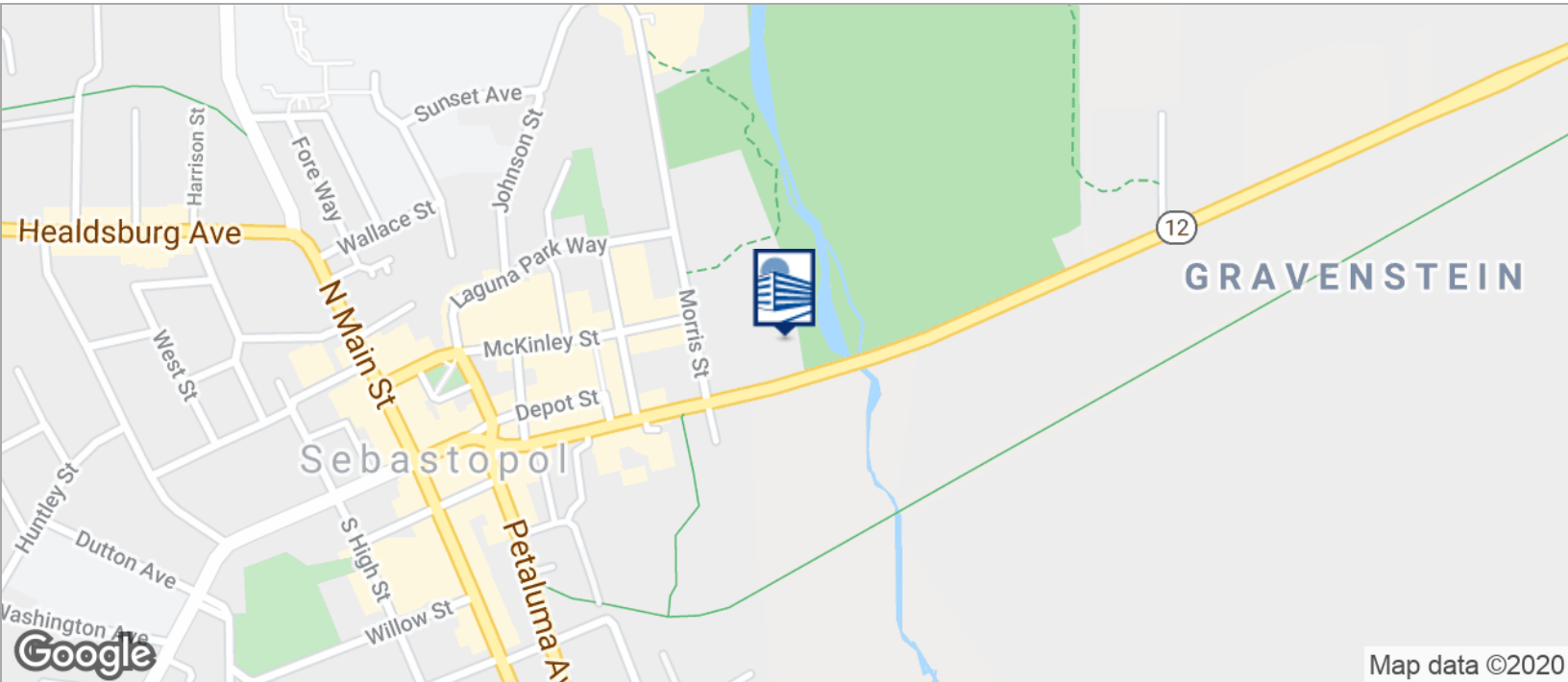


Dale Dockins, CCIM
707.521.3500 x302
dale@nbcre.com

Michael Mazanec
707.521.3500 x306
michael@nbcre.com

105 MORRIS STREET, SEBASTOPOL, CA 95472

Office Suite For Lease

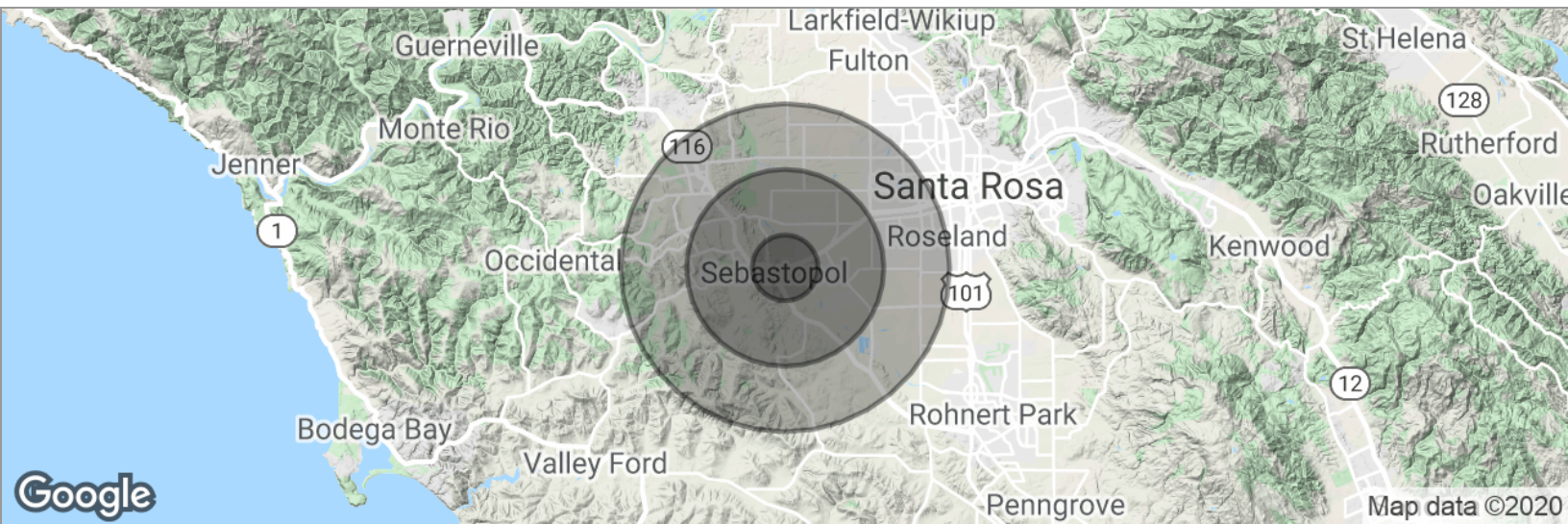


Dale Dockins, CCIM
707.521.3500 x302
dale@nbcre.com

Michael Mazanec
707.521.3500 x306
michael@nbcre.com

105 MORRIS STREET, SEBASTOPOL, CA 95472

Office Suite For Lease



POPULATION	1 MILE	3 MILES	5 MILES
Total population	3,422	26,030	53,536
Median age	44.0	43.1	41.9
Median age (Male)	41.7	40.1	39.6
Median age (Female)	45.9	45.1	43.5
HOUSEHOLDS & INCOME	1 MILE	3 MILES	5 MILES
Total households	1,388	10,259	20,370
# of persons per HH	2.5	2.5	2.6
Average HH income	\$81,654	\$86,799	\$84,698
Average house value	\$592,061	\$601,651	\$580,707
ETHNICITY (%)	1 MILE	3 MILES	5 MILES
Hispanic	14.9%	17.8%	20.8%
RACE (%)	1 MILE	3 MILES	5 MILES
White	84.0%	82.0%	79.6%
Black	1.2%	1.5%	1.4%
Asian	3.0%	4.4%	4.9%
Hawaiian	0.2%	0.2%	0.4%
American Indian	1.7%	1.6%	1.9%
Other	5.6%	6.5%	8.1%

* Demographic data derived from 2010 US Census



Dale Dockins, CCIM
707.521.3500 x302
dale@nbcre.com

Michael Mazanec
707.521.3500 x306
michael@nbcre.com

105 MORRIS STREET, SEBASTOPOL, CA 95472

Office Suite For Lease

This document has been prepared by North Bay Commercial Real Estate, Inc. (NBCRE) for advertising and general information only. NBCRE makes no guarantees, representations or warranties of any kind, expressed or implied, regarding the information including, but not limited to, warranties of content, accuracy and reliability. Any interested party should undertake their own inquiries as to the accuracy of the information. NBCRE excludes unequivocally all inferred or implied terms, conditions and warranties arising out of this document and excludes all liability for loss and damages arising there from. This publication is the copyrighted property of North Bay Commercial Real Estate, Inc. © 2019. All rights reserved.



Dale Dockins, CCIM
707.521.3500 x302
dale@nbcre.com

Michael Mazanec
707.521.3500 x306
michael@nbcre.com

105 MORRIS STREET, SEBASTOPOL, CA 95472

Office Suite For Lease

This document has been prepared by North Bay Commercial Real Estate, Inc. (NBCRE) for advertising and general information only. NBCRE makes no guarantees, representations or warranties of any kind, expressed or implied, regarding the information including, but not limited to, warranties of content, accuracy and reliability. Any interested party should undertake their own inquiries as to the accuracy of the information. NBCRE excludes unequivocally all inferred or implied terms, conditions and warranties arising out of this document and excludes all liability for loss and damages arising there from. This publication is the copyrighted property of North Bay Commercial Real Estate, Inc. © 2020. All rights reserved.



Dale Dockins, CCIM
707.521.3500 x302
dale@nbcre.com

Michael Mazanec
707.521.3500 x306
michael@nbcre.com