

# FOR LEASE



## AVAILABLE 325 SF Office Space - All Utilities Included!

OLIVE BRANCH OFFICE SPACE

6933 CRUMPLER BOULEVARD • OLIVE BRANCH, MS 38654

Available SF: 325  
Building Class: A  
Building SF: 7,000  
Lease Rate: \$550.00  
Type: Office  
Zoning: PUD



**RHODES THOMPSON**  
Commercial Agent  
(662) 892-4000  
rhodes@partners-one.com  
Mississippi

Main Office:  
(901) 286-6200

### Available Spaces

Suite	Rate	Size	Type	Term	Use
G	\$550 /month	325	MG	3-5 Years	Office

### Property Description

Looking for a small office in Olive Branch? Look no further that Suite G in the 6933 Crumpler Blvd Building! This space offers a quaint office space in a well-built, beautiful building that is home to multiple office tenants. The lease rate includes all utilities and shared space including a bathroom on the third floor next to Suite G. If you are a small business starting out or looking for an office away from home, give us a call today!

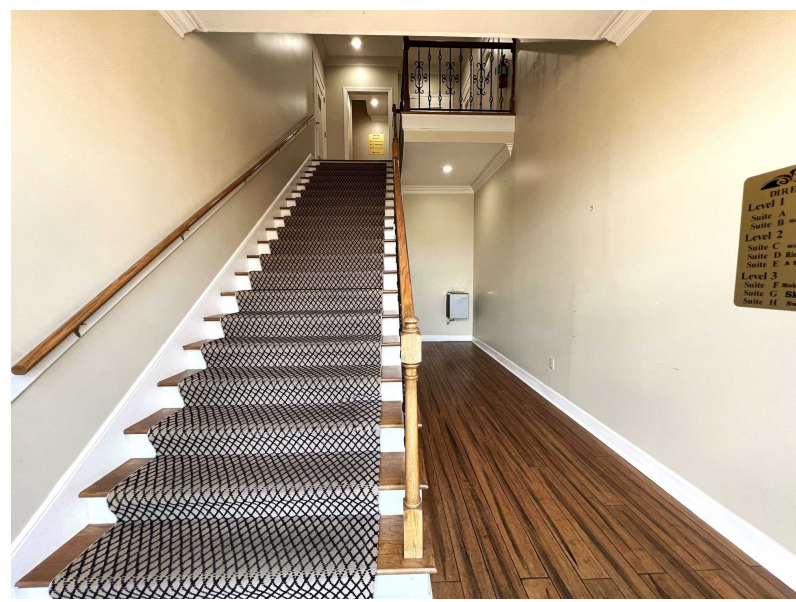
### Location Description

This office building sits facing the Olive Branch Kroger/Retail HUB between Craft Road and Highway 178. Travel one half mile on Goodman from Craft Road and take a right on Crumpler Boulevard between the CVS



# PROPERTY SUMMARY

Olive Branch Office Space  
6933 Crumpler Boulevard | Olive Branch, MS 38654

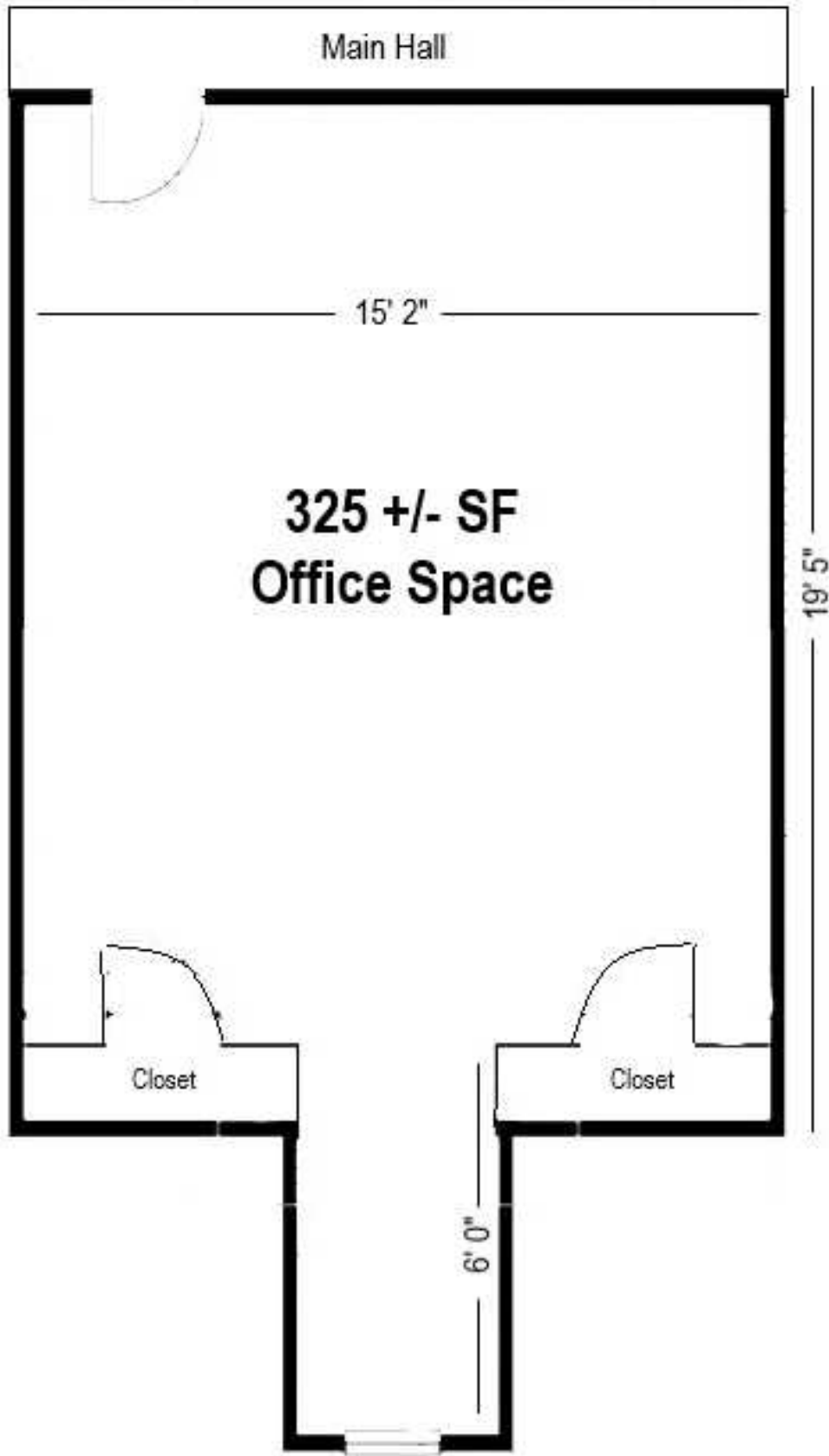


## Property Overview

- Utilities Included in Lease
- Goodman Road Traffic
- Small Office Space for Starting Business
- Well-Established Office Park
- Off-Street Parking

# FLOOR PLAN

Olive Branch Office Space  
6933 Crumpler Boulevard | Olive Branch, MS 38654



# BUSINESS MAP

Olive Branch Office Space  
6933 Crumpler Boulevard | Olive Branch, MS 38654

