



**CUSHMAN &  
WAKEFIELD**  
Commerce

FOR LEASE

**764 East Winchester**  
Salt Lake City, Utah

MOUNTAIN VIEW CORPORATE CENTER II



## Office Space for Lease

### Property Highlights

- \$25.50 / RSF Full Service
- Excellent parking
- Immediate access to I-215
- Close to restaurants, banks, business services and shopping
- I-215 visibility
- Crown signage available on Mountain View Corporate Center II
- Abundant window lines provide for great natural light

**Mike Richmond**  
Executive Director  
+1 801 303 5434  
mrichmond@comre.com

**Dana Baird, ccim**  
Executive Director  
+1 801 303 5526  
dbaird@comre.com

*Independently Owned and Operated / A Member of the Cushman & Wakefield Alliance*

Cushman & Wakefield Copyright 2016. No warranty or representation, express or implied, is made to the accuracy or completeness of the information contained herein, and same is submitted subject to errors, omissions, change of price, rental or other conditions, withdrawal without notice, and to any special listing conditions imposed by the property owner(s). As applicable, we make no representation as to the condition of the property (or properties) in question.  
(path: G:\1 - Projects\Richmond, Mike\1 - Flyers\Mountain View Corp Center\MountainView\_Corp\_II-Lease)



170 South Main Street  
Suite 1600  
Salt Lake City, UT 84101  
Main +1 801 322 2000  
Fax +1 801 322 2040  
**comre.com**



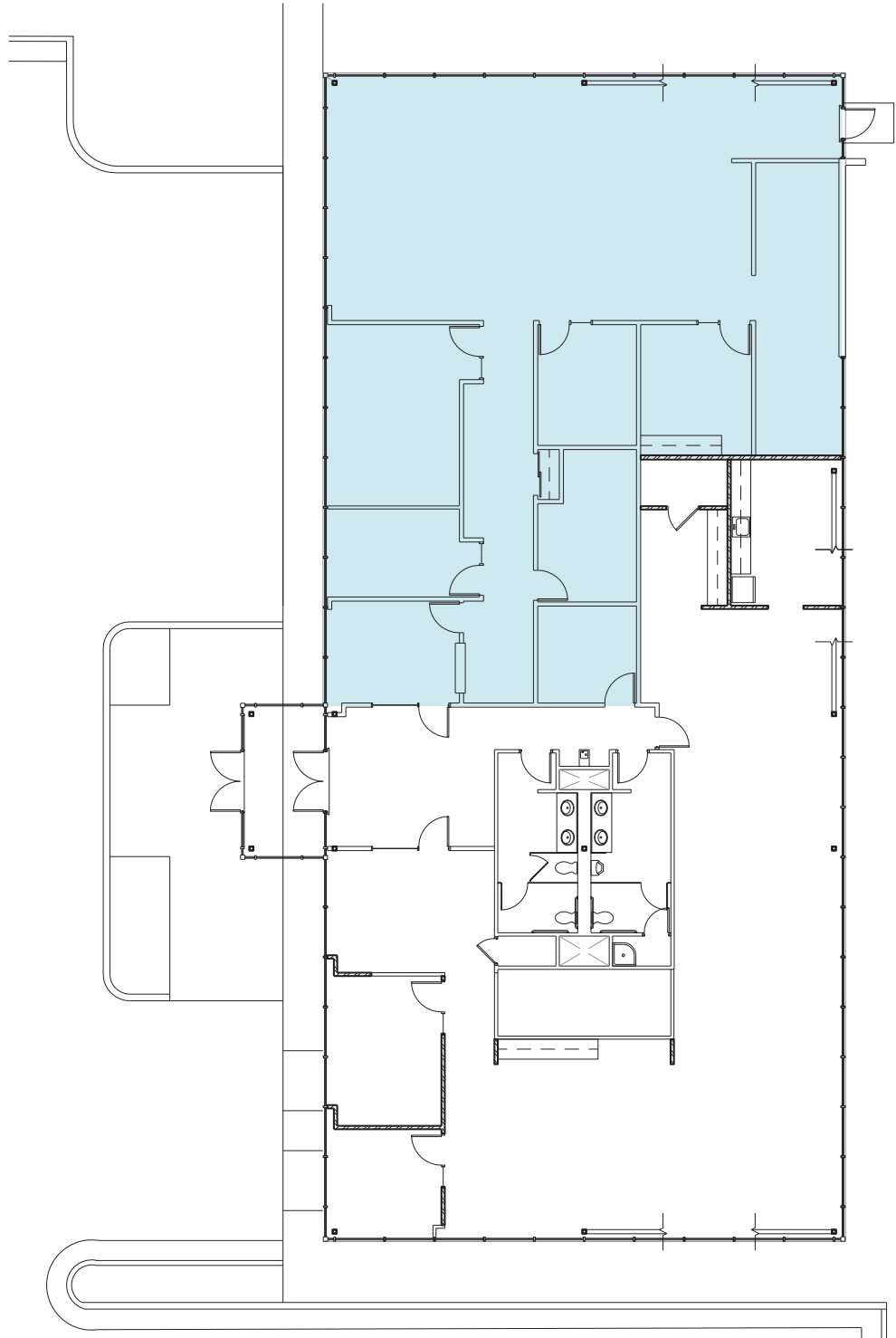
**CUSHMAN &  
WAKEFIELD**  
Commerce

FOR LEASE

**764 East Winchester**  
Salt Lake City, Utah

## Floor Plan

**Suite 100**  
**3,094 RSF**



**Mike Richmond**  
Executive Director  
+1 801 303 5434  
mrichmond@comre.com

**Dana Baird, ccim**  
Executive Director  
+1 801 303 5526  
dbaird@comre.com

170 South Main Street  
Suite 1600  
Salt Lake City, UT 84101  
Main +1 801 322 2000  
Fax +1 801 322 2040  
**comre.com**

*Independently Owned and Operated / A Member of the Cushman & Wakefield Alliance*

Cushman & Wakefield Copyright 2016. No warranty or representation, express or implied, is made to the accuracy or completeness of the information contained herein, and same is submitted subject to errors, omissions, change of price, rental or other conditions, withdrawal without notice, and to any special listing conditions imposed by the property owner(s). As applicable, we make no representation as to the condition of the property (or properties) in question.  
(path: G:\1 - Projects\Richmond, Mike\1 - Flyers\Mountain View Corp Center\MountainView\_Corp\_II-Lease)