



4716 Expo Drive

Manitowoc, WI

Well maintained 12,252 SF commercial/flex building for sale/lease.

Adjacent to high-traffic retail sector in Manitowoc with easy access to Interstate 43.

1,924 SF of office space with (5) private offices and open work area. Large windows facing South Rapids Road. Included security system.

(3) gas-fired suspended furnaces and (3) separate AC units.

3-phase/400 amp power

16' clear heights in heated warehouse

(1) 10'x8' truck dock with leveler

(1) 10'x12' at grade door



SALE PRICE	\$875,000
LEASE RATE	\$5.75-\$6.00 NNN
BUILDING SIZE	12,252 SF
ZONING	Commercial

For more information:

Adam Meyers

920.560.5091 • adamm@naipfefferle.com

Tom Fisk

920.560.5090 • tomf@naipfefferle.com

THE INFORMATION CONTAINED HEREIN WAS OBTAINED FROM SOURCES BELIEVED RELIABLE, HOWEVER, NAI PFEFFERLE MAKES NO GUARANTEES, WARRANTIES, OR REPRESENTATIONS AS TO THE COMPLETENESS OR ACCURACY THEREOF. THE PRESENTATION OF THIS PROPERTY IS SUBMITTED SUBJECT TO ERRORS, OMISSION, CHANGE OF PRICE OR OTHER CONDITIONS, PRIOR SALE OR LEASE, OR WITHDRAWAL WITHOUT NOTICE.

1192 Hansen Road, Suite 201

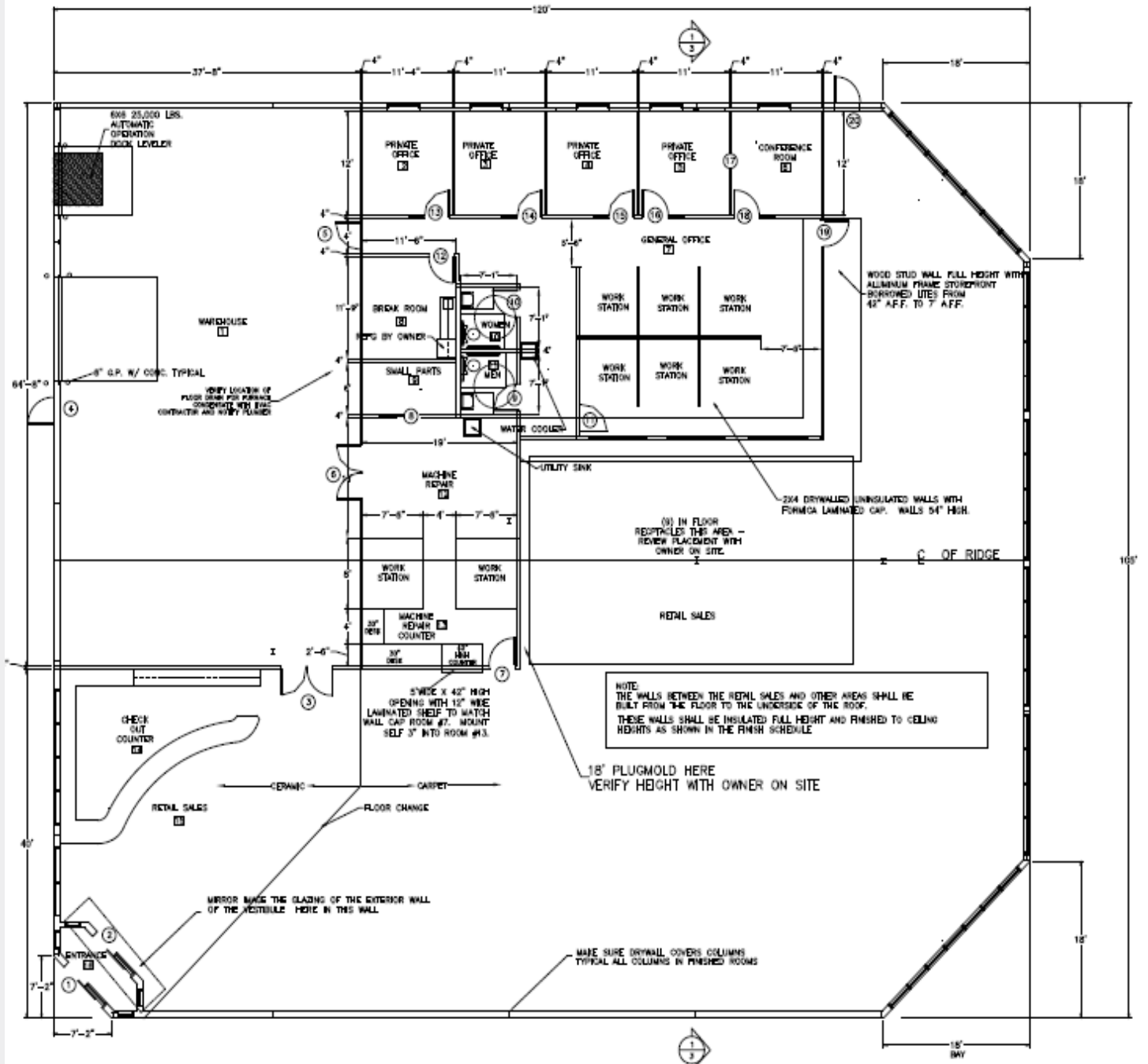
Green Bay, WI 54304

920.884.5000

naipfefferle.com

For Sale or Lease
 4716 Expo Drive
 Manitowoc, WI

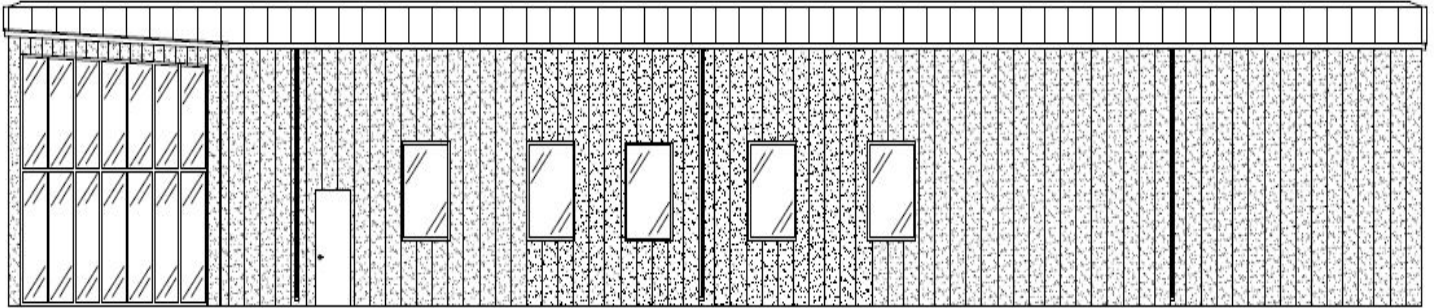
Floor Plan



1192 Hansen Road, Suite 201
 Green Bay, WI 54304
 920.884.5000

For Sale or Lease
4716 Expo Drive
Manitowoc, WI

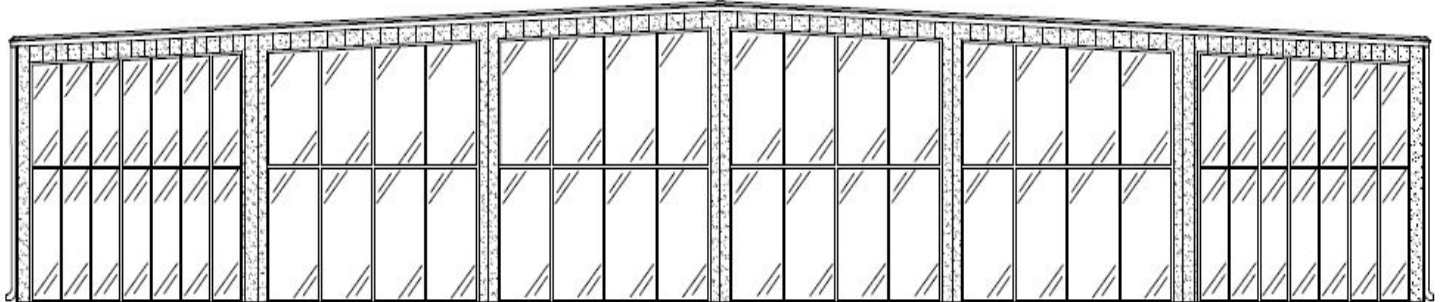
North Elevation



NORTH ELEVATION

SCALE: $1/4" = 1'-0"$

East Elevation

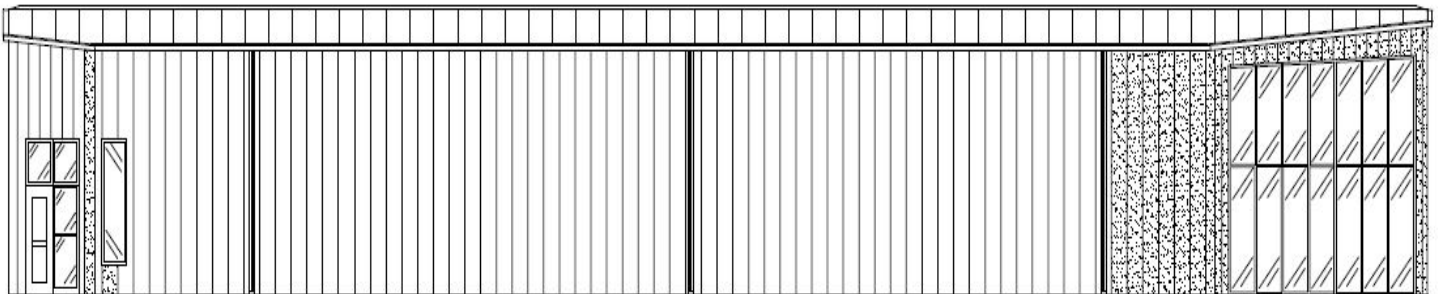


EAST ELEVATION

SCALE: $1/4" = 1'-0"$

For Sale or Lease
4716 Expo Drive
Manitowoc, WI

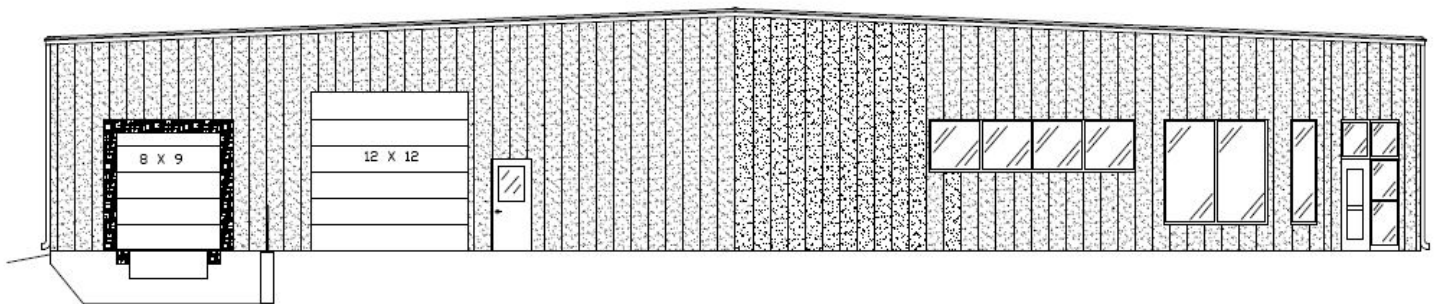
South Elevation



SOUTH ELEVATION

SCALE: 1/4" = 1'-0"

West Elevation



WEST ELEVATION

SCALE: 1/4" = 1'-0"

For Sale or Lease
4716 Expo Drive
Manitowoc, WI

2020 Demographics

	1 MILE	5 MILES
POPULATION	2,602	36,373
HOUSEHOLDS	1,218	16,657
AVG HOUSEHOLD INCOME	\$67,571	\$67,662

GIS Map



Daily Traffic Counts

S RAPIDS ROAD	8,529
INTERSTATE 43	22,239
US HIGHWAY 151	17,709

Area Business Map



1192 Hansen Road, Suite 201
Green Bay, WI 54304
920.884.5000

STATE OF WISCONSIN BROKER DISCLOSURE



Wisconsin law requires all real estate licensees to give the following information about brokerage services to prospective customers.

Prior to negotiating on your behalf the Brokerage firm, or an agent associated with the firm, must provide you the following disclosure statement.

Disclosure to Customers

You are a customer of NAI Pfefferle (hereinafter Firm). The Firm is either an agent of another party in the transaction or a subagent of another firm that is the agent of another party in the transaction. A broker or a salesperson acting on behalf of the Firm may provide brokerage services to you. Whenever the Firm is providing brokerage services to you, the Firm and its brokers and salespersons (hereinafter Agents) owe you, the customer, the following duties:

- The duty to provide brokerage services to you fairly and honestly.
- The duty to exercise reasonable skill and care in providing brokerage services to you.
- The duty to provide you with accurate information about market conditions within a reasonable time if you request it, unless disclosure of the information is prohibited by law.
- The duty to disclose to you in writing certain Material Adverse Facts about a Property, unless disclosure of the information is prohibited by law.
- The duty to protect your confidentiality. Unless the law requires it, the Firm and its Agents will not disclose your confidential information or the confidential information of other parties.
- The duty to safeguard trust funds and other property held by the Firm or its Agents.
- The duty, when negotiating, to present contract proposals in an objective and unbiased manner and disclose the advantages and disadvantages of the proposals.

Please review this information carefully. An Agent of the Firm can answer your questions about brokerage services, but if you need legal advice, tax advice, or a professional home inspection, contact an attorney, tax advisor, or home inspector. This disclosure is required by section 452.135 of the Wisconsin statutes and is for information only. It is a plain-language summary of the duties owed to a customer under section 452.133(1) of the Wisconsin statutes.

Confidentiality Notice to Customers

The Firm and its Agents will keep confidential any information given to the Firm or its Agents in confidence, or any information obtained by the Firm or its Agents that a reasonable person would want to be kept confidential, unless the information must be disclosed by law or you authorize the Firm to disclose particular information. The Firm and its Agents shall continue to keep the information confidential after the Firm is no longer providing brokerage services to you.

No representation is made as to the legal validity of any provision or the adequacy of any provision in any specific transaction.

The following information is required to be disclosed by law:

1. Material Adverse Facts, as defined in section 452.01(5g) of the Wisconsin Statutes (see definition below).
2. Any facts known by the Firm or its Agents that contradict any information included in a written inspection report on the property or real estate that is the subject of the transaction.

To ensure that the Firm and its Agents are aware of what specific information you consider confidential, you may list that information below or provide that information to the Firm or its Agents by other means. At a later time, you may also provide the Firm or its Agents with other information you consider to be confidential.

CONFIDENTIAL INFORMATION

NON-CONFIDENTIAL INFORMATION

(the following information may be disclosed to the Firm and its Agents)

(Insert information you authorize to be disclosed, such as financial qualification information.)

Definition of Material Adverse Facts

A “Material Adverse Fact” is defined in Wis. Stat. 452.01(5g) as an Adverse Fact that a party indicates is of such significance, or that is generally recognized by a competent licensee as being of such significance to a reasonable party, that it affects or would affect the party’s decision to enter into a contract or agreement concerning a transaction or affects or would affect the party’s decision about the terms of such a contract or agreement.

An “Adverse Fact” is defined in Wis. Stat. 452.01(1e) as a condition or occurrence that a competent licensee generally recognizes will significantly and adversely affect the value of the property, significantly reduce the structural integrity of improvements to real estate, or present a significant health risk to occupants of the property; or information that indicates that a party to a transaction is not able to or does not intend to meet his or her obligations under a contract or agreement made concerning the transaction.

Notice About Sex Offender Registry

You may obtain information about the sex offender registry and persons registered with the registry by contacting the Wisconsin Department of Corrections on the Internet at <http://www.doc.wi.gov> or by telephone at 608-240-5830.