

FOR LEASE

177 Military E
Benicia, CA 94510



 **LOCKEHOUSE**

JON WOODCOX | (925) 627-7903
jon@lockehouse.com | Lic. #01923630

PROPERTY SUMMARY



ADDRESS 177 Military E, Benicia, CA 94510

AVAILABLE
 First Floor: 2,298 SF
 Lower Level: 3,108 SF
TOTAL: 5,406 SF

RATES Contact Listing Broker

TRAFFIC COUNTS
 14,707 ADT on Military E
 13,037 ADT on E 2nd Street
 61,967 on Interstate 780

177 Military East is centrally located in the heart of Downtown Benicia offering many amenities such as Safeway, Rite Aid, Starbucks and much more. This property is also very well positioned with quick access to I-780. Downtown Benicia demonstrates a powerful draw within this high-income, professional residential community as well as throughout the southern portions of Solano County.



POPULATION DENSITY

1 MILE	3 MILES	5 MILES
11,997	33,623	93,282



DAYTIME EMPLOYEES

1 MILE	3 MILES	5 MILES
3,878	17,071	37,651



AVERAGE HOUSEHOLD INCOME

1 MILE	3 MILES	5 MILES
\$128,902	\$133,461	\$117,378



BACHELOR'S DEGREE OR HIGHER

1 MILE	3 MILES	5 MILES
3,373	10,496	23,913



HOUSEHOLD RETAIL EXPENDITURE

1 MILE	3 MILES	5 MILES
\$3,302	\$3,389	\$3,098



HOUSEHOLD DENSITY

1 MILE	3 MILES	5 MILES
1,645	466	449

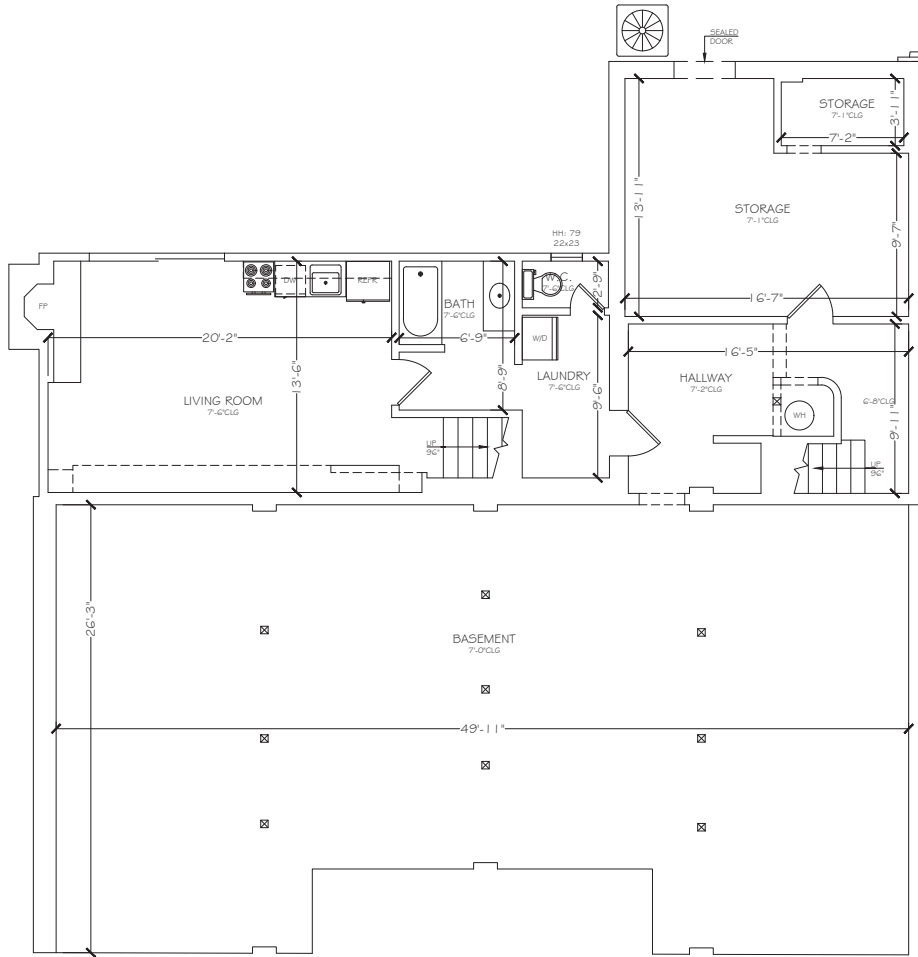


HOUSEHOLDS WITH CHILDREN

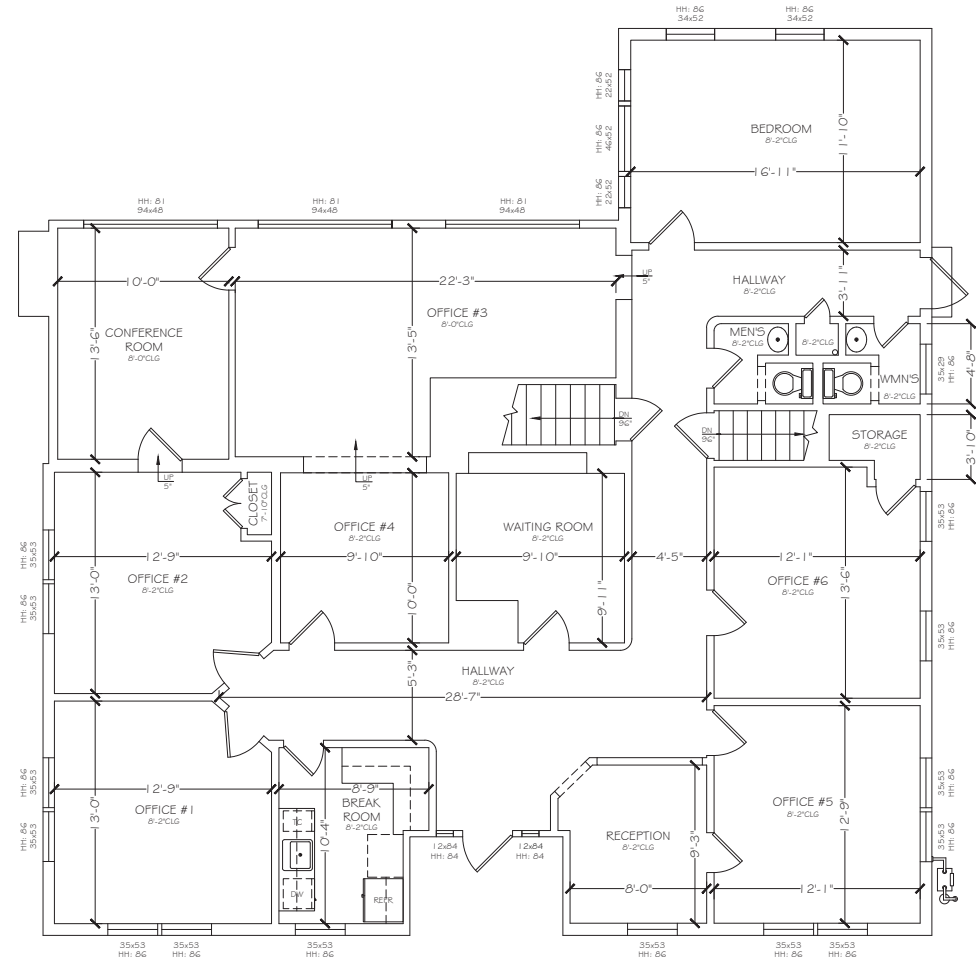
1 MILE	3 MILES	5 MILES
1,427	3,943	10,800



JON WOODCOX | (925) 627-7903
 jon@lockehouse.com | Lic. #01923630



BASEMENT



ENTRY LEVEL



Solano Square Shopping Center

SAFeway	RITE AID	Chevron
Bank of America	Starbucks	ups
WESTAMERICA BANK	FANTASTIC SAM'S CUT & COLOR	H&R BLOCK

SUBWAY	
Esca's APPELTO ITALIAN PIZZERIA	
BR baskin tobbin	
UMPQUA BANK	NATIONS GIANT



Veterans' Memorial Hall



FARMERS INSURANCE
BANK OF THE WEST

Got Plate Lunch
Hawaiian Style Food