

Auburn Park 277

4810 D Street NW
Suite 101
Auburn, WA

30,996 SF total

1,496 SF of office
(spec. office in for permit).

Spec office to be completed late
November 2015

Energy efficient T-5 lights with
motion sensors

30' clear height

ESFR sprinkler system

7 dock-high doors

1 grade-level (oversized) doors

Immediate access to SR-167
and quick I-5 access

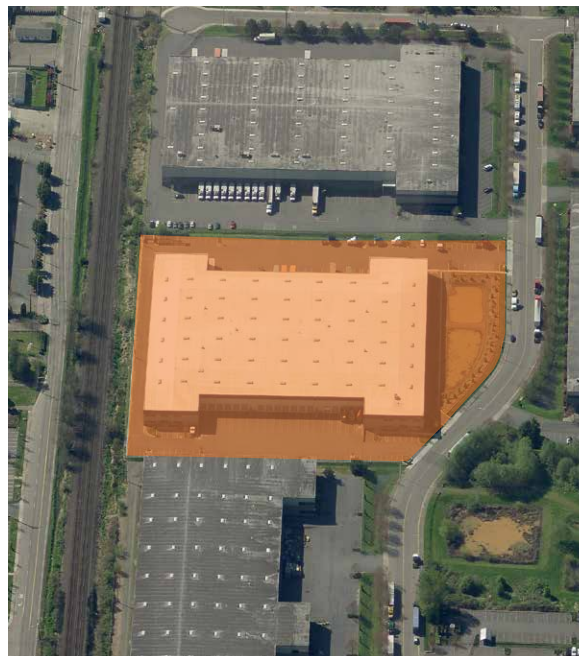
\$0.46 PSF shell

\$0.90 PSF office add-on, NNN

Available now



Location



Contact

Doug Klein, SIOR

206.248.7348

dklein@kiddermathews.com

Thad Mallory, SIOR

206.248.7338

tmallory@kiddermathews.com

Travis Stanaway

206.248.6526

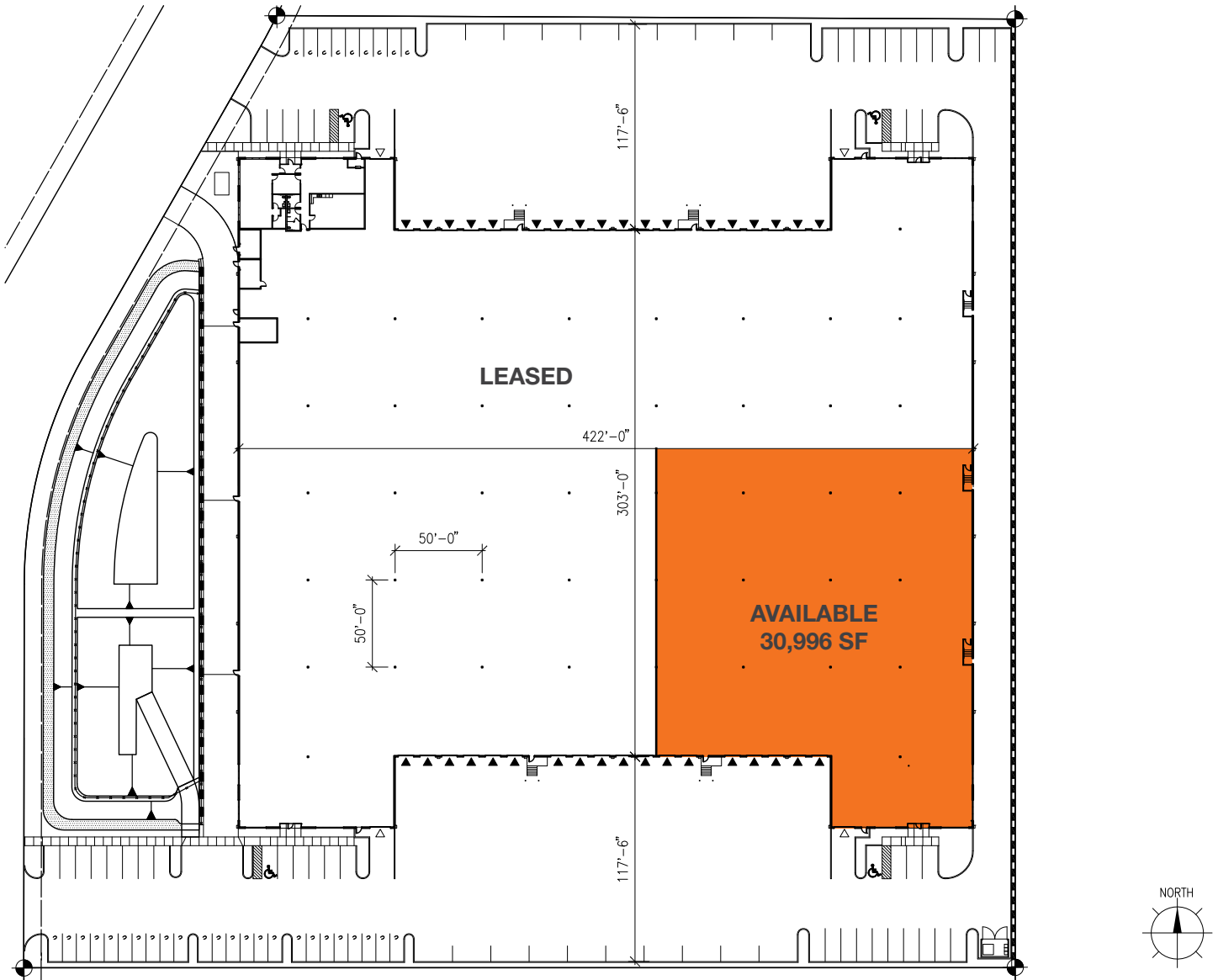
traviss@kiddermathews.com

Owned by



**REAL ESTATE
INVESTORS**

Auburn Park 277 Site Plan



AUBURN PARK 277
AUBURN, WA 98001
08/27/14

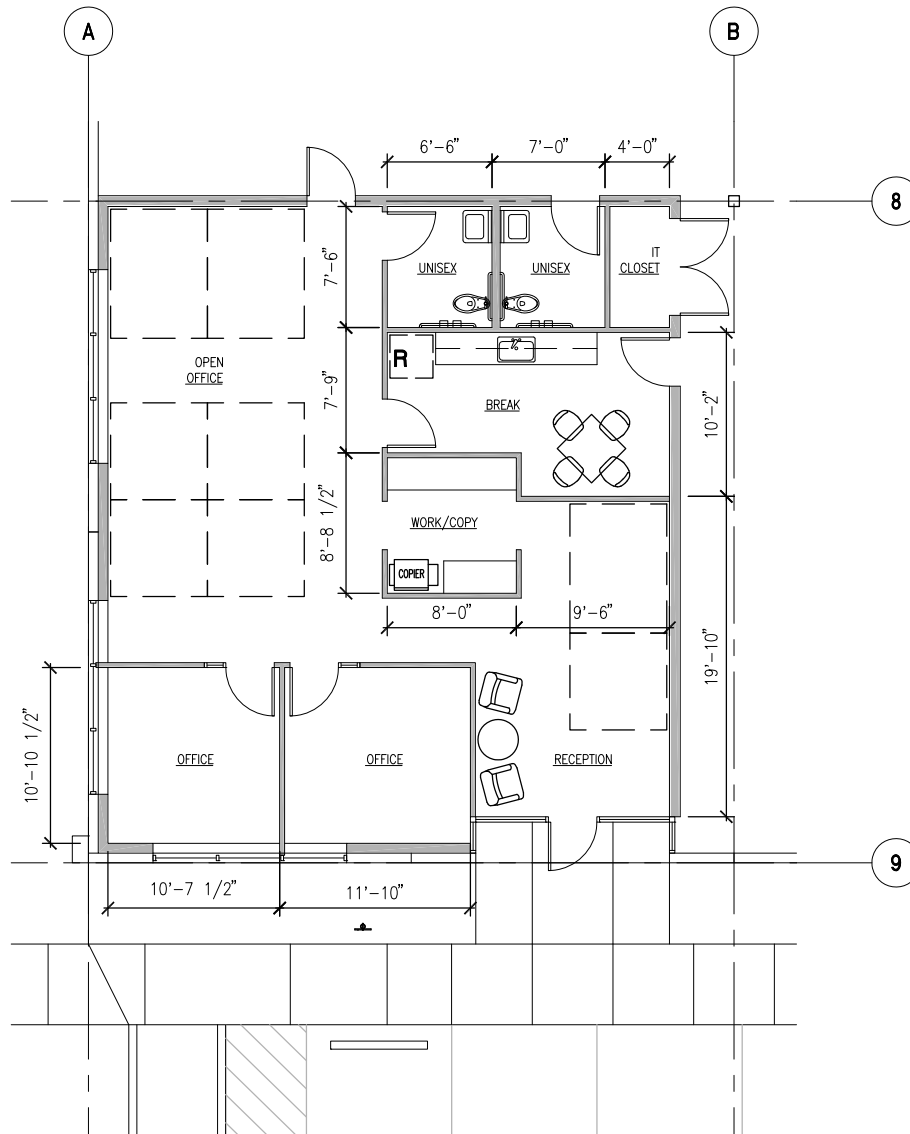
Contact

Doug Klein, SIOR
206.248.7348
dklein@kiddermathews.com

Thad Mallory, SIOR
206.248.7338
tmallory@kiddermathews.com

Travis Stanaway
206.248.6526
traviss@kiddermathews.com

Potential Spec Office Floor Plan



1,459 SQ. FT. OFFICE



FLOOR PLAN
1/16" = 1'-0"

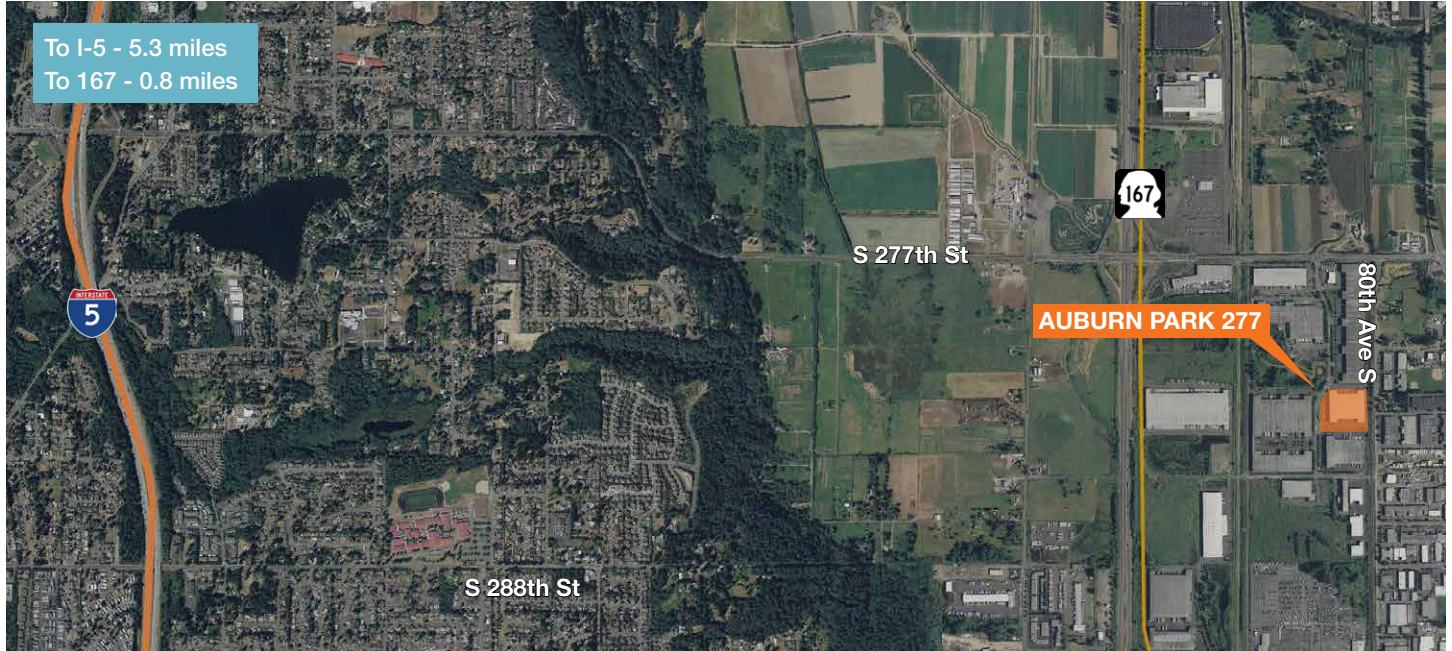
Contact

Doug Klein, SIOR
206.248.7348
dklein@kiddermathews.com

Thad Mallory, SIOR
206.248.7338
tmallory@kiddermathews.com

Travis Stanaway
206.248.6526
traviss@kiddermathews.com

Auburn Park 277



Building Specifications

6.8 acre site	ESFR sprinkler	Heat: freeze protection, 4 rooftop exhaust fans (entire building)
M-1 Zoning	30' clear height after the first bay	Power: 277/480 3 phase, 4 wire (entire building)
Total building size: 141,970 SF	6" nominal thickness; 4,000 psi, #4 rebar, 48" on center	Roof: hybrid wood roof structure, R-9 rigid insulation and a TPO cover
Build to suit office	117' truck maneuvering	
Energy efficient T-5 lighting with motion sensors	Ample parking	
Column spacing: 50'x50' typical	2008 construction	

Contact

Doug Klein, SIOR
206.248.7348
dklein@kiddermathews.com

Thad Mallory, SIOR
206.248.7338
tmallory@kiddermathews.com

Travis Stanaway
206.248.6526
traviss@kiddermathews.com