

# Callander Commercial<sup>®</sup>

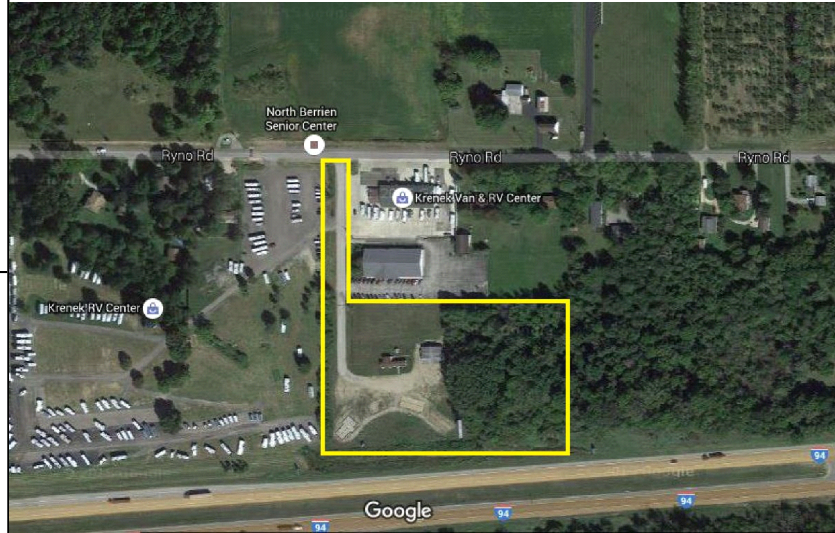
Commercial Land with I-94 frontage  
6650 Ryno Road | Coloma

## Commercial Land with I-94 frontage Ready for Development!

Land  
For Sale  
6650 Ryno Road  
Coloma, Michigan

### Overview:

Large parcel with easy access and fantastic visibility from the highway. Ready for development, with gas, electric and sewer already in place. Public water available in street.



### Information:

County:	Berrien
Municipality:	Coloma Charter Township
Total Acres:	6.53 Acres
Lot Dimensions:	Irregular
Recommended Use:	Vacant Land
Zoning Code / Description:	201 / Commercial
Between Streets:	I-94 and Ryno Road
Street Type:	Private
Sewer / Water:	Public / Well
Utilities Attached:	Gas and Electric
Utilities Available:	All Public Utilities
Parcel #:	110800280010105; 110800280011110; 110800280010113
RE Taxes / Year:	\$2,192.25 / 2015

### Contact Information:

<b>Matthew Callander</b> (CCIM)	<b>Maureen Daniel</b>
(269) 384-8368 [direct]	(269) 384-8362 [direct]
(269) 271-5187 [mobile]	(269) 330-9396 [mobile]
mcallander@ccmichigan.com	mdaniel@ccmichigan.com

### Sale Price:

**\$299,990**  
Listed below appraised value! PRICE REDUCED !!