

1725

WESTLAKE

SEATTLE, WASHINGTON



NEWMARK

CAVAN O'KEEFE
206.395.2903
cavan.okeefe@nmrk.com

JESSE OTTELE
206.452.4529
jesse.ottele@nmrk.com

1725 WESTLAKE

SEATTLE, WASHINGTON



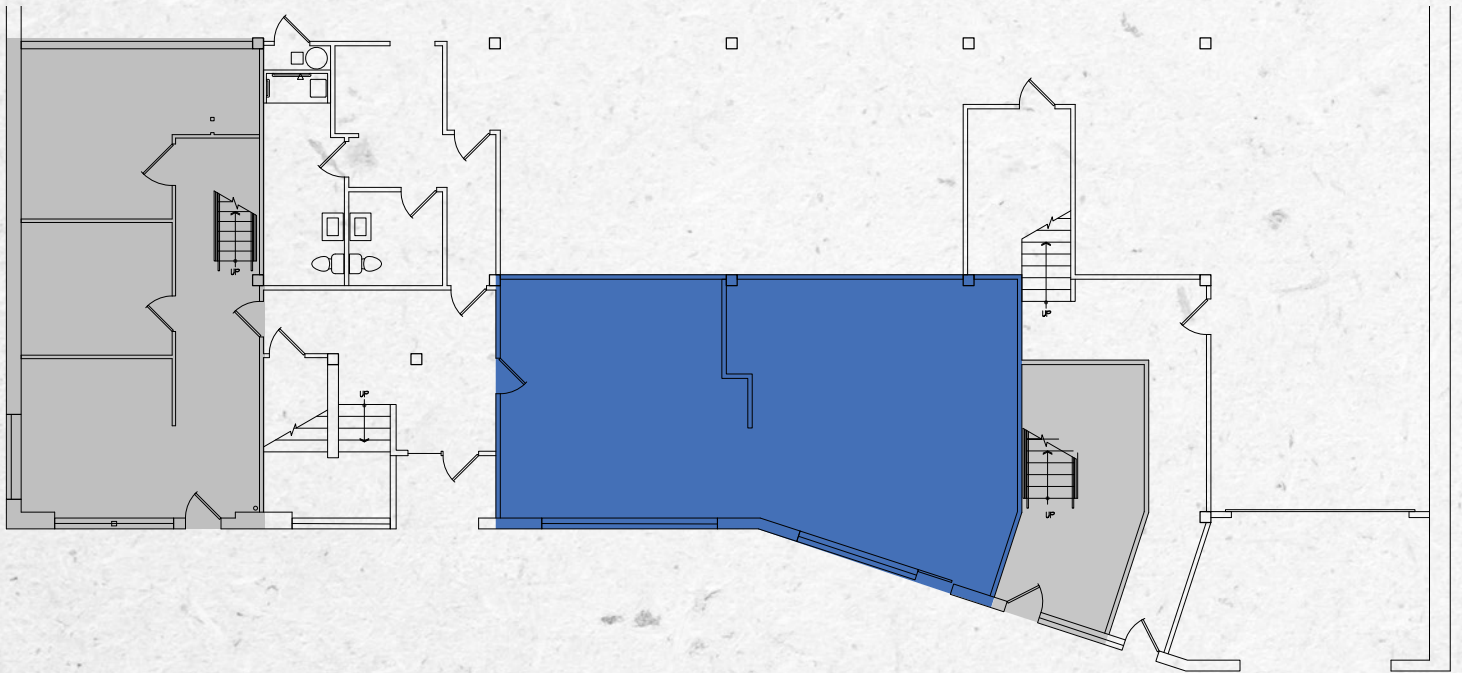
PROPERTY HIGHLIGHTS

ADDRESS	1725 Westlake Ave N, Seattle, WA 98109
BUILDING OVERVIEW	Class B Office with impressive Lake Union views
BUILDING AMENITIES	24 hour access, common kitchen, building signage available
LOCATION	Close proximity to South Lake Union, Queen Anne, Fremont and the Seattle CBD; walkable and bikeable neighborhood along Lake Union Trail bike/running path.
TRANSPORTATION	Major regional transportation connections via I-5 and Hwy 99. Public transit options include Metro bus lines 40, 62, 26, 28, 5, 16, 82 and the Rapid Ride E line, as well as the South Lake Union Streetcar

1725 WESTLAKE

SEATTLE, WASHINGTON

FLOOR 1
952 SF



Westlake Ave N




 Leased  Available Space

1725 WESTLAKE

SEATTLE, WASHINGTON

TRANSPORTATION & AMENITIES

1. Lyon's Grocery
2. Westlake Deli and Grocery
3. China Harbor Restaurant
4. Swedish Cultural Center
5. Dexter & Hayes Public House
6. Subway
7. Pasta Freska Italian Restaurant
8. Lake View Deli
9. Urban Crossfit
10. Winemakers Studio
11. West Marine
12. WRENCH Bike Shop
13. Starbucks
14. Taco Del Mar
15. Soopity
16. Starbucks
17. McCormick & Schmicks
18. Metropolitan Deli + Café
19. Herkimer Coffee
20. Pho Cyclo Café
21. Courtyard Marriott
22. Buca Di Beppo
23. World Sports Grille
24. Cask and Trotter
25. Trago Lake Union
26. Flatstick Pub
27. Tapster
28. Museum of History and Industry
29. The Center for Wooden Boats
30. Daniel's Broiler
31. Duke's Chowder House
32. Chandler's Crab House

-  Multi-Use Trail
-  Dedicated Bike Lane
-  South Lake Union Streetcar



1725 WESTLAKE

SEATTLE, WASHINGTON



CAVAN O'KEEFE
206.395.2903
cavan.okeefe@nrmk.com

JESSE OTTELE
206.452.4529
jesse.ottele@nrmk.com

NEWMARK

The distributor of this communication is performing acts for which a real estate license is required. The information contained herein has been obtained from sources deemed reliable but has not been verified and no guarantee, warranty or representation, either express or implied, is made with respect to such information. Terms of sale or lease and availability are subject to change or withdrawal without notice. 18-1023