

14950 E. JEFFERSON AVE.
GROSSE POINTE PARK, MICHIGAN

OFFICE FOR SALE OR LEASE
250 - 7,720 Square Feet Available



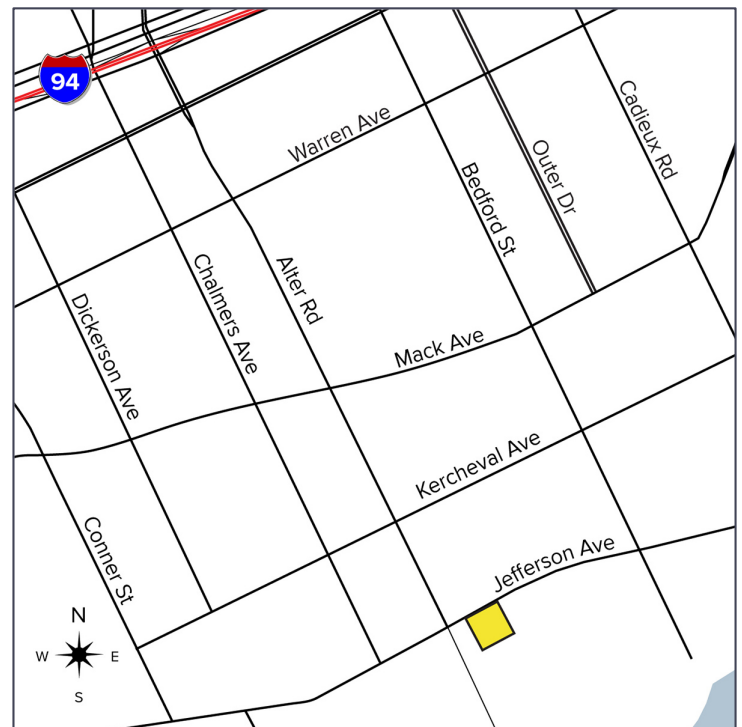
**SIGNATURE
ASSOCIATES**
KNOW SIGNATURE | KNOW RESULTS

OFFICE BUILDING



PROPERTY FEATURES

- 250 - 7,720 square feet available
- Across the street from the Schaap/Manoogian Center for Performing Arts (under construction)
- Zoned OS
- Two-story multi-tenant office building
- Elevator serving 1st and 2nd floors and full basement
- Basement storage
- Professional appearance
- 15 on-site parking spaces
- Sale Price: \$695,000



For more information, please contact:

CHRIS MONSOUR
(248) 948 0107
cmonsour@signatureassociates.com

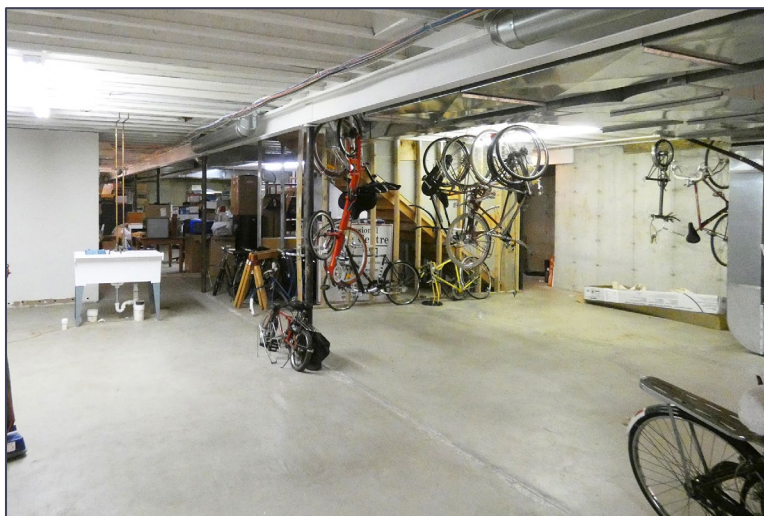
DAVE MILLER
(248) 948 4183
dmiller@signatureassociates.com

SIGNATURE ASSOCIATES
One Towne Square, Suite 1200
Southfield, MI 48076
www.signatureassociates.com

14950 E. Jefferson Ave. – Grosse Pointe Park, MI
Office For Sale or Lease

250 - 7,720
Square Feet
AVAILABLE

Interior Photos



For more information, please contact:

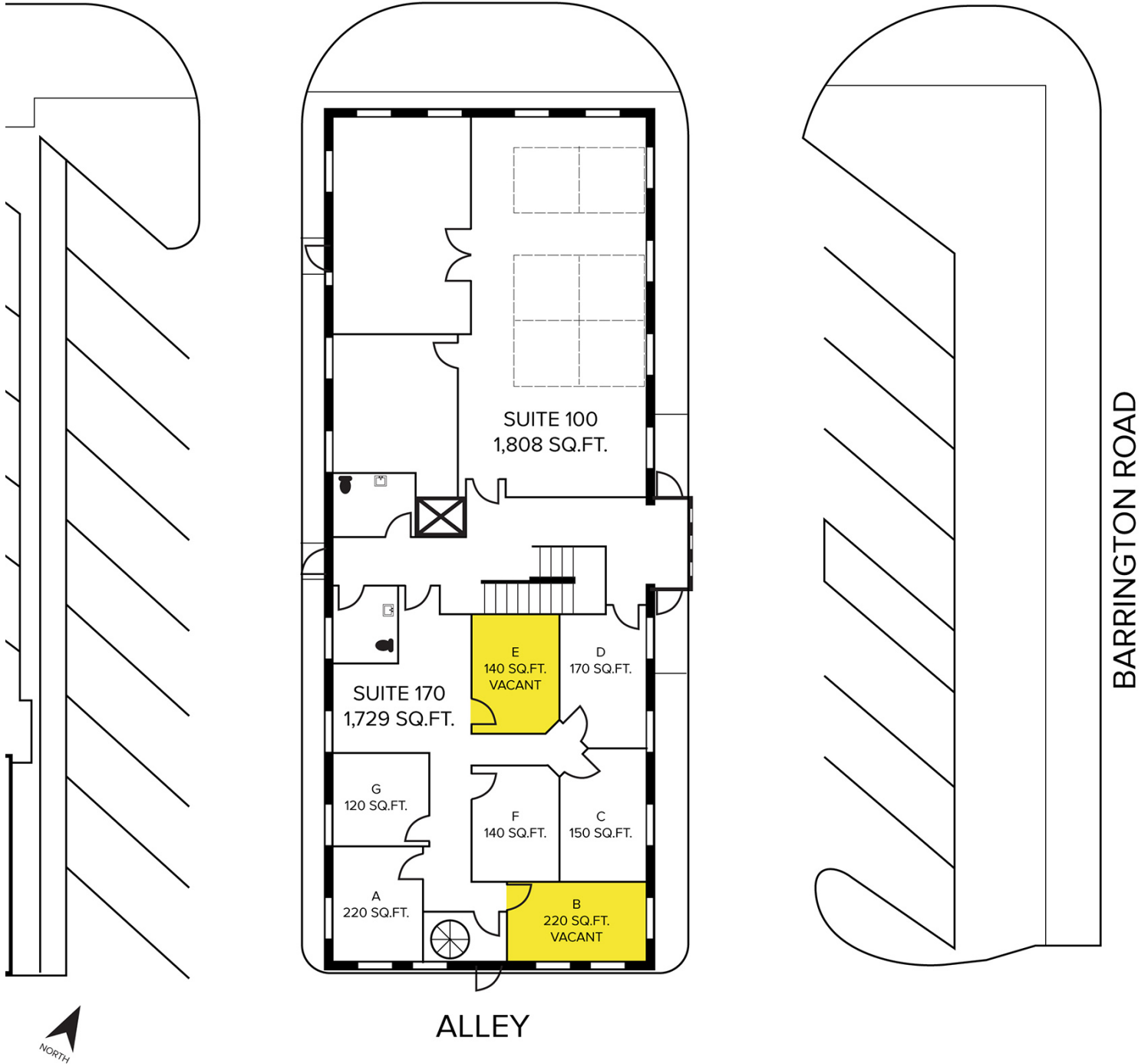
CHRIS MONSOUR
(248) 948 0107
cmonsour@signatureassociates.com

DAVE MILLER
(248) 948 4183
dmiller@signatureassociates.com

SIGNATURE ASSOCIATES
One Towne Square, Suite 1200
Southfield, MI 48076
www.signatureassociates.com

Site Plan

JEFFERSON AVENUE



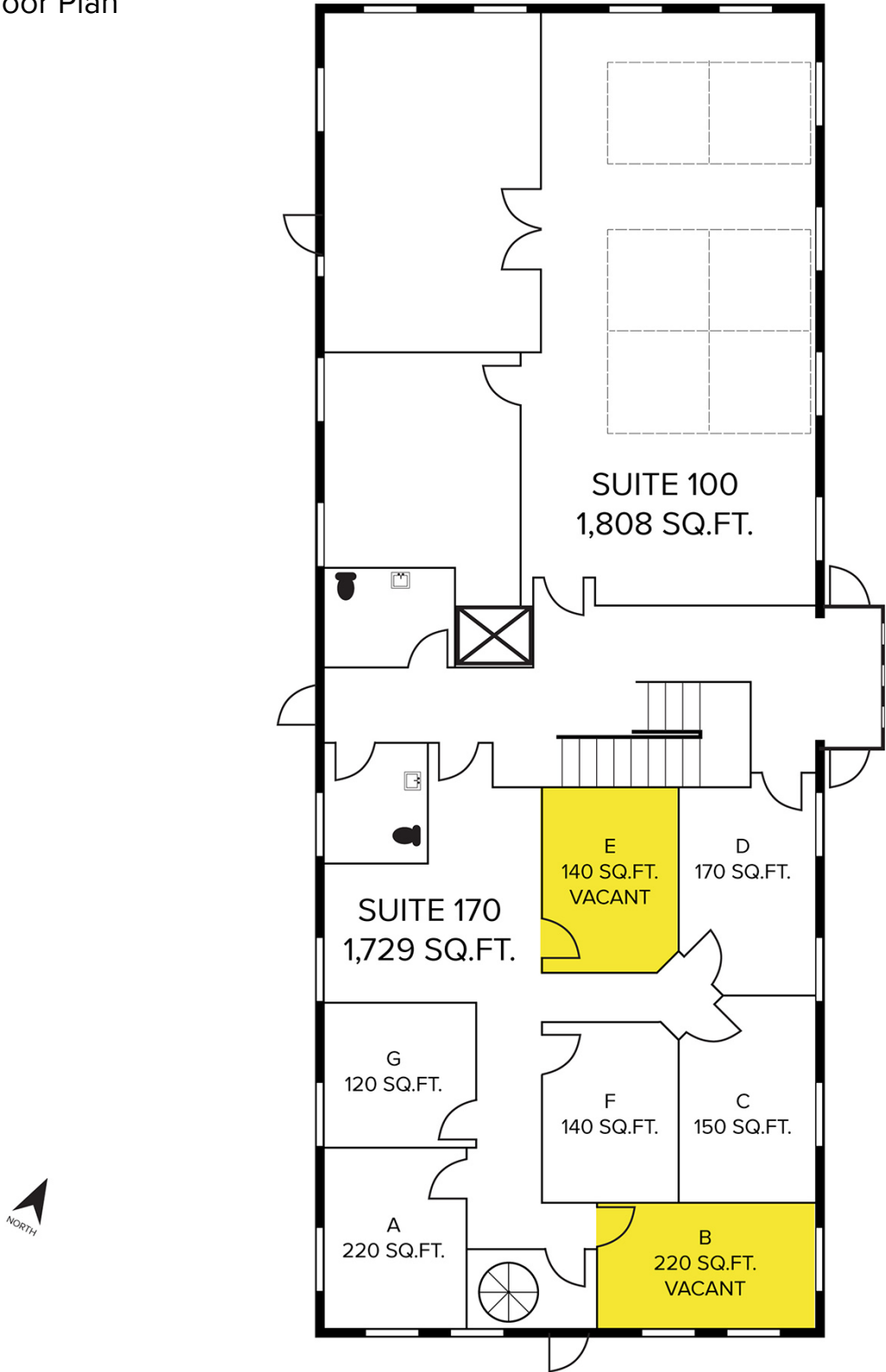
For more information, please contact:

CHRIS MONSOUR
(248) 948 0107
cmonsour@signatureassociates.com

DAVE MILLER
(248) 948 4183
dmiller@signatureassociates.com

SIGNATURE ASSOCIATES
One Towne Square, Suite 1200
Southfield, MI 48076
www.signatureassociates.com

First Floor Plan



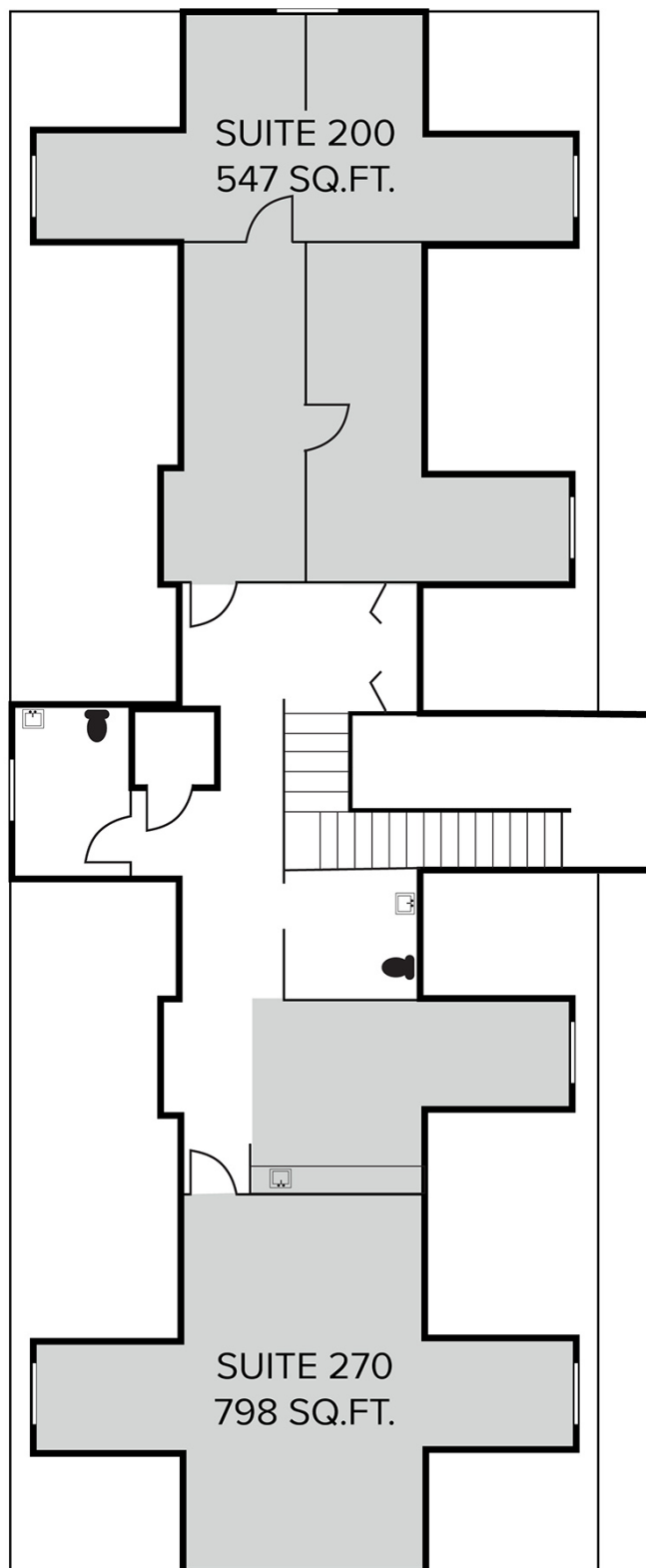
For more information, please contact:

CHRIS MONSOUR
(248) 948 0107
cmonsour@signatureassociates.com

DAVE MILLER
(248) 948 4183
dmiller@signatureassociates.com

SIGNATURE ASSOCIATES
One Towne Square, Suite 1200
Southfield, MI 48076
www.signatureassociates.com

Second Floor Plan



For more information, please contact:

CHRIS MONSOUR
(248) 948 0107
cmonsour@signatureassociates.com

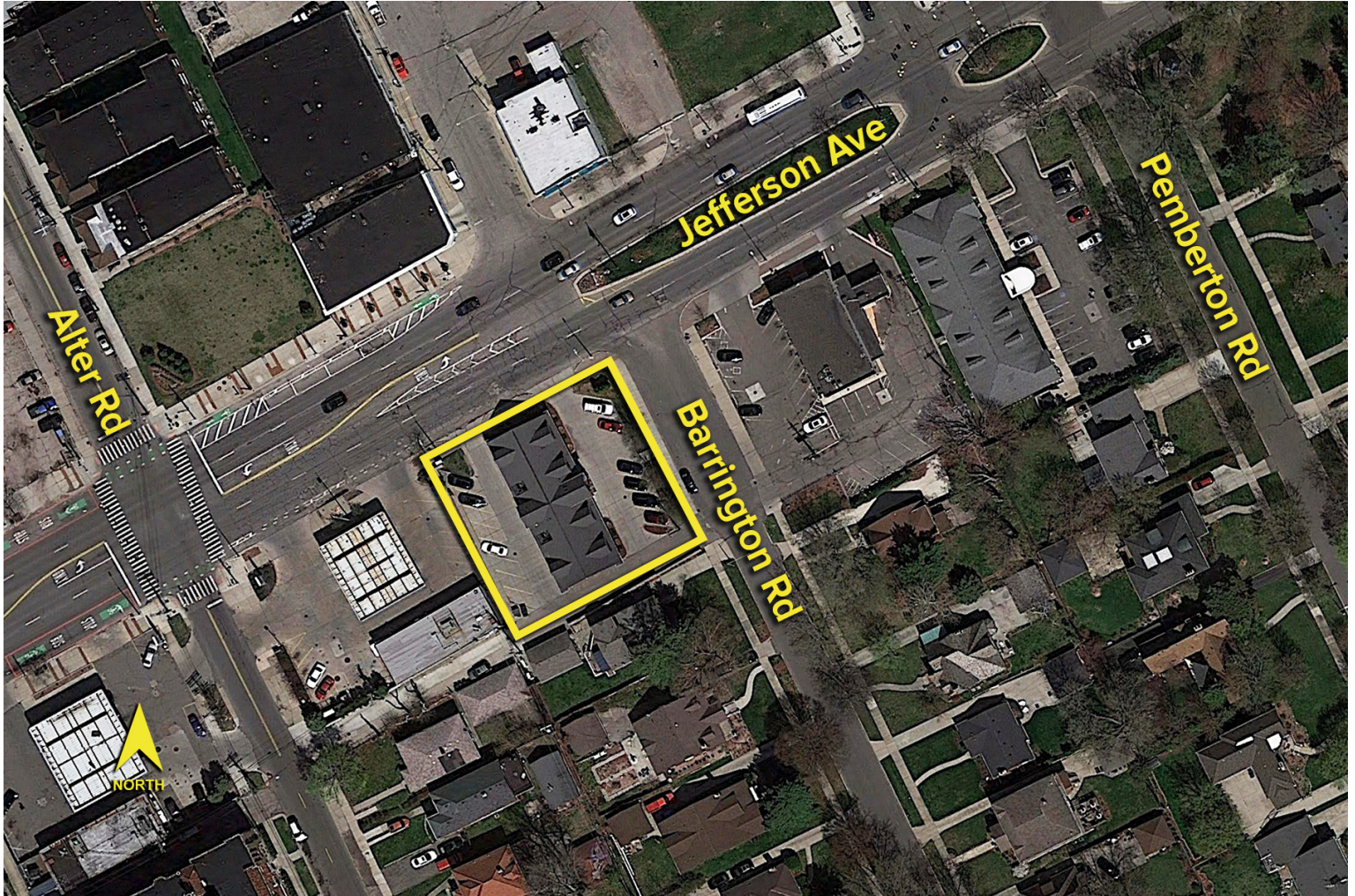
DAVE MILLER
(248) 948 4183
dmiller@signatureassociates.com

SIGNATURE ASSOCIATES
One Towne Square, Suite 1200
Southfield, MI 48076
www.signatureassociates.com

14950 E. Jefferson Ave. – Grosse Pointe Park, MI
Office For Sale or Lease

250 - 7,720
Square Feet
AVAILABLE

Aerial



For more information, please contact:

CHRIS MONSOUR
(248) 948 0107
cmonsour@signatureassociates.com

DAVE MILLER
(248) 948 4183
dmiller@signatureassociates.com

SIGNATURE ASSOCIATES
One Towne Square, Suite 1200
Southfield, MI 48076
www.signatureassociates.com