

For Sale

# Retail/Office Lots

143-187 Orchard Dr, Twin Falls, ID 83301

# NAISelect



## AVAILABLE PROPERTY

### Location

South on Blue Lakes Blvd,  
Southwest on Shoshone St  
N, South on Washington St  
S, East on Orchard Dr

### Lot Size

C-1

### Utilities

All on site

## SITE INFORMATION

- Developed Retail/Office lots
- Prime location with excellent exposure and access
- Under-served retail area
- Adjacent to Swenson's market
- Also Available: ±8.34 acre lot in Orchard Park Plaza Phase 2

## AVAILABLE LOTS

	Acres	Sale Price
Lot 1	±0.58	\$ 82,677
Lot 2	±0.68	\$ 95,560
Lot 3	±0.88	\$ 128,416
Lot 4	±0.56	\$ 72,346

## DEMOGRAPHICS

2017	1 mile	3 mile	5 mile
Total Households	2,239	12,712	20,496
Total Population	6,754	33,797	54,984
Average HH Income	\$48,372	\$47,684	\$55,805

## NAISelect

5531 N. Glenwood St.,  
Boise, ID 83714  
208-229-2020

**Steve Yates**

steve@naiselect.com  
C: 208-830-3173  
D: 208-229-6020

**Dennis Kelley**

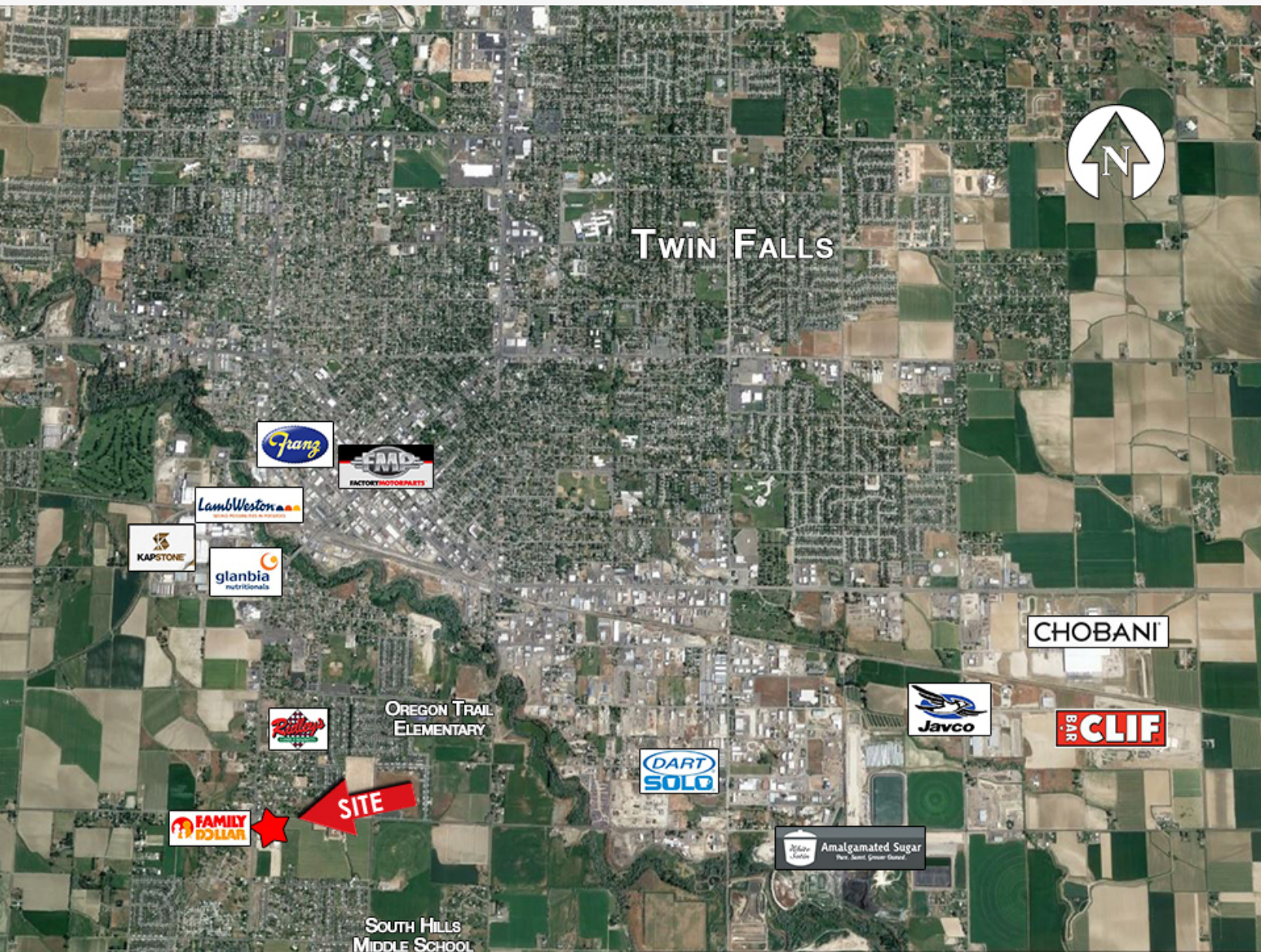
dennis@naiselect.com  
C: 208-890-7700  
D: 208-229-6021



For Sale

# Orchard Park Plaza - Retail/Office Lots

147-188 Orchard Dr., Twin Falls, ID 83301



**NAISelect**

5531 N. Glenwood St.,  
Boise, ID 83714  
208-229-2020

**Steve Yates**

steve@naiselect.com  
C: 208-830-3173  
D: 208-229-6020

**Dennis Kelley**

dennis@naiselect.com  
C: 208-890-7700  
D: 208-229-6021